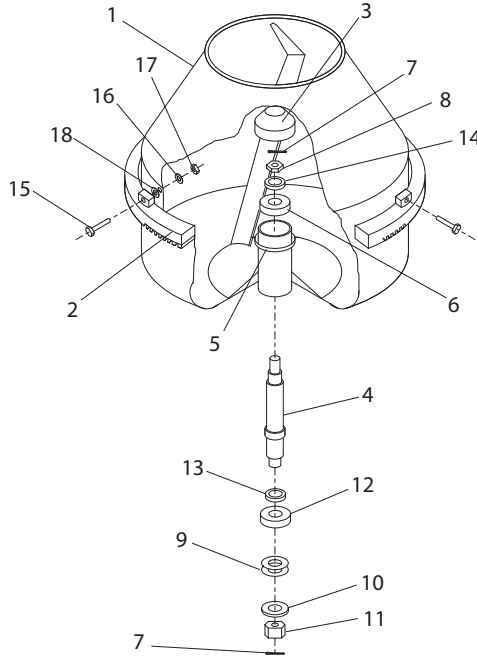

Frame Assembly , Cadre, Conjunto de Estructura, Conjunto de Estrutura

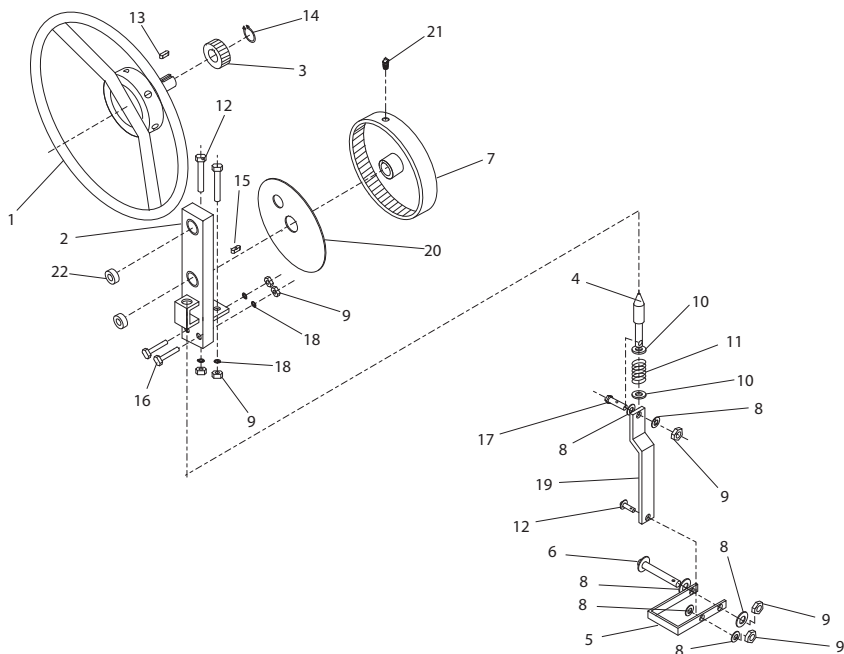
1-01

1	946/99593	Frame	Châssis	Estructura	Estrutura	150 / 150J / 200 / 200J	1
1	946/99594	Frame	Châssis	Estructura	Estrutura	150K / 150KJ / 200K / 200KJ	1
1	946/99545	Frame	Châssis	Estructura	Estrutura	250 / 250J	1
1	946/99546	Frame	Châssis	Estructura	Estrutura	250K / 250KJ	1
2	946/99595	Towbar	Barre de Remorquage	Barra de Remolque	Barra de reborque	150 / 200	1
2	946/99547	Towbar	Barre de Remorquage	Barra de Remolque	Barra de reborque	250	1
3	946/99596	Plug	Bougie	Tapón	Bujão	1
4	946/99597	Wheel	Roue	Rueda	Roda	150 / 200	1
4	946/99597	Wheel	Roue	Rueda	Roda	250	2
5	946/99550	Cover	Couvercle	Tapa	Tampa	1
6	946/99551	Washer	Rondelle	Arandela	Anilha	2
7	946/99552	Pin	Goupille	Pasador	Pino	Ø5 x 45	2
8	946/99626	Pin	Goupille	Pasador	Pino	Ø3	1
9	946/99617	Grease Nipple	Téton de graissage	Conexión para engrase	Bocal de Lubrificação	M10 x 1	1
10	9/5003	Screw	Vis	Tornillo	Parafuso	M5 x 10	2
11	946/99556	Washer	Rondelle	Arandela	Anilha	Ø5,1	2
12	8/5001	Nut	Ecrou	Tuerca	Porca	M5	2
13	946/99599	Yoke	Chape	Articulación	Culatra	150K / 150KJ / 200K / 200KJ	1
13	946/99629	Yoke	Chape	Articulación	Culatra	150 / 150J / 200 / 200J	1
13	946/99634	Yoke	Chape	Articulación	Culatra	250 / 250J	1
13	946/99635	Yoke	Chape	Articulación	Culatra	250K / 250KJ	1
14	946/99557	Guard	Carène	Defensa	Guarda	250	1
15	7/6033	Screw	Vis	Tornillo	Parafuso	250	2
16	8/6001	Nut	Ecrou	Tuerca	Porca	250	2



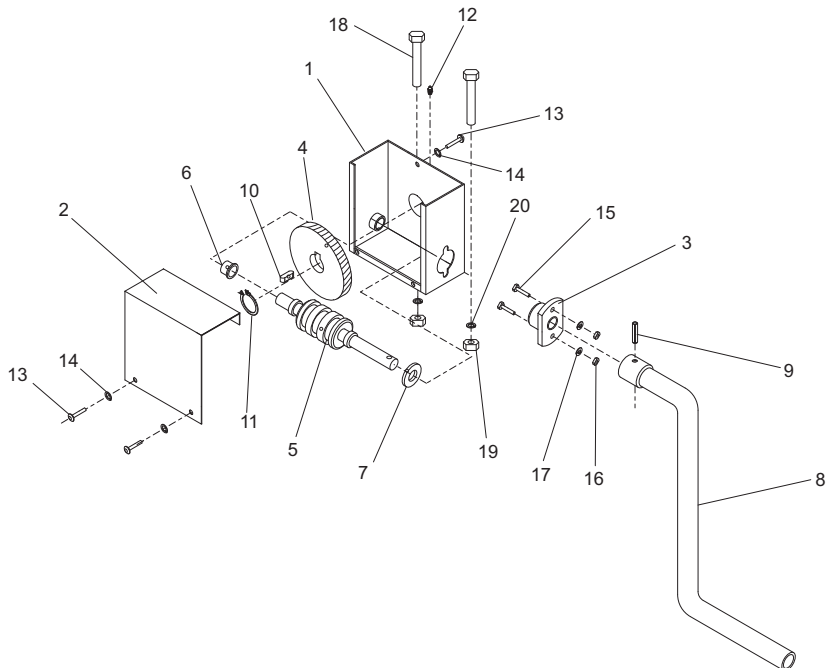
Drum Complete, Tambour en Entier , Cuba Completa, Tambor completo

1	946/99601	Drum	Tambour	Tambor	Tambor	150	1
1	946/99602	Drum	Tambour	Tambor	Tambor	200	1
1	946/99560	Drum	Tambour	Tambor	Tambor	250	1
2	946/99603	Gear	Engrenage	Engranaje	Engrenagen	150 / 200	1
2	963/99042	Gear	Engrenage	Engranaje	Engrenagen	250	1
3	946/99618	Cover	Couvercle	Tapa	Tampa	150 / 200	1
3	946/99563	Cover	Couvercle	Tapa	Tampa	250	1
4	946/99512	Shaft	Axe	Eje	Veio	150 / 200	1
4	946/99564	Shaft	Axe	Eje	Veio	250	1
5	944/99042	Ring	Anneau	Anillo	Anel	150 / 200	1
5	946/99565	Ring	Anneau	Anillo	Anel	250	1
6	946/99505	Bearing	Roulement	Cojinete	Rolamento	150 / 200	1
6	946/99521	Bearing	Roulement	Cojinete	Rolamento	250	1
7	946/99604	Pin	Goupille	Pasador	Pino	Ø4 x 45	2
8	944/99040	Nut	Ecrou	Tuerca	Porca		2
9	944/99038	Washer	Rondelle	Arandela	Anilha	150 / 200	AR
9	946/99567	Washer	Rondelle	Arandela	Anilha	250	AR
10	944/99050	Washer	Rondelle	Arandela	Anilha	150 / 200	1
10	946/99568	Washer	Rondelle	Arandela	Anilha	250	1
11	963/99039	Nut	Ecrou	Tuerca	Porca		1
12	944/99046	Ring	Anneau	Anillo	Anel	150 / 200	1
12	946/99570	Ring	Anneau	Anillo	Anel	250	1
13	944/99012	Bearing	Roulement	Cojinete	Rolamento	150 / 200	1
13	946/99522	Bearing	Roulement	Cojinete	Rolamento	250	1
14	946/99571	Washer	Rondelle	Arandela	Anilha	25 x 45 x 4	4
15	7/10003	Screw	Vis	Tornillo	Parafuso	150 / 200	4
15	7/10009	Screw	Vis	Tornillo	Parafuso	250	4
16	946/99619	Washer	Rondelle	Arandela	Anilha	10,2	4
17	8/10006	Nut	Ecrou	Tuerca	Porca	150 / 200	4
17	8/10003	Nut	Ecrou	Tuerca	Porca	250	4
18	4/1005	Washer	Rondelle	Arandela	Anilha	10,5	4



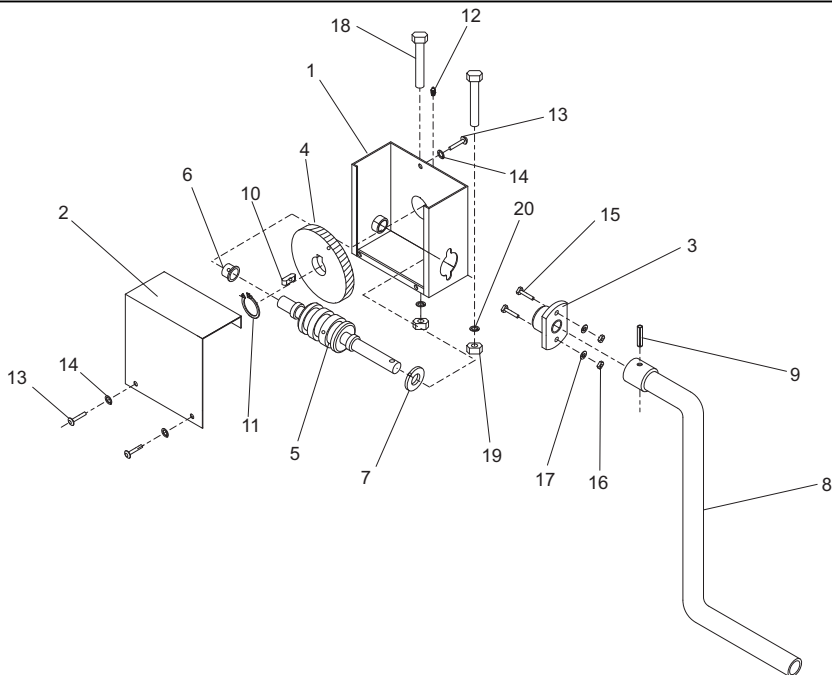
Handwheel Assembly, Ensemble volant de manoeuvre, Montaje de Volante, Montagem do volante (BWE-150 / 150J / 200 / 200J / 250 / 250J)

1	946/99572	Handwheel	Volant	Volante	Volante	1
2	946/99606	Bearing	Roulement	Cojinete	Rolamento	150 / 150J / 200 / 200J 1
2	946/99573	Bearing	Roulement	Cojinete	Rolamento	250 / 250J 1
3	946/99532	Pinion	Pignon	Piñón	Pinhão	150 / 200 1
3	944/99014	Pinion	Pignon	Piñón	Pinhão	250 1
4	946/99575	Pin	Goupille	Pasador	Pino 1
5	946/99607	Pedal	Pédale	Pedal	Pedal	150 / 200 1
5	909/99929	Pedal	Pédale	Pedal	Pedal	250 1
6	963/99026	Screw	Vis	Tornillo	Parafuso	150 / 150J / 200 / 200J 1
6	963/99029	Screw	Vis	Tornillo	Parafuso	250 / 250J 1
7	946/99577	Gear	Engrenage	Engranaje	Engrenagem 1
8	4/1005	Washer	Rondelle	Arandela	Anilha	10,5 5
9	8/10003	Nut	Ecrou	Tuerca	Porca	M10 7
10	946/99538	Washer	Rondelle	Arandela	Anilha	Ø17 1
11	944/99017	Spring	Ressort	Resorte	Mola	3,5/25/62/10 3
12	7/10010	Screw	Vis	Tornillo	Parafuso	M10 x 30 1
13	944/99018	Key	Clavette	Chaveta	Chave	6 x 6 x 16 1
14	946/99534	Ring	Anneau	Anillo	Anel	Z-22 1
15	944/99019	Key	Clavette	Chaveta	Chave	10 x 8 x 36 1
16	9/10008	Screw	Vis	Tornillo	Parafuso	M10 x 60 2
17	7/10009	Screw	Vis	Tornillo	Parafuso	M10 x 40 1
18	946/99619	Washer	Rondelle	Arandela	Anilha	10,2 4
19	946/99609	Bar	Barre	Barra	Barra	150 / 150J / 200 / 200J 1
19	946/99579	Bar	Barre	Barra	Barra	250 / 250J 1
20	946/99580	Cover	Couvercle	Tapa	Tampa	Z90 1
21	500/06100	Grease Nipple	Téton de graissage	Conexión para engrase	Bocal de Lubrificação	150 / 200 1
21	500/06100	Grease Nipple	Téton de graissage	Conexión para engrase	Bocal de Lubrificação	250 1
22	944/99060	Bearing	Roulement	Cojinete	Rolamento 4



**Crank Handle Assembly, Assemblée détraquée, Montaje maneta inestable, Conjunto aluïdo
(BWE-150K / 150KJ / 200K / 200KJ)**

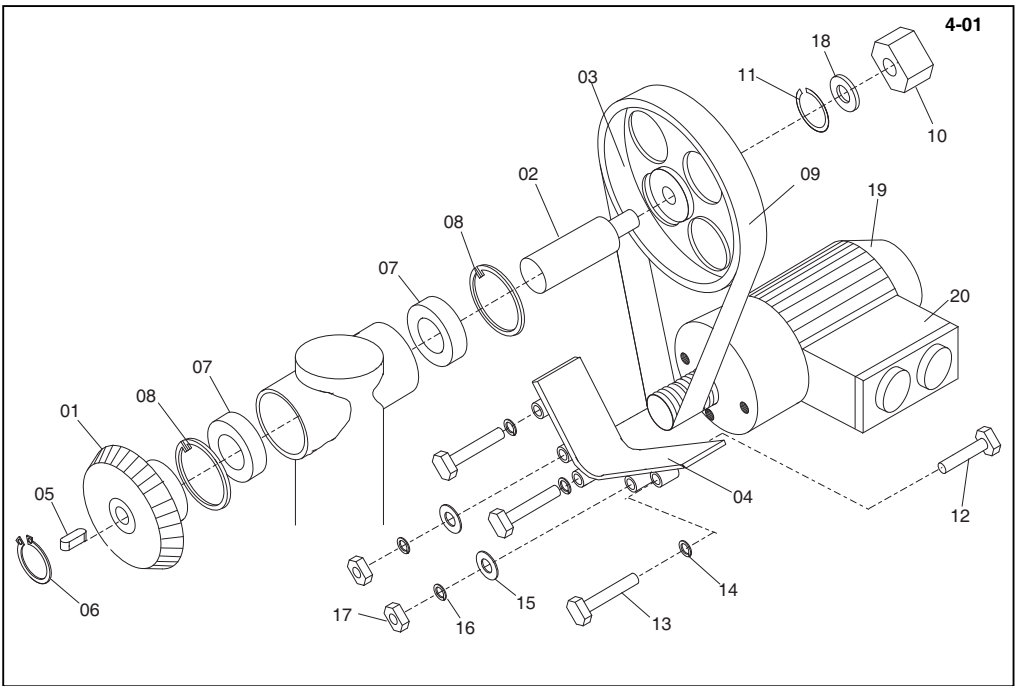
1	946/99610.....	Box	Boîte.....	Caja	Caixa	1
2	946/99611.....	Cover	Couvercle.....	Tapa	Tampa	1
3	946/99507.....	Bearing	Roulement	Cojinete	Rolamento	1
4	946/99612.....	Gear	Engrenage	Engranaje	Engragenen	1
5	946/99613.....	Shaft	Axe	Eje	Veio	1
6	946/99614.....	Bush	Douille.....	Buje	Bucha	1
7	946/99615.....	Bush	Douille.....	Buje	Bucha	1
8	946/99616.....	Handle	Guidon	Manillar	Punho	1
9	946/99620.....	Pin	Goupille.....	Pasador	Pino	8 x 80
10	946/99621.....	Key	Clavette.....	Chaveta	Chave	8 x 7 x 25
11	946/99622.....	Ring	Anneau	Anillo	Anel	2-30
12	946/99617.....	Grease Nipple.....	Téton de graissage	Conexión para engrase	Bocal de Lubrificação	M10 x 1
13	7/6011.....	Screw	Vis	Tomillo	Parafuso	M6 x 10
14	4/6005.....	Washer	Rondelle.....	Arandela	Anilha	6,2
15	7/8012.....	Screw	Vis	Tomillo	Parafuso	M8 x 25
16	8/8004.....	Nut	Ecrou	Tuerca	Porca	M6
17	4/8003.....	Washer	Rondelle.....	Arandela	Anilha	8,2
18	7/10010.....	Screw	Vis	Tomillo	Parafuso	M10 x 30
19	8/10003.....	Nut	Ecrou	Tuerca	Porca	M10
20	946/99619.....	Washer	Rondelle.....	Arandela	Anilha	10,2



**Crank Handle Assembly, Assemblée détraquée, Montaje maneta inestable, Conjunto aluïdo
(BWE-250K / 250KJ)**

3-03

1	946/99582	Box	Boite	Caja	Caixa	1
2	946/99583	Cover	Couvercle	Tapa	Tampa	1
3	946/99584	Gear	Engrenage	Engranaje	Engrenagen	1
4	946/99585	Gear	Engrenage	Engranaje	Engrenagen	1
5	946/99586	Handle	Guidon	Manillar	Punho	1
6	53/0001	Bearing	Roulement	Cojinete	Rolamento	2
7	946/99587	Key	Clavette	Chaveta	Chave	10 x 8 x 40
8	946/99588	Ring	Anneau	Anillo	Anel	Z-32
9	903/99520	Ring	Anneau	Anillo	Anel	W-52
10	946/99620	Pin	Goupille	Pasador	Pino	8 x 80
11	946/99617	Grease Nipple	Téton de graissage	Conexión para engrase	Bocal de Lubrificação	M10 x 1
12	7/6033	Screw	Vis	Tornillo	Parafuso	M6 x 16
13	4/6005	Washer	Rondelle	Arandela	Anilha	6,1
14	7/10010	Screw	Vis	Tornillo	Parafuso	M10 x 30
15	8/10003	Nut	Ecrou	Tuerca	Porca	M10
16	946/99619	Washer	Rondelle	Arandela	Anilha	M10,2 x 18, 2 x 2



4-01

Drive Kit , Kit d'entraînement, Kit transmisión, Kit de Transmissão

4-01

1	946/99532	Pinion	Pignon	Piñón	Pinhão	150 / 200	1
1	946/99525	Pinion	Pignon	Piñón	Pinhão	250	1
2	946/99513	Shaft	Axe	Eje	Veio	150 / 200	1
2	946/99540	Shaft	Axe	Eje	Veio	250	1
3	944/99054	Wheel	Roue	Rueda	Roda		1
4	946/99533	Bracket	Patte de montage	Escuadra	Suporte	150 / 200	1
4	946/99541	Bracket	Patte de montage	Escuadra	Suporte	250	1
5	944/99004	Key	Clavette	Chaveta	Chave	150 / 200	1
5	946/99542	Key	Clavette	Chaveta	Chave	250	1
6	944/99534	Ring	Anneau	Anillo	Anel	150 / 200	1
6	946/99543	Ring	Anneau	Anillo	Anel	250	1
7	53/0027	Bearing	Roulement	Cojinete	Rolamento	150 / 200	1
7	946/99524	Bearing	Roulement	Cojinete	Rolamento	250	1
8	903/99520	Ring	Anneau	Anillo	Anel	150 / 200	2
8	946/99544	Ring	Anneau	Anillo	Anel	250	2
9	21/0239	Belt	Courroie	Correa	Cinta	150 / 200	1
9	946/99520	Belt	Courroie	Correa	Cinta	250	1
10	8/16001	Nut	Ecrou	Porca	Porca	M16	1
11	944/99048	Washer	Rondelle	Arandela	Anilha	16,3	1
12	9/10005	Screw	Vis	Tornillo	Parafuso	M10 x 45	5
13	7/8047	Screw	Vis	Tornillo	Parafuso	M8 x 40	1
14	4/8003	Washer	Rondelle	Arandela	Anilha	8,2	1
15	946/99537	Washer	Rondelle	Arandela	Anilha	10,2	1
16	4/1005	Washer	Rondelle	Arandela	Anilha	Ø10,5	1
17	8/10003	Nut	Ecrou	Tuerca	Porca	M10	4
18	946/99538	Washer	Rondelle	Arandela	Anilha	Ø17	1
19	946/99631	Motor - 230v	Moteur - 230v	Motor - 230v	Motor - 230v	150 / 200	1
19	946/99632	Motor - 400v	Moteur - 400v	Motor - 400v	Motor - 400v	150 / 200	1
19	946/99516	Motor - 230v	Moteur - 230v	Motor - 230v	Motor - 230v	250	1
19	946/99517	Motor - 400v	Moteur - 400v	Motor - 400v	Motor - 400v	250	1
20	946/99518	Switch	Bouton	Interruptor	Interruptor	1 Phase	1
20	946/99519	Switch	Bouton	Interruptor	Interruptor	3 Phase	1