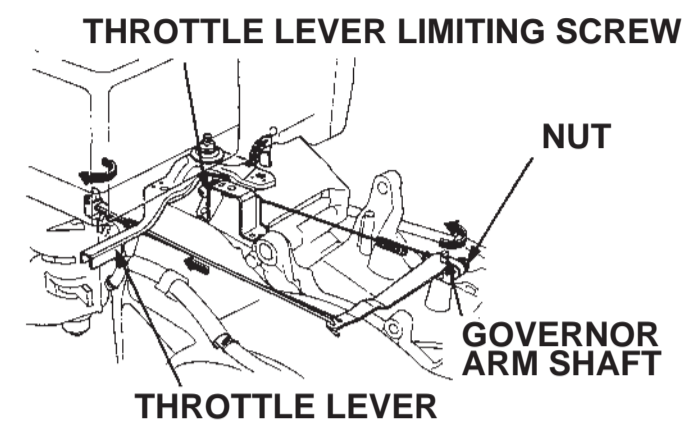


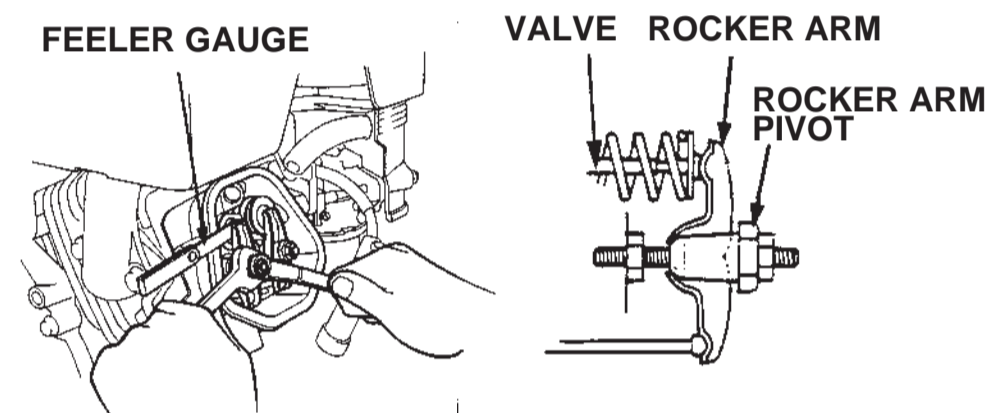
## GOVERNOR



Rotate the governor arm shaft as far as it will go in the same direction the governor arm moved to open the throttle.  
Tighten the nut on the governor arm.

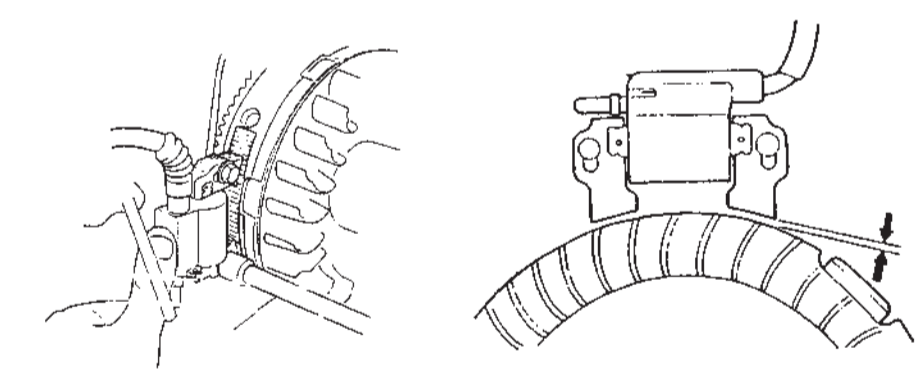
Maximum speed	3.850±150min <sup>-1</sup> (rpm)
---------------	----------------------------------

## VALVE CLEARANCE

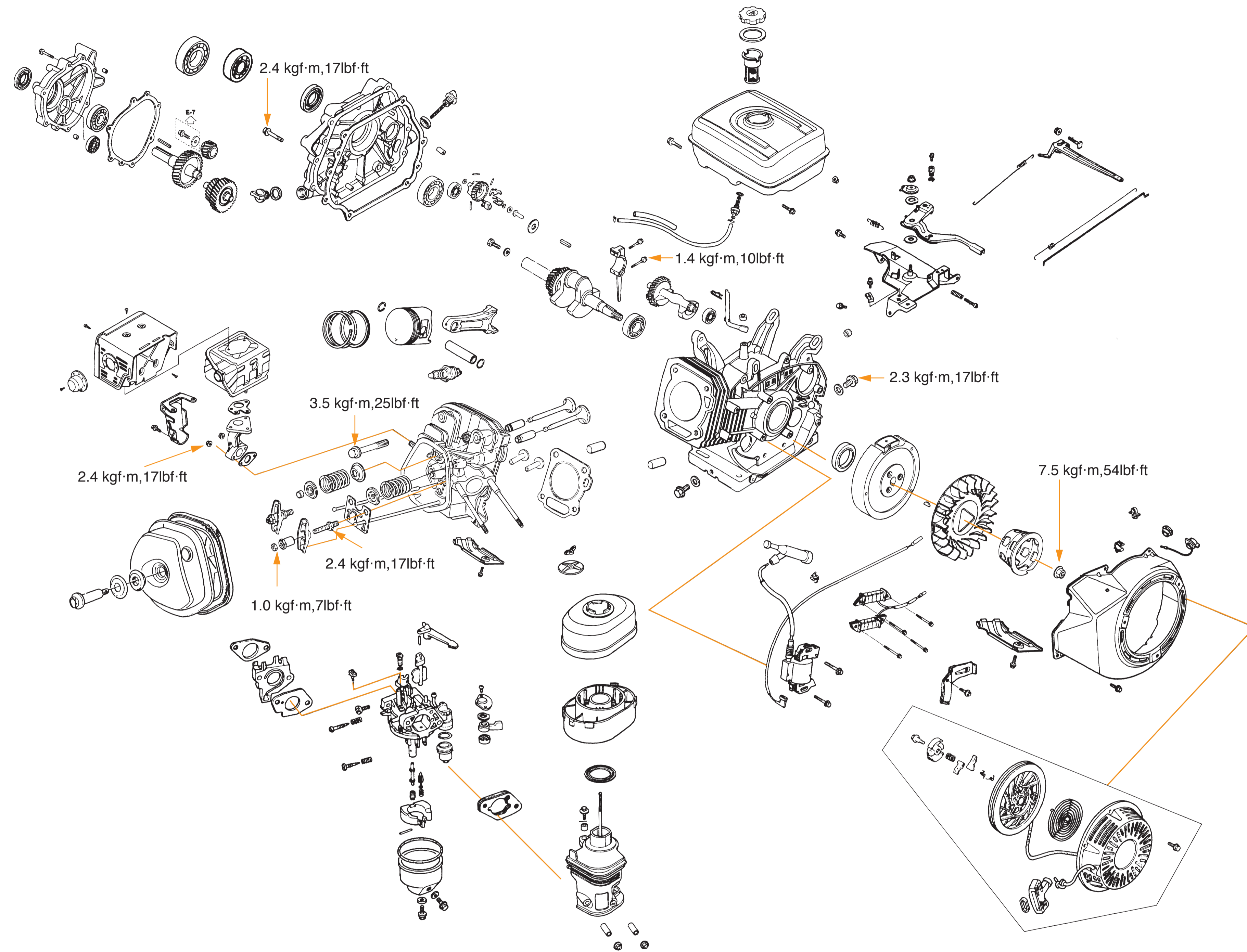


Standard valve clearance	IN	0.15±0.02mm (0.006±0.001 in)
	EX	0.20±0.02mm (0.008±0.001 in)

## IGNITION COIL AIR GAP

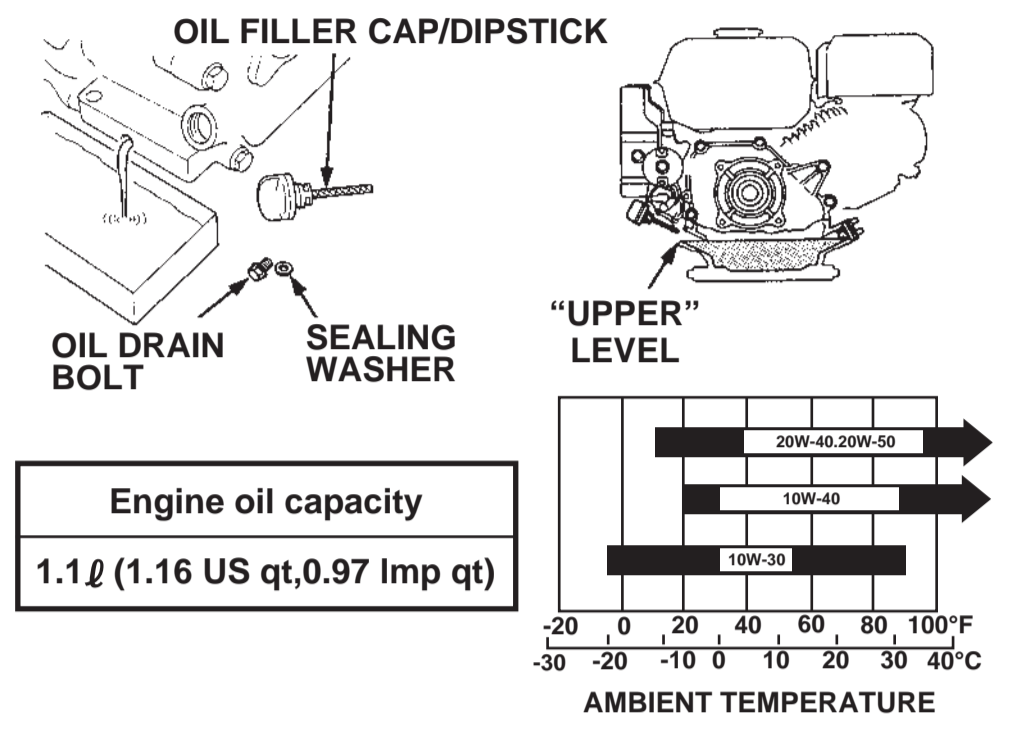


Specified clearance	0.4±0.2mm(0.016±0.008 in)
---------------------	---------------------------



© Honda Motor Co., Ltd. Power Product Service Division.

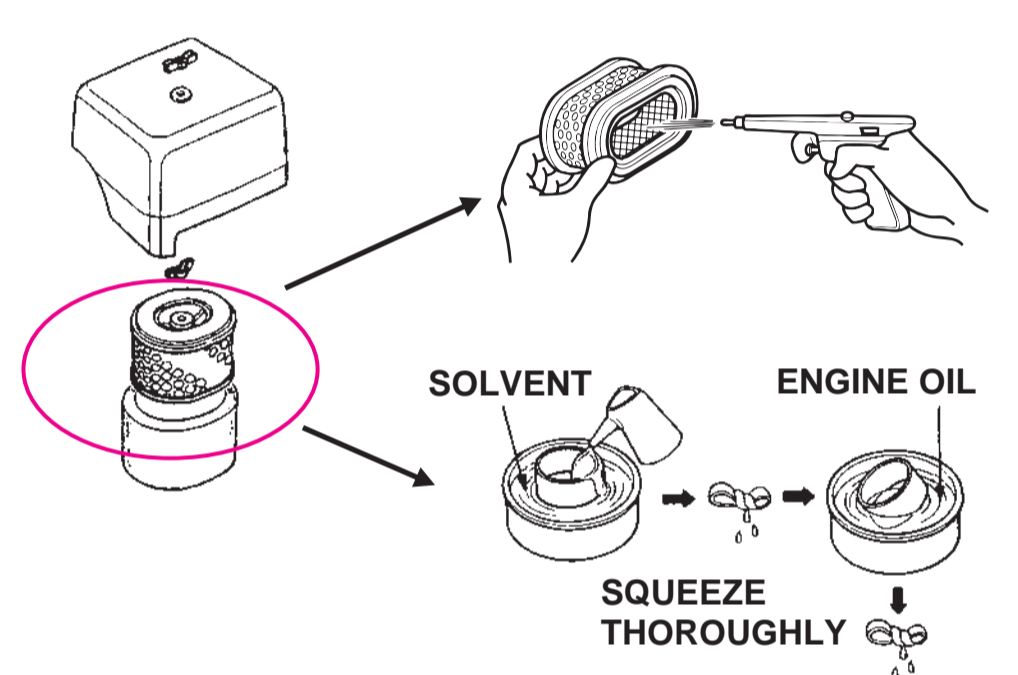
## ENGINE OIL



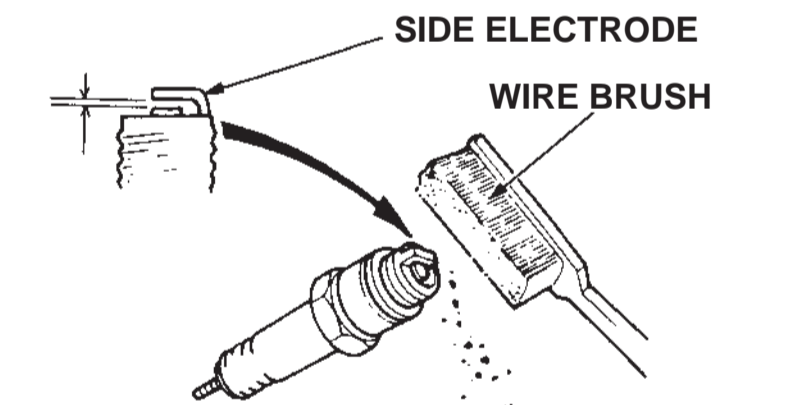
Engine oil capacity	1.1ℓ (1.16 US qt, 0.97 Imp qt)
---------------------	--------------------------------

AMBIENT TEMPERATURE

## AIR CLEANER

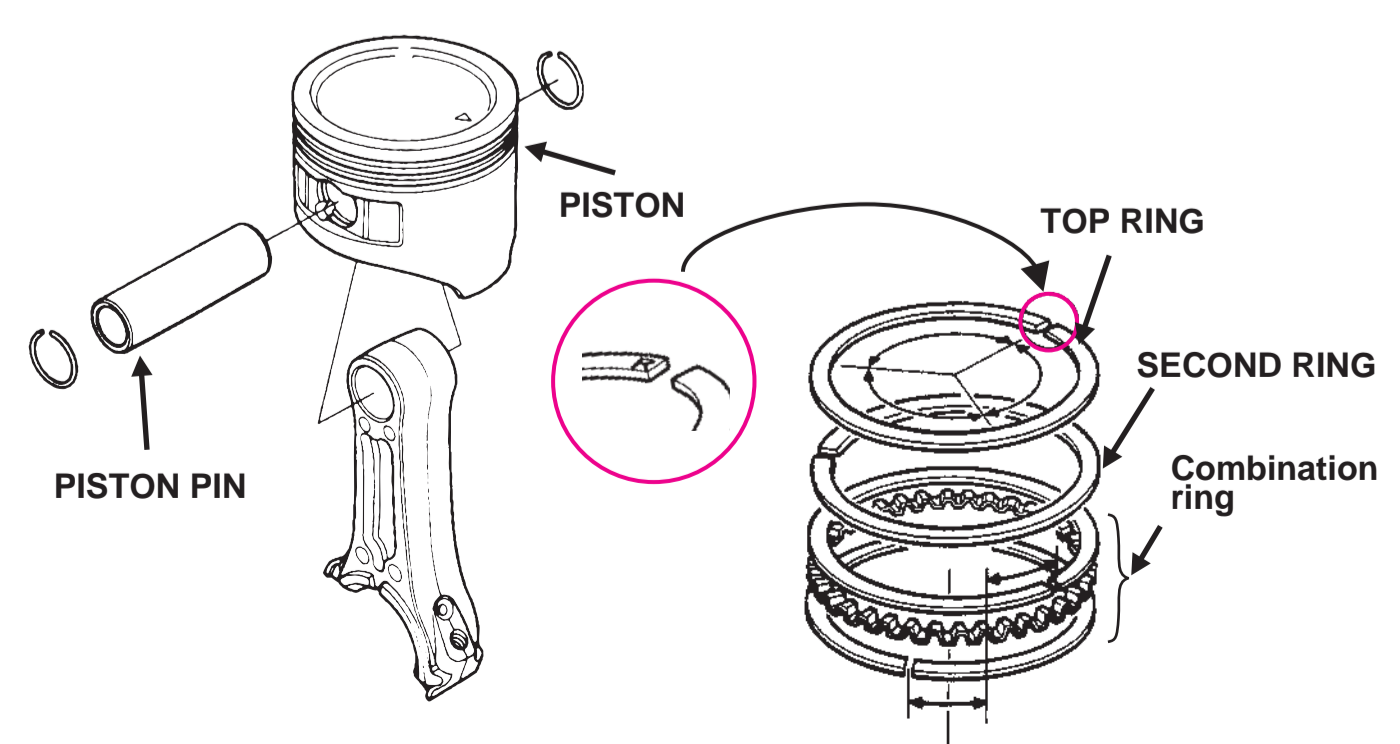


## SPARK PLUG

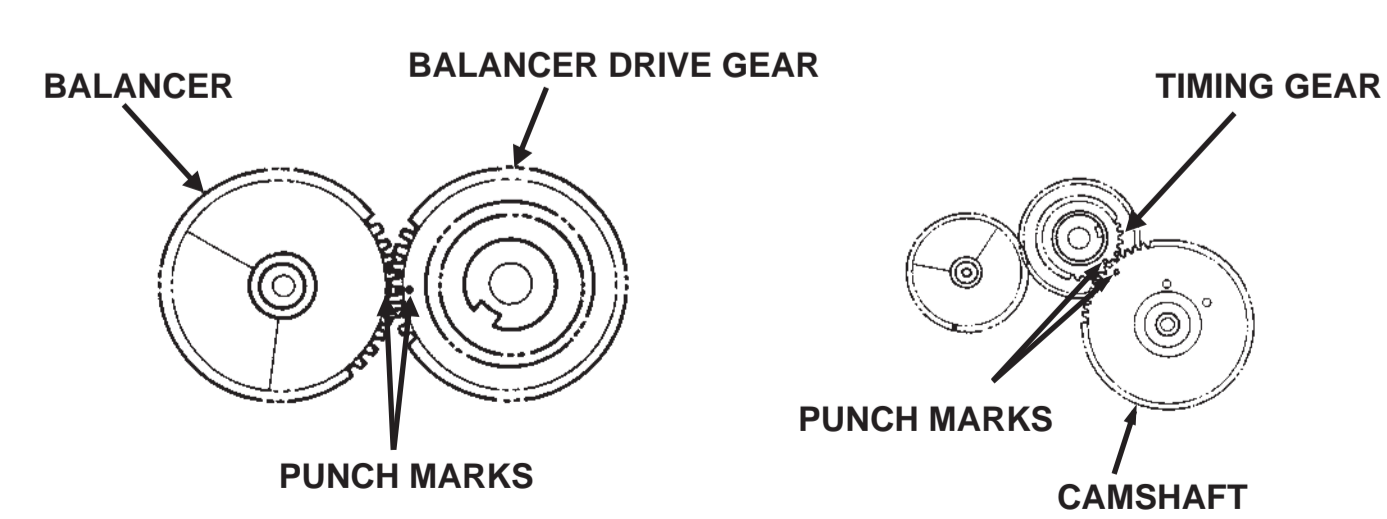


Spark plug gap	0.7-0.8mm(0.028-0.031 in)
Standard spark plug	BP6ES(NGK),W20EP-U(ND*) BPR6ES(NGK),W20EPR-U(ND*)

## PISTON DISASSEMBLY/REASSEMBLY



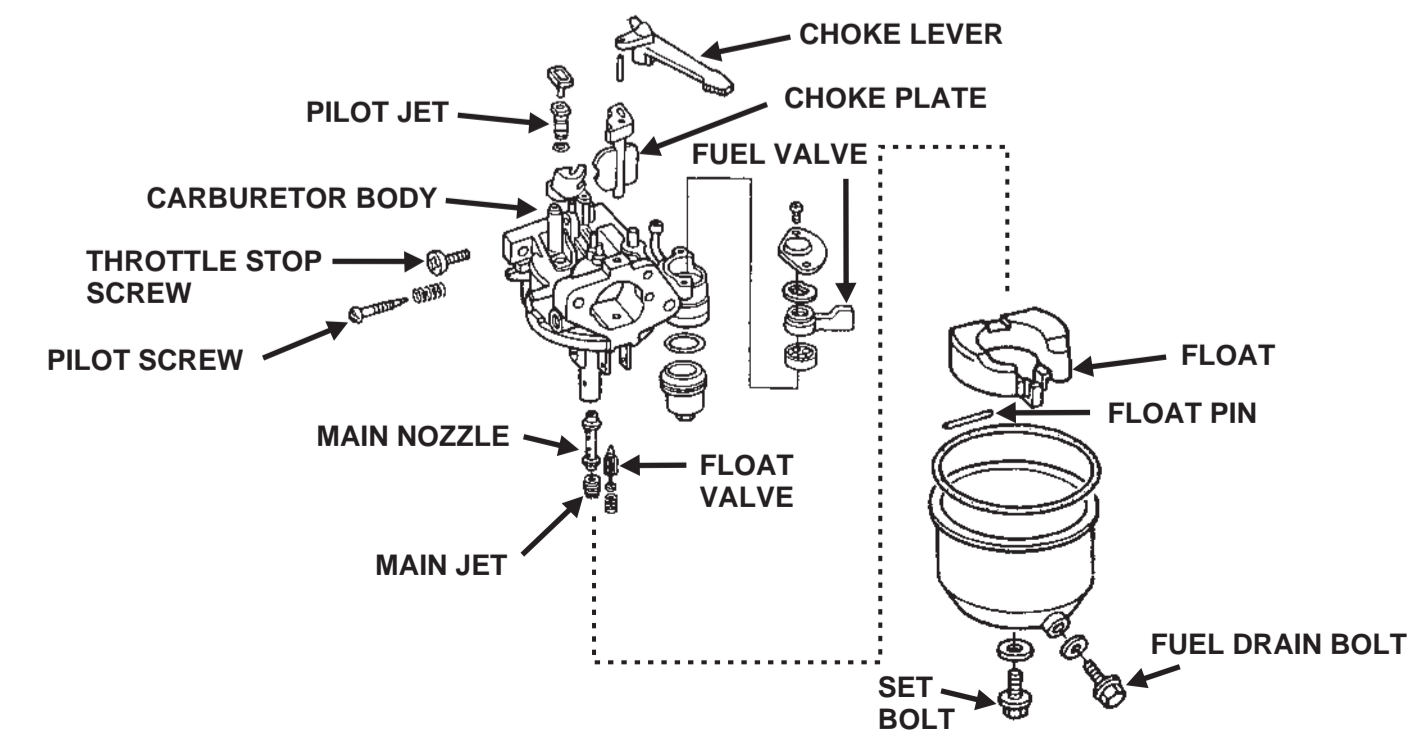
## CAMSHAFT



Align the punch marks on the balancer and balancer drive gear (larger gear on the crankshaft).

Align the punch marks on the camshaft and timing gear (smaller gear on the crankshaft).

## CARBURETOR DISASSEMBLY/REASSEMBLY



## CARBURETOR REMOVAL/INSTALLATION

