

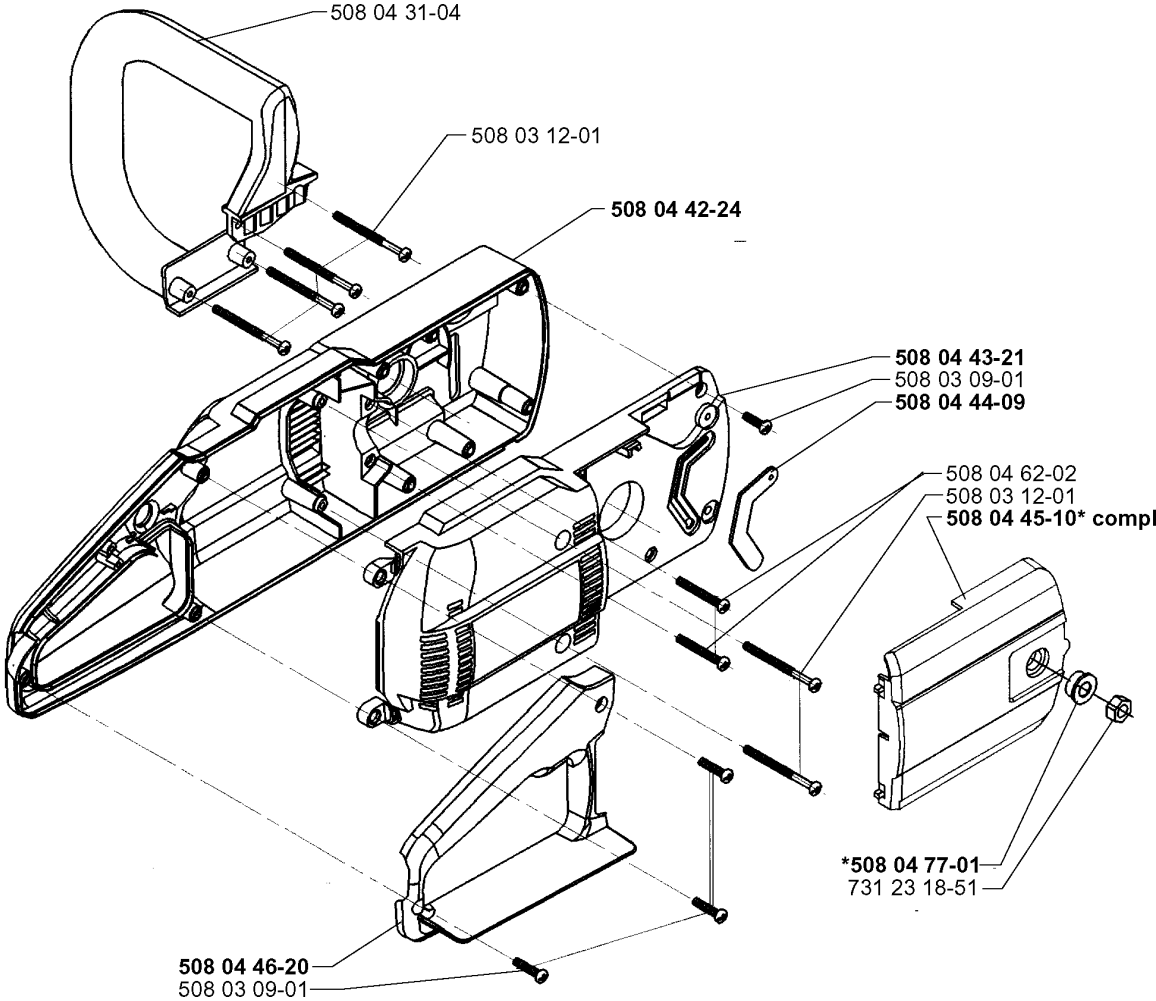


SPARE PARTS LIST

CHAIN SAWS: ELECTRIC

1400 ELECTRIC, 19984000001-Current

A

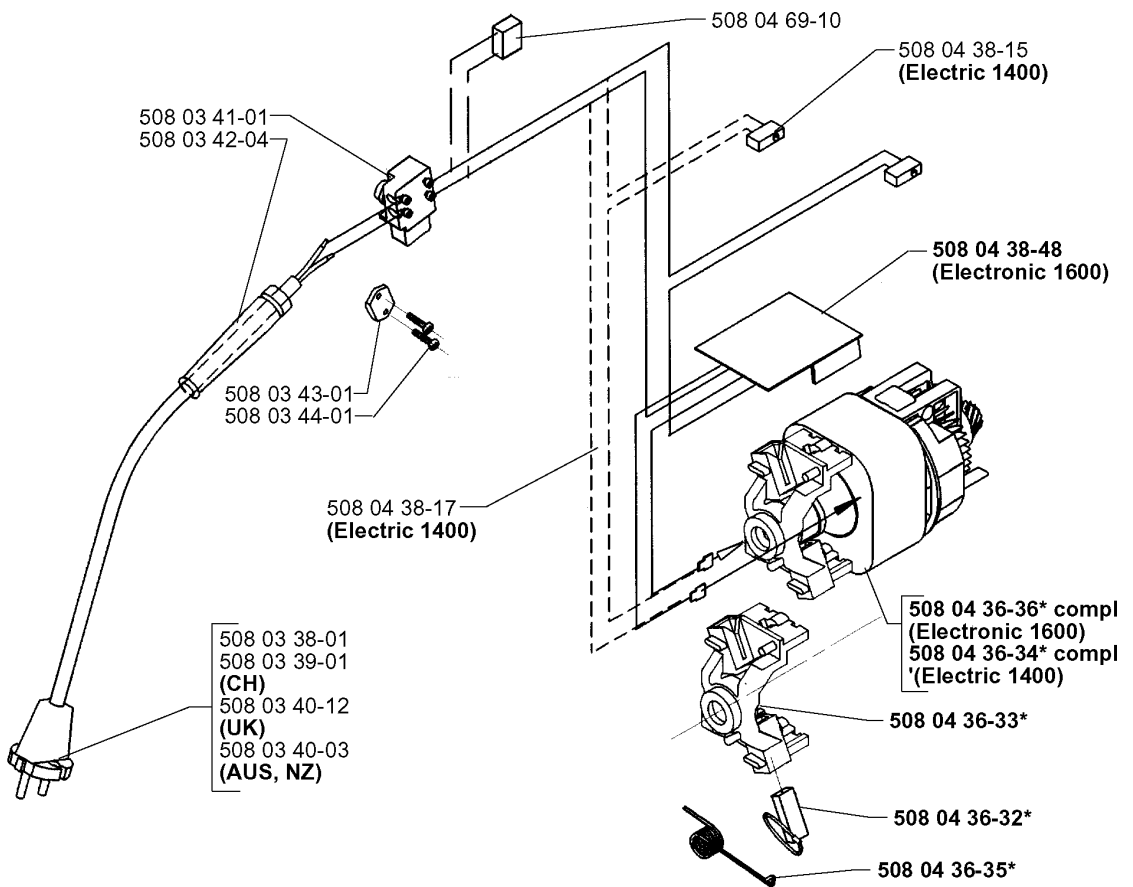


CHASSIS / FRAME

1400 ELECTRIC, 19984000001-Current

Part No	Description	Remark	QTY KIT
508 03 09-01	SCREW		1
508 03 09-01	SCREW		1
508 03 12-01	SCREW		1
508 03 12-01	SCREW		1
508 04 31-04	TUBULAR HANDLE		1
508 04 42-24	HOUSING		1
508 04 43-21	HOUSING		1
508 04 44-09	GASKET		1
508 04 45-10	COVER		1
508 04 46-20	HANDLE		1
508 04 62-02	SCREW		1
508 04 77-01	SPACER		1
731 23 18-51	HEXAGON NUT		1

B



ELECTRICAL

1400 ELECTRIC, 19984000001-Current

Part No	Description	Remark	QTY KIT
508 03 38-01	CABLE ASSY		1
508 03 39-01	CABLE ASSY	CH	1
508 03 40-03	CABLE ASSY	AUS, NZ	1
508 03 40-12	CABLE ASSY	UK	1
508 03 41-01	SWITCH		1
508 03 42-04	SLEEVE		1
508 03 43-01	CABLE CLAMP		1
508 03 44-01	SCREW		1
508 04 36-32	BRUSH		1
508 04 36-33	BMC BRACKET		1
508 04 36-34	ENGINE	ELECTRIC 1400	1
508 04 36-35	SPRING		1
508 04 36-36	ENGINE	ELECTRONIC 1600	1
508 04 38-15	MICRO SWITCH	ELECTRIC 1400	1
508 04 38-17	LEAD	ELECTRIC 1400	1
508 04 38-48	PRINTED CIRCUIT CARD	ELECTRONIC 1600	1
508 04 69-10	CAPACITOR		1

C



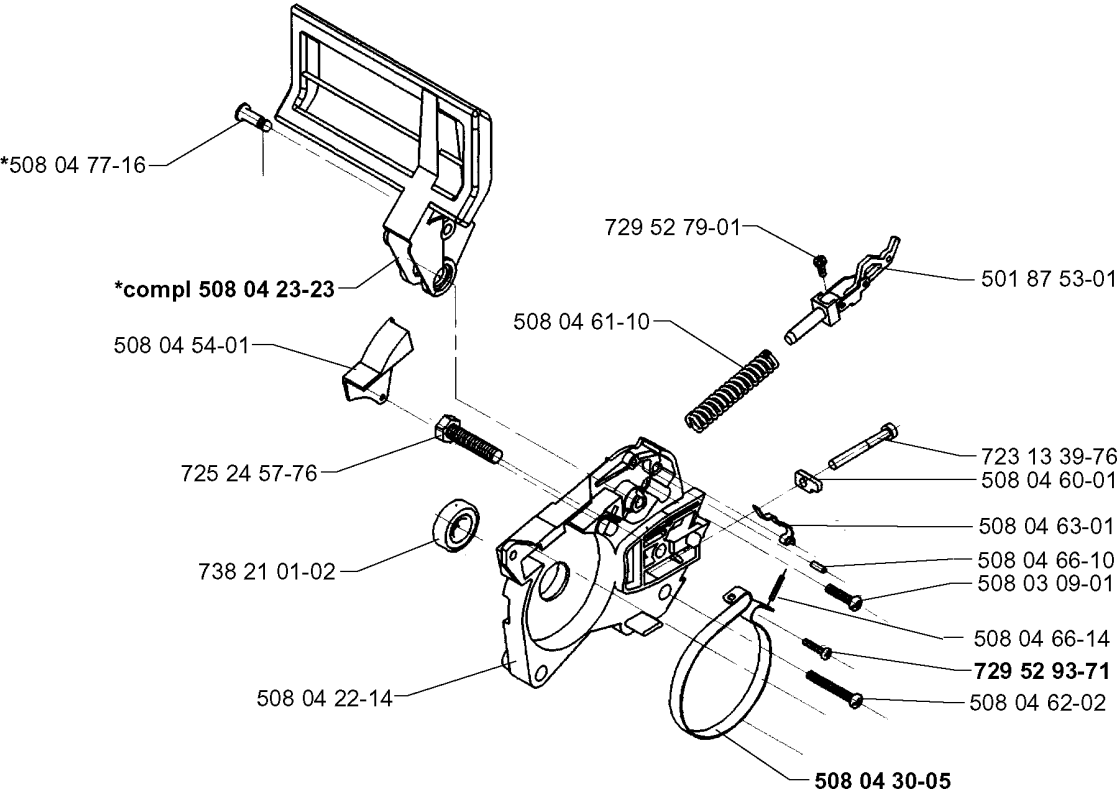
508 03 86-08
(1400)
508 03 86-09
(1600)

DECALS

1400 ELECTRIC, 19984000001-Current

Part No	Description	Remark	QTY KIT
508 03 86-08	DECAL	1400	1
508 03 86-09	DECAL	1600	1

D

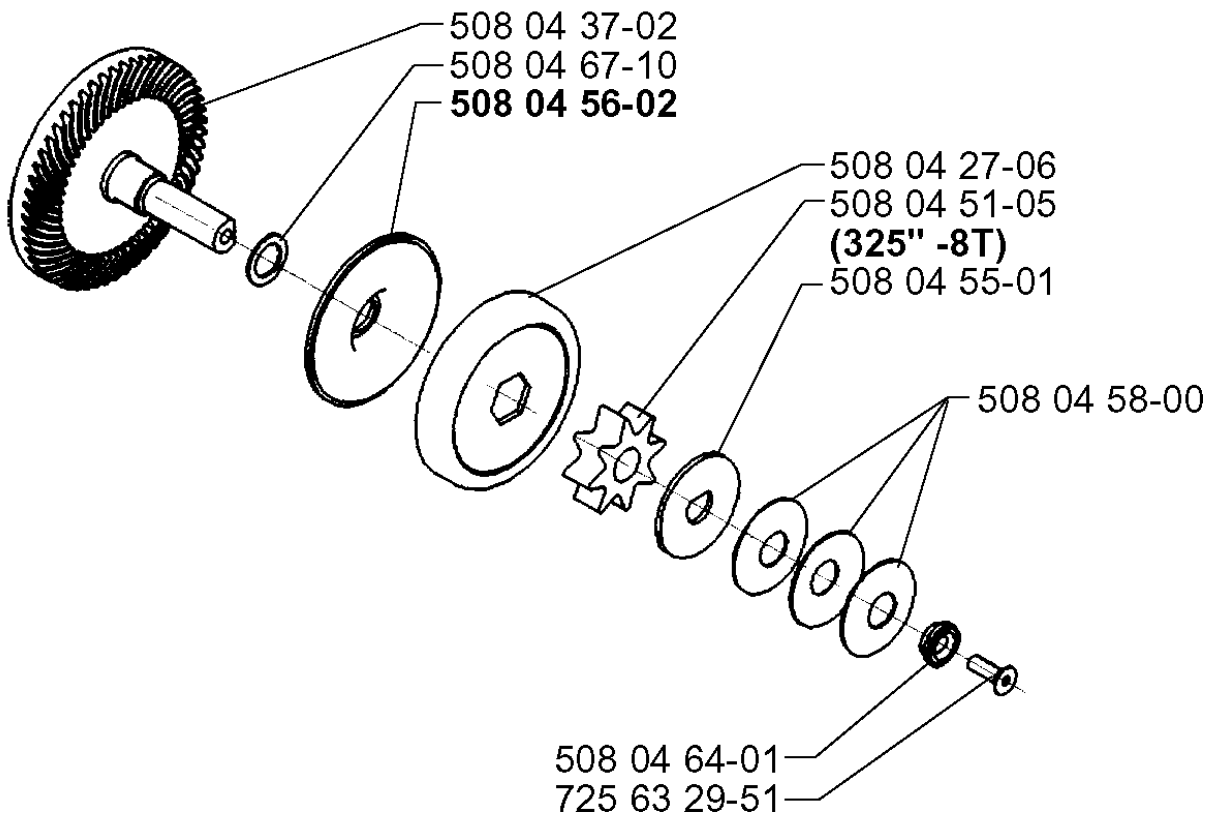


CHAIN BRAKE

1400 ELECTRIC, 19984000001-Current

Part No	Description	Remark	QTY KIT
501 87 53-01	KNEE JOINT ASSY		1
508 03 09-01	SCREW		1
508 04 22-14	BRACKET		1
508 04 23-23	LOOP		1
508 04 30-05	BRAKE BAND		1
508 04 54-01	INSULATOR		1
508 04 60-01	CHAIN TENSIONER		1
508 04 61-10	SPRING		1
508 04 62-02	SCREW		1
508 04 63-01	SPRING		1
508 04 66-10	PEN		1
508 04 66-14	SCREW		1
508 04 77-16	PIN RETAINING SCREW		1
723 13 39-76	SCREW SLCHM		1
725 24 57-76	SCREW EHHM		1
729 52 79-01	SCREW CRPANT		1
729 52 93-71	SCREW CRPANT		1
738 21 01-02	BALL BEARING		1

E

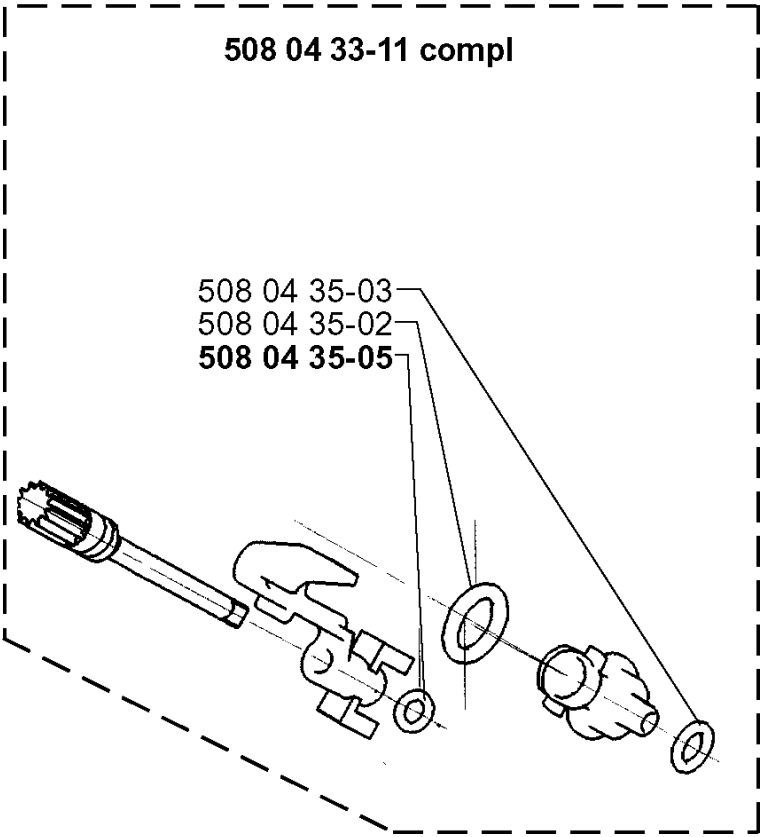
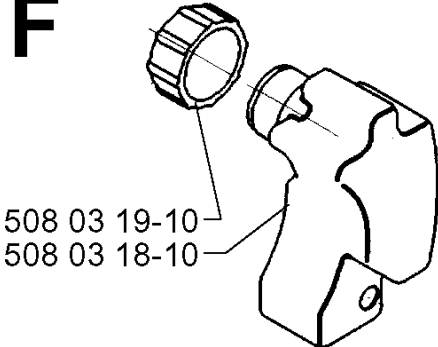


CLUTCH

1400 ELECTRIC, 19984000001-Current

Part No	Description	Remark	QTY KIT
508 04 27-06	CLUTCH DRUM		1
508 04 37-02	GEAR WHEEL		1
508 04 51-05	GEAR	325 -8T	1
508 04 55-01	PLATE		1
508 04 56-02	PLATE		1
508 04 58-00	WASHER		1
508 04 64-01	CARRIER		1
508 04 67-10	WASHER		1
725 63 29-51	SCREW IHCSFM		1

F

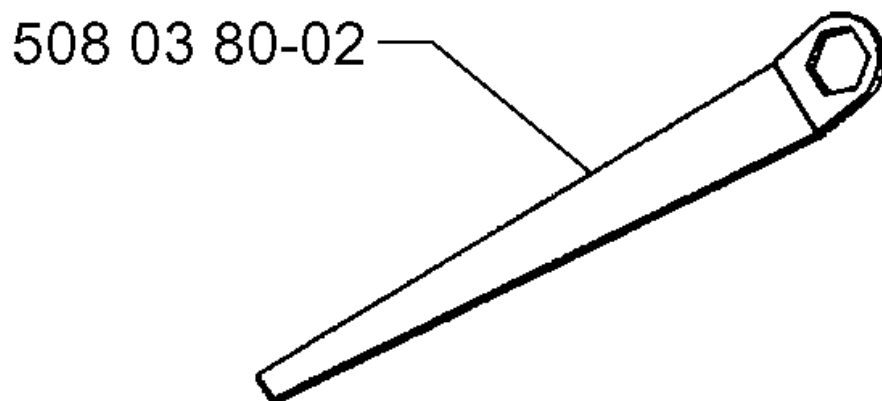
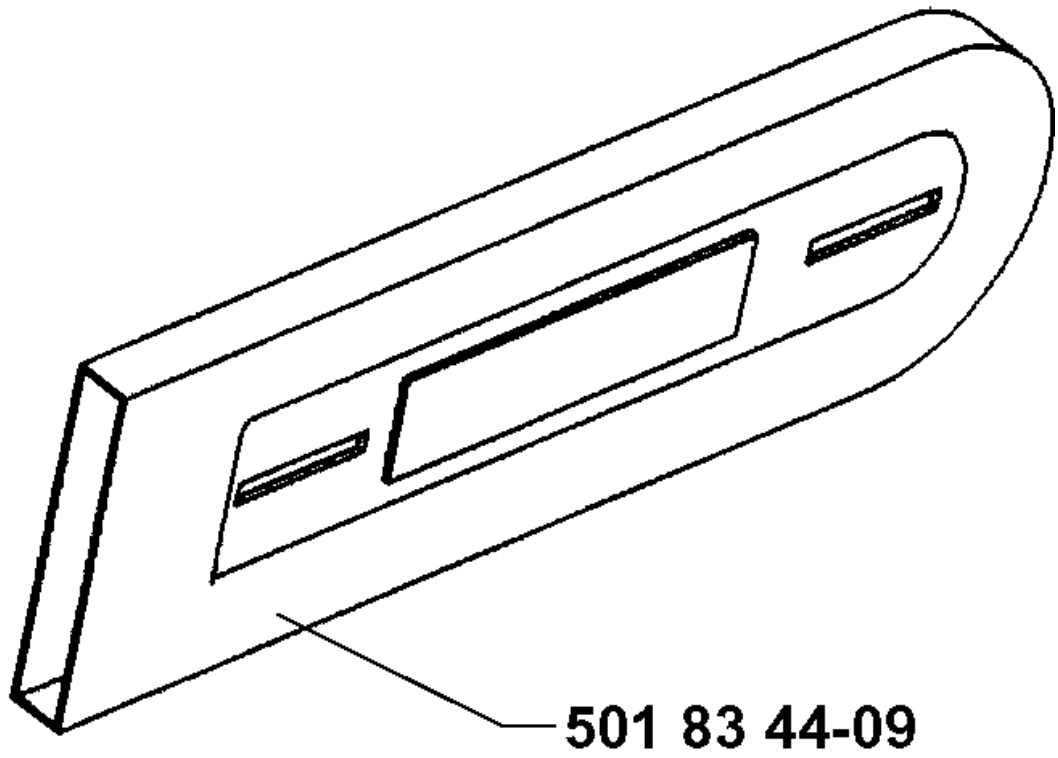


OIL TANK

1400 ELECTRIC, 19984000001-Current

Part No	Description	Remark	QTY KIT
508 03 18-10	OIL TANK		1
508 03 19-10	TANK		1
508 04 33-11	OIL PUMP		1
508 04 35-02	O-RING		1
508 04 35-03	O-RING		1
508 04 35-05	O-RING		1

G



ACCESSORIES

1400 ELECTRIC, 19984000001-Current

Part No	Description	Remark	QTY KIT
501 83 44-09	BAR COVER		1
508 03 80-02	WRENCH		1