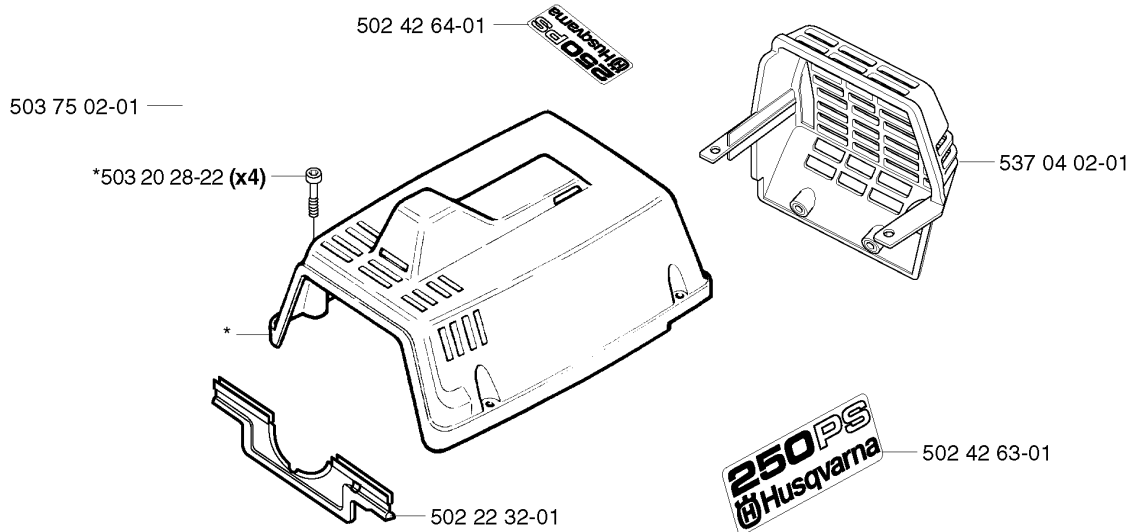




SPARE PARTS LIST



POLE PRUNER/POLE SAWS
250PS, 20023500001-Current

A *compl 502 22 46-05



⚠ WARNING ⚠

503 75 02-01

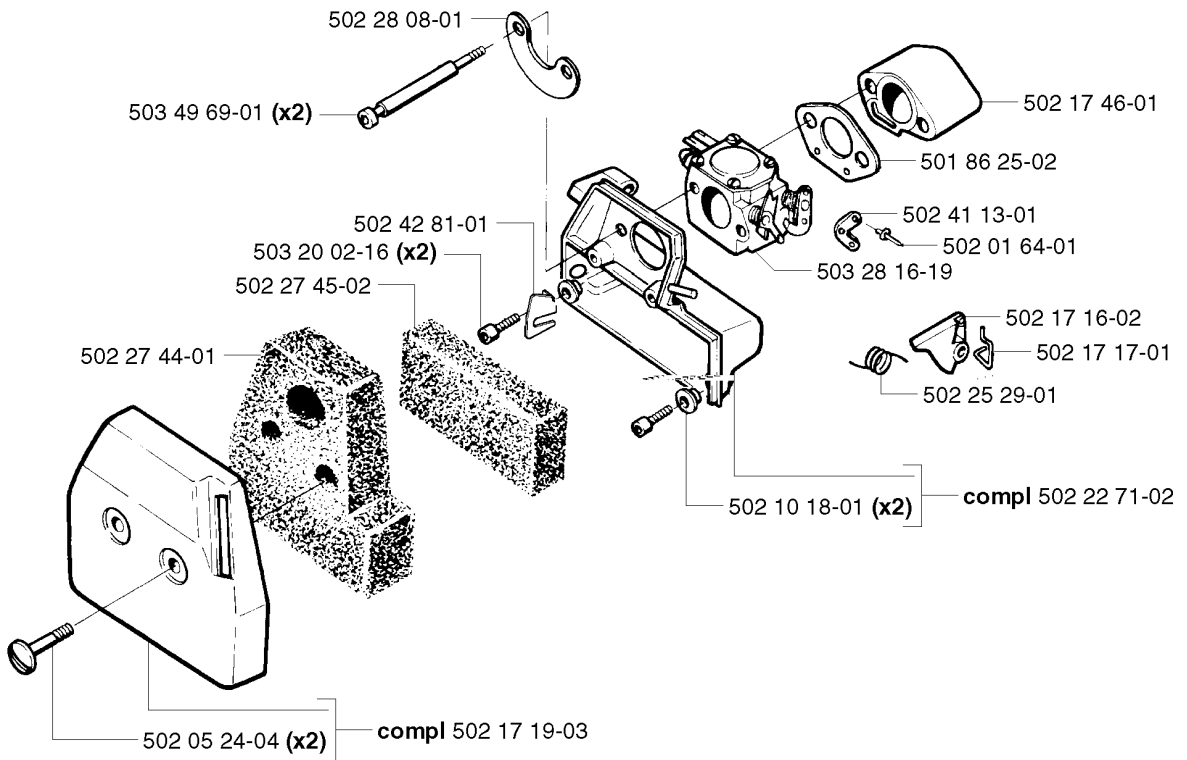
 READ OPERATORS MANUAL. FOLLOW ALL WARNINGS AND INSTRUCTIONS. FAILURE TO DO SO CAN RESULT IN SERIOUS INJURY.	 THE MACHINE EMITS NOISE WHICH CAN IMPAIR YOUR HEARING. ALWAYS USE HEARING PROTECTION.
--	--

CYLINDER COVER

250PS, 20023500001-Current

Part No	Description	Remark	QTY KIT
502 22 32-01	SEALING COLLAR		1
502 22 46-05	CYLINDER COVER ASSY		1
502 42 63-01	DECAL		1
502 42 63-01	DECAL		1
502 42 64-01	DECAL		1
502 42 64-01	DECAL		1
503 20 28-22	SCREW IHSCMO		4
503 75 02-01	DECAL		1
503 75 02-01	DECAL		1
537 04 02-01	HEAT PROTECTOR		1

B

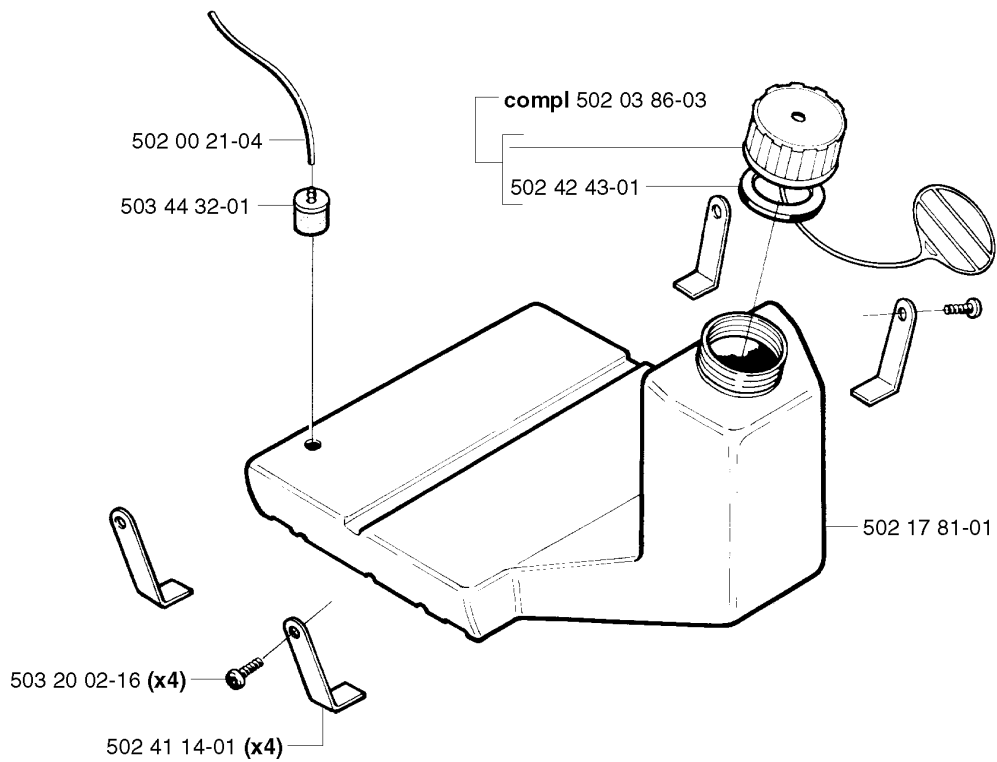
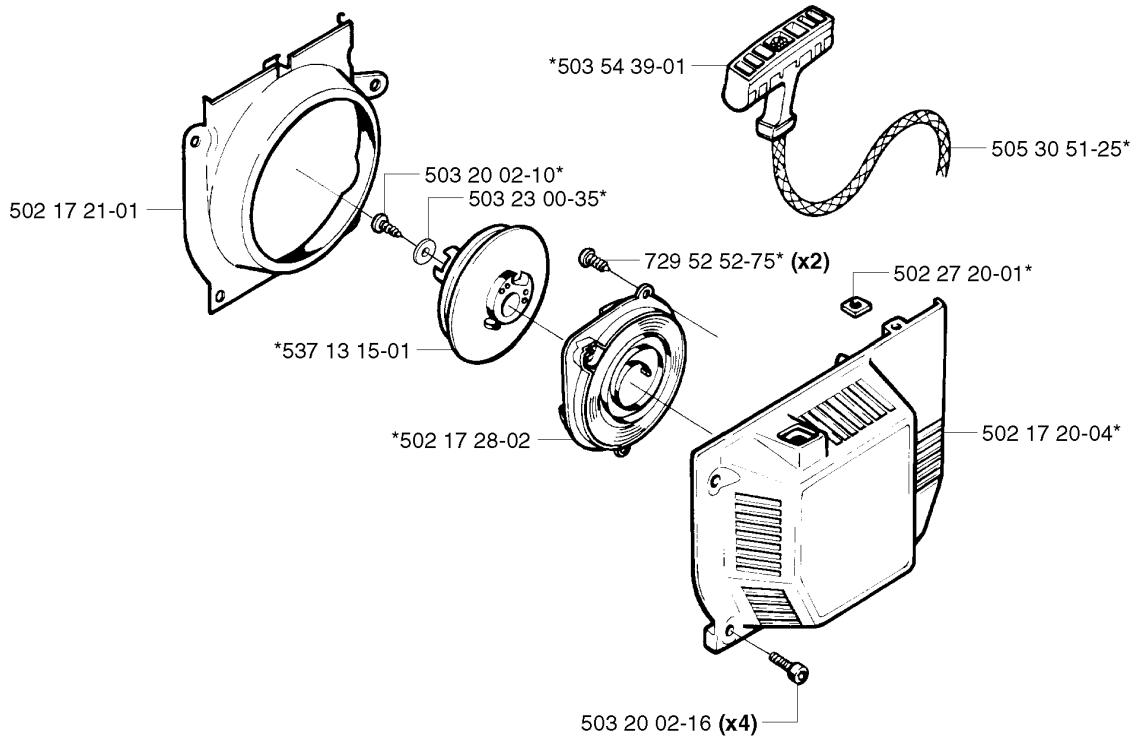


CARBURETOR & AIR FILTER

250PS, 20023500001-Current

Part No	Description	Remark	QTY KIT
501 86 25-02	GASKET		1
502 01 64-01	RIVET		1
502 05 24-04	SCREW		2
502 10 18-01	SPACING SLEEVE		2
502 17 16-02	CHOKE CONTROL		1
502 17 17-01	LÄNKTRÅD		1
502 17 19-03	FILTER COVER		1
502 17 46-01	MANIFOLD		1
502 22 71-02	FILTER HOLDER		1
502 25 29-01	SPRING		1
502 27 44-01	AIR FILTER		1
502 27 45-02	PREFILTER		1
502 28 08-01	WASHER		1
502 41 13-01	THROTTLE LEVER		1
502 42 81-01	STAPLE		1
503 20 02-16	SCREW IHSCFM		2
503 28 16-19	CARBURETTOR		1
503 49 69-01	SCREW		2

C *compl 502 17 22-09



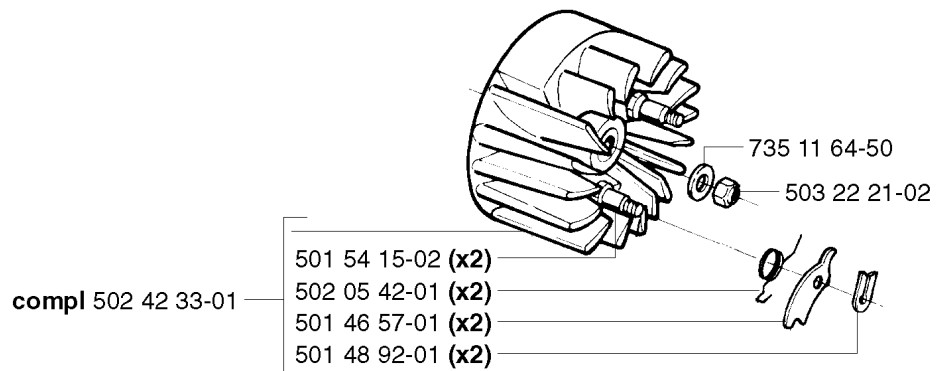
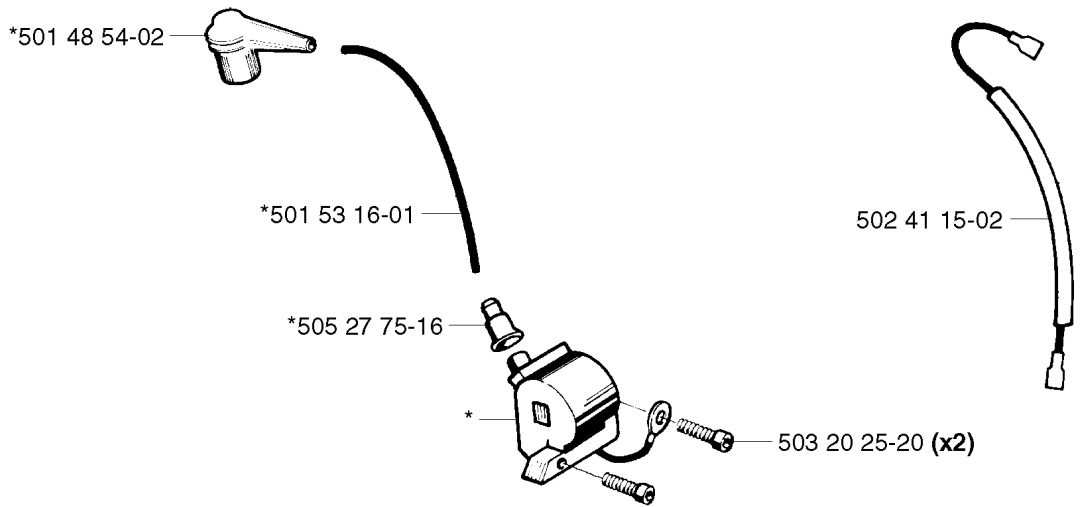
STARTER

250PS, 20023500001-Current

Part No	Description	Remark	QTY KIT
502 00 21-04	FUEL HOSE		1
502 03 86-03	TANK CAP ASSY		1
502 17 20-04	STARTER HOUSING		1
502 17 21-01	LEDSKENA		1
502 17 22-09	STARTER HOUSING		1
502 17 28-02	KASSETT M.FJÄDER		1
502 17 81-01	FUEL TANK		1
502 27 20-01	NUT		1
502 41 14-01	BRACKET		4
502 42 43-01	GASKET		1
503 20 02-10	SCREW IHSCFM		1
503 20 02-16	SCREW IHSCFM		4
503 20 02-16	SCREW IHSCFM		4
503 23 00-35	WASHER		1
503 44 32-01	FUEL FILTER		1
503 54 39-01	STARTER HANDLE		1
505 30 51-25	STARTER CORD		1
537 13 15-01	STARTER PULLEY		1
729 52 52-75	SCREW CRPANT		2

D

*compl 503 90 12-01

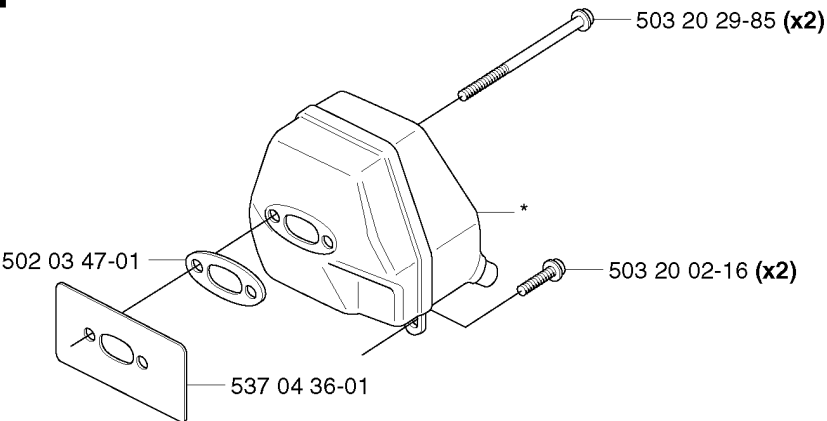


IGNITION SYSTEM

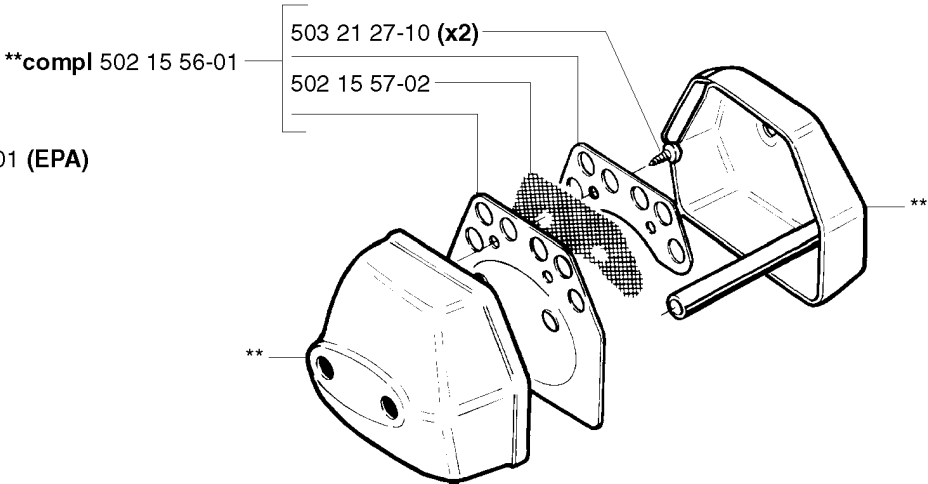
250PS, 20023500001-Current

Part No	Description	Remark	QTY KIT
501 46 57-01	PAWL		2
501 48 54-02	SPARK PLUG CAP		1
501 48 92-01	LOCKWASHER		2
501 53 16-01	CABLE		1
501 54 15-02	DRIVE PIN		2
502 05 42-01	SPRING		2
502 41 15-02	CABLE		1
502 42 33-01	FILTER DIFF. SATS		1
503 20 25-20	SCREW IHSCM		2
503 22 21-02	LOCK NUT		1
503 90 12-01	ELECTRONIC MODULE		1
505 27 75-16	CABLE SLEEVE		1
735 11 64-50	SPRING WASHER		1

E *compl 537 15 06-01



**compl 537 15 07-01 (EPA)

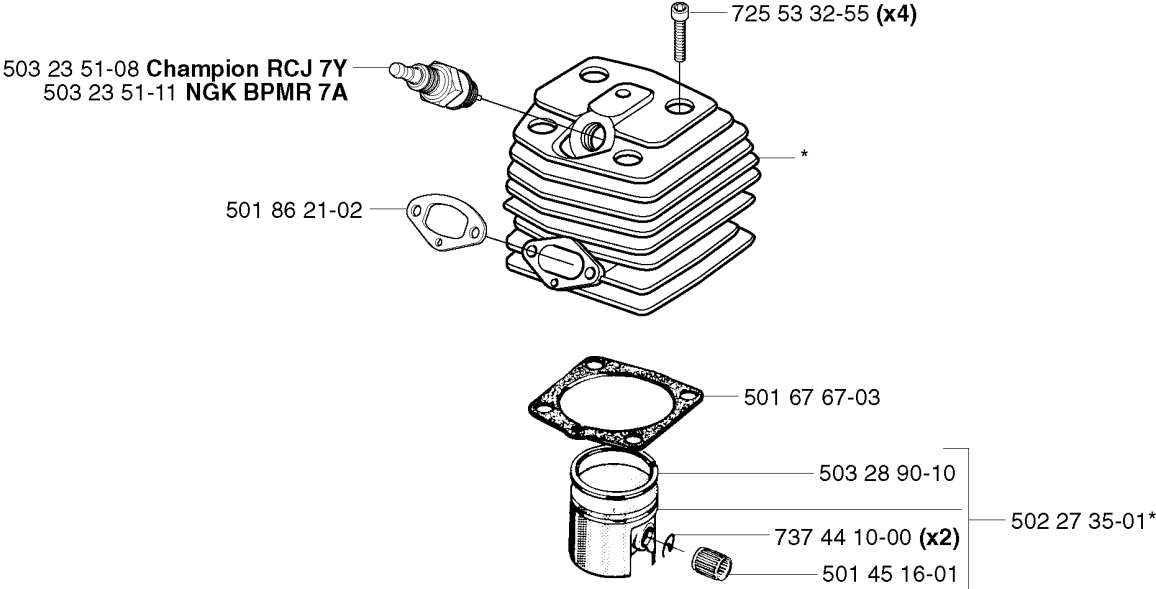


MUFFLER

250PS, 20023500001-Current

Part No	Description	Remark	QTY KIT
502 03 47-01	FLANGE WASHER		1
502 15 56-01	BAFFLE PLATE		1
502 15 57-02	SPARK ARRESTER		1
503 20 02-16	SCREW IHSCFM		2
503 20 29-85	SCREW IHSCFM		2
503 21 27-10	SCREW CCRPANT		2
537 04 36-01	BAFFLE PLATE		1
537 15 06-01	MUFFLER ASSY		1
537 15 07-01	MUFFLER ASSY	EPA	1

F *compl 502 27 34-01

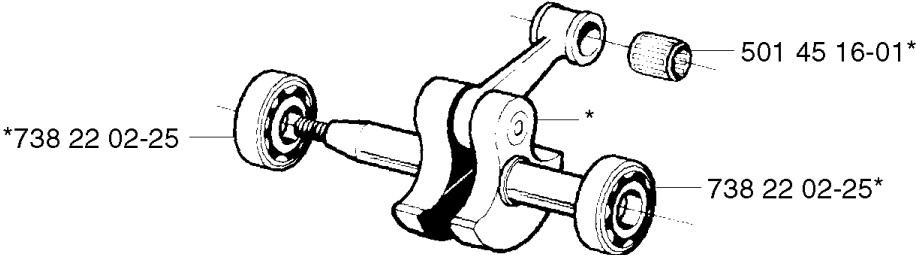


CYLINDER PISTON

250PS, 20023500001-Current

Part No	Description	Remark	QTY KIT
501 45 16-01	NEEDLE BEARING		1
501 67 67-03	CYLINDER BASE GASKET		1
501 86 21-02	GASKET		1
502 27 34-01	CYLINDER		1
502 27 35-01	PISTON ASSY		1
503 23 51-08	SPARK PLUG	CHAMPION RCJ 7Y	1
503 23 51-11	SPARK PLUG	NGK BPMR 7A	1
503 28 90-10	PISTON RING		1
725 53 32-55	SCREW		4
737 44 10-00	SNAP RING		2

G *compl 502 05 08-74

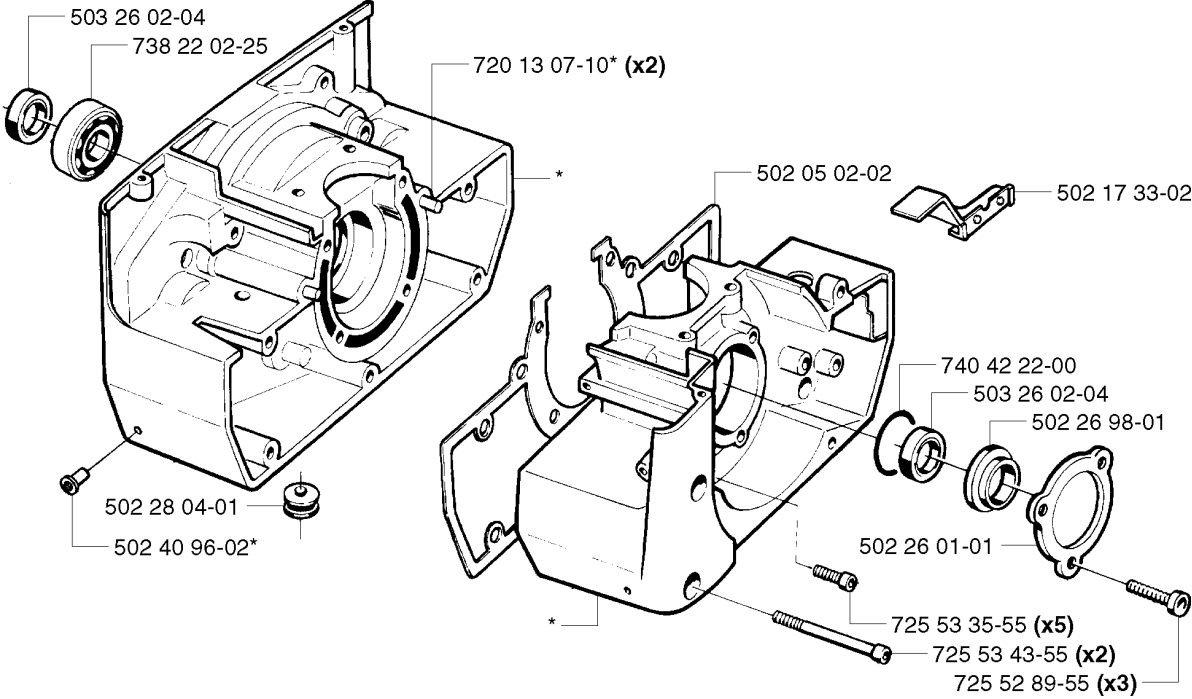


CRANKSHAFT

250PS, 20023500001-Current

Part No	Description	Remark	QTY KIT
501 45 16-01	NEEDLE BEARING		1
502 05 08-74	CRANKSHAFT ASSY		1
738 22 02-25	BALL BEARING		1
738 22 02-25	BALL BEARING		1

H *compl 502 41 20-02



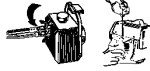
CRANKCASE

250PS, 20023500001-Current

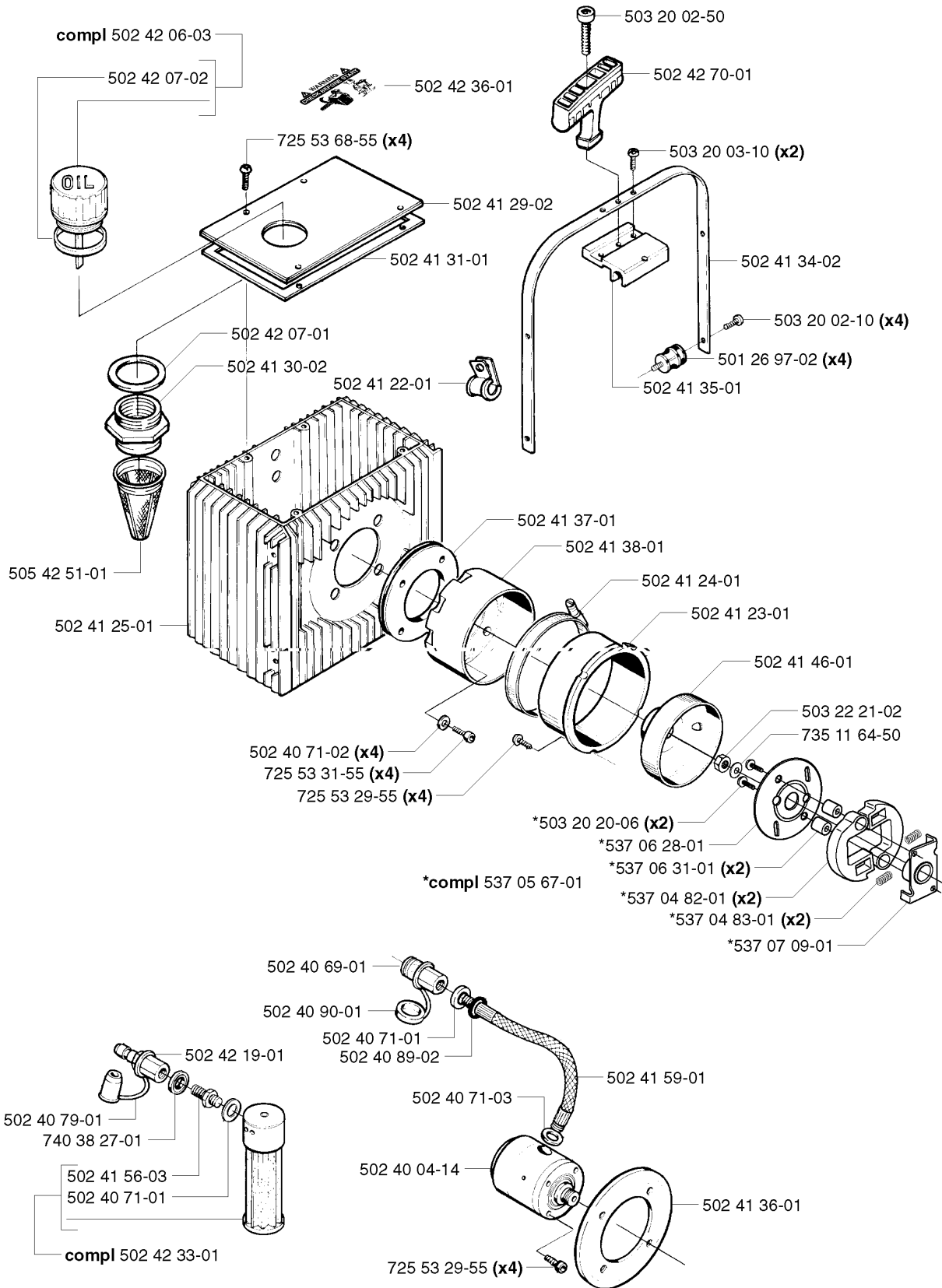
Part No	Description	Remark	QTY KIT
502 05 02-02	CRANKCASE		1
502 17 33-02	BACKING PLATE		1
502 26 01-01	BEARING CAGE		1
502 26 98-01	SEALING RING HOLDER		1
502 28 04-01	GROMMET		1
502 40 96-02	RIVET NUT		1
502 41 20-02	CRANKCASE		1
503 26 02-04	SEALING RING		1
503 26 02-04	SEALING RING		1
720 13 07-10	PARALLEL PIN		2
725 52 89-55	SCREW IHSCM		3
725 53 35-55	SCREW IHSCM		5
725 53 43-55	SCREW IHSCM		2
738 22 02-25	BALL BEARING		1
740 42 22-00	O-RING		1

J

WARNING
CHECK BEFORE START



502 42 36-01

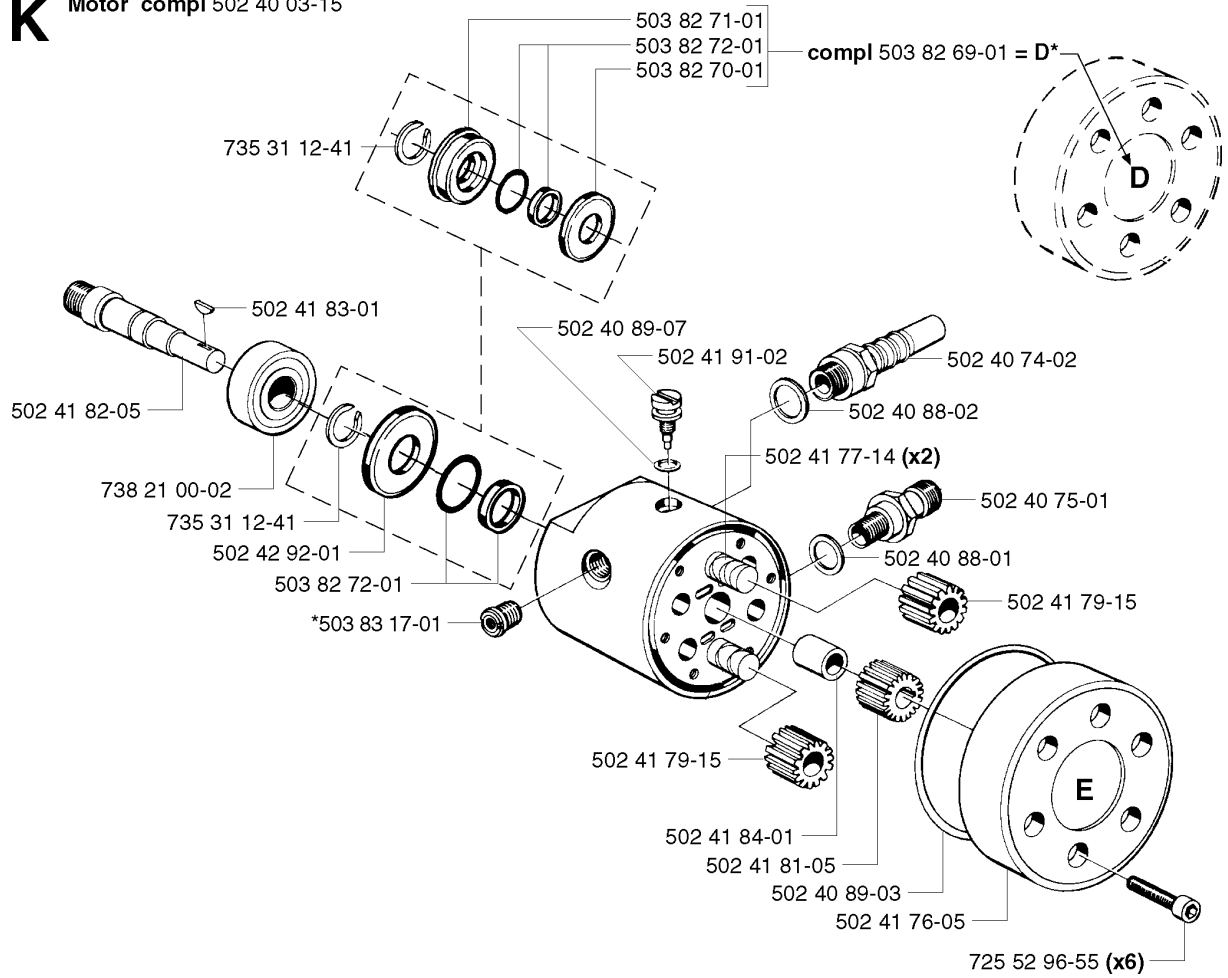


OIL TANK

250PS, 20023500001-Current

Part No	Description	Remark	QTY KIT
501 26 97-02	ANTIVIBRATION ELEMENT		4
502 40 04-14	HYDRAULIC PUMP		1
502 40 69-01	CLUTCH		1
502 40 71-01	WASHER		1
502 40 71-01	WASHER		1
502 40 71-02	WASHER		4
502 40 71-03	WASHER		1
502 40 79-01	DUST COVER		1
502 40 89-02	O-RING		1
502 40 90-01	DUST COVER		1
502 41 22-01	CLIP		1
502 41 23-01	COMPRESSION SLEEVE		1
502 41 24-01	HOSE CLAMP		1
502 41 25-01	TANK HYDRAULTANK		1
502 41 29-02	HUB CAP		1
502 41 30-02	THREAD INSERT		1
502 41 31-01	GASKET		1
502 41 34-02	SHACKLE		1
502 41 35-01	CONSOLE		1
502 41 36-01	FLANGE		1
502 41 37-01	GASKET		1
502 41 38-01	SLEEVE		1
502 41 46-01	CLUTCH DRUM ASSY		1
502 41 56-03	NIPPLE		1
502 41 59-01	PRESSURE HOSE		1
502 42 06-03	PROPP KPL		1
502 42 07-01	GASKET		1
502 42 07-02	GASKET		1
502 42 19-01	NIPPLE		1
502 42 33-01	FILTER DIFF. SATS		1
502 42 36-01	DECAL		1
502 42 36-01	DECAL		1
502 42 70-01	HANDLE ASSY		1
503 20 02-10	SCREW IHSCFM		4
503 20 02-50	SCREW IHSCFM		1
503 20 03-10	SCREW IHSCFM		2
503 20 20-06	SCREW IHSCM		2
503 22 21-02	LOCK NUT		1
505 42 51-01	FILTER		1
537 04 82-01	CLUTCH SHOE		2
537 04 83-01	CLUTCH SPRING		2
537 05 67-01	CLUTCH ASSY		1
537 06 28-01	WASHER		1
537 06 31-01	BEARING BUSH		2
537 07 09-01	CLUTCH		1
725 53 29-55	SCREW IHSCM		4
725 53 29-55	SCREW IHSCM		4
725 53 31-55	SCREW IHSCM		4
725 53 68-55	SCREW IHSCM		4
735 11 64-50	SPRING WASHER		1
740 38 27-01	SEALING WASHER		1

K Motor compl 502 40 03-15

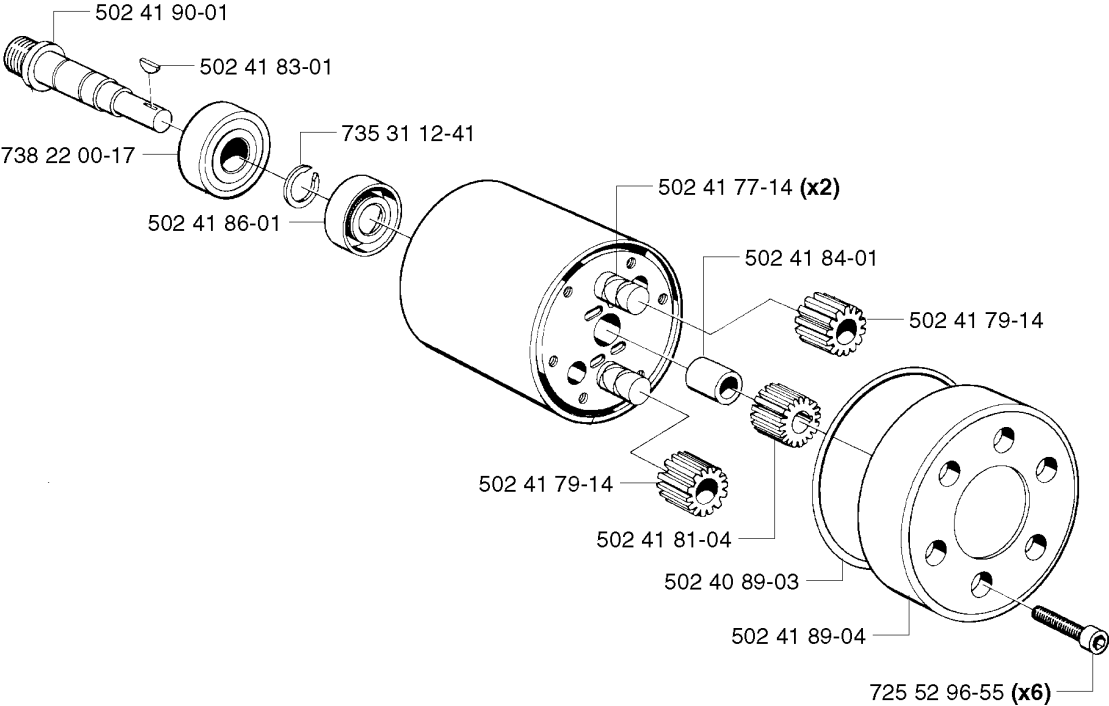


HYDRAULIC PUMP - MOTOR

250PS, 20023500001-Current

Part No	Description	Remark	QTY KIT
502 40 03-15	HYDRAULIC MOTOR		1
502 40 74-02	HOSE NIPPLE		1
502 40 75-01	NIPPLE		1
502 40 88-01	WASHER		1
502 40 88-02	WASHER		1
502 40 89-03	O-RING		1
502 40 89-07	O-RING		1
502 41 76-05	PRESSURE CHAMBER		1
502 41 77-14	SHAFT		2
502 41 79-15	GEAR WHEEL		1
502 41 79-15	GEAR WHEEL		1
502 41 81-05	GEAR WHEEL		1
502 41 82-05	AXLE		1
502 41 83-01	WOODRUFF KEY		1
502 41 84-01	BEARING		1
502 41 91-02	ADJUSTER		1
502 42 92-01	WASHER		1
503 82 69-01	SUPPLEMENT	=D	1
503 82 70-01	SEALING		1
503 82 71-01	SEALING		1
503 82 72-01	SEALING		1
503 82 72-01	SEALING		1
503 83 17-01	VALVE		1
725 52 96-55	SCREW		6
735 31 12-41	RETAINING RING		1
735 31 12-41	RETAINING RING		1
738 21 00-02	BALL BEARING		1

K Pump compl 502 40 04-14



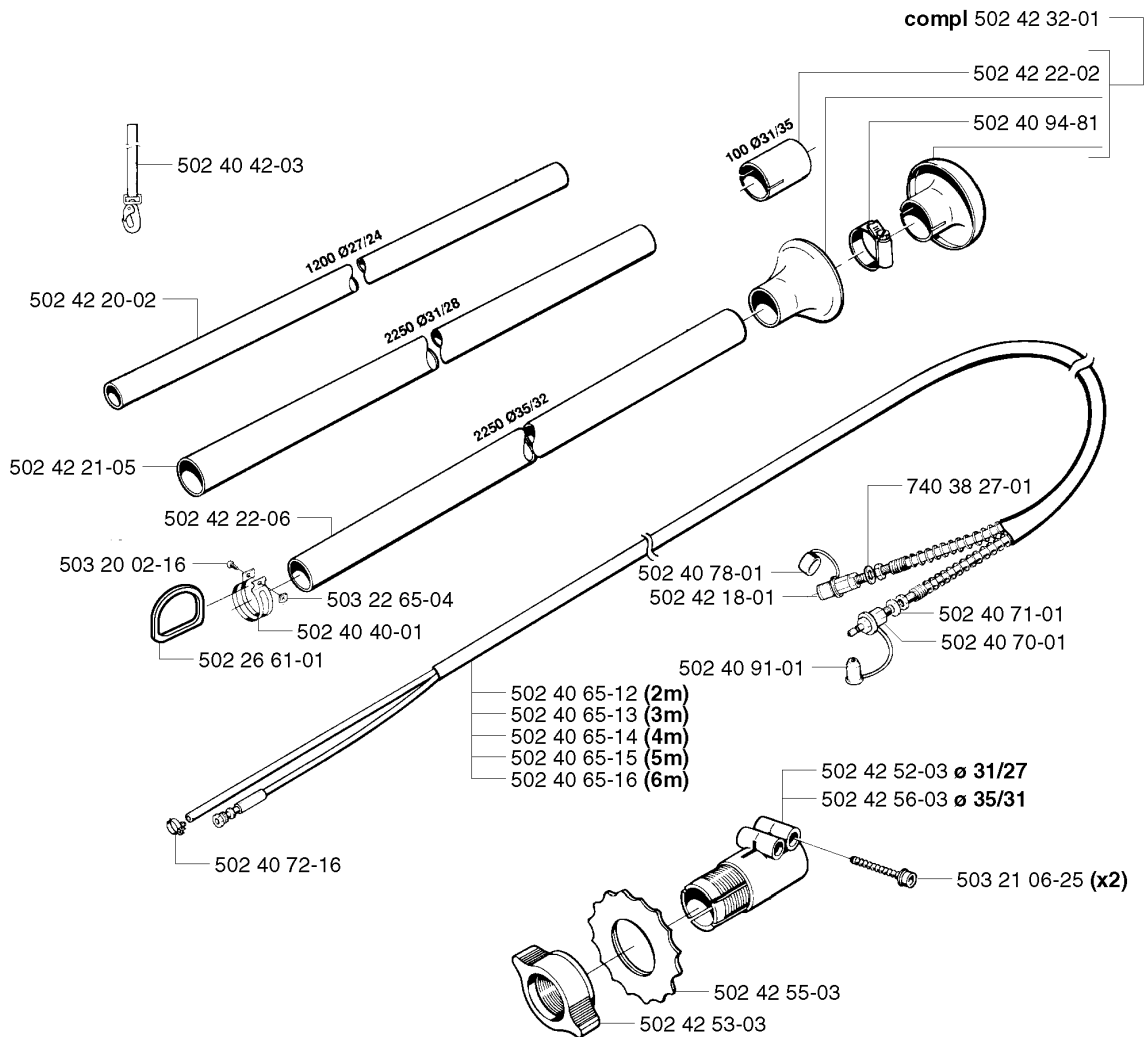
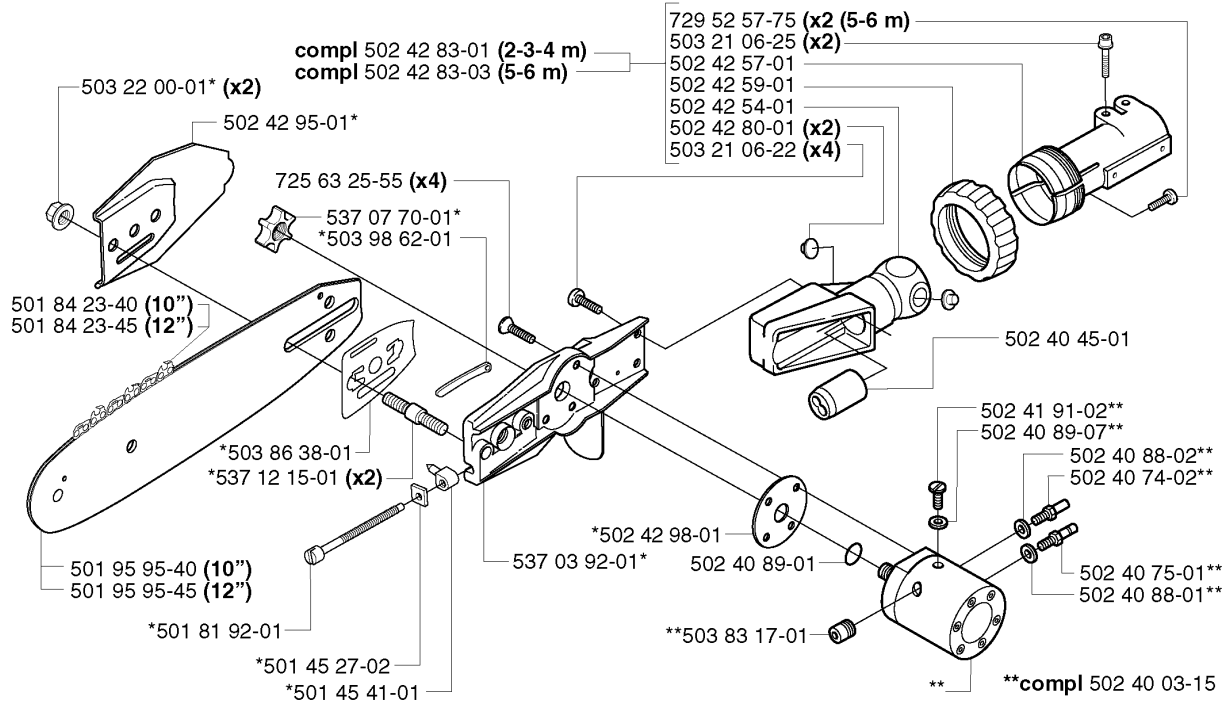
HYDRAULIC PUMP - MOTOR

250PS, 20023500001-Current

Part No	Description	Remark	QTY KIT
502 40 04-14	HYDRAULIC PUMP		1
502 40 89-03	O-RING		1
502 41 77-14	SHAFT		2
502 41 79-14	GEAR WHEEL		1
502 41 79-14	GEAR WHEEL		1
502 41 81-04	GEAR WHEEL		1
502 41 83-01	WOODRUFF KEY		1
502 41 84-01	BEARING		1
502 41 86-01	SEALING RING		1
502 41 89-04	PRESSURE CHAMBER		1
502 41 90-01	AXLE		1
725 52 96-55	SCREW		6
735 31 12-41	RETAINING RING		1
738 22 00-17	BALL BEARING		1



*compl 537 16 49-01

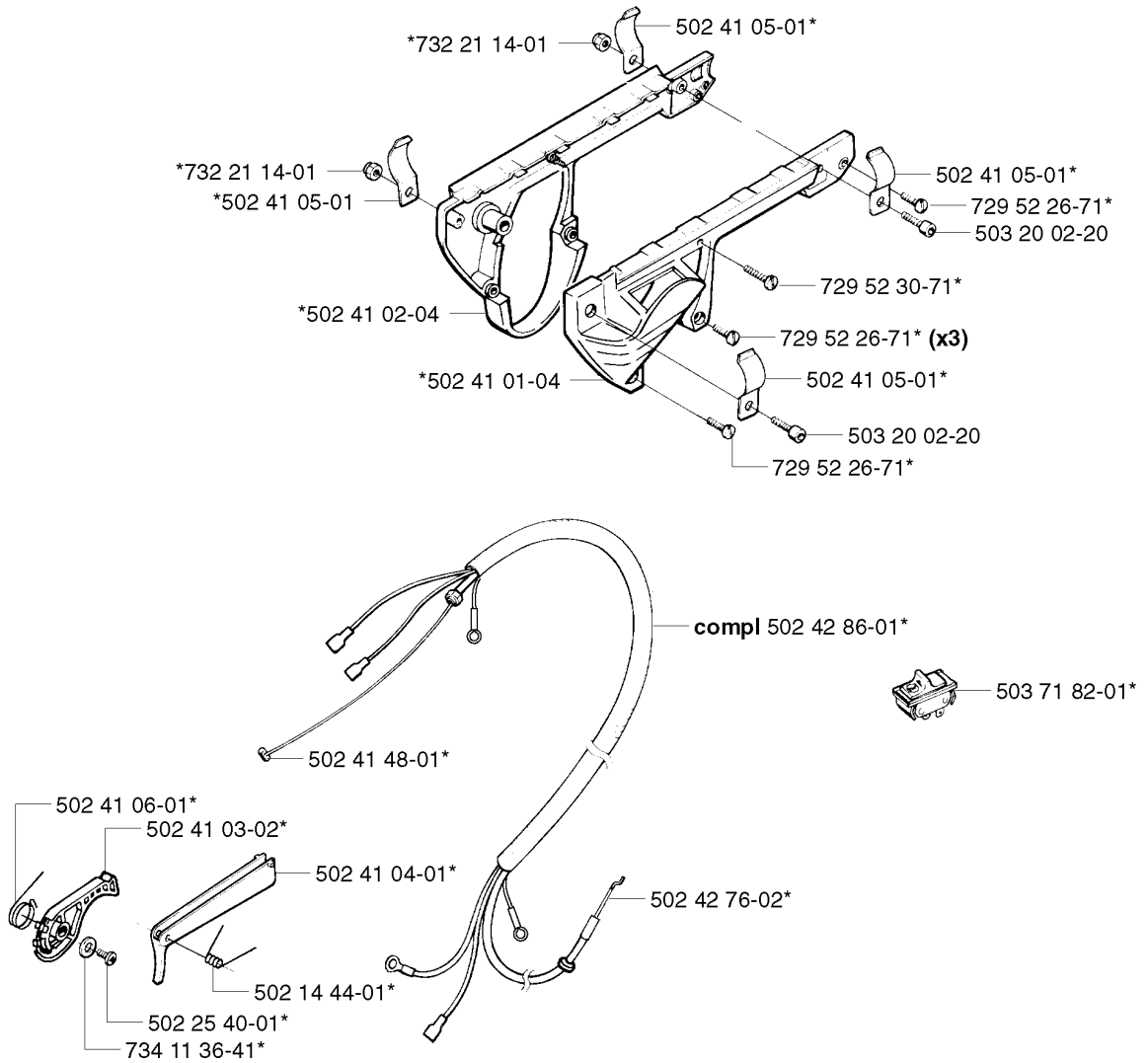


SAW HEAD

250PS, 20023500001-Current

Part No	Description	Remark	QTY KIT
501 45 27-02	LOCK NUT		1
501 45 41-01	NUT		1
501 81 92-01	SCREW		1
501 84 23-40	SAW CHAIN	10	1
501 84 23-45	SAW CHAIN	12	1
501 95 95-40	BAR	10	1
501 95 95-45	BAR	12	1
502 26 61-01	LOOP		1
502 40 03-15	HYDRAULIC MOTOR		1
502 40 40-01	SHACKLE		1
502 40 42-03	BELT		1
502 40 45-01	GASKET		1
502 40 65-12	HOSE ASSY	2M	1
502 40 65-13	HOSE ASSY	3M	1
502 40 65-14	HOSE ASSY	4M	1
502 40 65-15	HOSE ASSY	5M	1
502 40 65-16	HOSE ASSY	6M	1
502 40 70-01	NIPPLE		1
502 40 71-01	WASHER		1
502 40 72-16	HOSE CLAMP		1
502 40 74-02	HOSE NIPPLE		1
502 40 75-01	NIPPLE		1
502 40 78-01	DUST COVER		1
502 40 88-01	WASHER		1
502 40 88-02	WASHER		1
502 40 89-01	O-RING		1
502 40 89-07	O-RING		1
502 40 91-01	DUST COVER		1
502 40 94-81	HOSE CLAMP		1
502 41 91-02	ADJUSTER		1
502 42 18-01	CLUTCH		1
502 42 20-02	PIPE		1
502 42 21-05	PIPE		1
502 42 22-02	PIPE		1
502 42 22-06	PIPE		1
502 42 32-01	PROTECTIVE HOOD		1
502 42 52-03	SLEEVE	DIA. 31/27	1
502 42 53-03	NUT		1
502 42 54-01	LEDKULA		1
502 42 55-03	CIRCLIP		1
502 42 56-03	SLEEVE	DIA. 35/31	1
502 42 57-01	JOINT		1
502 42 59-01	LOCK NUT		1
502 42 80-01	PEN		2
502 42 83-01	BALL JOINT	2-3-4 M	1
502 42 83-03	BALL JOINT	5-6 M	1
502 42 95-01	CLUTCH COVER		1
502 42 98-01	GASKET		1
503 20 02-16	SCREW IHSCFM		1
503 21 06-22	SCREW IHSCFT		4
503 21 06-25	SCREW IHSCFT		2
503 21 06-25	SCREW IHSCFT		2
503 22 00-01	HEXAGON NUT		2
503 22 65-04	SQUARE NUT		1
503 83 17-01	VALVE		1
503 86 38-01	COVER PLATE		1
503 98 62-01	SEALING		1
537 03 92-01	RETAINER		1
537 07 70-01	RIM SPROCKET		1
537 12 15-01	SCREW		2
537 16 49-01	RETAINER		1
725 63 25-55	SCREW IHCSFM		4
729 52 57-75	SCREW CRPANT	5-6 M	2
740 38 27-01	SEALING WASHER		1

M *compl 502 41 00-03

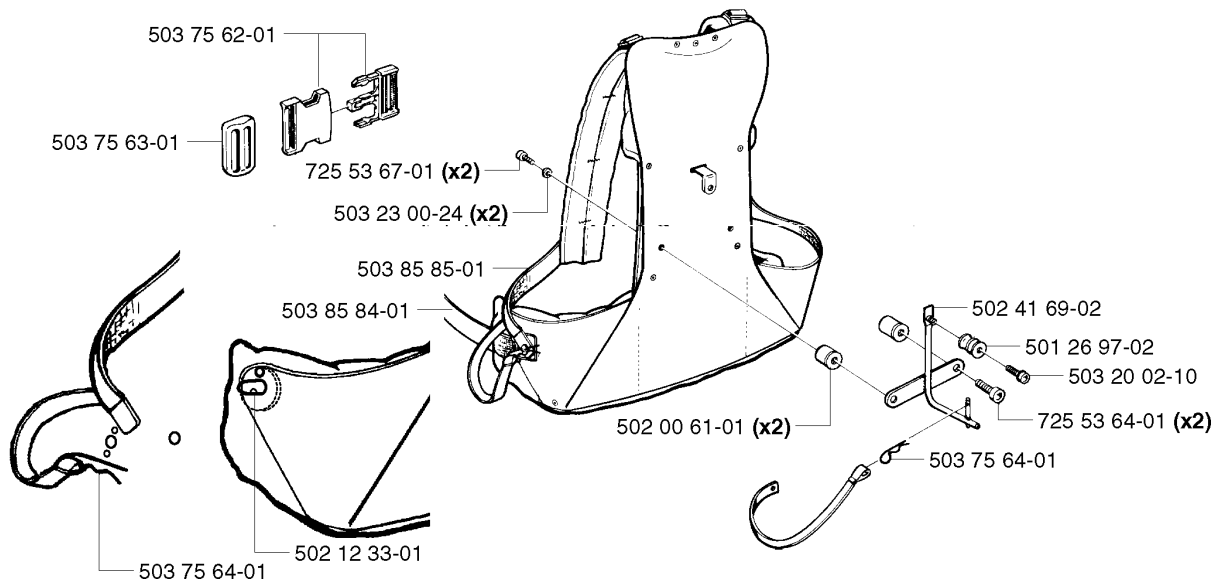


HANDLE & CONTROLS

250PS, 20023500001-Current

Part No	Description	Remark	QTY KIT
502 14 44-01	SPRING		1
502 25 40-01	SCREW SLPANT		1
502 41 00-03	THROTTLE HANDLE ASSY		1
502 41 01-04	HANDLE HALF		1
502 41 02-04	HANDLE HALF		1
502 41 03-02	THROTTLE TRIGGER		1
502 41 04-01	LOCK		1
502 41 05-01	STAPLE		1
502 41 05-01	STAPLE		1
502 41 05-01	STAPLE		1
502 41 05-01	STAPLE		1
502 41 06-01	RECOIL SPRING		1
502 41 48-01	NIPPLE		1
502 42 76-02	THROTTLE CABLE		1
502 42 86-01	THROTTLE WIRE ASSY		1
503 20 02-20	SCREW IHSCFM		1
503 20 02-20	SCREW IHSCFM		1
503 71 82-01	SWITCH		1
729 52 26-71	SCREW CRPANT		3
729 52 26-71	SCREW CRPANT		1
729 52 26-71	SCREW CRPANT		1
729 52 30-71	SCREW CRPANT		1
732 21 14-01	LOCK NUT		1
732 21 14-01	LOCK NUT		1
734 11 36-41	WASHER		1

N compl 502 40 08-02



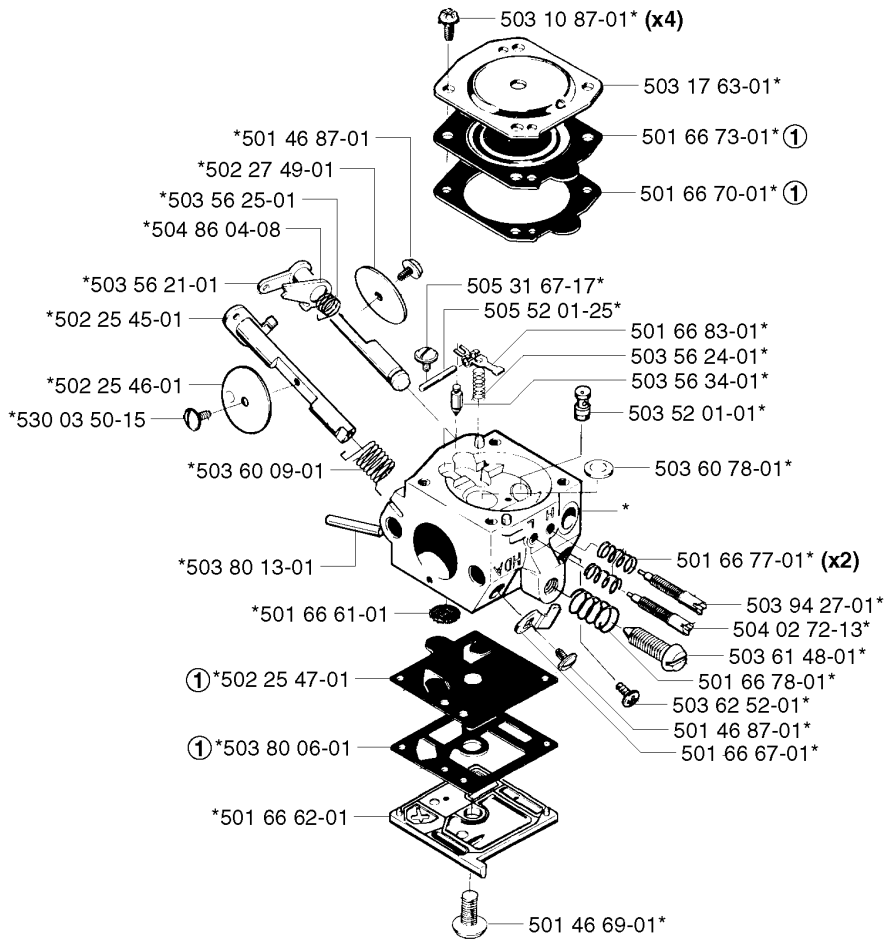
HARNESS

250PS, 20023500001-Current

Part No	Description	Remark	QTY KIT
501 26 97-02	ANTIVIBRATION ELEMENT		1
502 00 61-01	ANTIVIBRATION ELEMENT		2
502 12 33-01	PEN		1
502 40 08-02	HARNESS		1
502 41 69-02	HOOK		1
503 20 02-10	SCREW IHSCFM		1
503 23 00-24	WASHER		2
503 75 62-01	LOCK		1
503 75 63-01	BUCKLE		1
503 75 64-01	HAIR PIN COTTER		1
503 75 64-01	HAIR PIN COTTER		1
503 85 84-01	BELT		1
503 85 85-01	BAND		1
725 53 64-01	SCREW IHSCM		2
725 53 67-01	SCREW		2

P *compl 503 28 16-19

Walbro HDA-142



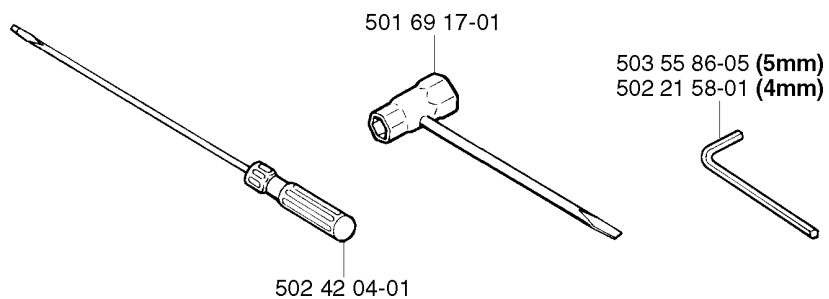
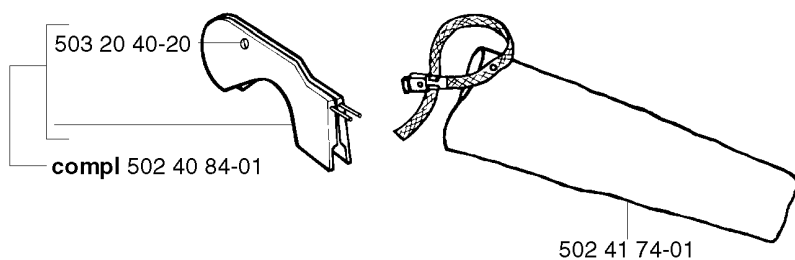
- ① 531 00 45-21
Set of gaskets
Dichtungssatz
Jeu de joints
Juego de juntas
Packningssats

CARBURETOR DETAILS

250PS, 20023500001-Current

Part No	Description	Remark	QTY KIT
501 46 69-01	SCREW		1
501 46 87-01	SCREW		1
501 46 87-01	SCREW		1
501 66 61-01	SCREEN		1
501 66 62-01	COVER		1
501 66 67-01	STOP-THROTTLE		1
501 66 70-01	GASKET	531 00 45-21 SET OF GASKETS	1
501 66 73-01	GASKET KIT	531 00 45-21 SET OF GASKETS	1
501 66 77-01	SPRING		2
501 66 78-01	SPRING		1
501 66 83-01	LEVER		1
502 25 45-01	SHAFT ASS THROTTLE		1
502 25 46-01	VALVE		1
502 25 47-01	DIAPHRAGM PUMP	531 00 45-21 SET OF GASKETS	1
502 27 49-01	CHOKE VALVE		1
503 10 87-01	SCREW		4
503 17 63-01	COVER		1
503 28 16-19	CARBURETTOR		1
503 52 01-01	NOZZLE ASSY		1
503 56 21-01	SHAFT ASSY		1
503 56 24-01	SPRING		1
503 56 25-01	SPRING		1
503 56 34-01	NEEDLE VALVE		1
503 60 09-01	SPRING		1
503 60 78-01	PLUG WELCH		1
503 61 48-01	SCREW		1
503 62 52-01	SCREW ASSY		1
503 80 06-01	GASKET	531 00 45-21 SET OF GASKETS	1
503 80 13-01	FITTING		1
503 94 27-01	NEEDLE		1
504 02 72-13	NEEDLE-IDLE SPEED		1
504 86 04-08	LEVER		1
505 31 67-17	SCREW		1
505 52 01-25	PIN		1
530 03 50-15	SCREW		1

Q Accessories
Zubehöre
Accessoires
Acessorios
Tillbehör

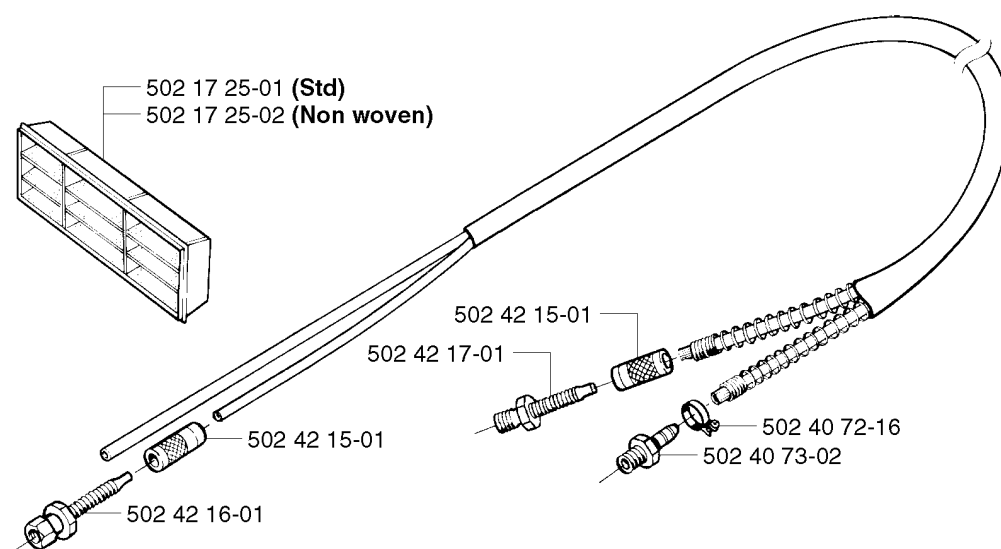


ACCESSORIES

250PS, 20023500001-Current

Part No	Description	Remark	QTY KIT
501 69 17-01	COMBINATION WRENCH		1
502 21 58-01	WRENCH	4MM	1
502 40 84-01	DISTANCE		1
502 41 74-01	BAR COVER		1
502 42 04-01	SCREWDRIVER		1
503 20 40-20	SCREW SLCSFM		1
503 55 86-05	SPANNER	5MM	1

R Delivery as spare part only
Nur als Ersatzteil lieferbar
Livvable seulement comme pièce de rechange
Solo como repuesto
Leveras endast som reservdel



ACCESSORIES

250PS, 20023500001-Current

Part No	Description	Remark	QTY KIT
502 17 25-01	AIR FILTER ASSY	STD	1
502 17 25-02	AIR FILTER ASSY	NON WOVEN	1
502 40 72-16	HOSE CLAMP		1
502 40 73-02	HOSE NIPPLE		1
502 42 15-01	SLEEVE		1
502 42 15-01	SLEEVE		1
502 42 16-01	CLUTCH		1
502 42 17-01	KOPPLING SKRUV		1