

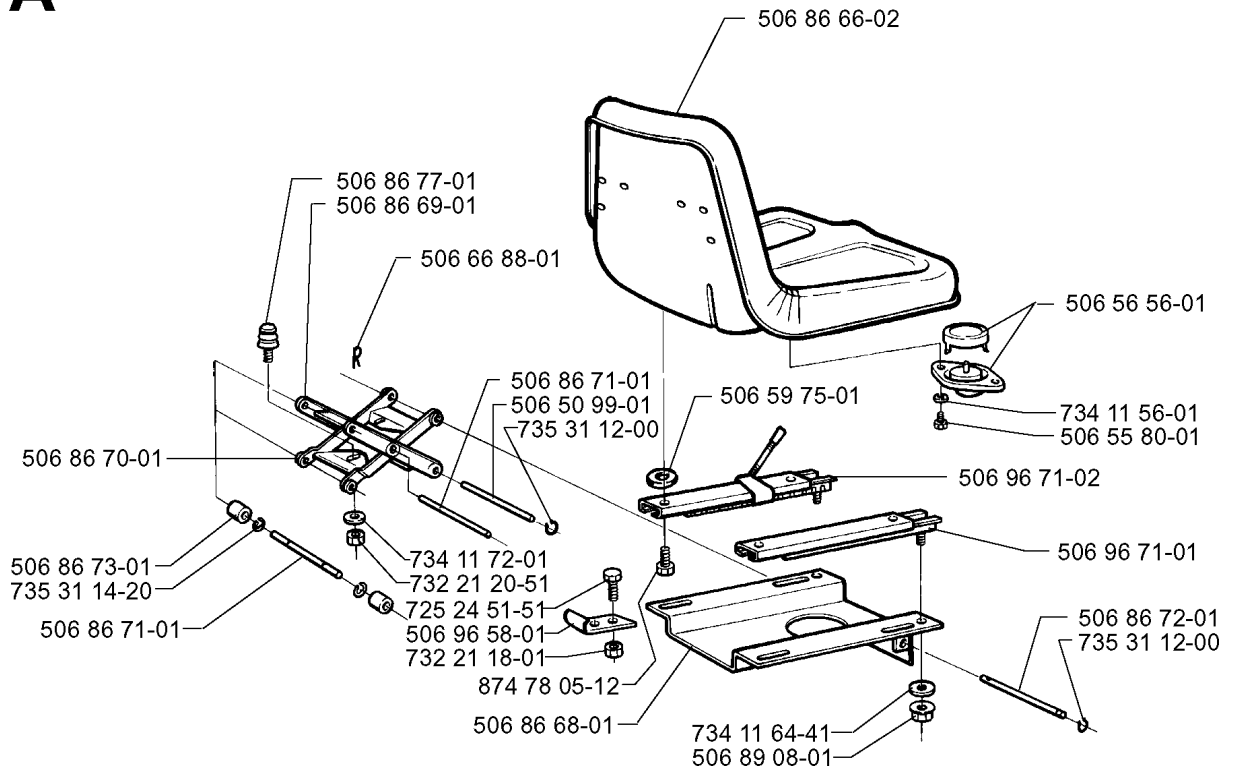


SPARE PARTS LIST

RIDERS

RIDER PRO 14, 2000-02

A



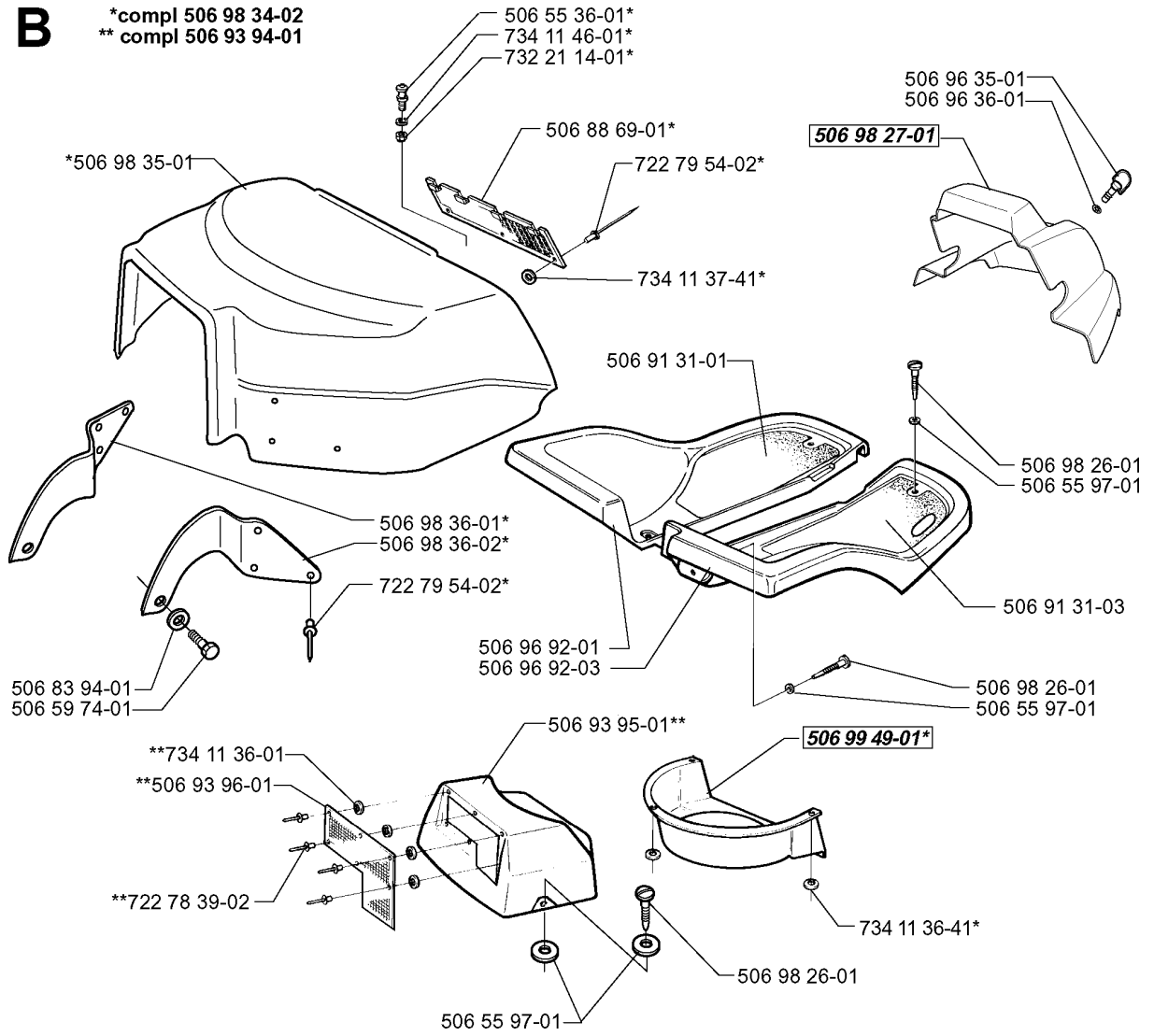
SEAT

RIDER PRO 14, 2000-02

Part No	Description	Remark	QTY KIT
506 50 99-01	SHAFT		1
506 55 80-01	SCREW		1
506 56 56-01	SÄTESBRYTARE KPL		1
506 59 75-01	WASHER		1
506 66 88-01	SPRING COTTER		1
506 86 66-02	SEAT		1
506 86 68-01	SEAT BRACKET ASSY		1
506 86 69-01	YTTERSAX		1
506 86 70-01	INNERSAX		1
506 86 71-01	SHAFT		1
506 86 71-01	SHAFT		1
506 86 72-01	SHAFT		1
506 86 73-01	ROLLER		1
506 86 77-01	SÄTESFJÄDRING		1
506 89 08-01	NUT		1
506 96 58-01	STOP		1
506 96 71-01	GLIDES		1
506 96 71-02	GLIDES MED STOPP		1
725 24 51-51	SCREW		1
732 21 18-01	LOCK NUT		1
732 21 20-51	NUT		1
734 11 56-01	WASHER		1
734 11 64-41	WASHER		1
734 11 72-01	WASHER		1
735 31 12-00	CIRCLIP		1
735 31 12-00	CIRCLIP		1
735 31 14-20	E-CLIP		1
874 78 05-12	SCREW		1

B

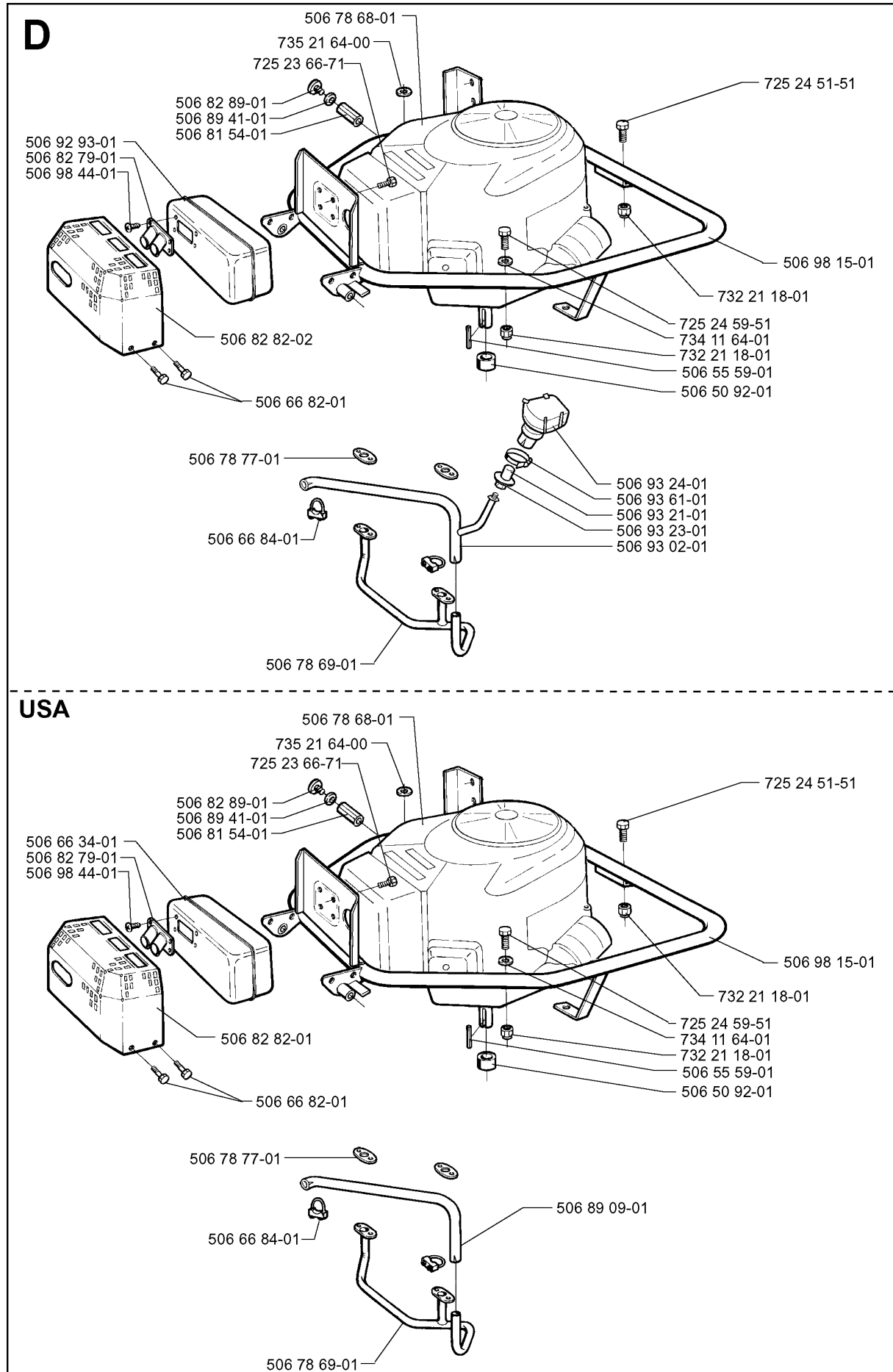
*compl 506 98 34-02
** compl 506 93 94-01



HOOD

RIDER PRO 14, 2000-02

Part No	Description	Remark	QTY KIT
506 55 36-01	KNOB		1
506 55 97-01	WASHER		1
506 55 97-01	WASHER		1
506 55 97-01	WASHER		1
506 59 74-01	SCREW EHHFM		1
506 83 94-01	SPRING WASHER		1
506 88 69-01	GRID		1
506 91 31-01	FOTMATTVA		1
506 91 31-03	FOTMATTVA H.M.SPÅR		1
506 93 94-01	COVER		1
506 93 95-01	COVER		1
506 93 96-01	SCREEN		1
506 96 35-01	VRIDTAPP		1
506 96 36-01	WASHER		1
506 96 92-01	FLYGEL VÄ.		1
506 96 92-03	FLYGEL HÖ. HST		1
506 98 26-01	SCREW		1
506 98 26-01	SCREW		1
506 98 26-01	SCREW		1
506 98 27-01	COVER		1
506 98 34-02	ENGINE HOOD ASSY		1
506 98 35-01	MOTOR COVER		1
506 98 36-01	PIVOT LEFT		1
506 98 36-02	HINGE		1
506 99 49-01	AIR CONDUCTOR		1
722 78 39-02	BLIND RIVET		1
722 79 54-02	RIVET		1
722 79 54-02	RIVET		1
732 21 14-01	LOCK NUT		1
734 11 36-01	WASHER		1
734 11 36-41	WASHER		1
734 11 37-41	WASHER		1
734 11 46-01	WASHER		1

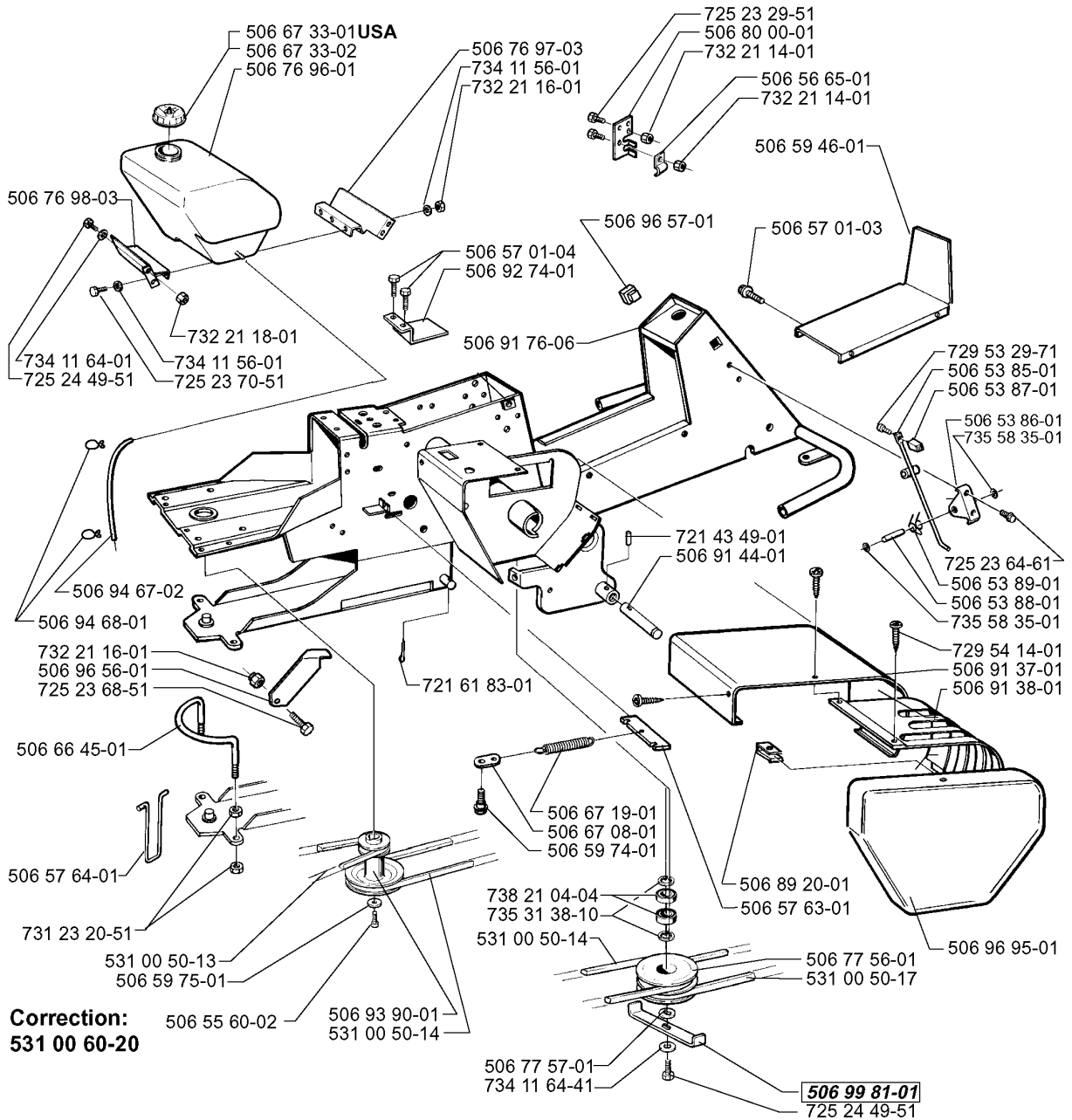


ENGINE

RIDER PRO 14, 2000-02

Part No	Description	Remark	QTY KIT
506 50 92-01	SPACING SLEEVE		1
506 55 59-01	WEDGE		1
506 66 34-01	MUFFLER		1
506 66 82-01	SCREW		1
506 66 84-01	CLAMP ASSY		1
506 78 68-01	MOTOR ASSY		1
506 78 69-01	GRENÖR KPL.		1
506 78 77-01	GASKET		1
506 81 54-01	OLJEAVTAPPNINGSRÖR		1
506 82 79-01	DEFLECTOR		1
506 82 82-01	BURN GUARD ASSY		1
506 82 89-01	PLUG		1
506 89 09-01	EXHAUST PIPE		1
506 89 41-01	WASHER		1
506 98 15-01	ENGINE FRAME		1
506 98 44-01	SCREW		1
725 23 66-71	SCREW EHHM		1
725 24 51-51	SCREW		1
725 24 59-51	SCREW EHHM		1
732 21 18-01	LOCK NUT		1
732 21 18-01	LOCK NUT		1
734 11 64-01	WASHER		1
735 21 64-00	LOCKWASHER		1

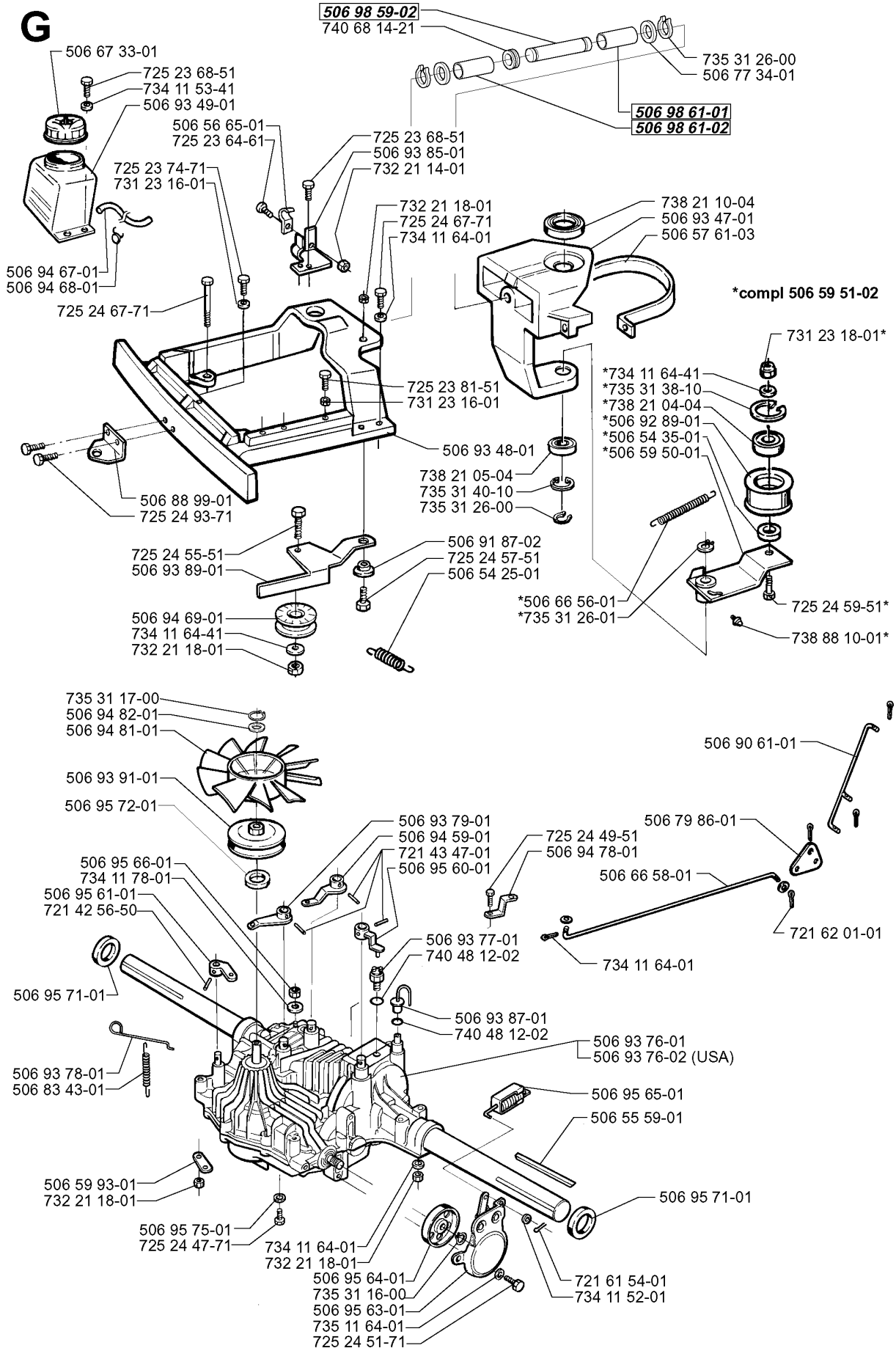
E



CHASSIS / FRAME

RIDER PRO 14, 2000-02

Part No	Description	Remark	QTY KIT
506 53 85-01	LOCKING ARM		1
506 53 86-01	BRACKET		1
506 53 87-01	CONTROL BUTTON		1
506 53 88-01	SHAFT		1
506 53 89-01	SPRING		1
506 55 60-02	SCREW UNC		1
506 56 65-01	CLIP		1
506 57 01-03	SCREW EHHFM		1
506 57 01-04	SCREW EHHFM		1
506 57 63-01	SPRING RETAINER		1
506 57 64-01	CABLE HOLDER		1
506 59 46-01	LOCK GOLVTUNNEL		1
506 59 74-01	SCREW EHHFM		1
506 59 75-01	WASHER		1
506 66 45-01	BELT GUIDE		1
506 67 08-01	LINK		1
506 67 19-01	SPRING		1
506 67 33-01	TANK CAP ASSY	USA	1
506 67 33-02	TANK CAP ASSY		1
506 76 96-01	FUEL TANK		1
506 76 97-03	BRACKET		1
506 76 98-03	BRACKET		1
506 77 56-01	MELLANHJUL		1
506 77 57-01	WASHER		1
506 80 00-01	BRACKET		1
506 89 20-01	SPEED NUT		1
506 91 37-01	COVER PLATE		1
506 91 38-01	CONTROL PLATE		1
506 91 44-01	WHEEL AXLE		1
506 91 76-06	FRAME		1
506 92 74-01	SUPPORT SHEET		1
506 93 90-01	PULLEY		1
506 94 67-02	FUEL HOSE		1
506 94 68-01	TRÅDKLÄMMA		1
506 96 56-01	PROTECTIVE PLATE		1
506 96 57-01	PLUG		1
506 96 95-01	CONTROL CAP		1
506 99 81-01	BELT GUIDE		1
531 00 50-14	BELT		1
531 00 50-14	BELT		1
531 00 50-17	BELT		1
531 00 60-20	BELT	CORRECTION:	1
721 43 49-01	SPRING PIN		1
721 61 83-01	SPLIT PIN		1
725 23 29-51	SCREW		1
725 23 64-61	SCREW EHHFT		1
725 23 68-51	SCREW		1
725 23 70-51	SCREW		1
725 24 49-51	SCREW		1
725 24 49-51	SCREW		1
729 53 29-71	SCREW CRPANT		1
729 54 14-01	SCREW CRPANT		1
731 23 20-51	HEXAGON NUT		1
732 21 14-01	LOCK NUT		1
732 21 14-01	LOCK NUT		1
732 21 16-01	LOCK NUT		1
732 21 16-01	LOCK NUT		1
732 21 18-01	LOCK NUT		1
734 11 56-01	WASHER		1
734 11 56-01	WASHER		1
734 11 64-01	WASHER		1
734 11 64-41	WASHER		1
735 31 38-10	CIRCLIP		1
735 58 35-01	WASHER		1
735 58 35-01	WASHER		1
738 21 04-04	BALL BEARING		1



TRANSMISSION

RIDER PRO 14, 2000-02

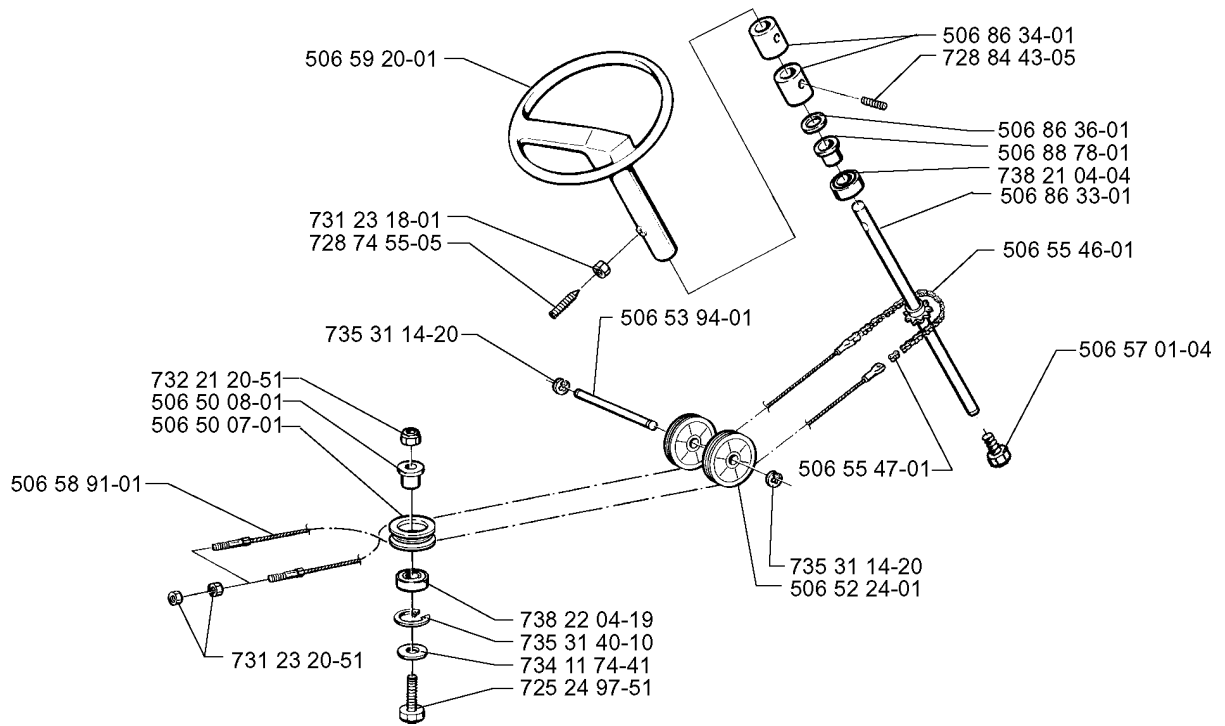
Part No	Description	Remark	QTY KIT
506 54 25-01	SPRING		1
506 54 35-01	BUSHING		1
506 55 59-01	WEDGE		1
506 56 65-01	CLIP		1
506 57 61-03	STYRKANS		1
506 59 50-01	LEVER		1
506 59 51-02	REMSP. KNIVDRIVNING		1
506 59 93-01	LINK		1
506 66 56-01	SPRING		1
506 66 58-01	CLUTCH ROD REAR		1
506 67 33-01	TANK CAP ASSY		1
506 77 34-01	WASHER		1
506 79 86-01	LÄNK KOPPLING KPL.		1
506 83 43-01	SPRING		1
506 88 99-01	HITCH		1
506 90 61-01	CONNECTION ROD		1
506 91 87-02	WASHER		1
506 92 89-01	PULLEY		1
506 93 47-01	SPINDLE		1
506 93 48-01	HYDROSTATKONSOL K61		1
506 93 49-01	HYDROSTATTANK		1
506 93 76-01	TRANSMISSION		1
506 93 76-02	TRANSMISSION	USA	1
506 93 77-01	BROMSBRYTARE		1
506 93 78-01	FRIKOPPLINGSSTÅNG		1
506 93 79-01	CONTROL LEVER		1
506 93 85-01	BRACKET		1
506 93 87-01	HOSE COUPLING		1
506 93 89-01	LEVER		1
506 93 91-01	PULLEY		1
506 94 59-01	BRAKE BAND ASSY		1
506 94 67-01	FUEL HOSE		1
506 94 68-01	TRÅDKLÄMMA		1
506 94 69-01	PULLEY		1
506 94 78-01	RETAINER		1
506 94 81-01	FAN		1
506 94 82-01	WASHER		1
506 95 60-01	LEVER		1
506 95 61-01	LEVER		1
506 95 63-01	BRAKE ASSY		1
506 95 64-01	BRAKE DRUM		1
506 95 65-01	SPRING		1
506 95 66-01	NUT		1
506 95 71-01	SEALING		1
506 95 71-01	SEALING		1
506 95 72-01	SEALING		1
506 95 75-01	WASHER		1
506 98 59-02	SHAFT		1
506 98 61-01	GLIDLÄGER		1
506 98 61-02	GLIDLÄGER		1
721 42 56-50	SPRING PIN		1
721 43 47-01	SPRING PIN		1
721 61 54-01	SPLIT PIN		1
721 62 01-01	SPLIT PIN		1
725 23 64-61	SCREW EHHFT		1
725 23 68-51	SCREW		1
725 23 68-51	SCREW		1
725 23 74-71	SCREW EHHM		1
725 23 81-51	SCREW EHHM		1
725 24 47-71	SCREW EHHM		1
725 24 49-51	SCREW		1
725 24 51-71	SCREW EHHM		1
725 24 55-51	SCREW		1
725 24 57-51	SCREW		1

TRANSMISSION

RIDER PRO 14, 2000-02

Part No	Description	Remark	QTY KIT
725 24 59-51	SCREW EHHM		1
725 24 67-71	SCREW EHHM		1
725 24 67-71	SCREW EHHM		1
725 24 93-71	SCREW EHHM		1
731 23 16-01	HEXAGON NUT		1
731 23 16-01	HEXAGON NUT		1
731 23 18-01	HEXAGON NUT		1
732 21 14-01	LOCK NUT		1
732 21 18-01	LOCK NUT		1
732 21 18-01	LOCK NUT		1
732 21 18-01	LOCK NUT		1
732 21 18-01	LOCK NUT		1
734 11 52-01	WASHER		1
734 11 53-41	WASHER		1
734 11 64-01	WASHER		1
734 11 64-01	WASHER		1
734 11 64-01	WASHER		1
734 11 64-41	WASHER		1
734 11 64-41	WASHER		1
734 11 78-01	WASHER		1
735 11 64-01	SPRING WASHER		1
735 31 16-00	CIRCLIP		1
735 31 17-00	CIRCLIP		1
735 31 26-00	CIRCLIP		1
735 31 26-00	CIRCLIP		1
735 31 26-01	CIRCLIP		1
735 31 38-10	CIRCLIP		1
735 31 40-10	CIRCLIP		1
738 21 04-04	BALL BEARING		1
738 21 05-04	BALL BEARING		1
738 21 10-04	BALL BEARING		1
738 88 10-01	LUBRICATION NIPPLE		1
740 48 12-02	O-RING		1
740 48 12-02	O-RING		1
740 68 14-21	V-RING		1

F

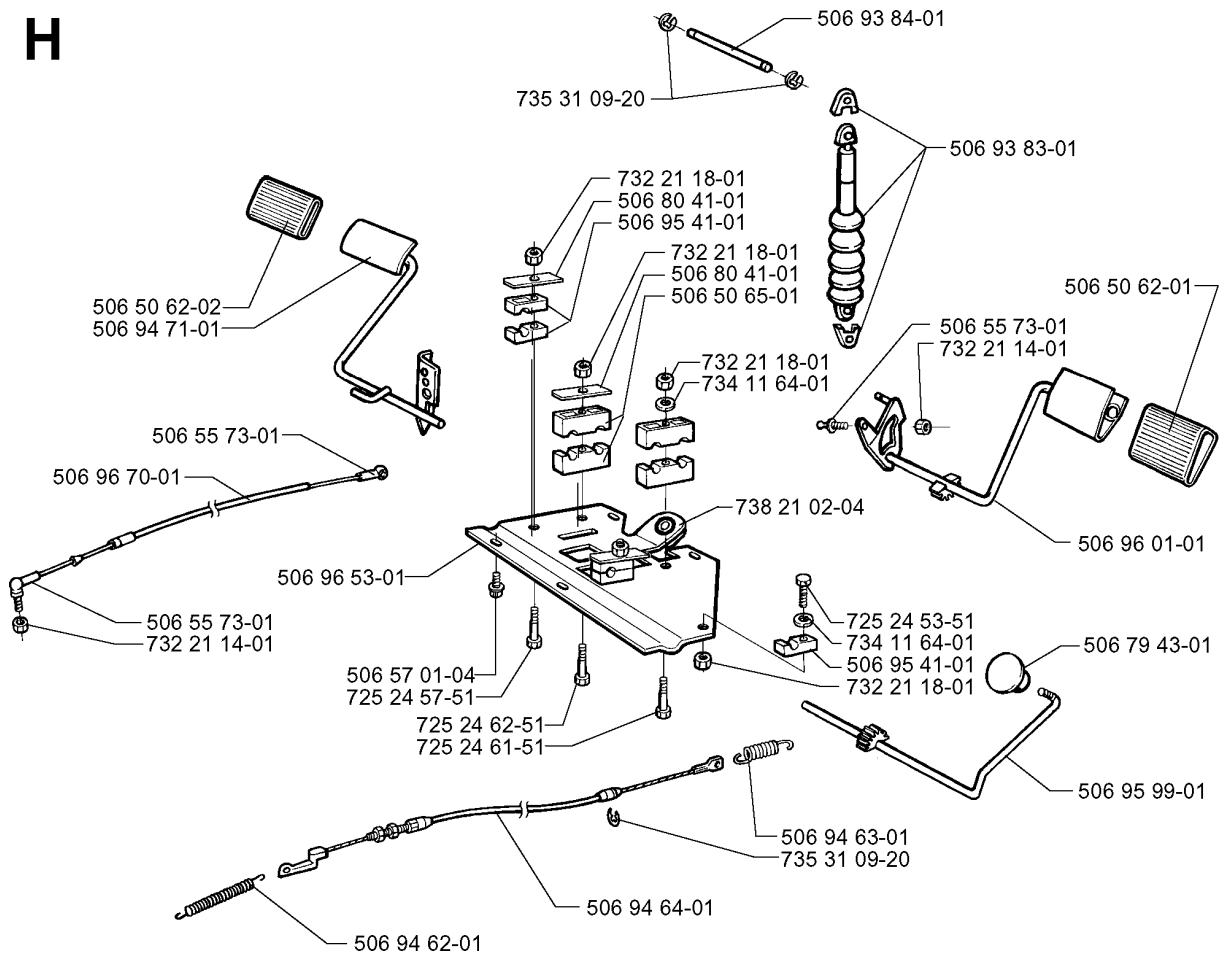


STEERING

RIDER PRO 14, 2000-02

Part No	Description	Remark	QTY KIT
506 50 07-01	BARRING WHEEL		1
506 50 08-01	BUSHING		1
506 52 24-01	STARTER PULLEY		1
506 53 94-01	SHAFT		1
506 55 46-01	CHAIN		1
506 55 47-01	LINKAGE		1
506 57 01-04	SCREW EHHFM		1
506 58 91-01	WIRE ASSY		1
506 59 20-01	STEERING WHEEL		1
506 86 33-01	ROD STEERING ASSY		1
506 86 34-01	DRIVER		1
506 86 36-01	WASHER		1
506 88 78-01	SPACER		1
725 24 97-51	SCREW		1
728 74 55-05	SCREW IHSETM		1
728 84 43-05	SCREW IHSETM		1
731 23 18-01	HEXAGON NUT		1
731 23 20-51	HEXAGON NUT		1
732 21 20-51	NUT		1
734 11 74-41	WASHER		1
735 31 14-20	E-CLIP		1
735 31 14-20	E-CLIP		1
735 31 40-10	CIRCLIP		1
738 21 04-04	BALL BEARING		1
738 22 04-19	BALL BEARING		1

H

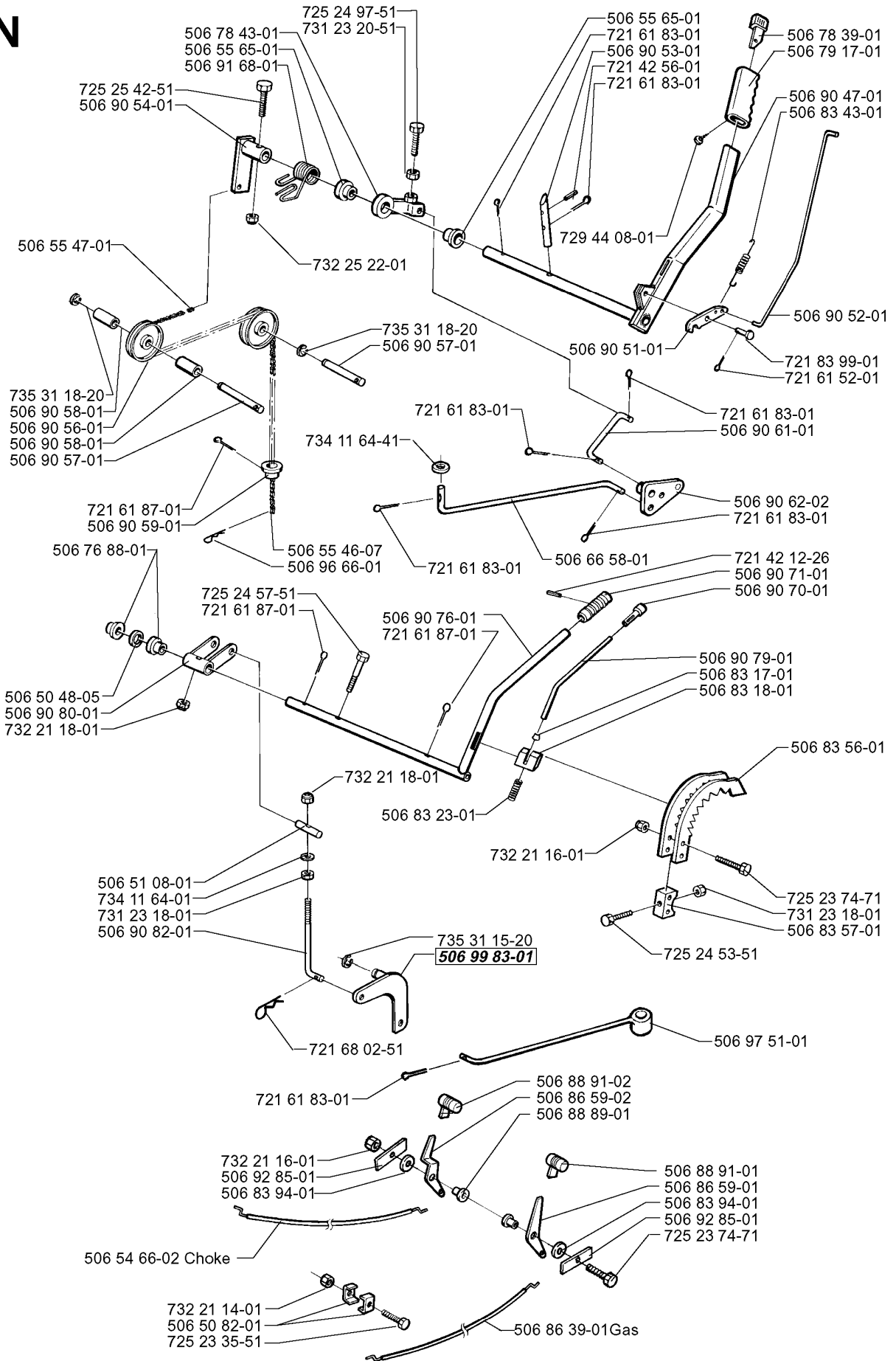


PEDALS

RIDER PRO 14, 2000-02

Part No	Description	Remark	QTY KIT
506 50 62-01	PEDAL RUBBER		1
506 50 62-02	PEDAL RUBBER		1
506 50 65-01	BEARING SUPPORT		1
506 55 73-01	VINKELL.AS8 DIN71802		1
506 55 73-01	VINKELL.AS8 DIN71802		1
506 55 73-01	VINKELL.AS8 DIN71802		1
506 57 01-04	SCREW EHHFM		1
506 79 43-01	KNOB		1
506 80 41-01	PLATE		1
506 80 41-01	PLATE		1
506 93 83-01	DAMPING PIECE		1
506 93 84-01	SHAFT		1
506 94 62-01	BRAKE SPRING		1
506 94 63-01	BRAKE SPRING		1
506 94 64-01	BROMSWIRE KPL.		1
506 94 71-01	BRAKE PEDAL ASSY		1
506 95 41-01	BEARING SUPPORT		1
506 95 41-01	BEARING SUPPORT		1
506 95 99-01	REVERSE PEDAL		1
506 96 01-01	HYDROSTATIC PEDAL ASSY		1
506 96 53-01	PEDAL PLATE		1
506 96 70-01	HYDROSTATIC CABLE		1
725 24 53-51	SCREW EHHM		1
725 24 57-51	SCREW		1
725 24 61-51	SCREW EHHM		1
725 24 62-51	SCREW EHHM		1
732 21 14-01	LOCK NUT		1
732 21 14-01	LOCK NUT		1
732 21 18-01	LOCK NUT		1
732 21 18-01	LOCK NUT		1
732 21 18-01	LOCK NUT		1
732 21 18-01	LOCK NUT		1
734 11 64-01	WASHER		1
734 11 64-01	WASHER		1
735 31 09-20	E-CLIP		1
735 31 09-20	E-CLIP		1
738 21 02-04	BALL BEARING		1

N



CONTROLS

RIDER PRO 14, 2000-02

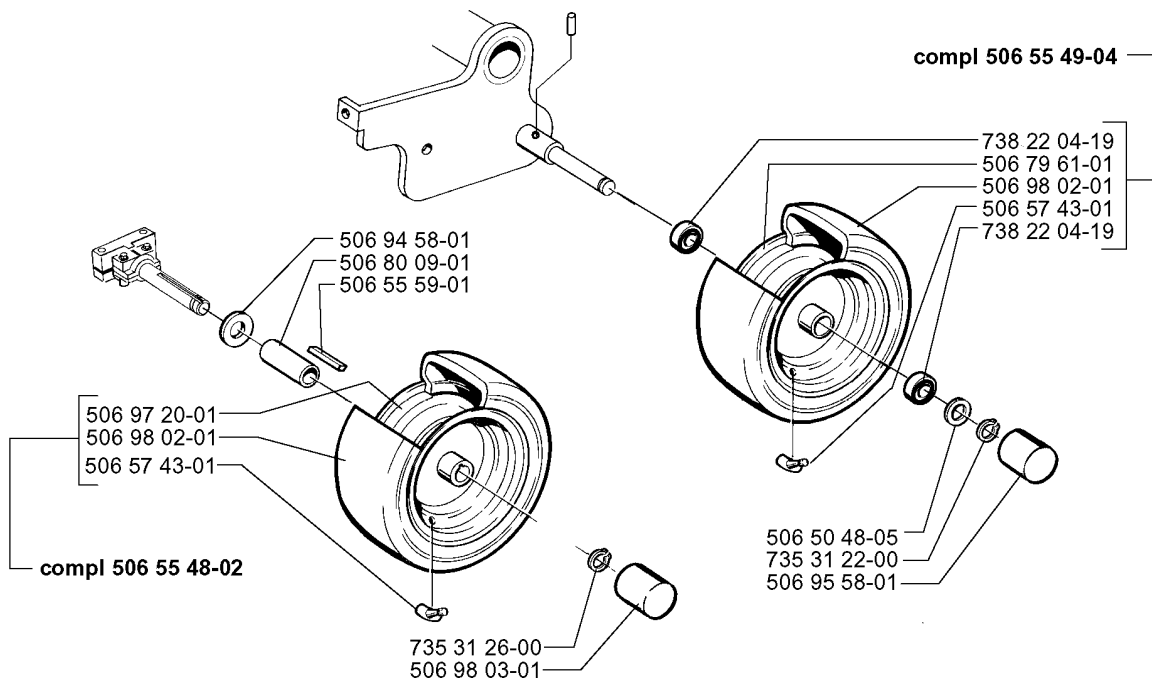
Part No	Description	Remark	QTY KIT
506 50 48-05	WASHER		1
506 50 82-01	CLIP		1
506 51 08-01	NIPPLE		1
506 54 66-02	THROTTLE CABLE ASSY	CHOKE	1
506 55 46-07	CHAIN		1
506 55 47-01	LINKAGE		1
506 55 65-01	BEARING		1
506 55 65-01	BEARING		1
506 66 58-01	CLUTCH ROD REAR		1
506 76 88-01	BUSHING		1
506 78 39-01	BUTTON		1
506 78 43-01	LINK ASSY		1
506 79 17-01	HANDLE		1
506 83 17-01	END FITTING		1
506 83 18-01	LOCK		1
506 83 23-01	SPRING		1
506 83 43-01	SPRING		1
506 83 56-01	HÖJDSEGMENT		1
506 83 57-01	BRACKET		1
506 83 94-01	SPRING WASHER		1
506 83 94-01	SPRING WASHER		1
506 86 39-01	THROTTLE CABLE ASSY	GAS	1
506 86 59-01	CONTROL		1
506 86 59-02	CONTROL		1
506 88 89-01	BUSHING		1
506 88 91-01	KNOB		1
506 88 91-02	KNOB		1
506 90 47-01	LIFT LEVER CMPL		1
506 90 51-01	CATCH		1
506 90 52-01	PUSH ROD		1
506 90 53-01	PEN		1
506 90 54-01	LIFTING ARM		1
506 90 56-01	OFFSET PULLEY		1
506 90 57-01	SHAFT		1
506 90 57-01	SHAFT		1
506 90 58-01	TUBE SLEEVE		1
506 90 58-01	TUBE SLEEVE		1
506 90 59-01	CHAIN STOP		1
506 90 61-01	CONNECTION ROD		1
506 90 62-02	LINK ASSY		1
506 90 70-01	KNOB		1
506 90 71-01	HANDLE		1
506 90 76-01	LIFTING LEVER ASSY		1
506 90 79-01	PUSH ROD		1
506 90 80-01	LEVER		1
506 90 82-01	HEIGHT ROD		1
506 91 68-01	SPRING		1
506 92 85-01	LOCKWASHER		1
506 92 85-01	LOCKWASHER		1
506 96 66-01	HAIR PIN COTTER		1
506 97 51-01	CONNECTOR		1
506 99 83-01	LINK ASSY		1
721 42 12-26	SPRING PIN		1
721 42 56-01	SPRING PIN		1
721 61 52-01	SPLIT PIN		1
721 61 83-01	SPLIT PIN		1
721 61 83-01	SPLIT PIN		1
721 61 83-01	SPLIT PIN		1
721 61 83-01	SPLIT PIN		1
721 61 83-01	SPLIT PIN		1
721 61 83-01	SPLIT PIN		1
721 61 83-01	SPLIT PIN		1
721 61 87-01	SPLIT PIN		1
721 61 87-01	SPLIT PIN		1

CONTROLS

RIDER PRO 14, 2000-02

Part No	Description	Remark	QTY KIT
721 61 87-01	SPLIT PIN		1
721 68 02-51	SPRING COTTER		1
721 83 99-01	CLEVIS PIN		1
725 23 35-51	SCREW EHHM		1
725 23 74-71	SCREW EHHM		1
725 23 74-71	SCREW EHHM		1
725 24 53-51	SCREW EHHM		1
725 24 57-51	SCREW		1
725 24 97-51	SCREW		1
725 25 42-51	SCREW EHHM		1
729 44 08-01	SCREW SLCSRT		1
731 23 18-01	HEXAGON NUT		1
731 23 18-01	HEXAGON NUT		1
731 23 20-51	HEXAGON NUT		1
732 21 14-01	LOCK NUT		1
732 21 16-01	LOCK NUT		1
732 21 16-01	LOCK NUT		1
732 21 18-01	LOCK NUT		1
732 21 18-01	LOCK NUT		1
732 25 22-01	HEXAGON LOCKING NUT		1
734 11 64-01	WASHER		1
734 11 64-41	WASHER		1
735 31 15-20	E-CLIP		1
735 31 18-20	E-CLIP		1
735 31 18-20	E-CLIP		1

L



WHEELS & TIRES

RIDER PRO 14, 2000-02

Part No	Description	Remark	QTY KIT
506 50 48-05	WASHER		1
506 55 48-02	REAR WHEEL		1
506 55 49-04	WHEEL		1
506 55 59-01	WEDGE		1
506 57 43-01	VALVE ASSY		1
506 57 43-01	VALVE ASSY		1
506 79 61-01	RIM		1
506 80 09-01	SLEEVE		1
506 94 58-01	WASHER		1
506 95 58-01	CUP		1
506 97 20-01	RIM		1
506 98 02-01	TIRE		1
506 98 02-01	TIRE		1
506 98 03-01	CUP		1
735 31 22-00	CIRCLIP		1
735 31 26-00	CIRCLIP		1
738 22 04-19	BALL BEARING		1
738 22 04-19	BALL BEARING		1

M

506 99 96-01



USA

Side discharge

506 81 80-01
506 88 18-01

CPSC

506 67 62-01

Start/Warning

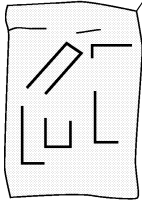
506 94 92-01

Standard decal

506 88 07-02

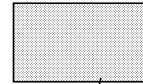
Decal kit

531 00 65-78



506 94 27-01

506 94 30-01
Husqvarna



Warning
506 94 48-01

506 98 37-01



506 98 37-02

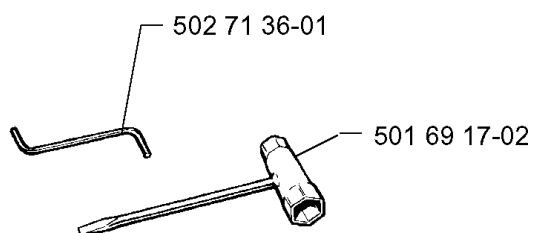


DECALS

RIDER PRO 14, 2000-02

Part No	Description	Remark	QTY KIT
506 67 62-01	LABEL WARNING	CPSC	1
506 81 80-01	LABEL	SIDE DISCHARGE	1
506 88 07-02	DECAL	STANDARD DECAL	1
506 88 18-01	LABEL	SIDE DISCHARGE	1
506 94 27-01	DECAL		1
506 94 30-01	DECAL		1
506 94 48-01	LABEL	WARNING	1
506 94 92-01	DECAL	START/WARNING	1
506 98 37-01	STRIPES MOTORKÁPA V		1
506 98 37-02	STRIPES MOTORKÁPA H		1
506 99 96-01	LABEL		1
531 00 65-78	DECAL	DECAL KIT	1

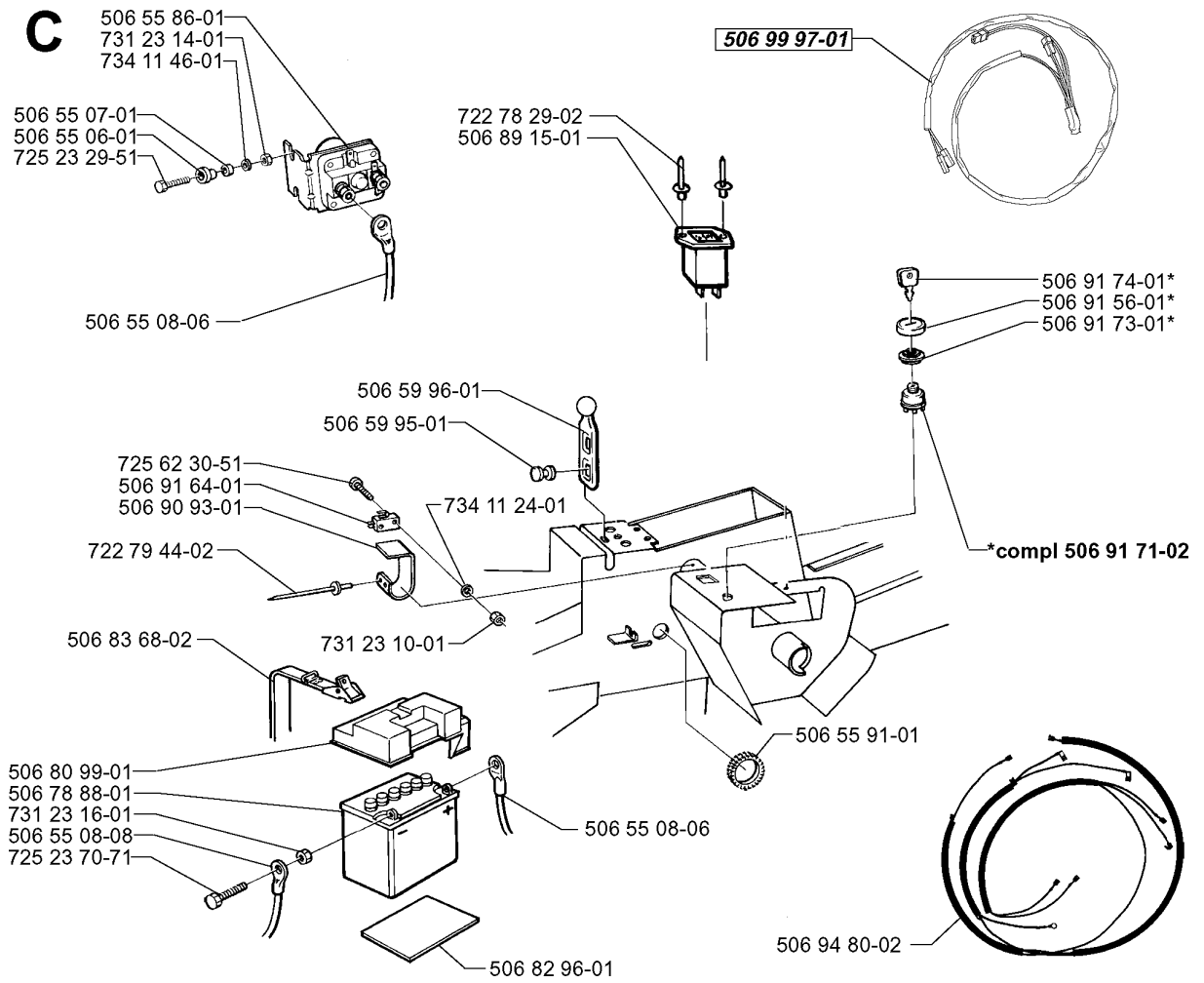
P Leverans endast som reservdel
Delivery as spare part only
Nur als Ersatzteil lieferbar
Livrabable seulement comme pièce de rechange
Solo como repuesto
Zasilà se jenom jako náhradní díl



ACCESSORIES

RIDER PRO 14, 2000-02

Part No	Description	Remark	QTY KIT
501 69 17-02	COMBINATION WRENCH		1
502 71 36-01	SPANNER		1



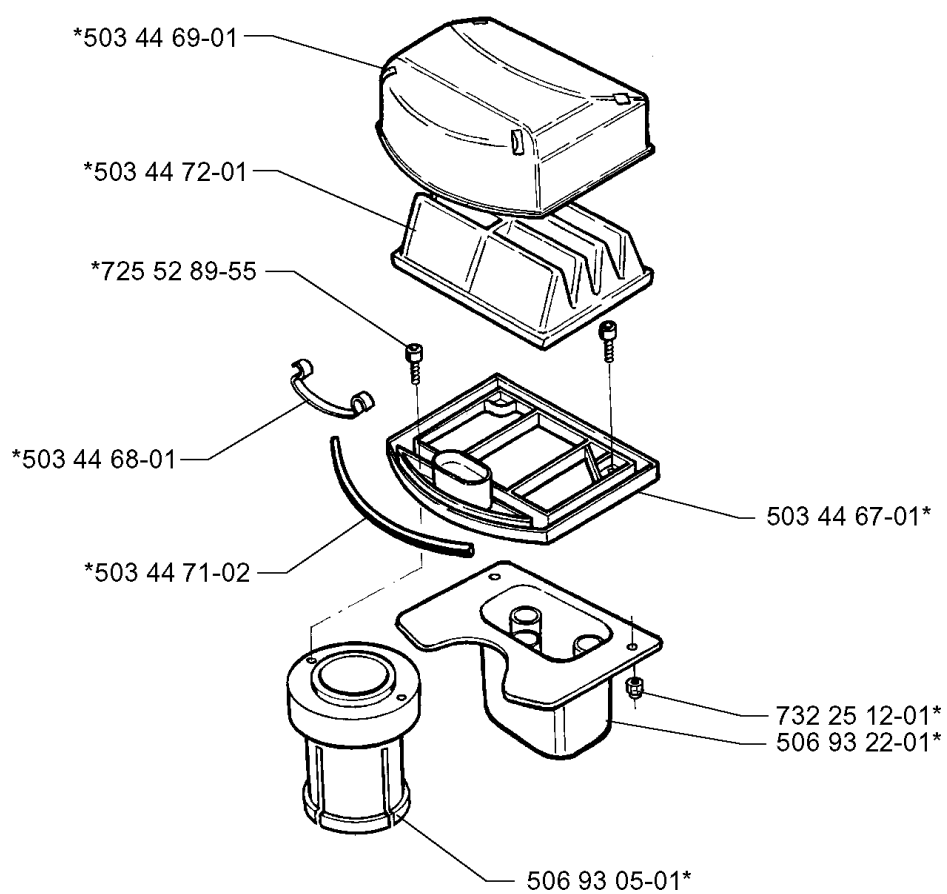
ELECTRICAL

RIDER PRO 14, 2000-02

Part No	Description	Remark	QTY KIT
506 55 06-01	PLUG		1
506 55 07-01	INSULATING WASHER		1
506 55 08-06	STARTKABEL BATT-RELÄ		1
506 55 08-06	STARTKABEL BATT-RELÄ		1
506 55 08-08	STARTKABEL BATT-MOTO		1
506 55 86-01	RELAY		1
506 55 91-01	SKAVSKYDD		1
506 59 95-01	BUTTON		1
506 59 96-01	GUMMISTROPP		1
506 78 88-01	BATTERY		1
506 80 99-01	BATTERY COVER		1
506 82 96-01	BATTERY MAT		1
506 83 68-02	BELT		1
506 89 15-01	HOUR METER		1
506 90 93-01	PLATE SPRING		1
506 91 56-01	PROTECTION		1
506 91 64-01	MICRO SWITCH		1
506 91 71-02	IGNITION LOCK		1
506 91 73-01	NUT		1
506 91 74-01	KEY		1
506 94 80-02	WIRING		1
506 99 97-01	WIRING		1
722 78 29-02	BLIND RIVET		1
722 79 44-02	RIVET		1
725 23 29-51	SCREW		1
725 23 70-71	SCREW EHHM		1
725 62 30-51	SCREW IHCSFM		1
731 23 10-01	HEXAGON NUT		1
731 23 14-01	HEXAGON NUT		1
731 23 16-01	HEXAGON NUT		1
734 11 24-01	WASHER		1
734 11 46-01	WASHER		1

R

*compl 506 93 24-01

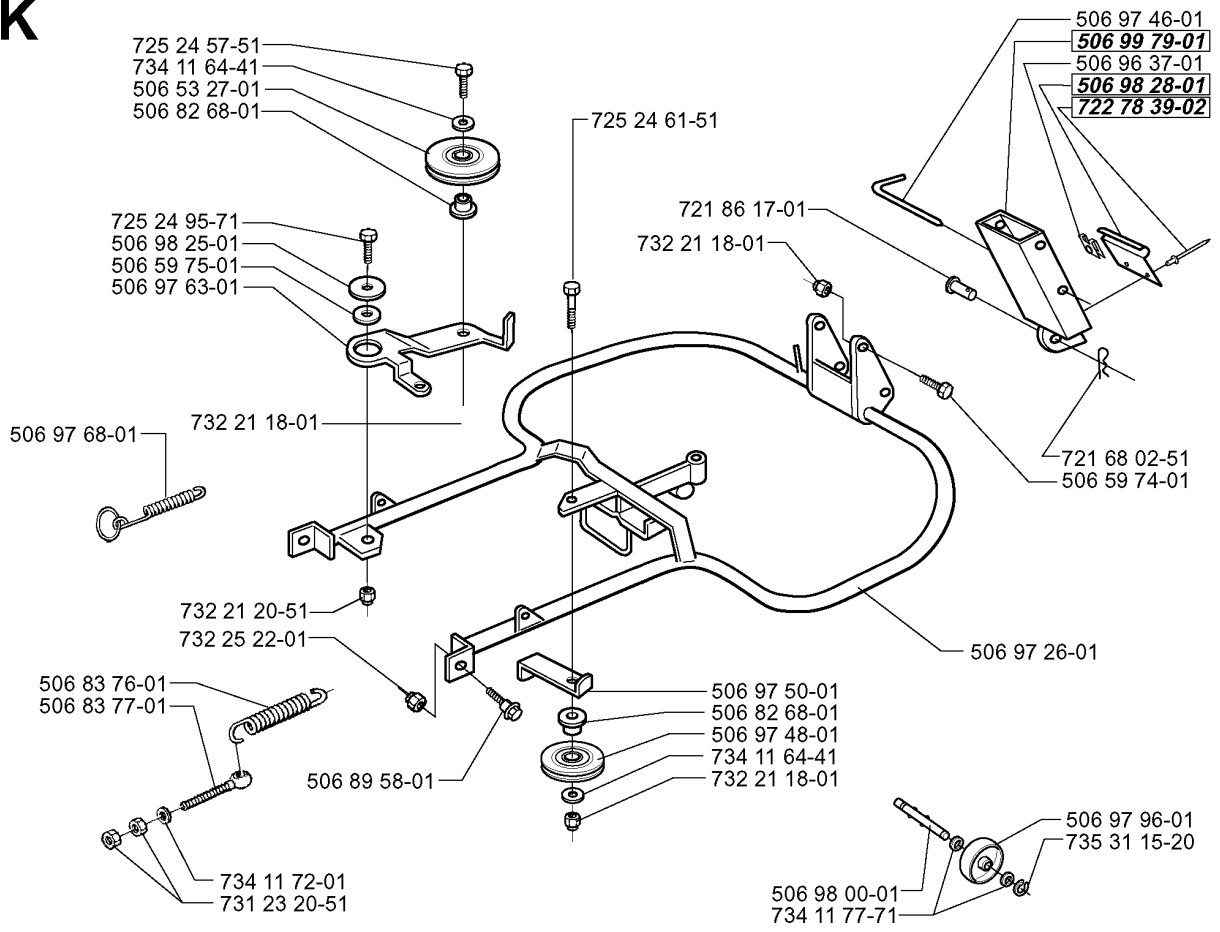


AIR FILTER

RIDER PRO 14, 2000-02

Part No	Description	Remark	QTY KIT
503 44 67-01	FILTER HOLDER		1
503 44 68-01	SPRING		1
503 44 69-01	FILTER HOLDER		1
503 44 71-02	GASKET		1
503 44 72-01	AIR FILTER		1
506 93 05-01	CONNECTION		1
506 93 22-01	MUFFLER		1
506 93 24-01	FILTER		1
725 52 89-55	SCREW IHSCM		1
732 25 12-01	HEXAGON LOCKING NUT		1

K

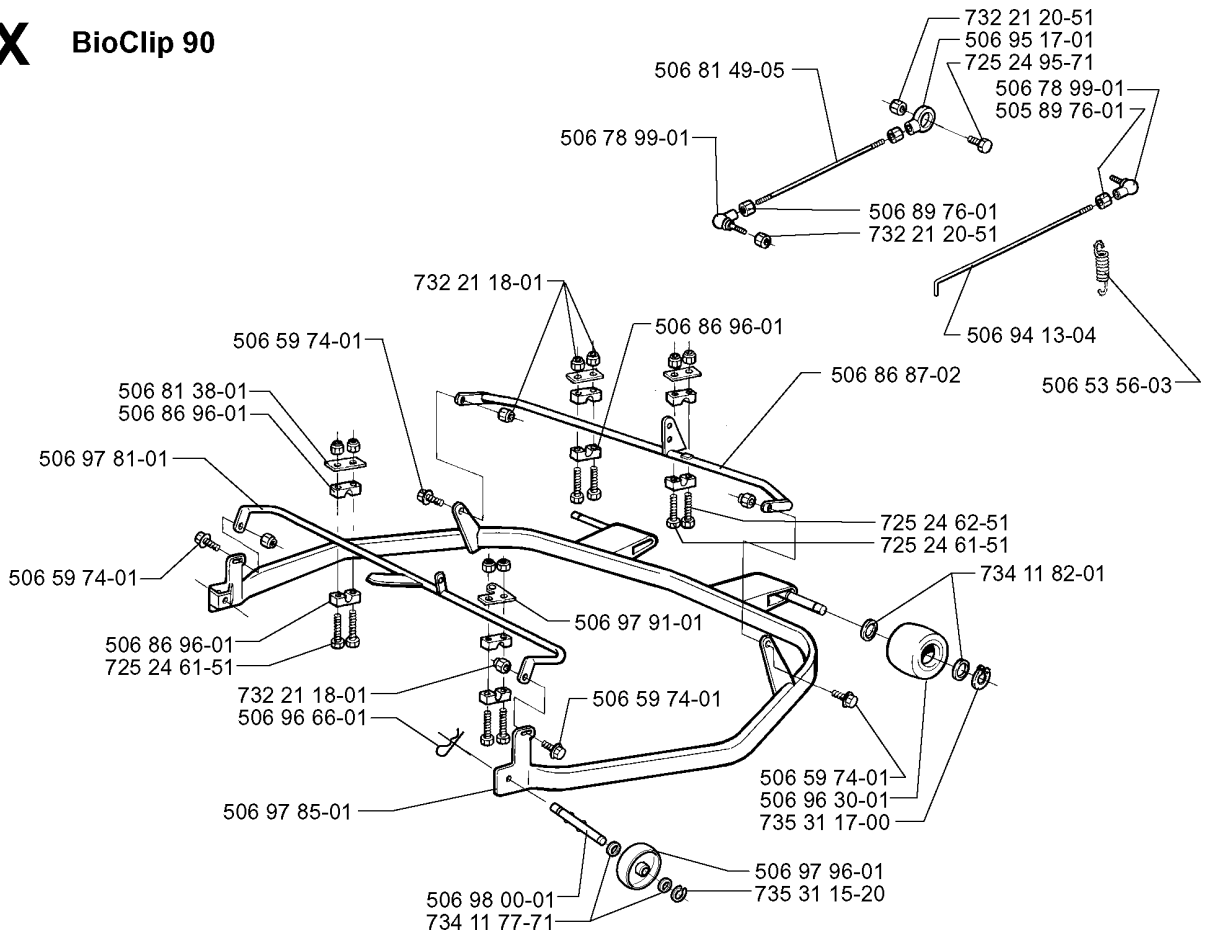


FRAME

RIDER PRO 14, 2000-02

Part No	Description	Remark	QTY KIT
506 53 27-01	PULLEY		1
506 59 74-01	SCREW EHHFM		1
506 59 75-01	WASHER		1
506 82 68-01	BUSHING		1
506 82 68-01	BUSHING		1
506 83 76-01	SPRING		1
506 83 77-01	RING BOLT		1
506 89 58-01	COLLAR SCREW		1
506 96 37-01	LÅSDON		1
506 97 26-01	DECK ATTACHMENT ASSY		1
506 97 46-01	PEN		1
506 97 48-01	PULLEY		1
506 97 50-01	BELT GUIDE		1
506 97 63-01	SPÄNNARM		1
506 97 68-01	SPRING		1
506 97 96-01	WHEEL		1
506 98 00-01	SHAFT		1
506 98 25-01	WASHER		1
506 98 28-01	BRACKET		1
506 99 79-01	LINK ASSY		1
721 68 02-51	SPRING COTTER		1
721 86 17-01	CLEVIS PIN		1
722 78 39-02	BLIND RIVET		1
725 24 57-51	SCREW		1
725 24 61-51	SCREW EHHM		1
725 24 95-71	SCREW EHHM		1
731 23 20-51	HEXAGON NUT		1
732 21 18-01	LOCK NUT		1
732 21 18-01	LOCK NUT		1
732 21 18-01	LOCK NUT		1
732 21 20-51	NUT		1
732 25 22-01	HEXAGON LOCKING NUT		1
734 11 64-41	WASHER		1
734 11 64-41	WASHER		1
734 11 72-01	WASHER		1
734 11 77-71	WASHER		1
735 31 15-20	E-CLIP		1

X BioClip 90

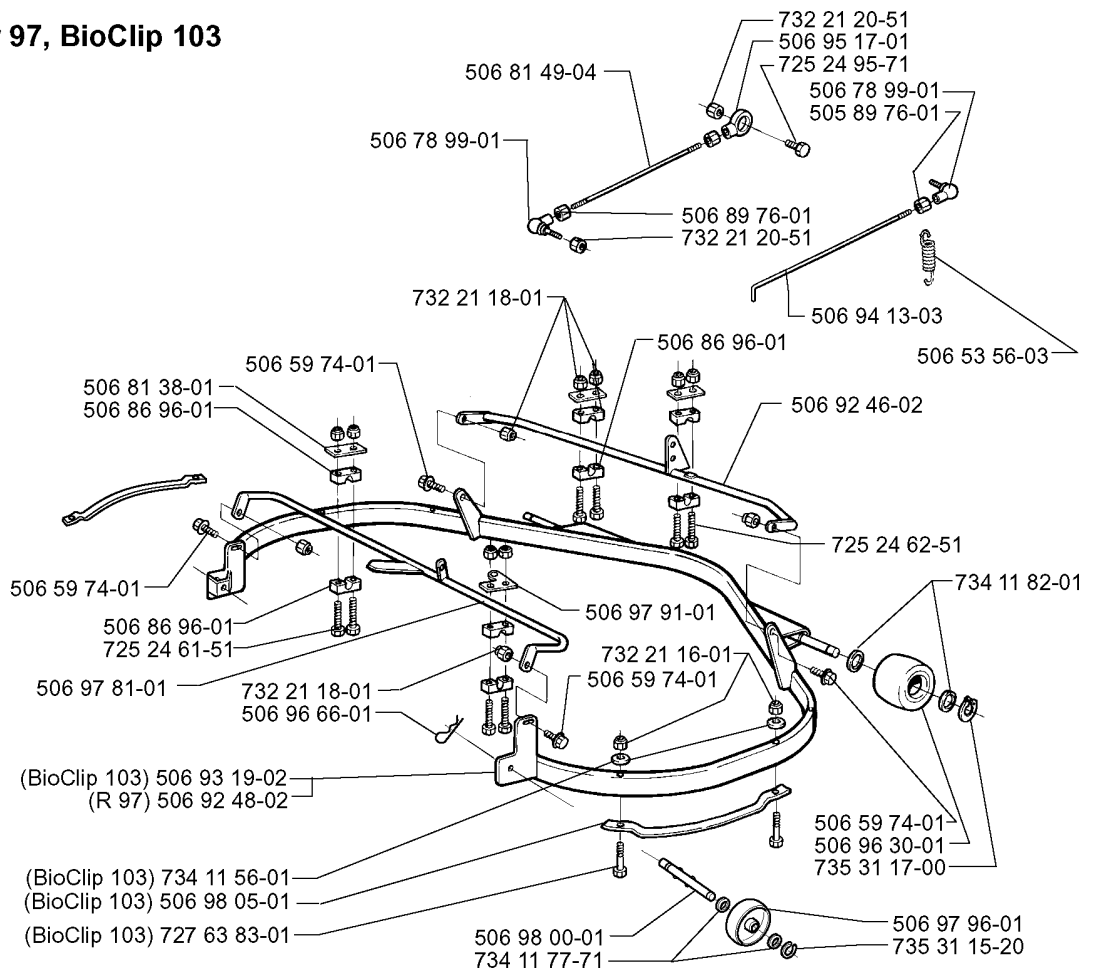


PROTECTION FRAME

RIDER PRO 14, 2000-02

Part No	Description	Remark	QTY KIT
505 89 76-01	NUT		1
506 53 56-03	DRAW SPRING		1
506 59 74-01	SCREW EHHFM		1
506 59 74-01	SCREW EHHFM		1
506 59 74-01	SCREW EHHFM		1
506 59 74-01	SCREW EHHFM		1
506 78 99-01	VINKELLÄNK DIN 71802		1
506 78 99-01	VINKELLÄNK DIN 71802		1
506 81 38-01	REINFORCING PLATE		1
506 81 49-05	ROD		1
506 86 87-02	FRÄMRE TVÄRRÖR KPL.		1
506 86 96-01	BEARING		1
506 86 96-01	BEARING		1
506 86 96-01	BEARING		1
506 89 76-01	NUT		1
506 94 13-04	CONNECTION ROD		1
506 95 17-01	ROD END		1
506 96 30-01	WHEEL ASSY		1
506 96 66-01	HAIR PIN COTTER		1
506 97 81-01	BAKRE TVÄRRÖR KPL.		1
506 97 85-01	HAND GUARD ASSY		1
506 97 91-01	SERVICEBRICKA		1
506 97 96-01	WHEEL		1
506 98 00-01	SHAFT		1
725 24 61-51	SCREW EHHM		1
725 24 61-51	SCREW EHHM		1
725 24 62-51	SCREW EHHM		1
725 24 95-71	SCREW EHHM		1
732 21 18-01	LOCK NUT		1
732 21 18-01	LOCK NUT		1
732 21 20-51	NUT		1
732 21 20-51	NUT		1
734 11 77-71	WASHER		1
734 11 82-01	WASHER		1
735 31 15-20	E-CLIP		1
735 31 17-00	CIRCLIP		1

T Rear 97, BioClip 103



PROTECTION FRAME

RIDER PRO 14, 2000-02

Part No	Description	Remark	QTY KIT
505 89 76-01	NUT		1
506 53 56-03	DRAW SPRING		1
506 59 74-01	SCREW EHHFM		1
506 59 74-01	SCREW EHHFM		1
506 59 74-01	SCREW EHHFM		1
506 59 74-01	SCREW EHHFM		1
506 78 99-01	VINKELLÄNK DIN 71802		1
506 78 99-01	VINKELLÄNK DIN 71802		1
506 81 38-01	REINFORCING PLATE		1
506 81 49-04	ROD		1
506 86 96-01	BEARING		1
506 86 96-01	BEARING		1
506 86 96-01	BEARING		1
506 89 76-01	NUT		1
506 92 46-02	FRÄMRE TVÄRRÖR KPL.		1
506 92 48-02	PROTECTIVE TUBING	R 97	1
506 93 19-02	PROTECTIVE TUBING	BIOCLIP 103	1
506 94 13-03	CONNECTION ROD		1
506 95 17-01	ROD END		1
506 96 30-01	WHEEL ASSY		1
506 96 66-01	HAIR PIN COTTER		1
506 97 81-01	BAKRE TVÄRRÖR KPL.		1
506 97 91-01	SERVICEBRICKA		1
506 97 96-01	WHEEL		1
506 98 00-01	SHAFT		1
506 98 05-01	SIDOSKENA KPL.	BIOCLIP 103	1
725 24 61-51	SCREW EHHM		1
725 24 62-51	SCREW EHHM		1
725 24 95-71	SCREW EHHM		1
727 63 83-01	SCREW RSQM	BIOCLIP 103	1
732 21 16-01	LOCK NUT		1
732 21 18-01	LOCK NUT		1
732 21 18-01	LOCK NUT		1
732 21 20-51	NUT		1
732 21 20-51	NUT		1
734 11 56-01	WASHER	BIOCLIP 103	1
734 11 77-71	WASHER		1
734 11 82-01	WASHER		1
735 31 15-20	E-CLIP		1
735 31 17-00	CIRCLIP		1

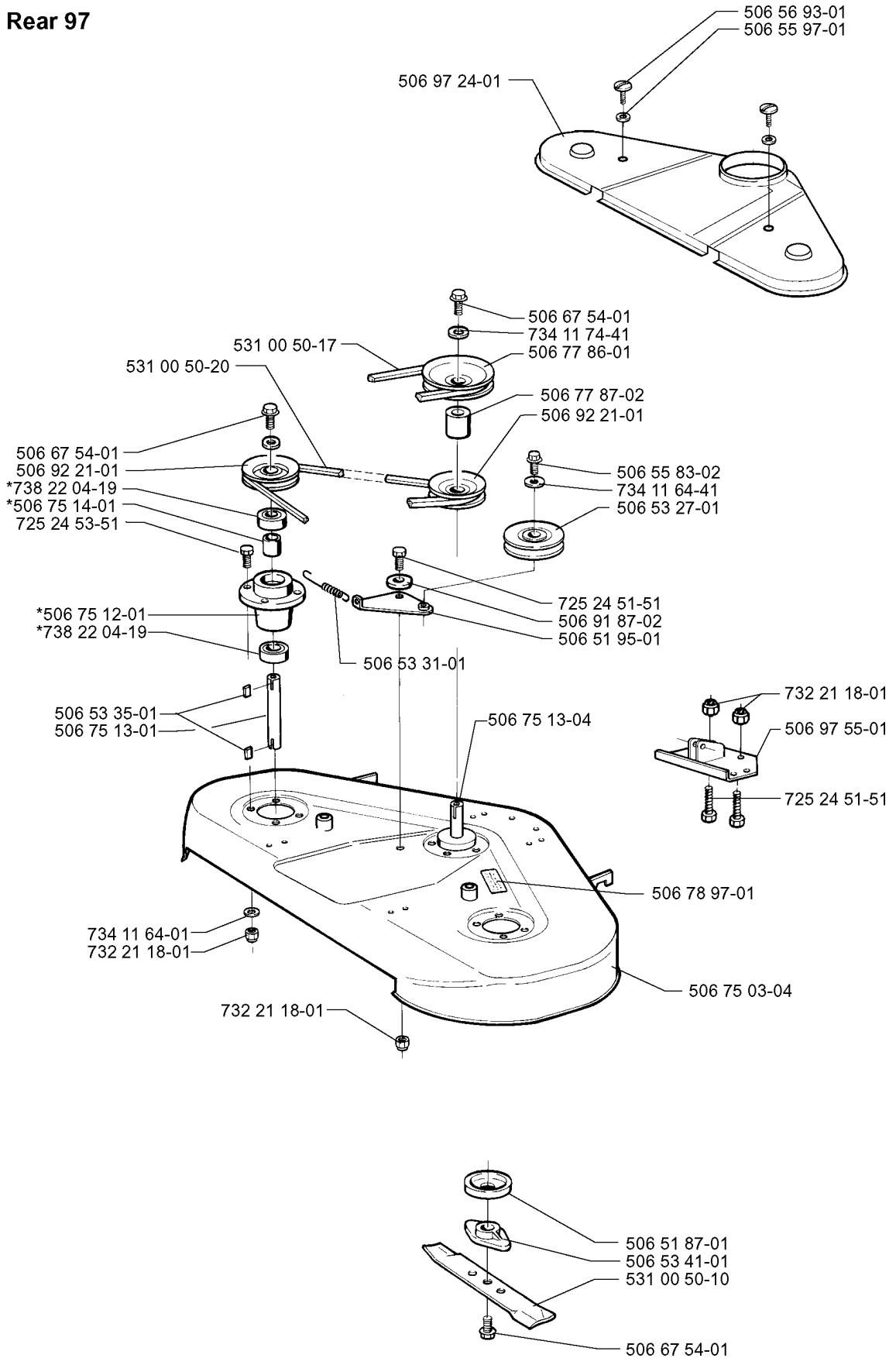
PROTECTION FRAME

RIDER PRO 14, 2000-02

Part No	Description	Remark	QTY KIT
505 89 76-01	NUT		1
506 53 56-03	DRAW SPRING		1
506 59 74-01	SCREW EHHFM		1
506 59 74-01	SCREW EHHFM		1
506 59 74-01	SCREW EHHFM		1
506 59 74-01	SCREW EHHFM		1
506 78 99-01	VINKELLÄNK DIN 71802		1
506 78 99-01	VINKELLÄNK DIN 71802		1
506 81 38-01	REINFORCING PLATE		1
506 81 49-04	ROD		1
506 86 96-01	BEARING		1
506 86 96-01	BEARING		1
506 86 96-01	BEARING		1
506 87 32-01	BAR		1
506 88 97-01	SPACING SLEEVE		1
506 89 76-01	NUT		1
506 92 46-03	FRÄMRE TVÄRRÖR KPL.		1
506 94 13-03	CONNECTION ROD		1
506 95 17-01	ROD END		1
506 96 30-01	WHEEL ASSY		1
506 96 66-01	HAIR PIN COTTER		1
506 97 13-02	PROTECTIVE TUBING		1
506 97 81-01	BAKRE TVÄRRÖR KPL.		1
506 97 91-01	SERVICEBRICKA		1
506 97 96-01	WHEEL		1
506 98 00-01	SHAFT		1
506 98 07-01	BRACKET		1
725 24 57-51	SCREW		1
725 24 62-51	SCREW EHHM		1
725 24 62-51	SCREW EHHM		1
725 24 95-71	SCREW EHHM		1
725 64 53-01	SCREW IHCSFM	CORRECTION:	1
732 21 18-01	LOCK NUT		1
732 21 18-01	LOCK NUT		1
732 21 18-01	LOCK NUT		1
732 21 20-51	NUT		1
732 21 20-51	NUT		1
734 11 64-01	WASHER		1
734 11 77-71	WASHER		1
734 11 82-01	WASHER		1
735 31 15-20	E-CLIP		1
735 31 17-00	CIRCLIP		1

J *compl 506 75 11-01 Yttre. Outer. Exterieur. Äusser. Ulko.
*compl 506 75 11-04 Mitten. Centre. Centre. Zentrum. Keski.

Rear 97



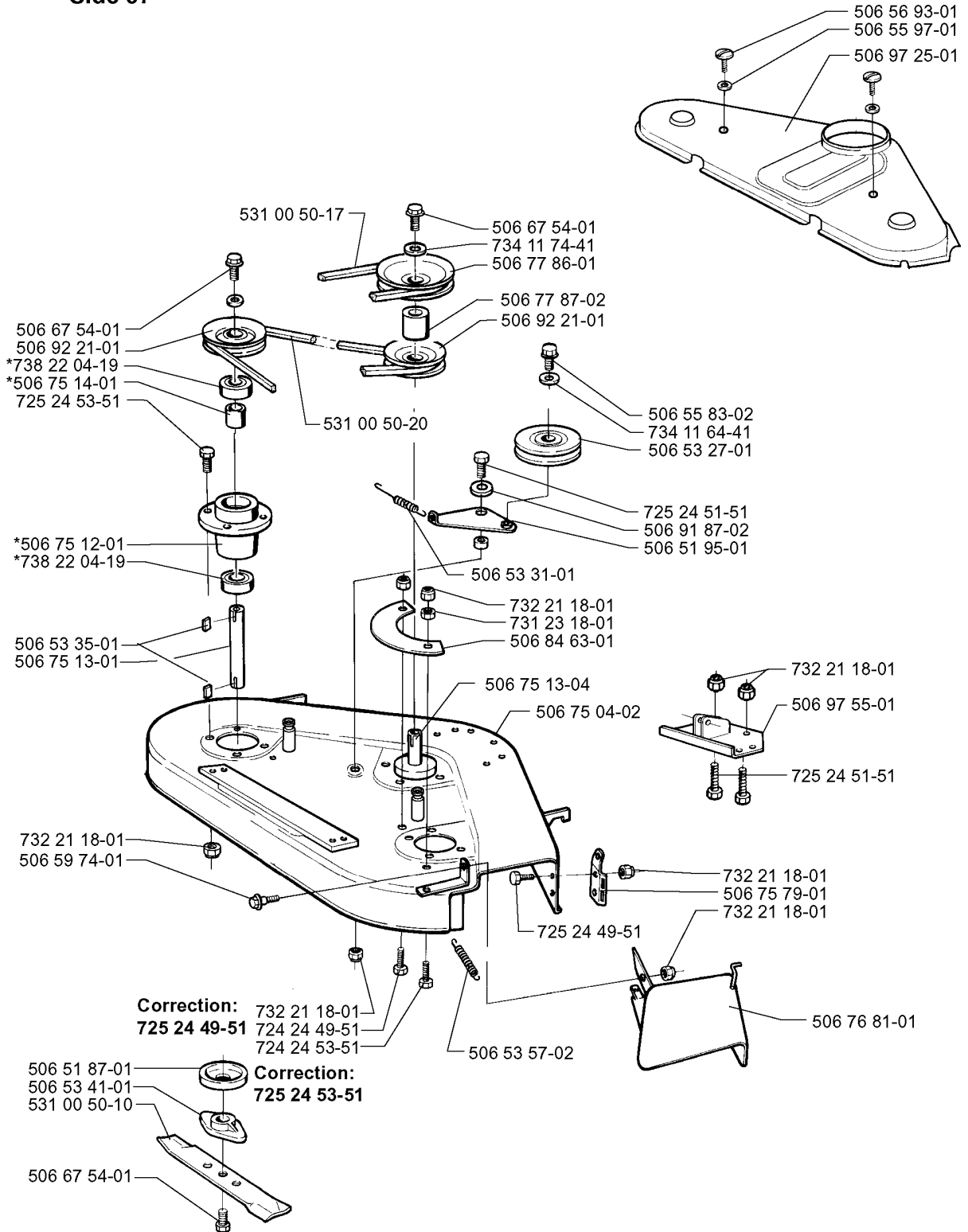
97CM CUTTING DECK

RIDER PRO 14, 2000-02

Part No	Description	Remark	QTY KIT
506 51 87-01	DUST COVER		1
506 51 95-01	SPÄNNARM KPL.		1
506 53 27-01	PULLEY		1
506 53 31-01	SPRING		1
506 53 35-01	PARALLEL KEY		1
506 53 41-01	BLADE		1
506 55 83-02	SCREW EHHFT		1
506 55 97-01	WASHER		1
506 56 93-01	SCREW		1
506 67 54-01	SCREW EHHFM		1
506 67 54-01	SCREW EHHFM		1
506 67 54-01	SCREW EHHFM		1
506 75 03-04	DECK SHELL ASSY		1
506 75 11-01	BLADE HOUSING ASSY	YTTRE.	1
506 75 11-04	BLADE HOUSING ASSY	MITTEN.	1
506 75 12-01	BEARING HOUSING		1
506 75 13-01	SHAFT		1
506 75 13-04	SHAFT		1
506 75 14-01	SPACER		1
506 77 86-01	PULLEY		1
506 77 87-02	SPACER		1
506 78 97-01	LABEL		1
506 91 87-02	WASHER		1
506 92 21-01	PULLEY		1
506 92 21-01	PULLEY		1
506 97 24-01	BELT COVER		1
506 97 55-01	BRACKET		1
531 00 50-10	MOWER BLADE		1
531 00 50-17	BELT		1
531 00 50-20	BELT		1
725 24 51-51	SCREW		1
725 24 51-51	SCREW		1
725 24 53-51	SCREW EHHM		1
732 21 18-01	LOCK NUT		1
732 21 18-01	LOCK NUT		1
732 21 18-01	LOCK NUT		1
734 11 64-01	WASHER		1
734 11 64-41	WASHER		1
734 11 74-41	WASHER		1
738 22 04-19	BALL BEARING		1
738 22 04-19	BALL BEARING		1

U *compl 506 75 11-01 Yttre. Outer. Exterieur. Äusser. Ulko.
 *compl 506 75 11-04 Mitten. Centre. Centre. Zentrum. Keski.

Side 97



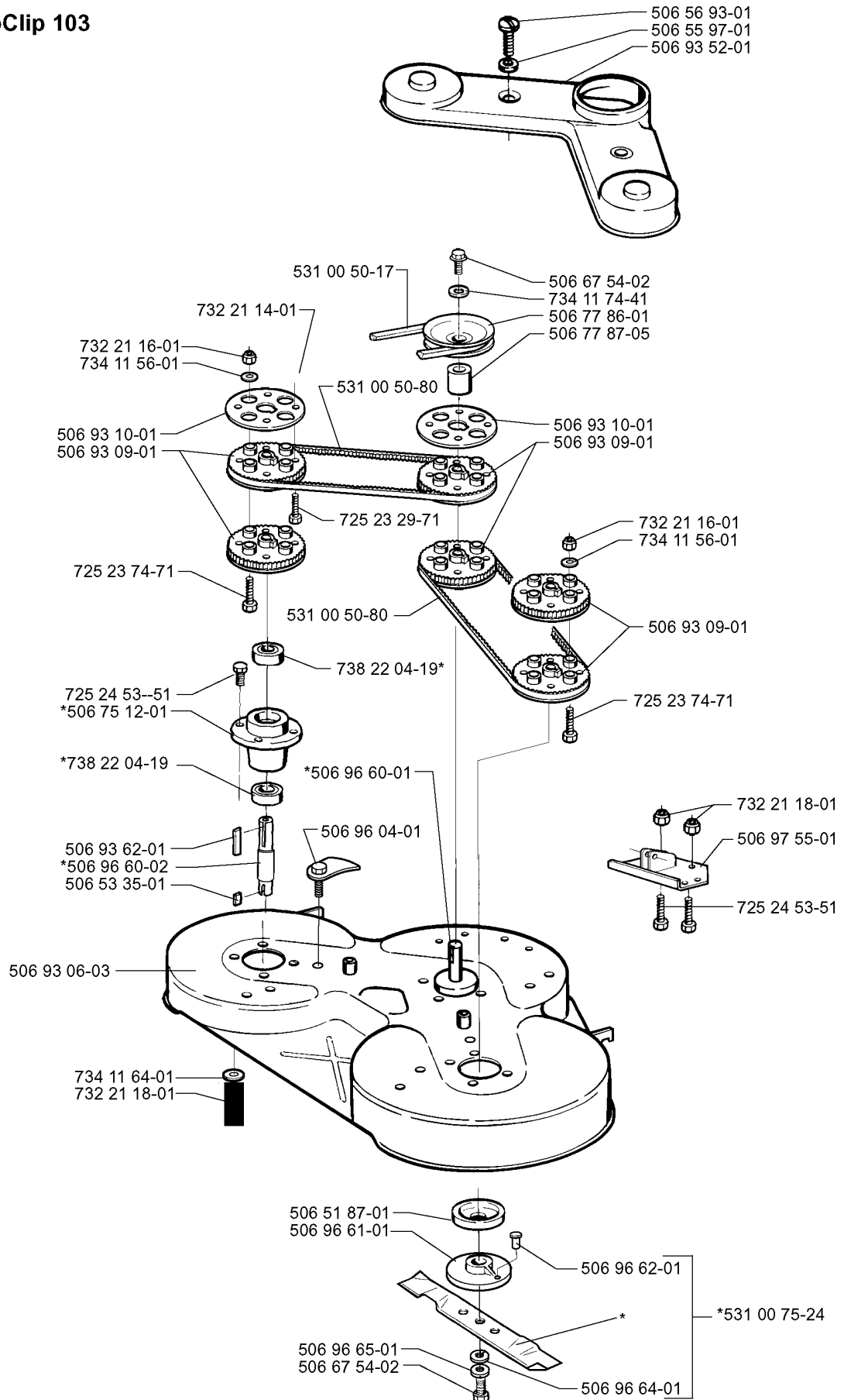
97CM CUTTING DECK

RIDER PRO 14, 2000-02

Part No	Description	Remark	QTY KIT
506 51 87-01	DUST COVER		1
506 51 95-01	SPÄNNARM KPL.		1
506 53 27-01	PULLEY		1
506 53 31-01	SPRING		1
506 53 35-01	PARALLEL KEY		1
506 53 41-01	BLADE		1
506 53 57-02	SPRING		1
506 55 83-02	SCREW EHHFT		1
506 55 97-01	WASHER		1
506 56 93-01	SCREW		1
506 59 74-01	SCREW EHHFM		1
506 67 54-01	SCREW EHHFM		1
506 67 54-01	SCREW EHHFM		1
506 67 54-01	SCREW EHHFM		1
506 75 04-02	DECK SHELL		1
506 75 11-01	BLADE HOUSING ASSY	YTTRE.	1
506 75 11-04	BLADE HOUSING ASSY	MITTEN.	1
506 75 12-01	BEARING HOUSING		1
506 75 13-01	SHAFT		1
506 75 13-04	SHAFT		1
506 75 14-01	SPACER		1
506 75 79-01	BRACKET		1
506 76 81-01	SHIELD		1
506 77 86-01	PULLEY		1
506 77 87-02	SPACER		1
506 84 63-01	COVER		1
506 91 87-02	WASHER		1
506 92 21-01	PULLEY		1
506 92 21-01	PULLEY		1
506 97 25-01	BELT COVER		1
506 97 55-01	BRACKET		1
531 00 50-10	MOWER BLADE		1
531 00 50-17	BELT		1
531 00 50-20	BELT		1
725 24 49-51	SCREW		1
725 24 49-51	SCREW	CORRECTION:	1
725 24 51-51	SCREW		1
725 24 51-51	SCREW		1
725 24 53-51	SCREW EHHM		1
725 24 53-51	SCREW EHHM	CORRECTION:	1
731 23 18-01	HEXAGON NUT		1
732 21 18-01	LOCK NUT		1
732 21 18-01	LOCK NUT		1
732 21 18-01	LOCK NUT		1
732 21 18-01	LOCK NUT		1
732 21 18-01	LOCK NUT		1
732 21 18-01	LOCK NUT		1
734 11 64-41	WASHER		1
734 11 74-41	WASHER		1
738 22 04-19	BALL BEARING		1
738 22 04-19	BALL BEARING		1

S *compl 506 75 11-07 (a)
 *compl 506 75 11-06 (b)

BioClip 103



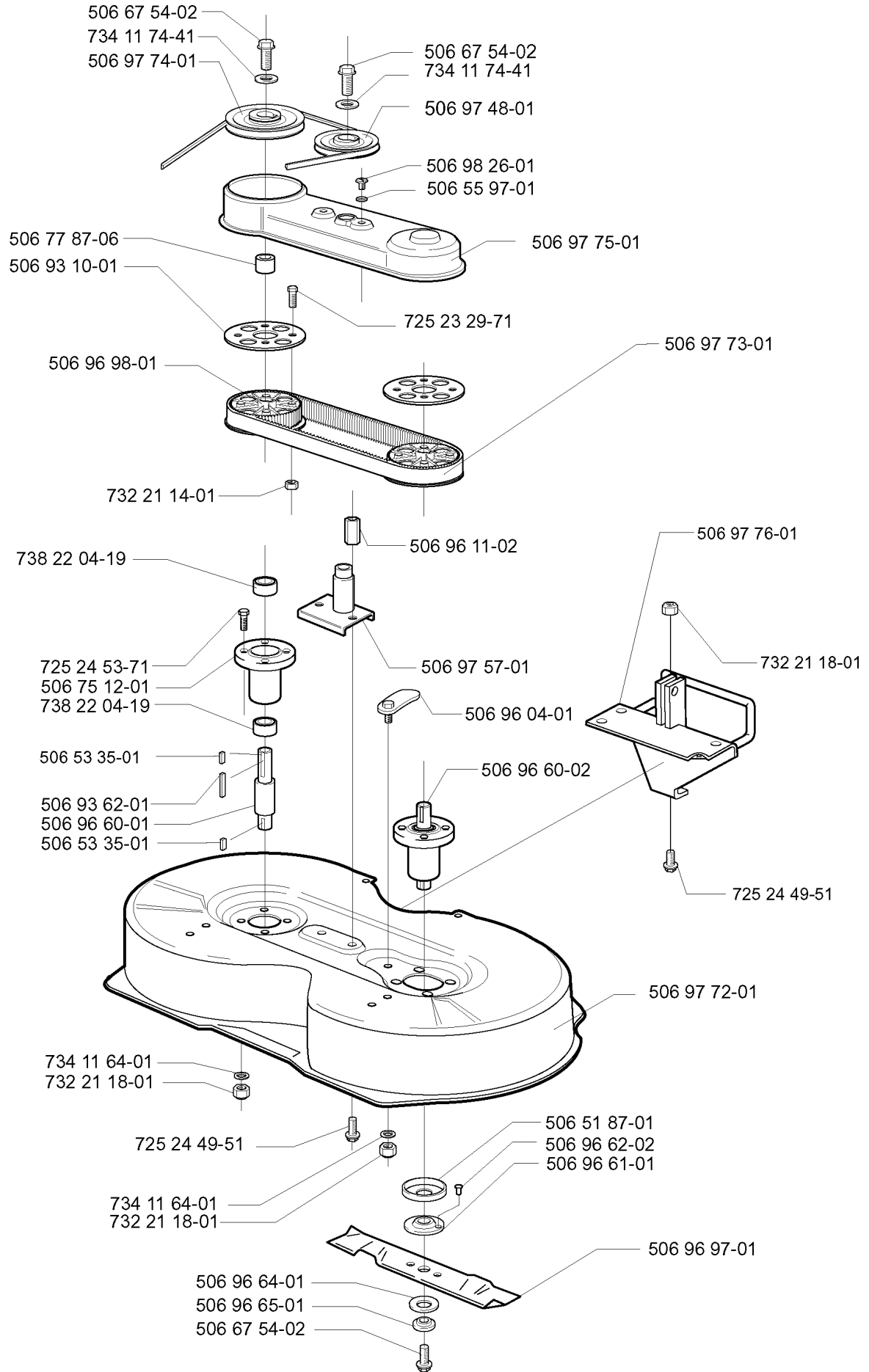
(a) = Yttre. Outer. Exterieur. Äusser. Ulko.
 (b) = Mitten. Center. Centre. Zentrum. Keski.

103CM CUTTING DECK

RIDER PRO 14, 2000-02

Part No	Description	Remark	QTY KIT
506 51 87-01	DUST COVER		1
506 53 35-01	PARALLEL KEY		1
506 55 97-01	WASHER		1
506 56 93-01	SCREW		1
506 67 54-02	SCREW EHHFM		1
506 67 54-02	SCREW EHHFM		1
506 75 11-06	BLADE HOUSING ASSY	(B) = MITTEN.	1
506 75 11-07	BLADE HOUSING ASSY	(A) = YTTRE.	1
506 75 12-01	BEARING HOUSING		1
506 77 86-01	PULLEY		1
506 77 87-05	SPACER		1
506 93 06-03	DECK SHELL ASSY		1
506 93 09-01	KUGGREMSKIVA		1
506 93 09-01	KUGGREMSKIVA		1
506 93 09-01	KUGGREMSKIVA		1
506 93 10-01	FLANGE		1
506 93 10-01	FLANGE		1
506 93 52-01	KUGGREMKÅPA		1
506 93 62-01	WEDGE		1
506 96 04-01	ECCENTRIC		1
506 96 60-01	SHAFT		1
506 96 60-02	SHAFT		1
506 96 61-01	BLADE		1
506 96 62-01	PIN		1
506 96 64-01	CUP		1
506 96 65-01	WASHER		1
506 97 55-01	BRACKET		1
531 00 50-17	BELT		1
531 00 50-80	BELT		1
531 00 50-80	BELT		1
531 00 75-24	BLADE		1
725 23 29-71	SCREW EHHM		1
725 23 74-71	SCREW EHHM		1
725 23 74-71	SCREW EHHM		1
725 24 53-51	SCREW EHHM		1
725 24 53-51	SCREW EHHM		1
732 21 14-01	LOCK NUT		1
732 21 16-01	LOCK NUT		1
732 21 16-01	LOCK NUT		1
732 21 18-01	LOCK NUT		1
732 21 18-01	LOCK NUT		1
734 11 56-01	WASHER		1
734 11 56-01	WASHER		1
734 11 64-01	WASHER		1
734 11 74-41	WASHER		1
738 22 04-19	BALL BEARING		1
738 22 04-19	BALL BEARING		1

Y BioClip 90



90CM CUTTING DECK

RIDER PRO 14, 2000-02

Part No	Description	Remark	QTY KIT
506 51 87-01	DUST COVER		1
506 53 35-01	PARALLEL KEY		1
506 53 35-01	PARALLEL KEY		1
506 55 97-01	WASHER		1
506 67 54-02	SCREW EHHFM		1
506 67 54-02	SCREW EHHFM		1
506 67 54-02	SCREW EHHFM		1
506 75 12-01	BEARING HOUSING		1
506 77 87-06	SPACER		1
506 93 10-01	FLANGE		1
506 93 62-01	WEDGE		1
506 96 04-01	ECCENTRIC		1
506 96 11-02	DISTANSMUTTER		1
506 96 60-01	SHAFT		1
506 96 60-02	SHAFT		1
506 96 61-01	BLADE		1
506 96 62-02	PIN RETAINING SCREW		1
506 96 64-01	CUP		1
506 96 65-01	WASHER		1
506 96 97-01	RIDE ON BLADE		1
506 96 98-01	KUGGREMSKIVA		1
506 97 48-01	PULLEY		1
506 97 57-01	CONSOLE		1
506 97 72-01	DECK SHELL		1
506 97 73-01	BELT		1
506 97 74-01	PULLEY		1
506 97 75-01	BELT COVER		1
506 97 76-01	BRACKET		1
506 98 26-01	SCREW		1
725 23 29-71	SCREW EHHM		1
725 24 49-51	SCREW		1
725 24 49-51	SCREW		1
725 24 53-71	SCREW EHHM		1
732 21 14-01	LOCK NUT		1
732 21 18-01	LOCK NUT		1
732 21 18-01	LOCK NUT		1
732 21 18-01	LOCK NUT		1
734 11 64-01	WASHER		1
734 11 64-01	WASHER		1
734 11 74-41	WASHER		1
734 11 74-41	WASHER		1
738 22 04-19	BALL BEARING		1
738 22 04-19	BALL BEARING		1