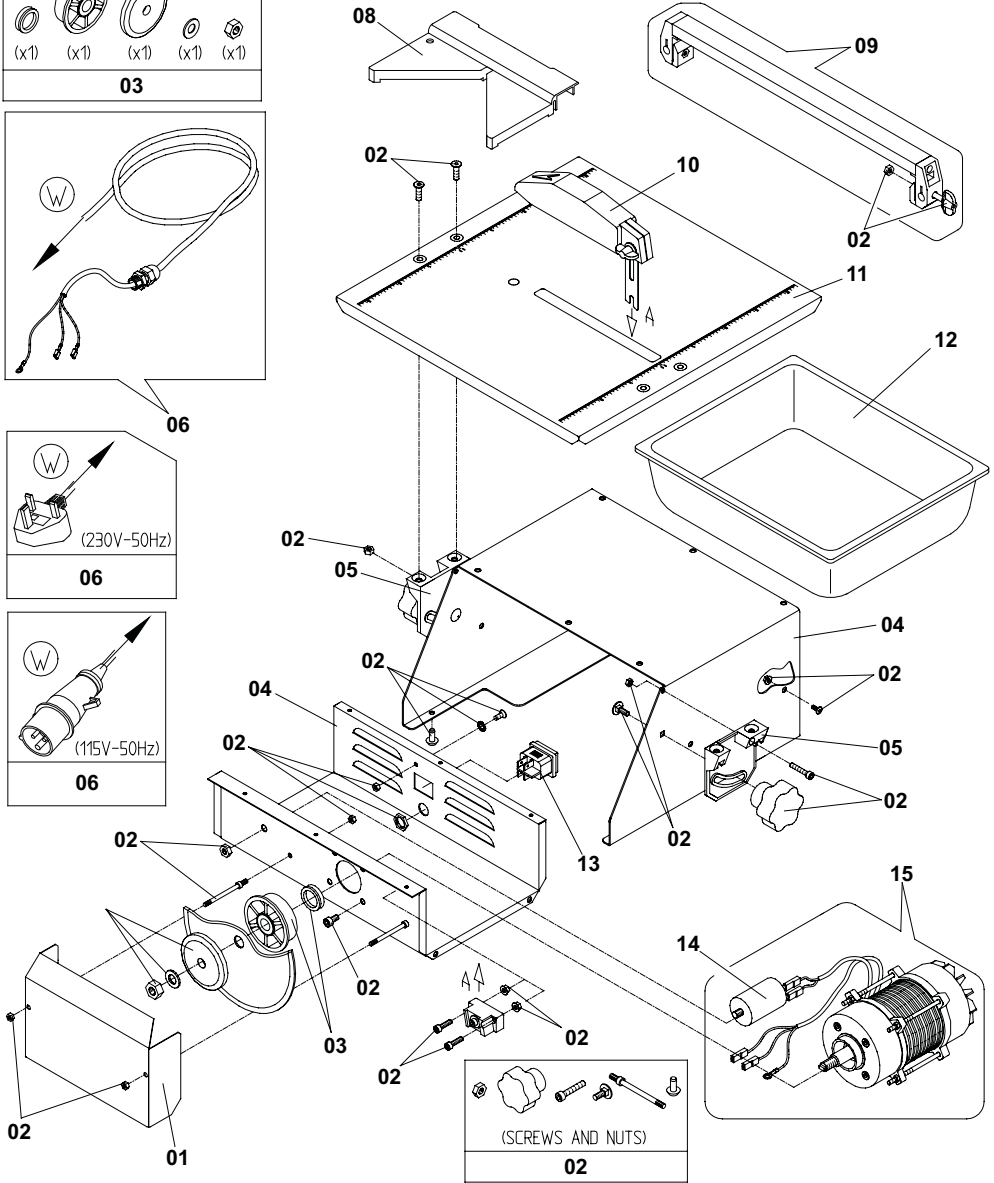
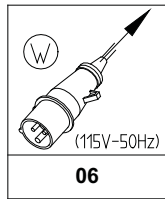
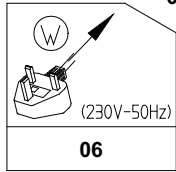
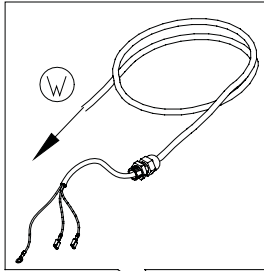
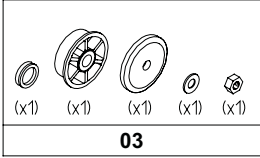
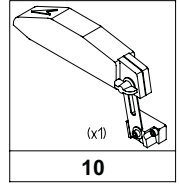
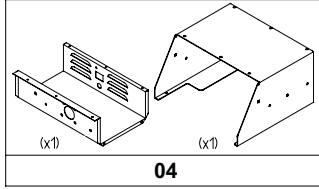
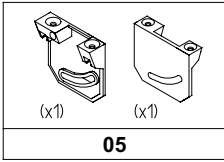


Magiktile 180



Magiktile 180

ITEM NUMBER ⁽¹⁾	PART NUMBER ⁽²⁾	DESCRIPTION ⁽³⁾
1	156.0.301	Outer Cover
2	156.0.305	Screw Kit
3	156.0.296	Plastic Flange Kit c/w Nut
4	156.0.280	Motor Cover
5	156.0.290	Tipping Bracket
6	156.0.282	Electrical Cable (230v - 50Hz)
6	156.0.283	Electrical Cable (115v - 50Hz)
8	156.0.358	Diagonal Fence
9	156.0.284	Cutting Line
10	156.0.311	Disc Guard
11	156.0.281	Cutting Table
12	156.0.304	Water Tank
13	156.0.264	Switch
14	156.0.295	Capacitor (230v - 50Hz)
14	156.0.297	Capacitor (115v - 50Hz)
15	156.0.294	Motor Assembly (230v - 50Hz)
15	156.0.300	Motor Assembly (115v - 50Hz)

⁽¹⁾ **Item Number** / número sur le schéma / número de la ilustración / número da ilustração / afbeeldingsnummer / tegningsnummeret / Teil-Nummer / numero dell'illustrazione

⁽²⁾ **Part Number** / Numéro de référence de la pièce / número de pieza / número da parte / stuknummer / Styknummer / Nummer auf der Abbildung / numero di parte

⁽³⁾ **Description** / Désignation / Descripción / Descrição / Omschrijving / Beskrivelse / Bezeichnung / Descrizione