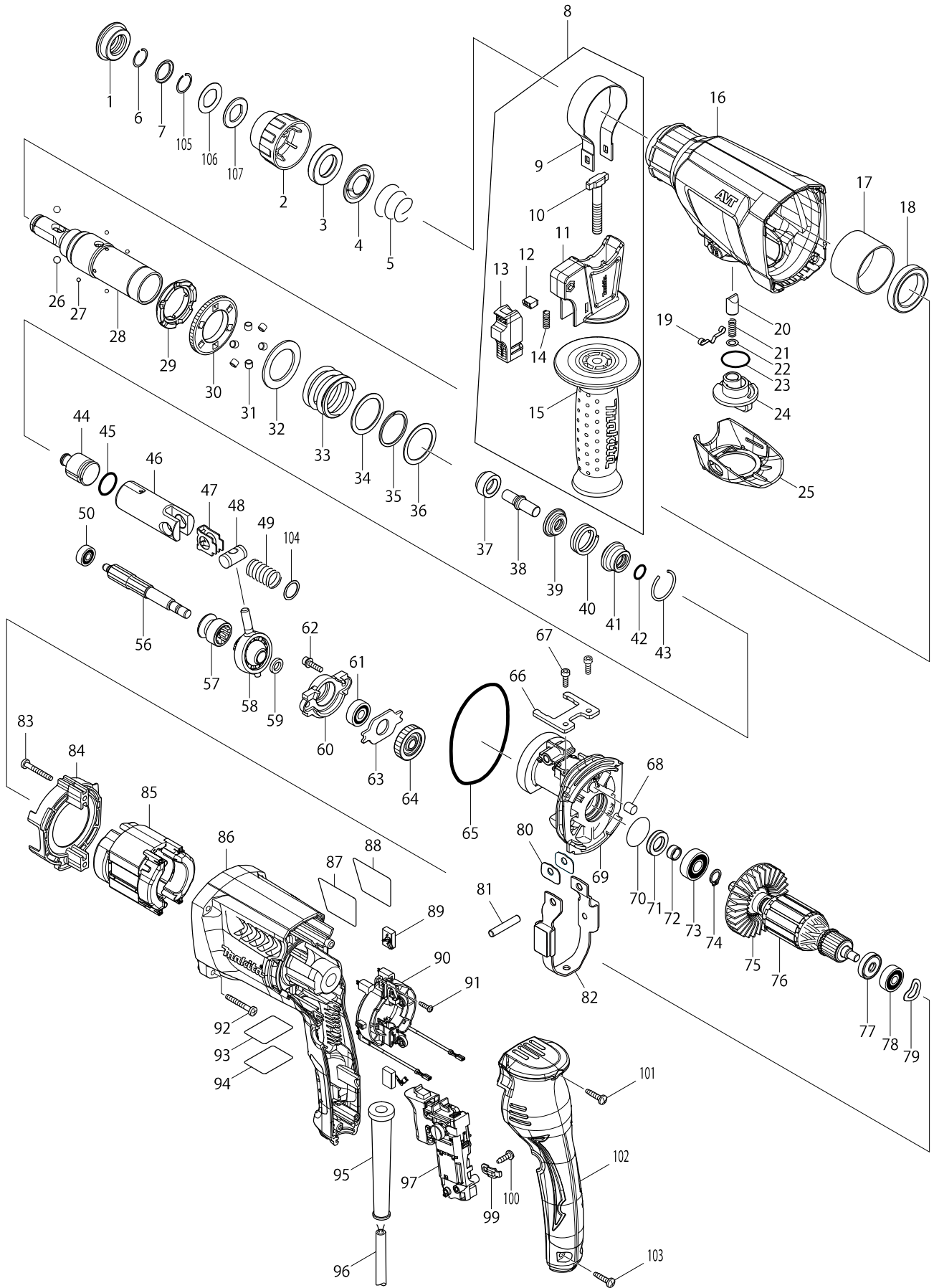


# Model No. HR2601 26MM ROTARY HAMMER



# Model No. HR2601 26MM ROTARY HAMMER

| Item   | Parts No. | Description                | I/C | QTY | N/O | Opt. 1 | Opt. 2 | NOTE |
|--------|-----------|----------------------------|-----|-----|-----|--------|--------|------|
| 001    | 286288-8  | CAP 35                     |     | 1   |     | 100    |        |      |
| 002    | 451533-2  | CHUCK COVER                |     | 1   | *   | 100    |        |      |
| 002-1  | 455393-4  | CHUCK COVER                | S   | 1   |     |        |        |      |
| 003    | 325813-1  | RING 21                    |     | 1   |     | 100    |        |      |
| 004    | 346177-0  | GUIDE WASHER               |     | 1   |     | 100    |        |      |
| 005    | 233916-6  | CONICAL COMP. SPRING 21-29 |     | 1   |     | 100    |        |      |
| 006    | 233989-9  | RING SPRING 14             |     | 1   |     | 100    |        |      |
| 007    | 346221-3  | WASHER 16                  |     | 1   | *   | 100    |        |      |
| 007-1  | 346834-0  | WASHER 16                  | S   | 1   |     |        |        |      |
| 008    | 122878-2  | GRIP ASSEMBLY              |     | 1   |     |        |        |      |
| D10    |           | INC. 9-15                  |     |     |     |        |        |      |
| 009    | 346181-9  | GRIP SPRING 50             |     | 1   |     | 100    |        |      |
| 010    | 266349-0  | SQUARE BOLT M8X50          |     | 1   |     | 100    |        |      |
| 011    | 451539-0  | GRIP BASE                  |     | 1   |     | 100    |        |      |
| 012A   | 313179-1  | RACK                       |     | 1   | *   | 100    |        |      |
| 012B   | 313179-1  | RACK                       |     | 1   | *   | 100    |        |      |
| 013A   | 451540-5  | LOCK BUTTON                |     | 1   | *   | 100    |        |      |
| 013B   | 451540-5  | LOCK BUTTON                |     | 1   | *   | 100    |        |      |
| 013-1A | 141765-6  | LOCK BUTTON COMPLETE       | S   | 1   |     | 100    |        |      |
| 013-1B | 141765-6  | LOCK BUTTON COMPLETE       | S   | 1   |     | 100    |        |      |
| 013-1C | 141765-6  | LOCK BUTTON COMPLETE       |     | 1   |     | 100    |        |      |
| 013-1D | 141765-6  | LOCK BUTTON COMPLETE       |     | 1   |     | 100    |        |      |
| 014    | 233360-7  | COMPRESSION SPRING 4       |     | 1   |     | 100    |        |      |
| 015    | 154935-8  | GRIP 36 COMPLETE           |     | 1   |     |        |        |      |
| 016    | 140268-7  | GEAR HOUSING COMPLETE      |     | 1   |     | 100    |        |      |
| C10    | 213345-9  | OIL SEAL 25                |     | 1   |     | 100    |        |      |
| 017    | 331890-3  | CUP SLEEVE                 |     | 1   |     | 100    |        |      |
| 018    | 211294-4  | BALL BEARING 6806LLU       |     | 1   |     | 100    |        |      |
| 019    | 232152-1  | LEAF SPRING                |     | 1   |     | 100    |        |      |
| 020    | 325785-0  | PUSH CORN                  |     | 1   |     | 100    |        |      |
| 021    | 234147-0  | COMPRESSION SPRING 5       |     | 1   |     | 100    |        |      |
| 022    | 253308-3  | THIN WASHER 6              |     | 1   |     | 100    |        |      |
| 023    | 213381-5  | O RING 21                  |     | 1   |     | 100    |        |      |
| 024    | 451531-6  | CHANGE LEVER B             |     | 1   |     | 100    |        |      |
| 025    | 451532-4  | CHANGE LEVER COVER B       |     | 1   |     | 100    |        |      |
| 026    | 216022-2  | STEEL BALL 7.0             |     | 2   |     | 100    |        |      |
| 027    | 216019-1  | STEEL BALL 3               |     | 4   |     | 100    |        |      |
| 028    | 140265-3  | TOOL HOLDER COMPLETE       |     | 1   | *   | 100    |        |      |
| 028-1  | 142972-4  | TOOL HOLDER COMPLETE       | <   | 1   |     |        |        |      |
| 029    | 313149-0  | DRIVING FLANGE             |     | 1   | *   |        |        |      |
| 029-1  | 332139-4  | DRIVING FLANGE             | S   | 1   |     |        |        |      |
| 030    | 227232-6  | SPUR GEAR 51               |     | 1   | *   | 100    |        |      |
| 030-1  | 227360-7  | SPUR GEAR 51               | S   | 1   |     |        |        |      |
| 031    | 268226-2  | PIN 6                      |     | 6   | *   | 100    |        |      |
| 032    | 267414-8  | FLAT WASHER 30             |     | 1   | *   | 100    |        |      |
| 033    | 234148-8  | COMPRESSION SPRING 31      |     | 1   |     | 100    |        |      |
| 034    | 267153-0  | FLAT WASHER 30             |     | 1   |     | 100    |        |      |
| 035    | 257932-4  | SPIRO LOCK WASHER 30       |     | 1   |     | 100    |        |      |

# Model No. HR2601 26MM ROTARY HAMMER

| Item   | Parts No. | Description                 | I/C | QTY | N/O | Opt. 1 | Opt. 2 | NOTE |
|--------|-----------|-----------------------------|-----|-----|-----|--------|--------|------|
| 036    | 267153-0  | FLAT WASHER 30              |     | 1   |     | 100    |        |      |
| 037    | 325783-4  | SLEEVE 9B                   |     | 1   |     | 100    |        |      |
| 038    | 325789-2  | IMPACT BOLT A               |     | 1   |     | 100    |        |      |
| 039    | 325792-3  | WASHER 10                   |     | 1   |     | 100    |        |      |
| 040    | 234149-6  | COMPRESSION SPRING 20       |     | 1   |     | 100    |        |      |
| 041    | 325793-1  | O-RING CASE B               |     | 1   |     | 100    |        |      |
| 042    | 213073-6  | O RING 9                    |     | 1   |     | 100    |        |      |
| 043    | 233979-2  | RING SPRING 28              |     | 1   |     | 100    |        |      |
| 044    | 325784-2  | STRIKER                     |     | 1   |     | 100    |        |      |
| 045    | 213258-4  | O RING 17.5                 |     | 1   |     | 100    |        |      |
| 046    | 310345-1  | PISTON CYLINDER             |     | 1   |     | 100    |        |      |
| 047    | 346036-8  | GUIDE PLATE                 |     | 1   |     | 100    |        |      |
| 048    | 324215-8  | PISTON JOINT                |     | 1   |     | 100    |        |      |
| 049    | 234098-7  | COMPRESSION SPRING 14       |     | 1   |     | 100    |        |      |
| 050    | 211012-0  | BALL BEARING 606ZZ          |     | 1   | *   | 100    |        |      |
| 050-1  | 210028-2  | BALL BEARING 606ZZ          | O   | 1   |     | 100    |        |      |
| 056    | 227243-1  | SPUR GEAR 10                |     | 1   |     | 100    |        |      |
| 057    | 331815-7  | CLUTCH CAM B                |     | 1   |     | 100    |        |      |
| 058    | 219020-5  | SWASH BEARING 10            |     | 1   |     | 100    |        |      |
| 059    | 267234-0  | FLAT WASHER 8               |     | 1   |     | 100    |        |      |
| 060    | 310344-3  | BEARING BOX                 |     | 1   |     | 100    |        |      |
| 061    | 211032-4  | BALL BEARING 608ZZ          |     | 1   |     | 100    |        |      |
| 062    | 266437-3  | HEX. SOCKET HEAD BOLT M4X16 |     | 2   |     | 100    |        |      |
| 063    | 285735-6  | BEARING RETAINER            |     | 1   |     | 100    |        |      |
| 064    | 227719-8  | HELICAL GEAR 26             |     | 1   |     | 100    |        |      |
| 065    | 213728-3  | O-RING 68                   |     | 1   |     | 100    |        |      |
| 066    | 346222-1  | PLATE                       |     | 1   |     | 100    |        |      |
| 067    | 265353-6  | HEX. SOCKET HEAD BOLT M4X12 |     | 2   |     | 100    |        |      |
| 068A   | 443153-6  | FELT                        |     | 1   | *   | 100    |        |      |
| 068B   | 443153-6  | FELT                        |     | 1   | *   | 100    |        |      |
| 069A   | 140267-9  | INNER HOUSING COMPLETE      |     | 1   | *   | 100    |        |      |
| 069B   | 140267-9  | INNER HOUSING COMPLETE      |     | 1   | *   | 100    |        |      |
| 069-1A | 141573-5  | INNER HOUSING COMPLETE      | S   | 1   | *   | 100    |        |      |
| 069-1B | 141573-5  | INNER HOUSING COMPLETE      | S   | 1   | *   | 100    |        |      |
| 069-2A | 141573-5  | INNER HOUSING COMPLETE      | O   | 1   |     | 100    |        |      |
| 069-2B | 141573-5  | INNER HOUSING COMPLETE      | O   | 1   |     | 100    |        |      |
| 069-2C | 141573-5  | INNER HOUSING COMPLETE      |     | 1   |     | 100    |        |      |
| 069-2D | 141573-5  | INNER HOUSING COMPLETE      |     | 1   |     | 100    |        |      |
| 070    | 213407-3  | O RING 26                   |     | 1   |     | 100    |        |      |
| 071A   | 213133-4  | OIL SEAL 12                 |     | 1   | *   | 100    |        |      |
| 071B   | 213133-4  | OIL SEAL 12                 |     | 1   | *   | 100    |        |      |
| 071-1A | 213678-2  | OIL SEAL 12                 | O   | 1   |     | 100    |        |      |
| 071-1B | 213678-2  | OIL SEAL 12                 | O   | 1   |     | 100    |        |      |
| 071-1C | 213678-2  | OIL SEAL 12                 |     | 1   |     | 100    |        |      |
| 071-1D | 213678-2  | OIL SEAL 12                 |     | 1   |     | 100    |        |      |
| 072    | 262569-4  | SLEEVE 9                    |     | 1   |     | 100    |        |      |
| 073    | 211097-6  | BALL BEARING 6000LLB        |     | 1   |     | 100    |        |      |
| 074    | 961006-2  | RETAINING RING S-10         |     | 1   |     | 100    |        |      |

# Model No. HR2601 26MM ROTARY HAMMER

| Item  | Parts No. | Description                 | I/C | QTY | N/O | Opt. 1 | Opt. 2 | NOTE |
|-------|-----------|-----------------------------|-----|-----|-----|--------|--------|------|
| 075   | 240121-8  | FAN 65                      |     | 1   |     | 100    |        |      |
| D10   |           | INC. 72-75,77,78            |     |     |     |        |        |      |
| 076A  | 518156-0  | ARMATURE ASSEMBLY 115V      |     | 1   |     | 151    |        |      |
| 076B  | 515359-7  | ARMATURE ASSEMBLY 240V      |     | 1   |     | 151    |        |      |
| 076C  | 518156-0  | ARMATURE ASSEMBLY 115V      |     | 1   |     | 151    |        |      |
| 076D  | 515359-7  | ARMATURE ASSEMBLY 240V      |     | 1   |     | 151    |        |      |
| 077   | 681652-2  | INSULATION WASHER           |     | 1   |     | 100    |        |      |
| 078   | 210023-2  | BALL BEARING 627DDW         |     | 1   |     | 100    |        |      |
| 079   | 267804-5  | WAVE WASHER 15              |     | 1   |     | 100    |        |      |
| 080   | 346180-1  | WEIGHT HOLDER GUIDE         |     | 2   |     | 100    |        |      |
| 081   | 256246-8  | PIN 6                       |     | 1   |     | 100    |        |      |
| 082   | 165593-5  | COUNTER WEIGHT              |     | 1   |     | 100    |        |      |
| 083   | 266361-0  | TAPPING SCREW 4X30          |     | 2   |     | 100    |        |      |
| 084   | 451527-7  | BAFFLE PLATE                |     | 1   |     | 100    |        |      |
| 085A  | 628185-6  | FIELD 115V                  |     | 1   |     | 152    |        |      |
| 085B  | 626634-7  | FIELD 240V                  |     | 1   |     | 152    |        |      |
| 085C  | 628185-6  | FIELD 115V                  |     | 1   |     | 152    |        |      |
| 085D  | 626634-7  | FIELD 240V                  |     | 1   |     | 152    |        |      |
| 086   | 451536-6  | MOTOR HOUSING               |     | 1   |     | 100    |        |      |
| 087   | 867682-9  | HR2601 NAME PLATE           |     | 1   |     |        |        |      |
| 088   | 819390-8  | CLEAR LABEL                 |     | 1   |     | 100    |        |      |
| 089   | 194074-2  | CARBON BRUSH CB-325         |     | 1   |     | 100    |        |      |
| 090   | 638655-7  | BRUSH HOLDER UNIT           |     | 1   |     | 100    |        |      |
| 091   | 266556-5  | TAPPING SCREW 3X12          |     | 2   |     | 100    |        |      |
| 092   | 266361-0  | TAPPING SCREW 4X30          |     | 4   |     | 100    |        |      |
| 093   | 867685-3  | HR2601 SERIAL NO.LABEL      |     | 1   |     |        |        |      |
| 094   | 819389-3  | CLEAR LABEL                 |     | 1   |     | 100    |        |      |
| 095   | 682566-8  | CORD GUARD 10               |     | 1   |     | 100    |        |      |
| 096A  | 665940-5  | POWER SUPPLY CORD 1.0-2-4.0 |     | 1   |     | 100    |        |      |
| 096B  | 692502-6  | POWER SUPPLY CORD 1.0-2-4.0 |     | 1   |     | 100    |        |      |
| 096C  | 665940-5  | POWER SUPPLY CORD 1.0-2-4.0 |     | 1   |     | 100    |        |      |
| 096D  | 692502-6  | POWER SUPPLY CORD 1.0-2-4.0 |     | 1   |     | 100    |        |      |
| 097   | 650625-6  | SWITCH                      |     | 1   |     | 100    |        |      |
| 099   | 687682-1  | STRAIN RELIEF               |     | 1   |     | 100    |        |      |
| 100   | 266385-6  | TAPPING SCREW 4X14          |     | 1   |     | 100    |        |      |
| 101   | 266326-2  | TAPPING SCREW 4X18          |     | 1   |     | 100    |        |      |
| 102   | 451528-5  | HANDLE COVER                |     | 1   |     | 100    |        |      |
| 103   | 266326-2  | TAPPING SCREW 4X18          |     | 2   |     | 100    |        |      |
| 104   | 267447-3  | FLAT WASHER 14              |     | 1   |     | 100    |        |      |
| 105   | 233992-0  | RING SPRING 15              |     | 1   |     | 100    |        |      |
| 106   | 267437-6  | FLAT WASHER 17              |     | 1   | *   | 100    |        |      |
| 106-1 | 267114-0  | FLAT WASHER 17              | S   | 1   |     | 100    |        |      |
| 107   | 424364-2  | RUBBER WASHER 16            |     | 1   | *   | 100    |        |      |
| A01   | 331886-4  | DEPTH GAUGE                 |     | 1   |     |        |        |      |
| A02A  | 824913-9  | PLASTIC CARRYING CASE       |     | 1   |     |        |        |      |
| C10   | 162302-3  | LATCH                       |     | 2   |     | 100    |        |      |
| C20   | 324207-7  | SHAFT                       |     | 1   |     | 100    |        |      |
| C30   | 451749-9  | HANDLE                      |     | 1   |     |        |        |      |

# Model No. HR2601 26MM ROTARY HAMMER

| Item | Parts No. | Description                    | I/C | QTY | N/O | Opt. 1 | Opt. 2 | NOTE |
|------|-----------|--------------------------------|-----|-----|-----|--------|--------|------|
| A02B | 824913-9  | PLASTIC CARRYING CASE          |     | 1   |     |        |        |      |
| C10  | 162302-3  | LATCH                          |     | 2   |     | 100    |        |      |
| C20  | 324207-7  | SHAFT                          |     | 1   |     | 100    |        |      |
| C30  | 451749-9  | HANDLE                         |     | 1   |     |        |        |      |
| A02C | 821550-0  | CONNECTOR PLASTIC CASE (TYPE2) |     | 1   |     |        |        |      |
| C10  | 453974-8  | LATCH                          |     | 4   |     | 100    |        |      |
| A02D | 821550-0  | CONNECTOR PLASTIC CASE (TYPE2) |     | 1   |     |        |        |      |
| C10  | 453974-8  | LATCH                          |     | 4   |     | 100    |        |      |
| A03A | 816430-3  | HR2601 PLASTIC CASE LABEL      |     | 2   |     | 100    |        |      |
| A03B | 816430-3  | HR2601 PLASTIC CASE LABEL      |     | 2   |     | 100    |        |      |
| A03C | 802P00-0  | HR2601J PLASTIC CASE LABEL     |     | 2   |     |        |        |      |
| A03D | 802P00-0  | HR2601J PLASTIC CASE LABEL     |     | 2   |     |        |        |      |
| A04C | 802N99-3  | HR2601J INDICATION LABEL       |     | 1   |     |        |        |      |
| A04D | 802N99-3  | HR2601J INDICATION LABEL       |     | 1   |     |        |        |      |
| A05C | 837651-4  | INNER TRAY                     |     | 1   |     |        |        |      |
| A05D | 837651-4  | INNER TRAY                     |     | 1   |     |        |        |      |
| E01A | 655030-2  | PLUG UK TYPE 16A-4H/110V       |     | 1   |     |        |        |      |
| E01C | 655030-2  | PLUG UK TYPE 16A-4H/110V       |     | 1   |     |        |        |      |
| E02A | 654091-9  | NON-INSULATED TERMINAL1.25-2AF |     | 2   |     | 100    |        |      |
| E02C | 654091-9  | NON-INSULATED TERMINAL1.25-2AF |     | 2   |     | 100    |        |      |
|      |           |                                |     |     |     |        |        |      |
|      |           |                                |     |     |     |        |        |      |
|      |           |                                |     |     |     |        |        |      |
|      |           |                                |     |     |     |        |        |      |
|      |           |                                |     |     |     |        |        |      |
|      |           |                                |     |     |     |        |        |      |
|      |           |                                |     |     |     |        |        |      |
|      |           |                                |     |     |     |        |        |      |
|      |           |                                |     |     |     |        |        |      |
|      |           |                                |     |     |     |        |        |      |
|      |           |                                |     |     |     |        |        |      |
|      |           |                                |     |     |     |        |        |      |
|      |           |                                |     |     |     |        |        |      |
|      |           |                                |     |     |     |        |        |      |
|      |           |                                |     |     |     |        |        |      |
|      |           |                                |     |     |     |        |        |      |
|      |           |                                |     |     |     |        |        |      |
|      |           |                                |     |     |     |        |        |      |
|      |           |                                |     |     |     |        |        |      |
|      |           |                                |     |     |     |        |        |      |
|      |           |                                |     |     |     |        |        |      |
|      |           |                                |     |     |     |        |        |      |
|      |           |                                |     |     |     |        |        |      |
|      |           |                                |     |     |     |        |        |      |
|      |           |                                |     |     |     |        |        |      |
|      |           |                                |     |     |     |        |        |      |