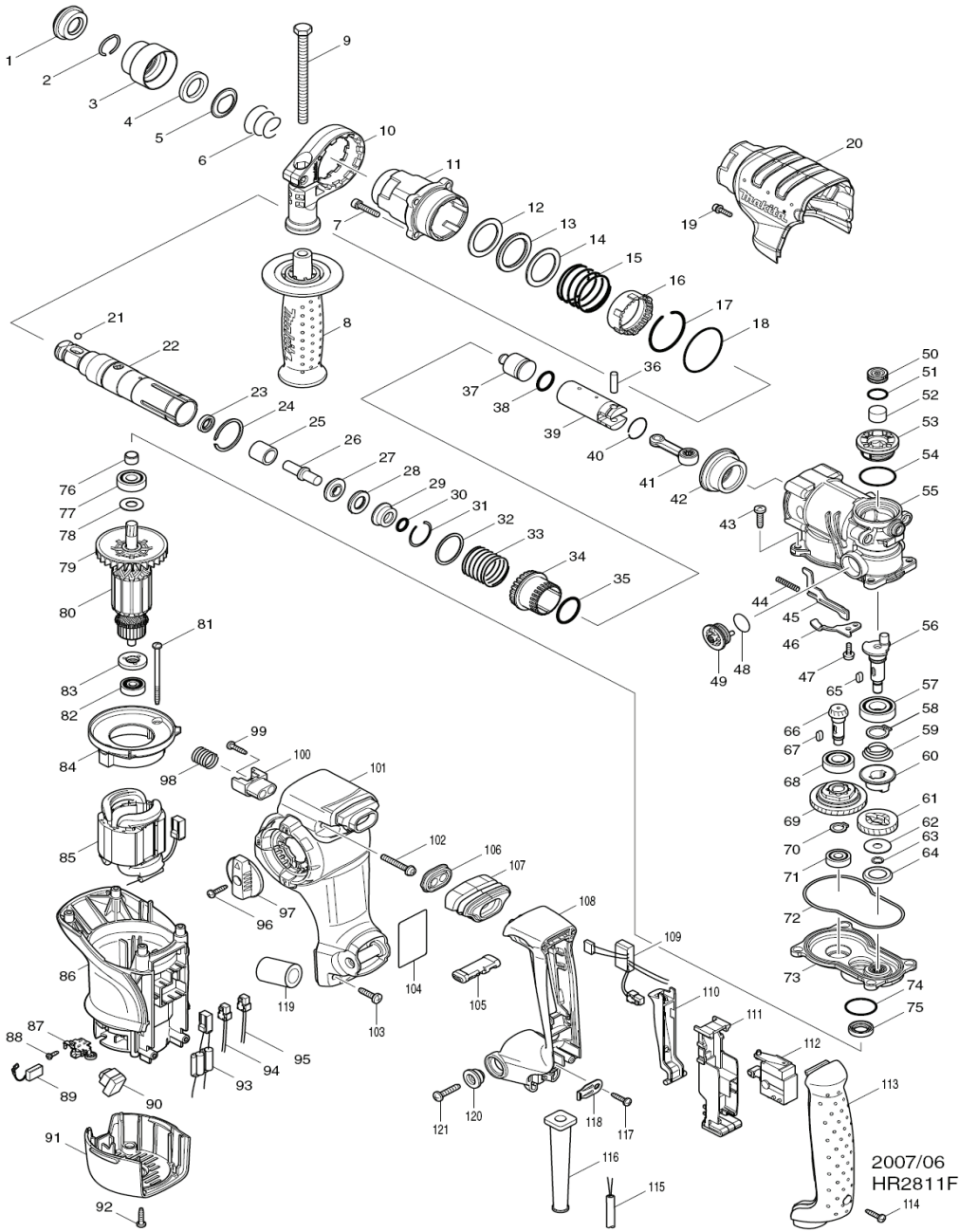




HR2811F



2007/06
HR2811F

Item	Sub	Sub_Explanation	Parts_No.	Parts_Description	Qty	Unit	Note
1			286263-4	CAP 35	1	PC.	
2			233940-9	RING SPRING 19	1	PC.	
3			417629-9	CHUCK COVER	1	PC.	
4			267241-1	RING 2-1	1	PC.	
5			345187-4	GUIDE WASHER	1	PC.	
6			233916-6	CONICAL COMP. SPRING 21-29	1	PC.	
7			922241-7	HEX. SOCKET HEAD BOLT M5X25	4	PC.	
8			154842-5	GRIP 36 COMPLETE	1	PC.	
9			931402-8	HEX. NUT M6	1	PC.	
10	C10		921919-5	HEX. BOLT M8X110	1	PC.	
11			419975-6	GRIP BASE 20	1	PC.	
12			158288-7	BARREL COMPLETE	1	PC.	
13	C10		212403-8	NEEDLE BEARING 3012	1	PC.	
14	C20		213965-9	OIL SEAL 25	1	PC.	
15			267354-0	FLAT WASHER 31	1	PC.	
16			262133-1	URETHANE RING 31	1	PC.	
17			267354-0	FLAT WASHER 31	1	PC.	
18			234020-4	COMPRESSION SPRING 37	1	PC.	
19			419986-1	LOCK SLEEVE	1	PC.	
20			233952-2	RING SPRING 41	1	PC.	
21			213620-3	O RING 46	1	PC.	
22			922128-3	HEX. SOCKET HEAD BOLT M4X16	1	PC.	
23			419984-5	CRANK HOUSING COMPLETE	1	PC.	
24			216022-2	STEEL BALL 7.0	1	PC.	
25			158285-3	TOOL HOLDER COMPLETE	1	PC.	
26			213076-0	OIL SEAL 9	1	PC.	
27			961140-8	RETAINING RING	1	PC.	
28			331769-8	SLEEVE 9	1	PC.	
29			324669-9	IMPACT BOLT	1	PC.	
30			324402-9	RING 10	1	PC.	
31			421935-0	CUSHION RING 13	1	PC.	
32			324216-6	O RING CASE	1	PC.	
33			213073-6	O RING 9	1	PC.	
34			233917-4	RING SPRING 28	1	PC.	
35			267105-1	FLAT WASHER 29	1	PC.	
36			234021-2	COMPRESSION SPRING 30	1	PC.	
37			331770-3	DRIVING SLEEVE	1	PC.	
38			213438-8	O RING 26	1	PC.	
39			256099-6	PIN 6	1	PC.	
40			324733-6	STRIKER	1	PC.	
41			213227-6	O RING 16	1	PC.	
42			331776-1	PISTON CYLINDER	1	PC.	
43			233954-8	RING SPRING 21	1	PC.	
44			158282-9	CONNECTING ROD COMPLETE	1	PC.	
45	C10		212043-2	NEEDLE BEARING 810	1	PC.	
46			227532-4	SPIRAL BEVEL GEAR 31	1	PC.	
47			266420-0	TAPPING SCREW 5X20	4	PC.	
48			234019-9	COMPRESSION SPRING 4	1	PC.	
49			345814-3	LINK PLATE	1	PC.	
50			345815-1	GUIDE PLATE	1	PC.	
51			911118-1	PAN HEAD SCREW M4X12	1	PC.	
52			213252-3	O RING 18	1	PC.	
53			162256-4	LINK LEVER COMPLETE	1	PC.	
54			419988-7	FILTER CAP	1	PC.	
55			213218-6	O RING 16	1	PC.	
56			443129-3	FILTER	1	PC.	
57			419997-9	CRANK CAP	1	PC.	
58			213406-5	O RING 30	1	PC.	
59			158289-5	CRANK HOUSING COMPLETE	1	PC.	
60			324793-8	CRANK SHAFT	1	PC.	
61			211232-6	BALL BEARING 6002LLU	1	PC.	
62			961034-7	RETAINING RING S-15	1	PC.	
63			233951-4	C. C. SPRING 16-26	1	PC.	
64			223167-9	CLUTCH	1	PC.	
65			226533-9	HELICAL GEAR 29	1	PC.	
66			267353-2	FLAT WASHER 8	1	PC.	
67			961034-7	RETAINING RING	1	PC.	
68			345818-5	CUP WASHER 16	1	PC.	
69			254239-9	KEY 4	2	PC.	
70			227532-4	SPIRAL BEVEL GEAR 9	1	PC.	
71			254239-9	KEY 4	1	PC.	
72			210105-0	BALL BEARING 6001LLU	1	PC.	
73			125386-2	TORQUE LIMITER ASSY	1	PC.	
74			961006-2	RETAINING RING S-10	1	PC.	
75			210024-0	BALL BEARING 608LLU	1	PC.	
76			424028-8	SEAL RING	1	PC.	
77			158287-9	GEAR HOUSING COMPLETE	1	PC.	
78			213445-6	O RING 26	1	PC.	
79			213133-4	OIL SEAL 12	1	PC.	
80			331775-3	SLEEVE 10	1	PC.	
81			210054-1	BALL BEARING 6000LLU	1	PC.	
82			253171-4	FLAT WASHER 10	1	PC.	
83			240095-3	FAN 64	1	PC.	
84			151291-5	ARMATURE ASSY 115V	1	PC.	
85			080A	INC. 798283	0	PC.	110V
86			080A	ARMATURE ASSY 240V	1	PC.	240V
87			080A	INC. 798283	0	PC.	240V
88			266325-4	TAPPING SCREW 4X70	2	PC.	
89			210023-2	BALL BEARING 627DDW	1	PC.	
90			681666-4	INSULATION WASHER	1	PC.	
91			419999-5	BUCKET PLATE	1	PC.	
92			528182-1	FIELD ASSY 115V	1	PC.	110V
93	C10		654283-0	CONTACT	2	PC.	
94	C20		686044-0	CONNECTOR HOUSING	1	PC.	
95	C10		526584-5	FIELD ASSY 240V	1	PC.	240V
96	C20		684283-0	CONTACT	2	PC.	
97			686044-0	CONNECTOR HOUSING	1	PC.	
98			419982-9	MOTOR HOUSING	1	PC.	
99			643766-5	BRUSH HOLDER	2	PC.	
100			266421-8	TAPPING SCREW 3X10	2	PC.	
101			194074-2	CARBON BRUSH CB-325	1	SET	
102			631754-4	LED CIRCUIT	1	PC.	
103			419993-7	REAR COVER	1	PC.	
104			266326-2	TAPPING SCREW 4X18	2	PC.	
105			638568-2	CHOKE COIL UNIT	1	PC.	
106			638567-4	LEAD UNIT	1	PC.	
107			638566-3	LEAD UNIT	1	PC.	
108			266326-2	TAPPING SCREW 4X18	1	PC.	
109			158294-5	CHANGE LEVER COMPLETE	1	PC.	
110			234022-0	COMPRESSION SPRING 14	1	PC.	
111			266326-2	TAPPING SCREW 4X18	2	PC.	
112			419995-0	SPRING GUIDE	1	PC.	
113			419979-8	HANDLE BASE	1	PC.	
114			911258-5	PAN HEAD SCREW M5X35	2	PC.	
115			266420-0	TAPPING SCREW 5X20	2	PC.	
116			863926-7	HR2811F NAME PLATE	1	PC.	
117			419992-6	REAR CHANGE LEVER	1	PC.	
118			419994-2	DUST COVER SUPPORT	1	PC.	
119			424029-4	DUST COVER	1	PC.	
120			419978-0	HANDLE	1	PC.	
121			631752-8	POWER SUPPLY CIRCUIT	1	PC.	110V
122			631753-6	POWER SUPPLY CIRCUIT	1	PC.	240V
123			419990-0	SWITCH LEVER	1	PC.	
124			158281-1	SWITCH HOLDER COMPLETE	1	PC.	
125			650591-7	SWITCH	1	PC.	
126			419990-3	HANDLE COVER	1	PC.	
127			266326-2	TAPPING SCREW 4X18	1	PC.	
128			666940-5	POWER SUPPLY CORD 1.0-2-4.0	1	PC.	110V
129			692502-6	POWER SUPPLY CORD 1.0-2-4.0	1	PC.	240V
130	115A		692573-1	CORD GUARD 1.0	1	PC.	
131			266326-2	TAPPING SCREW 4X18	1	PC.	
132			687169-3	STRAIN RELIEF	1	PC.	
133			665722-9	SPONGE	1	PC.	
134			313139-3	SHOULDER SLEEVE 6	2	PC.	
135			266041-8	TAPPING SCREW 5X25	2	PC.	
136			324219-0	DEPTH GAUGE	1	PC.	
137	A01		824789-4	PLASTIC CARRYING CASE	1	PC.	
138	A02		324207-7	SHAFT	1	PC.	
139	A02		417724-5	LATCH	1	PC.	
140	A02		158216-3	HANDLE	2	PC.	
141	A03		805774-6	HR2811F PLASTIC CASE LABEL	1	PC.	
142	A03A		806387-6	HR2811F-1 PLASTIC CASE LABEL	1	PC.	
143	A03A-1		805774-6	HR2811F PLASTIC CASE LABEL	1	PC.	
144	A04		D-03888	SDS-PLUS BIT SET	3	SET	
145	A05		D-08735	SCALING CHISEL40-250	1	PC.	
146	E01		656030-2	PLUG UK TYPE 16A-4H/110V	1	PC.	110V
147	E02		654091-9	NON-INSULATED TERMINAL	2	PC.	110V