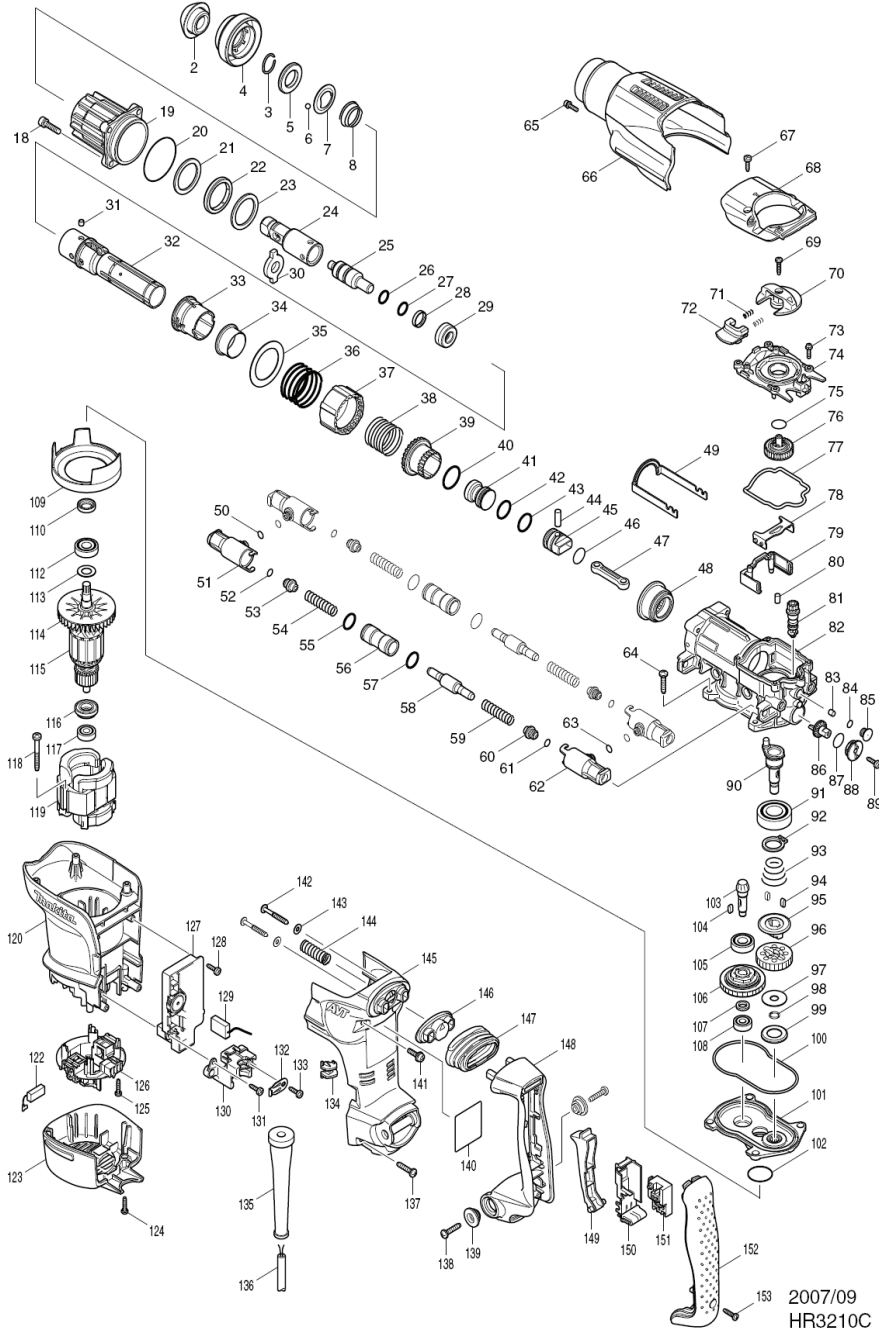


HR3210C



2007/09
HR3210C

| Item | Sub | Sub_Explanation | Parts_No. | Parts_Description | Qty | Unit | Note |
|------|-----|-----------------|-----------|--------------------------------|-----|------|------|
| 2 | | | 286282-0 | TOOL HOLDER CAP | 1 | PC. | |
| 3 | | | 233940-9 | RING SPRING 19 | 1 | PC. | |
| 4 | | | 450245-4 | CHUCK COVER | 1 | PC. | |
| 5 | | | 257288-5 | RING 21 | 1 | PC. | |
| 6 | | | 216022-2 | STEEL BALL 7.0 | 2 | PC. | |
| 7 | | | 345873-7 | GUIDE WASHER | 1 | PC. | |
| 8 | | | 234049-0 | CONICAL COMPRESSIONSPRING22-32 | 1 | PC. | |
| 18 | | | 922341-3 | HEX. SOCKET HEAD BOLT M6X25 | 4 | PC. | |
| 19 | | | 158533-0 | BARREL COMPLETE | 1 | PC. | |
| 19 | C10 | | 213436-6 | OIL SEAL 28 | 1 | PC. | |
| 19 | C20 | | 213516-8 | O RING 36 | 1 | PC. | |
| 20 | | | 213656-2 | O RING 53 | 1 | PC. | |
| 21 | | | 267810-0 | FLAT WASHER 34 | 1 | PC. | |
| 22 | | | 262138-1 | URETHAN RING 34 | 1 | PC. | |
| 23 | | | 267810-0 | FLAT WASHER 34 | 1 | PC. | |
| 24 | | | 324840-5 | TOOL HOLDER | 1 | PC. | |
| 25 | | | 324849-7 | IMPACT BOLT | 1 | PC. | |
| 26 | | | 213228-3 | O RING 15 | 1 | PC. | |
| 27 | | | 213228-3 | O RING 15 | 1 | PC. | |
| 28 | | | 213321-3 | FLUORO CARBON RESIN RING 20 | 1 | PC. | |
| 29 | | | 424062-8 | RUBBER RING 13 | 1 | PC. | |
| 30 | | | 324838-2 | SLIDE PLATE | 1 | PC. | |
| 31 | | | 256266-2 | PIN 6 | 4 | PC. | |
| 32 | | | 331794-9 | CYLINDER 25 | 1 | PC. | |
| 33 | | | 450243-8 | SLIDE SLEEVE | 1 | PC. | |
| 34 | | | 331805-0 | RING 29 | 1 | PC. | |
| 35 | | | 267360-5 | FLAT WASHER 40 | 1 | PC. | |
| 36 | | | 234052-1 | COMPRESSION SPRING 42 | 1 | PC. | |
| 37 | | | 450236-5 | LOCK SLEEVE | 1 | PC. | |
| 38 | | | 234050-5 | COMPRESSION SPRING 34 | 1 | PC. | |
| 39 | | | 331795-7 | DRIVING SLEEVE | 1 | PC. | |
| 40 | | | 213434-0 | O RING 26 | 1 | PC. | |
| 41 | | | 324858-6 | STRIKER | 1 | PC. | |
| 42 | | | 213283-5 | O-RING 18 | 1 | PC. | |
| 43 | | | 213283-5 | O-RING 18 | 1 | PC. | |
| 44 | | | 256087-2 | PIN 7 | 1 | PC. | |
| 45 | | | 324918-4 | PISTON | 1 | PC. | |
| 46 | | | 213262-3 | O RING 18 | 1 | PC. | |
| 47 | | | 450235-7 | CONNECTING ROD | 1 | PC. | |
| 48 | | | 227531-6 | SPIRAL BEVEL GEAR 37 | 1 | PC. | |
| 49 | | | 345867-2 | LINK ARM | 1 | PC. | |
| 50 | | | 213030-4 | O RING 8 | 2 | PC. | |
| 51 | | | 450248-8 | PIPE HOLDER | 2 | PC. | |
| 52 | | | 213030-4 | O RING 8 | 2 | PC. | |
| 53 | | | 450239-9 | SPRING GUIDE | 2 | PC. | |
| 54 | | | 234048-2 | COMPRESSION SPRING 10 | 2 | PC. | |
| 55 | | | 213275-4 | O RING 18 | 2 | PC. | |
| 56 | | | 331800-0 | PIPE 15 | 2 | PC. | |
| 57 | | | 213275-4 | O RING 18 | 2 | PC. | |
| 58 | | | 324862-5 | COUNTER WEIGHT | 2 | PC. | |
| 59 | | | 234048-2 | COMPRESSION SPRING 10 | 2 | PC. | |
| 60 | | | 450239-9 | SPRING GUIDE | 2 | PC. | |
| 61 | | | 213030-4 | O RING 8 | 2 | PC. | |
| 62 | | | 450248-8 | PIPE HOLDER | 2 | PC. | |
| 63 | | | 213030-4 | O RING 8 | 2 | PC. | |
| 64 | | | 266041-8 | TAPPING SCREW 5X25 | 4 | PC. | |
| 65 | | | 922123-3 | HEX. SOCKET HEAD BOLT M4X14 | 1 | PC. | |
| 66 | | | 450254-3 | CRANK HOUSING COVER | 1 | PC. | |
| 67 | | | 266192-7 | TAPPING SCREW 4X14 | 2 | PC. | |
| 68 | | | 318201-9 | CRANK CAP COVER | 1 | PC. | |
| 69 | | | 265995-6 | TAPPING SCREW 4X18 | 1 | PC. | |
| 70 | | | 450249-6 | CHANGE LEVER | 1 | PC. | |
| 71 | | | 233436-0 | COMPRESSION SPRING 3 | 2 | PC. | |
| 72 | | | 450250-1 | LOCK BUTTON | 1 | PC. | |
| 73 | | | 911128-8 | PAN HEAD SCREW M4X16 | 5 | PC. | |
| 74 | | | 450241-2 | CRANK CAP | 1 | PC. | |
| 75 | | | 213223-3 | O RING 16 | 1 | PC. | |
| 76 | | | 158437-6 | SPUR GEAR 33 COMPLETE | 1 | PC. | |
| 77 | | | 424064-4 | SEAL RING B | 1 | PC. | |
| 78 | | | 345868-0 | LINK PLATE | 1 | PC. | |
| 79 | | | 450247-0 | AIR PIPE | 1 | PC. | |
| 80 | | | 263005-3 | RUBBER PIN 6 | 2 | PC. | |
| 81 | | | 450242-0 | GEAR SHAFT | 1 | PC. | |
| 82 | | | 158531-4 | CRANK HOUSING COMPLETE | 1 | PC. | |
| 82 | C10 | | 213579-4 | O-RING 44 | 1 | PC. | |
| 82 | C10 | | 158712-0 | CRANK HOUSING COMPLETE | 1 | PC. | |
| 82 | C10 | | 213579-4 | O-RING 44 | 1 | PC. | |
| 83 | | | 443138-2 | FILTER | 1 | PC. | |
| 84 | | | 213030-4 | O RING 8 | 1 | PC. | |
| 85 | | | 450238-1 | FILTER CAP | 1 | PC. | |
| 86 | | | 450244-6 | CRANK GEAR | 1 | PC. | |
| 87 | | | 213223-3 | O RING 16 | 1 | PC. | |
| 88 | | | 450237-3 | CAP HOLDER | 1 | PC. | |
| 89 | | | 266192-7 | TAPPING SCREW 4X14 | 1 | PC. | |
| 90 | | | 324839-0 | CRANK SHAFT | 1 | PC. | |
| 91 | | | 211332-2 | BALL BEARING 6004LLU | 1 | PC. | |
| 92 | | | 961060-6 | RETAINING RING S-20 | 1 | PC. | |