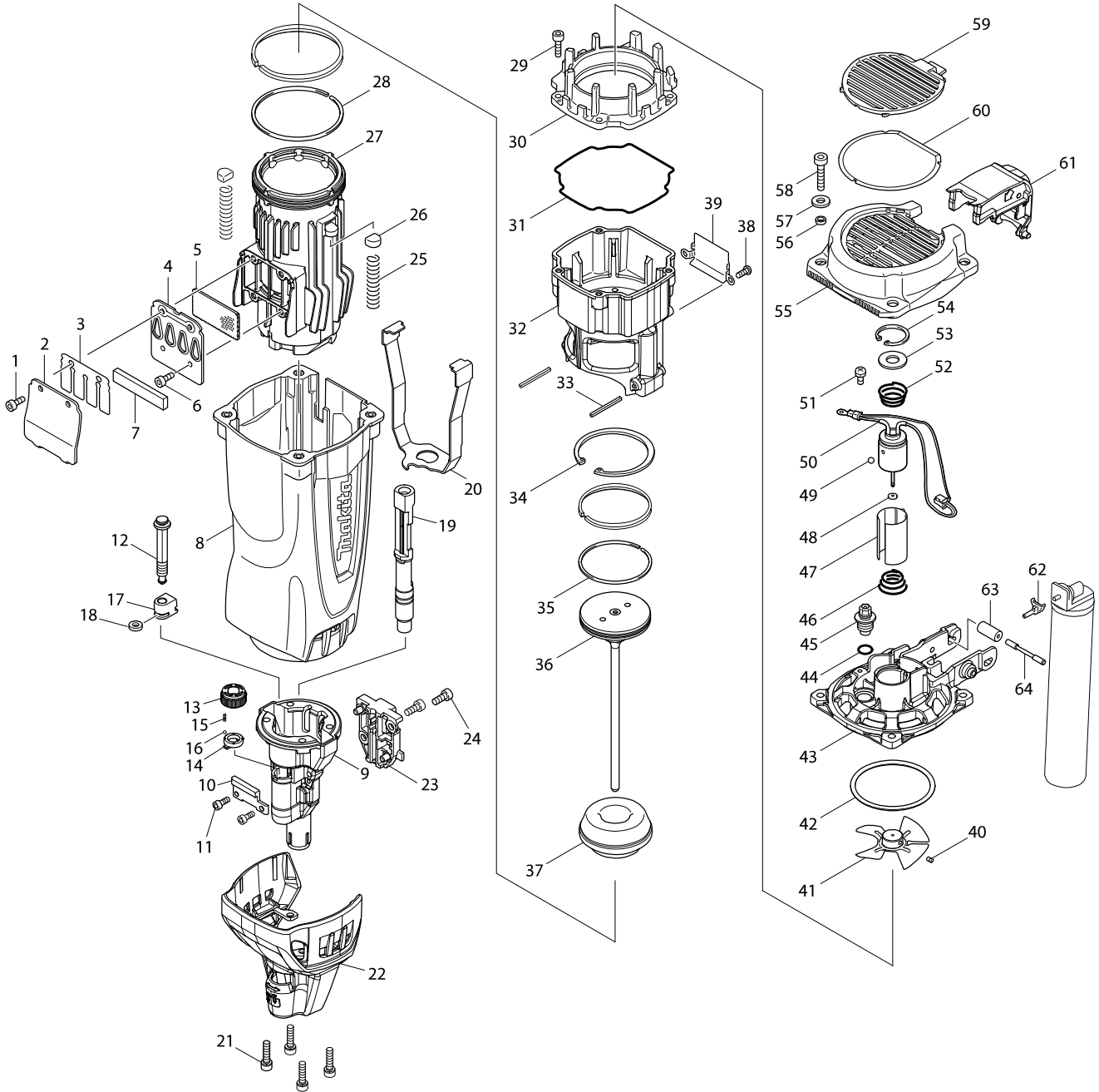
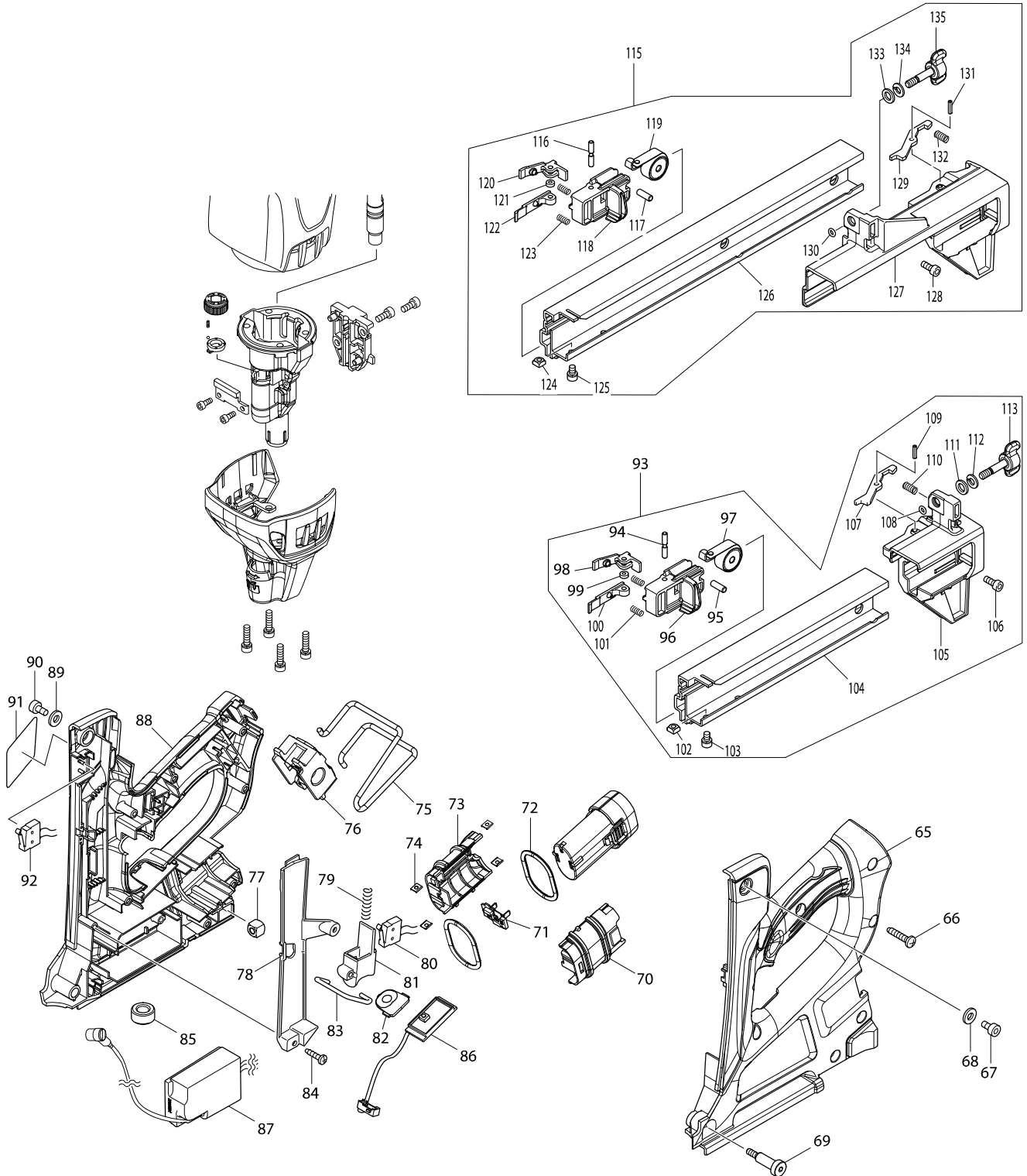


Model No. GN420C CORDLESS CONCRETE NAILER



Model No. GN420C CORDLESS CONCRETE NAILER



Model No. GN420C CORDLESS CONCRETE NAILER

Item	Parts No.	Description	I/C	QTY	N/O	Opt. 1	Opt. 2	NOTE
001	922112-8	HEX. SOCKET HEAD BOLT M4X10		2	100			
002	345984-8	EXHAUST COVER		1	155			
003	345982-2	EXHAUST VALVE		1	155			
004	345983-0	EXHAUST PLATE		1	155			
005	352008-3	PUNCHING METAL		1	155			
006	922112-8	HEX. SOCKET HEAD BOLT M4X10		2	100			
007	352009-1	SILENCER		1	155			
008	450729-2	HOUSING		1	155			
009	310517-8	DRIVER GUIDE		1	100			
010	310524-1	NAIL PLATE		1	100			
011	266167-6	HEX. SOCKET HEAD BOLT M4X10		2	100			
012	326246-3	ADJUSTER ROD		1	100			
013	453806-9	ADJUSTER		1	100			
014	453807-7	ADJUSTER GUIDE		1	100			
015	234254-9	COMPRESSION SPRING 2		1	100			
016	216031-1	STEEL BALL 2.3		1	100			
017	310519-4	ADJUSTER BLOCK		1	100			
018	262164-0	RUBBER RING 5		1	100			
019	331996-7	CONTACT TOP		1	100			
020	346613-6	ARM		1	100			
021	266464-0	HEX. SOCKET HEAD BOLT M5X20		4	100			
022	141611-3	DUST COVER COMPLETE		1	100			
C10	346614-4	PLATE		1				
023	141608-2	UNDER DRIVER GUIDE COMPLETE		1	*	100		
023-1	142683-1	UNDER DRIVER GUIDE COMPLETE	S	1	100			
024	922212-4	HEX. SOCKET HEAD BOLT M5X12		2	100			
025	234255-7	COMPRESSION SPRING 8		2	100			
026	424138-1	STOP RUBBER		2	155			
027	318902-9	CYLINDER		1	100			
028	324973-6	CYLINDER RING		2	155			
029	922127-5	HEX. SOCKET HEAD BOLT M4X16		4	100			
030	318322-7	CHAMBER TOP		1	155			
031	424139-9	CHAMBER SEAL RING		1	155			
032	318320-1	CHAMBER		1	155			
033	951078-5	SPRING PIN 3-32		2	155			
034	962254-6	RETAINING RING (INT) R-58		1	100			
035	324972-8	PISTON RING		2	155			
036	141606-6	DRIVER COMPLETE		1	100			
037	424137-3	FRONT CUSHION		1	155			
038	265069-3	+PAN HEAD SCREW M4X10		2	100			
039	345985-6	TRIGGER LOCK PLATE		1	155			
040	913904-6	SET SCREW (CUP POINT) M3X4		1	100			
041	241674-0	FAN 60		1	155			
042	213679-0	O-RING 60		1	100			
043	318321-9	CYLINDER HEAD		1	155			
044	213070-2	O RING 10		1	100			
045	162269-5	SPARK PLUG		1	155			
046	233969-5	C COMPRESSION SPRING 12-18		1	100			

Model No. GN420C CORDLESS CONCRETE NAILER

Item	Parts No.	Description	I/C	QTY	N/O	Opt. 1	Opt. 2	NOTE
047	454002-2	MOTOR SLEEVE		1	155			
048	261141-9	EPOXY WASHER 2		1	100			
049	216019-1	STEEL BALL 3		1	100			
050	629860-7	DC MOTOR		1	155			
051	652014-1	PAN HEAD SCREW M4X8		1	100			
052	233969-5	C COMPRESSION SPRING 12-18		1	100			
053	253024-7	FLAT WASHER 10		1	100			
054	962103-7	RETAINING RING R-24		1	155			
055	450730-7	TOP CAP		1	155			
056	257672-4	SLEEVE 5		4	155			
057	941101-4	FLAT WASHER 5		4	100			
058	922242-5	HEX. SOCKET HEAD BOLT M5X25		4	100			
059	450733-1	FILTER COVER		1	155			
060	162270-0	FILTER		1	155			
061	454202-4	ACTUATOR		1	155			
062	454003-0	STEM ADAPTER		1	155			
063	422044-4	RUBBER SLEEVE 9		1	155			
064	324976-0	SHOULDER PIN 4		1	155			
065	187560-0	HANDLE SET		1				
C10	898794-7	CAUTION LABEL		1				
D10		INC. 88						
066	266041-8	TAPPING SCREW 5X25		6	100			
067	265907-9	HEX. SOCKET HEAD BOLT M5X10		1	100			
068	941102-2	FLAT WASHER 5		1	100			
069	266780-0	HEX.SOCKET HEAD SHOULDER BOLT		1	100			
070	188598-8	BATTERY CASE SET		1	155			
D10		INC. 73						
071	643817-4	TERMINAL		1	155			
072	424152-7	RUBBER RING 40		2	155			
073	188598-8	BATTERY CASE SET		1	155			
D10		INC. 70						
074	345749-8	SET PLATE		4	100			
075	324953-2	HOOK		1	155			
076	318338-2	HOOK HOLDER		1	155			
077	252185-0	SQUARE NUT M6		1	100			
078	450740-4	LEAD WIRE COVER		1	155			
079	234113-7	COMPRESSION SPRING 5		1	100			
080	638642-6	SWITCH UNIT		1	155			
081	450736-5	TRIGGER		1	155			
082	141610-5	SWITCH PLATE COMPLETE		1	100			
083	324974-4	CHAMBER LOCK BAR		1	155			
084	265995-6	TAPPING SCREW 4X18		2	100			
085	688131-1	LINE FILTER		1	100			
086	620160-8	LIGHT CIRCUIT		1	100			
087	620159-3	SPARK UNIT		1	100			
088	187560-0	HANDLE SET		1				
C10	898794-7	CAUTION LABEL		1				
D10		INC. 65						

