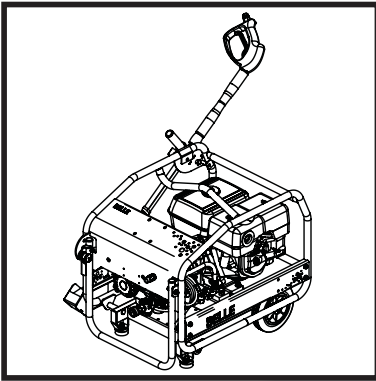




BELLE PWX RANGE

870/60000/1
09/18



GB Operators Manual

4

• Spare Parts Book

14

EC DECLARATION OF CONFORMITY / DÉCLARATION CE DE CONFORMITÉ / DECLARACIÓN DE CONFORMIDAD CE / DECLARAÇÃO CE DE CONFORMIDADE / EG-VERKLARING VAN OVEREENSTEMMING / EF OVERENSSTEMMELSESERKLÆRING



We, **Belle Group Sheen UK, Sheen, Nr. Buxton, Derbyshire, SK17 0EU, GB**, hereby certify that if the product described within this certificate is bought from an authorised Belle Group dealer within the EEC, it conforms to the following EEC directives: 2006/42/CE (This directive replaces directive 98/37/EC), Electromagnetic Compatibility Directive 2004/108/CE (as amended by 89/336/EEC, 92/31/EEC & 93/68 EEC), The Waste Electrical and Electronic Equipment (WEEE) 2002/96/CE, the low voltage directive 2006/95/CE, BS EN ISO 12100-1:2003 Safety of machinery and associated harmonised standards, where applicable. Noise emissions conform to directives 2000/14/EC Annex V & 2005/88/EC
Noise Technical files are held by Ray Neilson at the Belle group Head Office address which is stated above.



Nous soussignés, **Belle Group Sheen UK, Sheen, Nr. Buxton, Derbyshire, SK17 0EU, GB**, certifions que si le produit décrit dans ce certificat est acheté chez un distributeur autorisé Belle Group au sein de la CEE, il est conforme aux normes CEE ci-après: 2006/42/CE (Cette norme remplace la norme 98/37/CE), Norme compatible pour l'électromagnétisme 2004/108/CE (modifiée par 89/336/EEC, 92/31/EEC & 93/68 EEC), Les déchets électriques, et d'équipement électronique 2002/96/CE, caractéristiques basse tension 2006/95/CE, BS EN ISO 12100-1:2003 Norme de sécurité des machines et des critères associés et configurés, si applicable. Les émissions de bruit sont conformes à la directive 2000/14/EC Annex V et 2005/88/EC.
Bruit des fichiers techniques sont détenus par Ray Neilson à l'adresse du groupe Belle Siège qui est indiqué ci-dessus.



La Sociedad, **Belle Group Sheen UK, Sheen, Nr. Buxton, Derbyshire, SK 17 0EU, GB**, por el presente documento certifica que si el producto descrito en este certificado es comprado a un distribuidor autorizado de Belle Group en la CEE, este es conforme a las siguientes directivas: 2006/42/CE de la CEE (Esta directiva sustituye a la Directiva 98/37/CE), Directiva 2004/108/CE sobre Compatibilidad Electromagnética (según enmiendas 89/336/EEC, 92/31/EEC & 93/68 EEC). Los residuos eléctricos y electrónicos (RAEE) 2002/96/CE, Directiva sobre Bajo Voltaje 2006/95/CE, BS EN ISO 12100-1:2003 de Seguridad de Maquinaria y Niveles armonizados estándares asociados donde sean aplicables. Emisión de Ruidos conforme a la Directiva 2000/14/EC Anexo V y 2005/88/EC.
Archivos de ruido técnicos están en manos de Ray Neilson en la dirección del grupo Belle Sede de la que se ha dicho.



O signatário, **Belle Group Sheen UK, Sheen, Nr. Buxton, Derbyshire, SK 0EU, GB**, pelo presente, declara que se o produto descrito neste certificado foi adquirido a um distribuidor autorizado do Belle Group em qualquer país da UE, está em conformidade com o estabelecido nas seguintes diretivas comunitárias: 2006/42/CE (Esta directiva substitui a Directiva 98/37/CE), Directiva de Compatibilidade Electromagnética 2004/108/CE (conforme corrigido pelas 89/336/EEC, 92/31/EEC & 93/68 EEC). O Eléctrico de Desperdício e Equipamento Electrónico (DEEE) 2002/96/CE, a directiva de baixa voltagem 2006/95/CE, BS EN ISO 12100-1:2003 Segurança da maquinaria e às normas harmonizadas afins se aplicáveis. As emissões de ruído respeitam e estão dentro das directivas para máquinas 2000/14/EC Anexo V & 2005/88/EC
Arquivos de ruido técnicos são detidos por Ray Neilson no endereço Escritório Belle grupo Cabeça que é dito acima.



Ondergetekende, **Belle Group Sheen UK, Sheen, Nr. Buxton, Derbyshire, SK17 0EU, GB**, verklaren hierbij dat als het product zoals beschreven in dit certificaat is gekocht van een erkende Belle Group dealer binnen de EEG, het voldoet aan de volgende EEG richtlijnen: 2006/42/CE (Deze richtlijn vervangt Richtlijn 98/37/EC), Electromagnetische Compatibiliteit Richtlijn 2004/108/CE (geamendiseerd door 89/336/EEC, 92/31/EEC & 93/68 EEC). De afgedankte elektrische en elektronische apparatuur (AEEA) 2002/96/CE, de Laagspannings Richtlijn 2006/95/CE, BS EN ISO 12100-1:2003 Veiligheid van Machines en hieraan gekoppelde geharmoniseerde Standaarden, waar deze van toepassing is. Geluidshinder te voldoen aan de richtlijnen 2000/14/EG en 2005/88/EG bijlage V.
Lawaai Technische dossiers zijn in handen van Ray Neilson op de Belle groep hoofdkantoor adres, dat staat boven.



Vi, **Belle Group Sheen UK, Sheen, Nr. Buxton, Derbyshire, SK17 0EU, GB**, erklærer hermed, at hvis det i dette certifikat beskrevne produkt er købt hos en autoriseret Belle Group forhandler i EU, er det i overensstemmelse med følgende EØF-direktiver: 2006/42/CE (Dette direktiv erstatter direktiv 98/37/EF), 2004/108/EØF (som ændret ved 89/336/EEC, 92/31/EØF & 93/68 EØF), Afald af elektrisk og elektronisk udstyr (WEEE) 2002/96/CE, lavspændingsdirektivet 2006/95/CE, BS EN ISO 12100-1:2003 Maskinsikkerhed og tilhørende harmoniserede standarder, hvor det er relevant. Støjemission i overensstemmelse med direktiverne 2000/14/EF bilag V og 2005/88/EF.
Støj Tekniske filer er i besiddelse af Ray Neilson på Belle-gruppen hovedkontoret adresse, som er nævnt ovenfor.

PRODUCT TYPE	TYPE DE PRODUIT.....	TIPO DE PRODUCTO
MODEL.....	MODELE.....	MODELO
SERIAL No.....	N° DE SERIE.....	N° DE SERIE.....
DATE OF MANUFACTURE.....	DATE DE FABRICATION	FECHA DE FABRICACIÓN.....
SOUND POWER LEVEL MEASURED /(GUARANTEED)	NIVEAU DE PUISSANCE SONORE MESUREE /(GARANTIE)	NIVEL DE POTENCIA ACÚSTICA MEDIDO /(GARANTIZADO)
WEIGHT.....	POIDS.....	PESO.....
TIPO DE PRODUCTO.....	PRODUCTTYPE.....	PRODUKTTYPE.....
MODELO.....	MODEL.....	MODEL.....
NO. DE SÉRIE.....	SERIENUMMER.....	SERIENR.....
DATA DE FABRIC.....	FABRICAGEDATUM.....	FREMSTILLINGSDATO.....
NIVEL DE POTÊNCIA DE SOM MEDIDO /(GARANTIDO)	GEMETEN GELUIDSSTERKENIVEAU /(GEGARANDEERD)	LYDEFFEKTNIVEAU MÁLT /(GARANTERET)
PESO.....	GEWICHT.....	VÆGT.....

PWX 08/180 Pressure Washer - Honda Petrol 4.3kW

P081801S

P081801S00001

2017

98dB(A)
101dB(A)

57kg

Signed by:
Signature: 
Medido por:
Assinado por:
Getekend door:
Uunderskrevet af:
Ray Neilson

Managing Director - On behalf of BELLE GROUP (SHEEN) UK.
Le Directeur Général - Pour le compte de la SOCIETE BELLE GROUP (SHEEN) UK.
Director Gerente - En nombre de BELLE GROUP (SHEEN) UK.
Director-Geral - En nome de BELLE GROUP (SHEEN) UK.
Algemeen Directeur - Namens BELLE GROUP (SHEEN) UK.
Administrerende direktør - På vegne af BELLE GROUP (SHEEN) UK.

Place of Declaration - Sheen, Nr. Buxton, Derbyshire, SK17 0EU, UK
Lieu de déclaration - Sheen, Nr. Buxton, Derbyshire, SK17 0EU, UK
Declaración hecha en - Sheen, Nr. Buxton, Derbyshire, SK17 0EU, UK
Lugar de Declaração - Sheen, Nr. Buxton, Derbyshire, SK17 0EU, UK
Plaats van de Verklaring - Sheen, Nr. Buxton, Derbyshire, SK17 0EU, UK
Sted i erklæring - Sheen, Nr. Buxton, Derbyshire, SK17 0EU, UK

Date of Declaration - 2017.....
Date de déclaration - 2017.....
Fecha de la declaración - 2017.....
Data da Declaração - 2017.....
Datum van de verklaring - 2017.....
Dato for erklæringen - 2017.....

**EGKONFORMITÄTSERKLÄRUNG / DICHIARAZIONE CE DI CONFORMITÀ / EG-VERKLARING VAN
OVEREENSTEMMING / EC SAMSVARERKLÆRING / EY-YHDENMUKAISUUSILMOITUS /
DEKLARACJA ZGODNOSCI Z PRZEPISAMI UE**

(D) Wir, **Belle Group Sheen UK, Sheen, Nr. Buxton, Derbyshire, SK17 0EU, GB**, bestätige hiermit, dass, wenn das Produkt innerhalb dieser Bescheinigung ist von einem gekauft zugelassen Belle Group-Händler innerhalb der EWG, so entspricht sie den folgenden EG-Richtlinien: 2006/42/CE (Diese Richtlinie ersetzt die Richtlinie 98/37/EG), elektromagnetische Kompatibilität Richtlinie 2004/108/EG (geändert durch 89/336/EEG, 92/31/EWG und 93/68 EWG). Die Elektro-und Elektronik-Altgeräte (WEEE) 2002/96/CE, der Niederspannungs-Richtlinie 2006/95/CE, BS EN ISO 12100-1:2003
Lärm Technische Dateien werden von Ray Neilson im Belle Group Head Office Adresse, die oben angegeben statt.

(I) Il Gruppo Belle Sheen UK, Sheen, Nr. Buxton, Derbyshire, SK17 0EU, GB, certifica che, se il prodotto descritto nel presente certificato viene acquistato da un rivenditore autorizzato Belle gruppo all'interno della CEE, è conforme alle seguenti direttive CEE: 2006/42/CE (presente direttiva sostituisce la direttiva 98/37/CE), elettromagnetica compatibilità con la direttiva 2004/108/CE (modificata dalla 89/336/CEE, 92/31/CEE e 93/68 CEE). L'Elettrico di Spreco e l'Apparecchiatura Elettronica (WEEE) 2002/96/CE, la direttiva bassa tensione 2006/95/CE, BS EN ISO 12100-1:2003
File rumore tecnici sono tenuti da Ray Neilson all'indirizzo dell'Ufficio gruppo Belle Sede che è riportata sopra.

(S) Undertecknade, **Belle Group Sheen UK, Sheen, Nr. Buxton, Derbyshire, SK17 0EU, Storbritannien**, intygar härmed att om den produkt som beskrivs i detta intyg är köpt från en auktoriserad Belle-återförsäljare inom EEG, överensstämmer med följande EEG-direktiv: 2006/42/CE (Detta direktiv ersätter direktiv 98/37/EG), Elektromagnetisk kompatibilitet 2004/108/CE (ändrad genom direktiv 89/336/EEG, 92/31/EEG och 93/68 EEC). Avfall från elektriska och elektroniska produkter (WEEE) 2002/96/CE, lågsämningsdirektivet 2006/95/CE, BS EN ISO 12100-1:2003
Buller Tekniska filer innehåvs av Ray Neilson på Belle Group Huvudkontor adress som anges ovan.

(NO) Vi, **Belle Group Sheen UK, Sheen, Nr. Buxton, Derbyshire, SK17 0EU, GB**, herved bekræfte at hvis produktet er beskrevet i dette certifikatet er kjøpt fra en autoriseret Belle Group forhandler innenfor EØS, følger det med til følgende EEC direktiver: 2006/42/CE (Dette direktivet erstatter direktiv 98/37/EF). Det elektromagnetisk kompatibilitets-direktiv 2004/108/CE (endret ved 89/336/EEC, 92/31/EEC og 93/68 EEC). Avfall Elektrisk og Elektronisk Utstyr (WEEE) 2002/96/CE, Lavspenningsdirektiv 2006/95/CE, BS EN ISO 12100-1:2003
Støy Tekniske filene holdes av Ray Neilson på Belle gruppen hovedkontor adresse som er angitt ovenfor.

(SF) Me, **Belle Group Sheen UK, Sheen, Nr. Buxton, Derbyshire, SK17 0EU, GB**, todistaa, että jos tuote on kuvattu tämän todistuksen ostetaan valtuutetun Belle jälleenmyyjä ETY: n sisällä, se täyttää seuraavat EY-direktiivien: 2006/42/EY (tällä direktiivillä korvataan direktiivi 98/37/EY), sähkömagneettinen yhteensopivuutta direktiivin 2004/108/CE (muutettuna 89/336/ETY, 92/31/ETY ja 93/68 ETY). Tuhlaa Sähkö ja Sähköinen Varustee (WEEE) 2002/96/CE, the matalajännittdirektiivistä 2006/95/CE, SFS-EN ISO 12100-1:2003
Noise Tekniset tiedostot hallussa Ray Neilson at Belle pääkonttori osoite, joka on edellä.

(PL) My, **Belle Group Sheen UK, Sheen, Nr. Buxton, Derbyshire, SK17 0EU, Wielka Brytania**, niniejszym poświadczamy, iż produkt opisany w tym świadectwie został zakupiony od autoryzowanej Belle Group w UE i jest zgodny z następującymi dyrektywami EU: 2006/42/EY (Niniejsza dyrektywa zastępuje dyrektywę 98/37/EC), Dyrektywa zgodności elektromagnetycznej 2004/108/CE (z poprawkami wniesionymi przez 89/336/EEC, 92/31/EEC & 93/68 EEC). Utylizacja sprzętu elektrycznego i elektronicznego 2002/96/CE, dyrektywę w sprawie niskich napięć 2006/95/CE, BS EN ISO 12100-1:2003
Halas techniczne pliki są przechowywane przez Ray Neilsonem na grupy głowy Belle adres Biura zamieszczonego powyżej.

PRODUKTYP.....	TIPO PRODOTTO	PRODUKTYP.....
MODELL	MODELLO	MODELL.....
SERIENNR.....	SERIE N°	SERIE NR.....
HERSTELLUNGS DATUM	DATA DI FABBRICAZIONE.....	TILVERKNINGS DATUM.....
SCHALLLEISTUNGSPEGEL GEMESSEN /(GARANTIERT)	LIVELLO POTENZA SONORA MISURATA /(GARANTITA)	LJUDSTYRKA UPPMÄTT /(GARANTERAD)
GEWICHT.....	PESO	VIKT.....
PRODUKTYP.....	TUOTETYYPPI.....	TYP PRODUKTO.....
MODELL	MALLI	MODEL.....
SERIE NR	VALMISTUSNRO	Nr SERII.....
PRODUKSIJONSDATO	VALMISTUSPÄIVÄ	DATAPRODUKCI
ÄLYDKRAFTNIVÅ MÅLT /(GARANTERT)	ÄNENVOIMAKKUUDEN TASO MITATTU /(TAATTU)	POZIOM MOCY DŹWIĘKU ZMIERZONY /(GWARANTOWANY)
VEKT.....	MASSA	WAGA



Unterszeichnet von:
Firmat da:
Undertecknat:
Signatur:
Allekirjoitus:
Podpisat:

Ray Neilson

Generaldirektor – Im auftrag von BELLE GROUP (SHEEN) UK.
Amministratore Delegato – Per conto di BELLE GROUP (SHEEN) UK.
V.D. – På vägnar av BELLE GROUP (SHEEN) UK.
Managing Director – På vegne av SOCIETE BELLE GROUP (SHEEN) UK.
Toimitusjohtaja - BELLE GROUP (SHEEN) UK: n puolesta.
Dyrektor Zarządzający – w imieniu BELLE GROUP (SHEEN) UK

Erklärungsart - Sheen, Nr. Buxton, Derbyshire, SK17 0EU, UK	Erklärungsdatum - 2017.....
Luogo de dichiarazione - Sheen, Nr. Buxton, Derbyshire, SK17 0EU, UK	Data de dichiarazione - 2017.....
Plats av Förklaring - Sheen, Nr. Buxton, Derbyshire, SK17 0EU, UK	Datum av Erklaring - 2017.....
Sted av Erklaring - Sheen, Nr. Buxton, Derbyshire, SK17 0EU, UK	Dato av Erklaring - 2017.....
Julistuksen paikka - Sheen, Nr. Buxton, Derbyshire, SK17 0EU, UK	Julistuksen päivämäärä - 2017.....
Miejsce deklaracji - Sheen, Nr. Buxton, Derbyshire, SK17 0EU, UK	Data deklaracji - 2017.....

This manual has been written to help you operate and service the Pressure Washer safely. This manual is intended for dealers and operators of the Pressure Washer.

Foreword

- The **'Environment'** section gives instructions on how to handle the recycling of discarded apparatus in an environmentally friendly way.
- The **'Machine Description'** section helps you to familiarise yourself with the machine's layout and controls.
- The **'General Safety'** and **'Health and Safety'** sections explain how to use the machine to ensure your safety and the safety of the general public.
- The **'Start and Stop Procedure'** helps you with starting and stopping the machine.
- The **'Trouble Shooting Guide'** helps you if you have a problem with your machine.
- The **'Servicing'** section is to help you with the general maintenance and servicing of your machine.
- The **'Warranty'** Section details the nature of the warranty cover and the claims procedure.
- The **'CE certificate'** section shows the standards that the machine has been built to.

Directives with regard to the notations.

Text in this manual to which special attention must be paid are shown in the following way:



CAUTION

The product can be at risk. The machine or yourself can be damaged or injured if procedures are not carried out in the correct way.



WARNING

The life of the operator can be at risk.

WARNING



WARNING

*Before you operate or carry out any maintenance on this machine **YOU MUST READ and STUDY** this manual.*

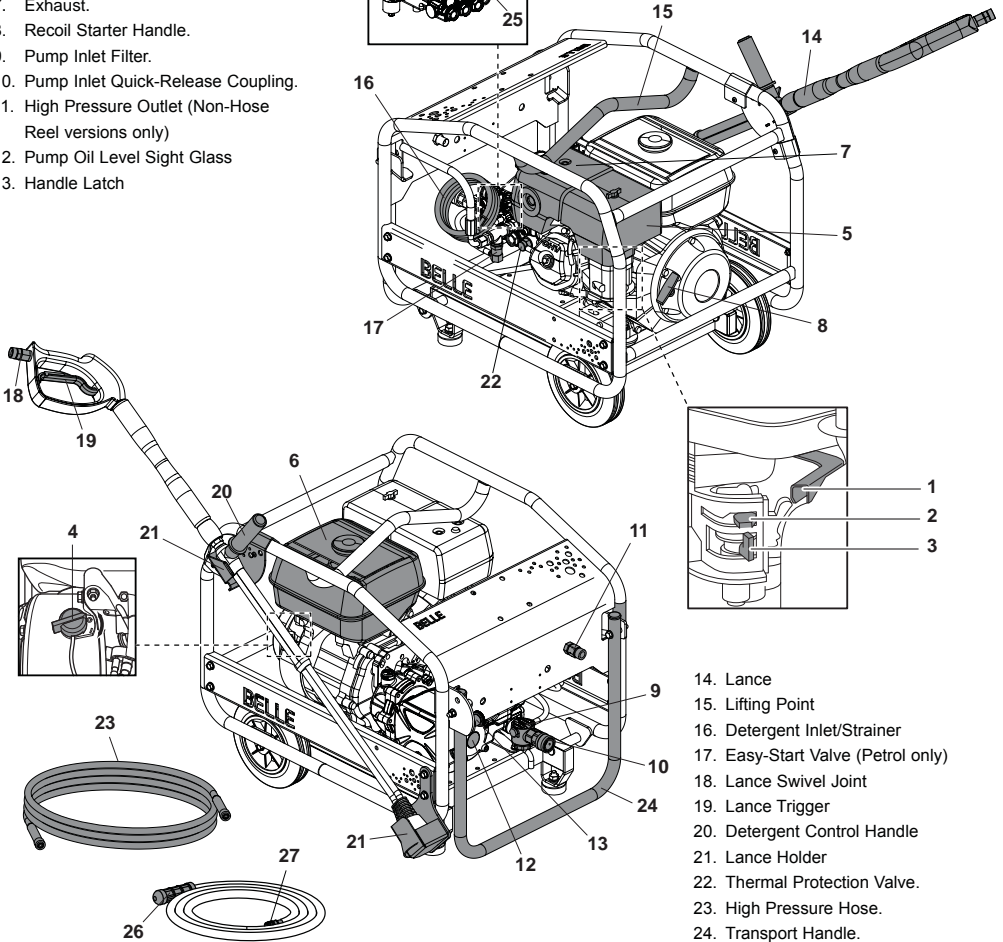
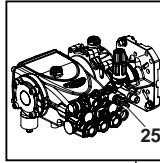
KNOW how to safely use the unit's controls and what you must do for safe maintenance. (NB Be sure that you know how to switch the machine off before you switch on, in case you get into difficulty.)

ALWAYS wear or use the proper safety items required for your personal protection. If you have **ANY QUESTIONS** about the safe use or maintenance of this unit, ASK YOUR SUPERVISOR OR CONTACT: **Altrad Belle (UK): +44 (0) 1298 84606**

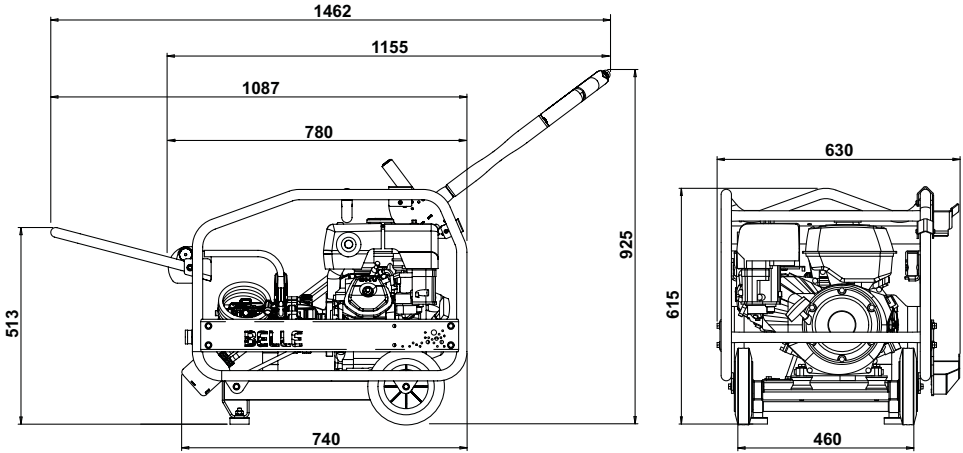
Contents

How to use this manual	4
Warning	4
Machine Description	5
Technical Data	6
Environment	6
Decals.....	7
General Safety	8
Start & Stop Procedure	9
Operating Instructions	10
Service and Maintenance.....	11
Trouble Shooting Guide	11
Warranty	12
C.E. Certificate	2

1. Throttle Lever (Petrol version shown).
2. Choke Lever.
3. Fuel ON / OFF Lever.
4. Engine ON / OFF Switch.
5. Air Filter Housing.
6. Fuel Tank.
7. Exhaust.
8. Recoil Starter Handle.
9. Pump Inlet Filter.
10. Pump Inlet Quick-Release Coupling.
11. High Pressure Outlet (Non-Hose Reel versions only)
12. Pump Oil Level Sight Glass
13. Handle Latch



14. Lance
15. Lifting Point
16. Detergent Inlet/Strainer
17. Easy-Start Valve (Petrol only)
18. Lance Swivel Joint
19. Lance Trigger
20. Detergent Control Handle
21. Lance Holder
22. Thermal Protection Valve.
23. High Pressure Hose.
24. Transport Handle.
25. Detergent Control Valve.
26. Gravity Fed Inlet Strainer.
27. Male Quick-Release Coupling.



Model	PWX 08/180	PWX 13/230	PWX 15/250	PWX 15/250D
Weight (Kg)	57	71	96	136
Engine	Honda GX200	Honda GX270	Honda GX390	Yanmar L100 Electric Start
Engine Power (Hp-kW)	5.8 - 4.3	8.5 - 6.3	11.7 - 8.7	8.9 - 6.6
Engine RPM	3400	3400	3400	3400
Electric Start	No	No	No	Yes
Water Flow (lpm)	8	13	15	15
Max. Water Pressure (bar - psi)	180 - 2600	230 - 3300	250 - 3600	250 - 3600
Fuel Tank Capacity (Ltrs)	3.1	5.3	6.1	5.4
Gearbox Driven Pump	Yes	Yes	Yes	Yes
Sound Power Level (dB(A))	108	109	109	110

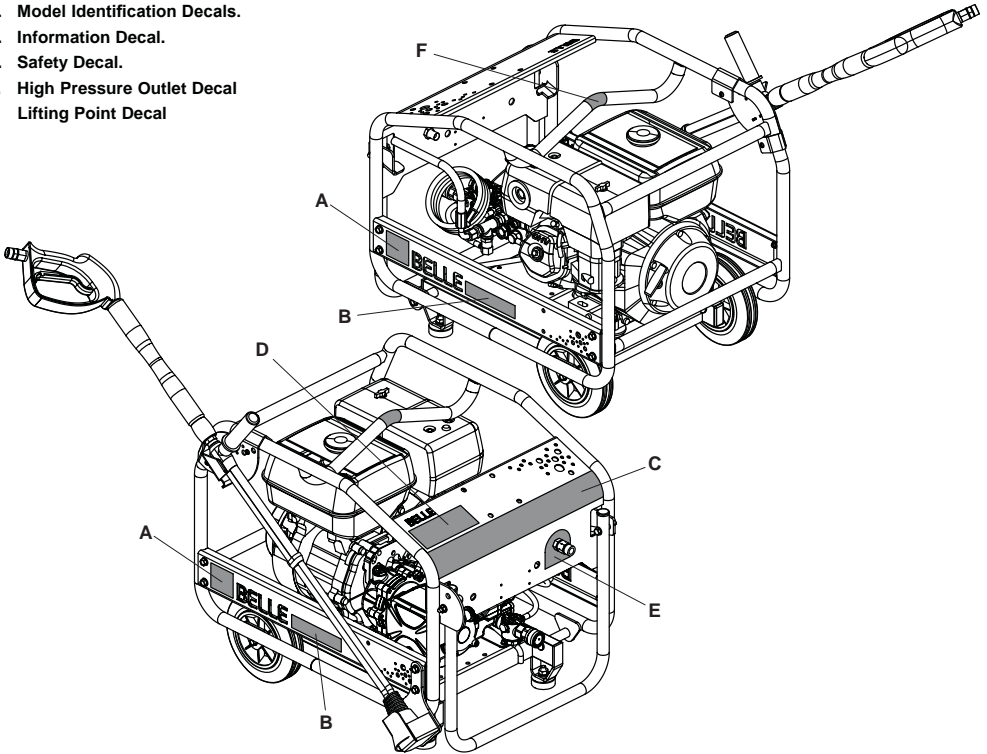
Safe Disposal.



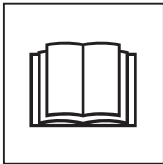
Instructions for the protection of the environment. The machine contains valuable materials. Take the discarded apparatus and accessories to the relevant recycling facilities.

Component	Material
Main Frame	Steel
Chassis	Steel
Lance	Nylon, Stainless Steel & Brass
Engine	Aluminium
Pump	Steel, Aluminium & Brass
Flexible Mounts	Steel and Rubber
Various Parts	Steel and Aluminium

- A. Altrad Logo Decals.
- B. Model Identification Decals.
- C. Information Decal.
- D. Safety Decal.
- E. High Pressure Outlet Decal
- F. Lifting Point Decal



- A. Altrad Logo Decal.
- B. Model Identification Decal - Identifies the model of Pressure Washer.
- C. Information Decal - includes information on the model name, noise level (in dB(A)) and safety symbols which are identified below:-



Please Read
Operators Manual



Wear Protective
Footwear



Wear Ear
Protection



Wear Eye
Protection

- D. Safety Decal - highlights important safety information that must be read before operating the machine.
- E. High Pressure Outlet Decal - highlights the position of the High Pressure Outlet on the machine.
- F. Lifting Point Decal - highlights the position of the Lifting Point.

For your own personal protection and for the safety of those around you, please read and ensure you fully understand the following safety information. It is the responsibility of the operator to ensure that he/she fully understands how to operate this equipment safely. If you are unsure about the safe and correct use of the Pressure Washer, consult your supervisor or Altrad Belle.

BEFORE STARTING THE PRESSURE WASHER



CAUTION

Improper maintenance or use can be hazardous. Read and Understand this section before you perform any maintenance, service or repairs.

- This equipment is heavy and must not be lifted single-handedly. Where possible, please use the integrated wheels to transport the Pressure Washer otherwise **GET HELP** or use suitable lifting equipment on the lifting point.
- Always switch **OFF** the engine before transporting, moving it around the site or servicing it.
- Cordon off the work area and keep members of the public and unauthorised personnel at a safe distance.
- Suitable PPE must be worn when using this equipment and should meet relevant EEC/local standards: waterproof clothing / boots / gloves, safety goggles, helmet or helmet & visor and ear defenders. Tie back long hair and remove any jewellery which may catch in the equipment's moving parts.
- Become familiar with the controls before operating the Pressure Washer and make sure you know how to safely switch this machine **OFF** before you switch it **ON** in case you get into difficulty.
- Never remove or tamper with any guards fitted, they are there for your protection. Always check guards for condition and security, if any are damaged or missing, **DO NOT USE THE PRESSURE WASHER** until the guard has been replaced or repaired.
- **DO NOT** operate the Pressure Washer when you are ill, feeling tired, or when under the influence of alcohol or drugs.
- **ALWAYS** ensure the water pressure is released before starting the engine. This can be done safely by depressing the trigger.
- **ALWAYS** ensure high-pressure hose is connected before starting the engine.
- Replace any worn/damaged decals.
- Remove all packaging material before operating.

WHEN OPERATING THE PRESSURE WASHER

- During use the engine becomes very hot, allow the engine to cool before touching it. Never leave the engine running and unattended.
- **EXHAUST FUMES CAN KILL** - Ensure plenty of ventilation when running petrol/diesel engines in a confined area.
- Place the Pressure Washer at least 3 metres away from buildings and other equipment during operation.
- High pressure jets can be dangerous if misused. The lance must not be aimed at persons, animals, live electrical equipment or the machine itself.
- **DO NOT** run the pump dry for more than 30 secs. This will cause internal damage.
- **DO NOT** leave engine running whilst not in use for long periods. This may cause damage to internal components.
- **DO NOT** use the Pressure Washer on any equipment that is connected to mains electrical supply. **ENSURE** all electrical components are covered and check for water ingress before reconnecting to the mains supply.
- **NEVER** disconnect a hose with pressure in it or allow a hose to be flattened / kinked.
- **ALWAYS** drain water from pump after operating in cold conditions to prevent frost damage.
- **DO NOT** use the Pressure Washer whilst positioned on a laddered. Use a suitable platform or scaffolding.

FUEL SAFETY

- Before refuelling, switch off the engine and allow it to cool.
- When refuelling, **DO NOT** smoke or allow naked flames in the area.
- Refuel in a well ventilated area with the engine switched off. Check for spilled fuel or leaks.
- Spilt fuel must be made safe immediately, using sand. If fuel is spilt on your clothes, change them.
- Store fuel in an approved, purpose made container away from heat and ignition sources.



CAUTION

Fuel is flammable. It may cause injury and property damage. Shut down the engine, extinguish all open flames and do not smoke while filling the fuel tank. Always wipe up any spilled fuel.

SAFETY AND ACCIDENT PROTECTION

Operating Instructions:

All persons who apply, assemble, operate, start, control, maintain or repair this machine must read and understand these operating instructions.

Owner Responsibility:

The owner must ensure that only qualified persons operate, maintain, or repair this machine.

Storage:

When not in use, store in a dry, locked place. Keep away from children.

Transport :

This equipment is heavy and must not be lifted single-handedly. Where possible, please use the integrated wheels to transport the Pressure Washer otherwise **GET HELP** or use suitable lifting equipment on the lifting point.

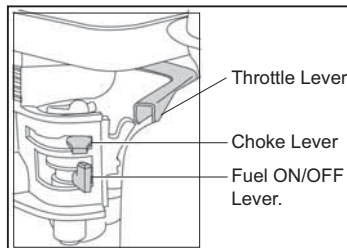
NOTE:- ALWAYS ensure handle is always locked in placed when transporting the machine

STOPPING - HONDA GX200, GX240 & GX390

- Switch **OFF** the loads.
- Switch **OFF** the engine.
- Turn the fuel tap to the **CLOSED** position.

STARTING - HONDA GX200, GX240 & GX390

- Remove all objects placed on, or within one metre of the Pressure Washer.
- Open the fuel tap by moving the fuel **ON / OFF** lever fully to the right.
- If starting the engine from cold, set the choke **ON** by moving the choke lever fully to the left. If restarting a warm engine, the choke is usually not required, however, if the engine has cooled to a degree, partial choke may be required.
- Turn the engine **ON / OFF** switch clockwise to the 'I' position.
- Set the throttle to the idle position by moving the throttle lever fully to the right.
- Taking a firm hold of the frame with one hand, grasp the recoil starter handle with the other. Pull the recoil starter until engine resistance is felt, then let starter return.
- Taking care not to pull the starter's rope fully out, pull the starter handle briskly.
- Repeat until the engine fires.
- Once the engine fires gradually set the choke lever to the **OFF** position by moving it to the right.
- If the engine fails to fire after several attempts, follow the Troubleshooting Guide.
- To stop the engine, set the throttle to idle and turn the engine **ON / OFF** switch anticlockwise to the '0' position.
- Turn the fuel **OFF**



STOPPING - Yanmar L100

- In preparation for stopping the engine, move the throttle lever to LOW position.
- Allow the engine to idle.
- Move the Throttle Lever to STOP position to stop the engine. Then, set the Key Switch to "OFF" position.

STARTING - Yanmar L100 Electric Start

- Insert the key into the key switch.
- Place the throttle into the mid-way position.
- Turn the key clockwise to the START position. Release the key as soon as the engine starts, it will return to the ON position.

STARTING - Yanmar L100 Manual Start

- Grasp the recoil starter handle.
- Pull the handle out slowly until you feel strong resistance.
- Slowly return the recoil starter to the initial position.
- Push the decompression lever down and then release it. The decompression lever will automatically return to the original position when the engine starts.
- Grasp the recoil starter handle.
- Pull the handle all the way out with a strong and even motion. Use two hands if necessary.
- Slowly return the starter handle to the initial position.
- If the engine does not start, repeat the procedure.



CAUTION

The max. engine running speed is pre-set by the manufacturer and must not be adjusted.

**WARNING**

Before you operate or carry out any maintenance on this machine **YOU MUST READ** and **STUDY** this manual.

PRE-OPERATION

- Check your Pressure Washer before use and **IMMEDIATELY** replace any damaged parts.
- Place the Pressure Washer on firm level ground with the engine switched **OFF**.
- Check the engine oil level, low oil levels will result in the engine not starting.
- Check the fuel level.
- This equipment is could emit a Sound Power Level (LWA) of up to 110dB(A). See Technical Data section for more details and wear appropriate ear defenders.
- Your Altrad Belle Pressure Washer comes preset and **NO** adjustment is necessary.
- Be aware of how to stop the Pressure Washer by use of the On/Off switch or throttle lever.

Refer to the engine and pump manuals provided for full pre-operation check.

HOSE CONNECTION - HIGH PRESSURE OUTLET (MACHINE MUST BE TURNED OFF)

- Ensure in-line filters are in good condition and not removed.
- Check condition of the o-rings in the ends of the hose.
- Attach the high pressure hose to the pump connection.
- Attach the lance to opposite ends of the high pressure hose.

**CAUTION**

When connection to temporary / gravity-fed supply, always ensure supply hose is primed with water to ensure pump is not run dry on start-up. Running dry will permanently damage the pump.

OPERATION

- Turn on the water supply.
- Start the engine (see start and stop procedure)
- Aim the lance at the area being cleaned and press the lance trigger.
- Adjust the pressure regulator to obtain required working pressure. **ALWAYS** use on full throttle.

**CAUTION**

The high pressure of water may cause the lance to jolt. Ensure you have a good grip of the lance before operating the pressure washer.

- On completion of the job, stop the engine (see start and stop procedure)
- Turn off the water supply.
- Press the lance trigger to release the pressure within the lance.

**CAUTION**

Always drain water from pump after operating in cold conditions to prevent frost damage.

When Using Detergents

- Set the machine up as for using water.
- Connect the detergent hose to the machine and place the filter end into the detergent supply.
- Loosen detergent control valve.
- Loosen control handle to deliver detergent.
- On completion of the job, flush out the hose and lance with clean water to remove any residual detergent.
- Tighten detergent control valve.
- Tighten control handle.

When Using the Hose Reel

NOTE: When using the pressure washer with a hose reel, the high pressure outlet on the front of the machine becomes redundant. You can use this coupling to attach the hose for storage purposes.

- Pull the securing pin in the side of the hose reel to release the reel. Unravel the hose to the desired length.
- Connect the hose to the lance.
- On completion of the job, remove the hose from the lance and reel the hose back in.
- Connect your hose to the coupling if you desire.

Service and Maintenance



The following schedule details the attentions considered necessary to ensure satisfactory operation of the Pressure Washer.

NOTE- The attentions and periods summarised in the schedule are the initial recommendations and should be revised to suit the Power Unit working conditions. Only authorised dealers should repair the Pressure Washer, and within the requirements of the CE mark (where applicable), where no deviation from the original specification must take place.

Please refer to the Engine Manufacturers instruction leaflet, before attempting any maintenance checks or procedures.

Item	Attention	Daily	6 Months / 500 Hours	Yearly / 1000 Hours
Engine	Check oil level and top up a required	✓		
	Check fuel level and top up a required	✓		
	Drain fuel tank and refill.		✓	
	Oil change	See relevant engine manual		
Hoses	Check connections for leaks or damage.	✓		
	Check condition for damage.	✓		
Pump	Check oil, drain and replace.		✓	
	Replace seals.			✓
Fuel Filter	Replace.		✓	
Water Filter	Clean.		✓	
High Pressure Nozzle	Replace.		✓	

Troubleshooting Guide



Problem	Cause	Remedy
Machine stops suddenly or will not start.	Low oil.	Check and top-up oil.
	Flat battery.	Check / replace battery.
	Blown fuse.	Check / replace fuse.
Sudden pressure loss.	No water supply.	Check supply & filters.
	No chemical supply.	Check chemical reservoir, close valve.
Low pressure.	High pressure nozzle worn	Replace high pressure nozzle.
	Unloader set incorrectly.	Set unloader to correct setting.
Low pressure, machine is noisy and vibrates.	Valves worn or blocked.	Clean / replace as required.
	Piston seals worn.	Replace.
	Pump sucking air.	Check water supply pipe and unions.
Pump will not by-pass.	Non-return valve dirty or jammed.	Clean or replace.
Water drips from pump box.	Pump seals worn.	Replace.
Oil drips from pump bottom.	Oil seal worn.	Replace.
Oil is cloudy.	Water ingress through oil filter plug.	Rinse pump out and replace oil
Water leaks occasionally from underneath the machine.	Pump seals worn.	Water in pump too hot. Release pressure by operating the lance.



Replacement Parts

Contact your nearest Altrad Belle dealer. When ordering replacement parts, please quote the product type, serial number & engine/motor model. Detail the part required in conjunction with the parts list provided, indicating the Page Number, Item Number and quantity required.



Warranty

Your new Altrad Belle Pressure Washer is warranted to the original purchaser for a period of one-year (12 months) from the original date of purchase. The Altrad Belle warranty is against defects in design, materials and workmanship.

The following are not covered under the Altrad Belle warranty:

1. Damage caused by abuse, misuse, dropping or other similar damage caused by or as a result of failure to follow assembly, operation or user maintenance instructions.
2. Alterations, additions or repairs carried out by persons other than Altrad Belle or their recognised agents.
3. Transportation or shipment costs to and from Altrad Belle or their recognised agents, for repair or assessment against a warranty claim, on any machine.
4. Materials and/or labour costs to renew, repair or replace components due to fair wear and tear.

The following components are not covered by warranty.

- Engine air filter
- Engine spark plug
- Nozzles

Altrad Belle and/or their recognised agents, directors, employees or insurers will not be held liable for consequential or other damages, losses or expenses in connection with or by reason of or the inability to use the machine for any purpose.

Warranty Claims

All warranty claims should firstly be directed to Altrad Belle, either by telephone, by Fax, by Email, or in writing.

For warranty claims:

Tel: +44 (0)1298 84606

Fax: +44 (0)1298 84073

Email : Warranty@belle-group.co.uk

Write to:

Altrad Belle Warranty Department,
Sheen, Nr. Buxton,
Derbyshire,
SK17 0EU
England.

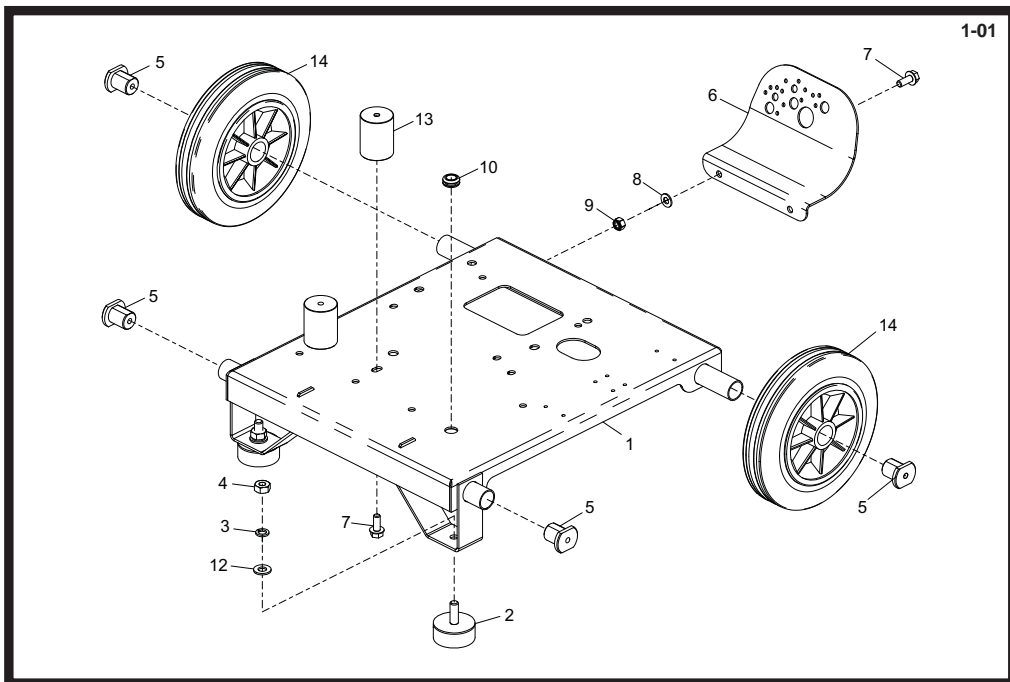
Warranty Registration:

In the bid for ALTRAD Belle to become greener and more eco friendly, we have now introduced online Warranty registration. To access the registration page of our website, please use the following address:-

http://www.bellegroup.com/index.php?p=warranty_registration

Alternatively, please scan the adjacent QR Code (Quick Response Code) using your smartphone to access the registration page.





Chassis Assembly - PWX 08/180

1	02500.....	Chassis.....	1
2	00525-B.....	Foot.....	2
3	4/1003.....	Washer.....	M10 2
4	8/10003.....	Nut.....	M10 2
5	02515.....	Boss.....	4
6	02512.....	Guard.....	1
7	7/8037.....	Screw.....	M8 x 20 4
8	4/8006.....	Washer.....	M8 4
9	8/8008.....	Nut.....	M8 4
10	3/3018.....	Grommett.....	1
11	995/99916.....	Support Bracket.....	1
12	4/1005.....	Washer.....	M10 2
13	60/0285.....	Wheel.....	2
18	995/99935.....	Pump Stand.....	2