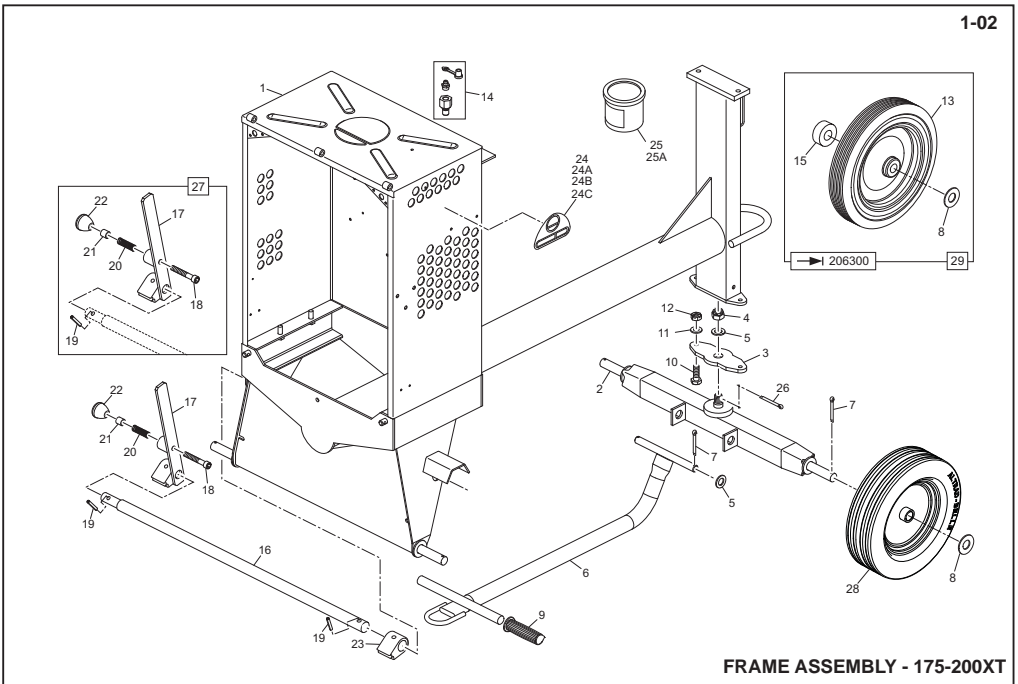


FRAME ASSEMBLY - 100-150XT

Frame Assembly - 100-150XT

- 1 909/11200..... 1 Frame (100/150XT)
- 2 909/12300..... 1 Axle
- 3
- 4 8/20002..... 1 Nut (M20)
- 5 4/2001..... 3 Washer (M20)
- 6 909/11100 1 Towbar
- 7 3/0006..... 6 Split Pin
- 8 4/0009..... 4 Washer (M26)
- 9 XS35 2 Handle Grip
- 10
- 11
- 12
- 13 60/0284..... 4 Wheel
- 14 909/20000..... 1 Grease Nipple Assembly (→ June'04)
- 15 909/99996..... 4 Spacer
- 16 909/17402..... 1 Brake Bar
- 17 909/99998..... 1 Lever
- 18 7/10015..... 1 Screw (M10x65)
- 19 3/0044..... 2 Spirol Pin
- 20 2/0027..... 1 Spring
- 21 909/99997..... 1 Spacer
- 22 74/0001..... 1 Knob
- 23 909/17401..... 1 Brake Cam
- 24 800/23402..... 1 Decal (100XT)
- 24A 800/22702..... 1 Decal (150XT)
- 25 1/0519..... A/R Orange Paint (Tin)
- 25A 1/0507..... A/R Orange Paint (Spray)
- 26 3/0049..... 1 Split Pin
- 27 3/4034..... 1 Cap
- 28 909/99840SP..... 1 Handbrake Lever Kit
- 29 909/99845..... 1 Wheel
- 30 909/30900* 1 Wheel Kit

* Part No. 909/30900 includes 4 of each item.

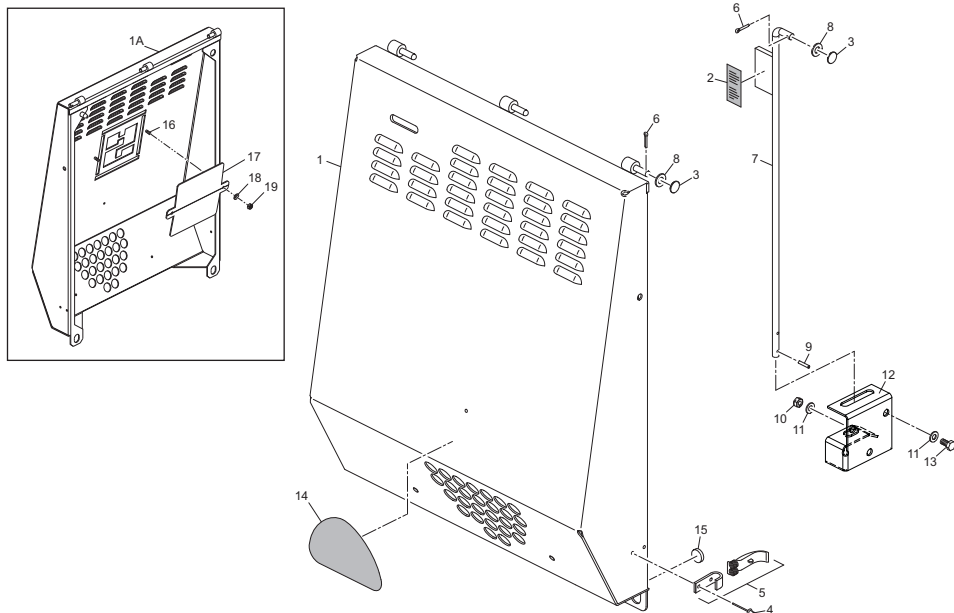


FRAME ASSEMBLY - 175-200XT

Frame Assembly - 175-200XT

- | | | | |
|-----|-------------|-----|-------------------------------------|
| 1 | 909/11600 | 1 | Frame (175/200XT) |
| 2 | 909/12300 | 1 | Axle |
| 3 | 909/99935 | 1 | Plate |
| 4 | 8/20002 | 1 | Nut (M20) |
| 5 | 4/2001 | 3 | Washer (M20) |
| 6 | 909/11100 | 1 | Towbar |
| 7 | 3/0006 | 6 | Split Pin |
| 8 | 4/0009 | 4 | Washer (M26) |
| 9 | XS35 | 2 | Handle Grip |
| 10 | 7/10010 | 2 | Screw (M10x30) |
| 11 | 4/1005 | 2 | Washer (M10) |
| 12 | 8/10001 | 2 | Nut (M10) |
| 13 | 60/0284 | 4 | Wheel |
| 14 | 909/20000 | 1 | Grease Nipple Assembly (↳ June'04) |
| 15 | 909/99996 | 4 | Spacer |
| 16 | 909/17402 | 1 | Brake Bar |
| 17 | 909/99998 | 1 | Lever |
| 18 | 7/10015 | 1 | Screw (M10x65) |
| 19 | 3/0044 | 2 | Spirol Pin |
| 20 | 2/0027 | 1 | Spring |
| 21 | 909/99997 | 1 | Spacer |
| 22 | 74/0001 | 1 | Knob |
| 23 | 909/17401 | 1 | Brake Cam |
| 24 | 800/22802 | 1 | Decal (175XT) |
| 24A | 800/22902 | 1 | Decal (200XT) |
| 25 | 1/0519 | A/R | Orange Paint (Tin) |
| 25A | 1/0507 | A/R | Orange Paint (Spray) |
| 26 | 3/0049 | 1 | Split Pin |
| 27 | 909/99840SP | 1 | Handbrake Lever Kit |
| 28 | 909/99845 | 1 | Wheel |
| 29 | 909/30900* | 1 | Wheel Kit |

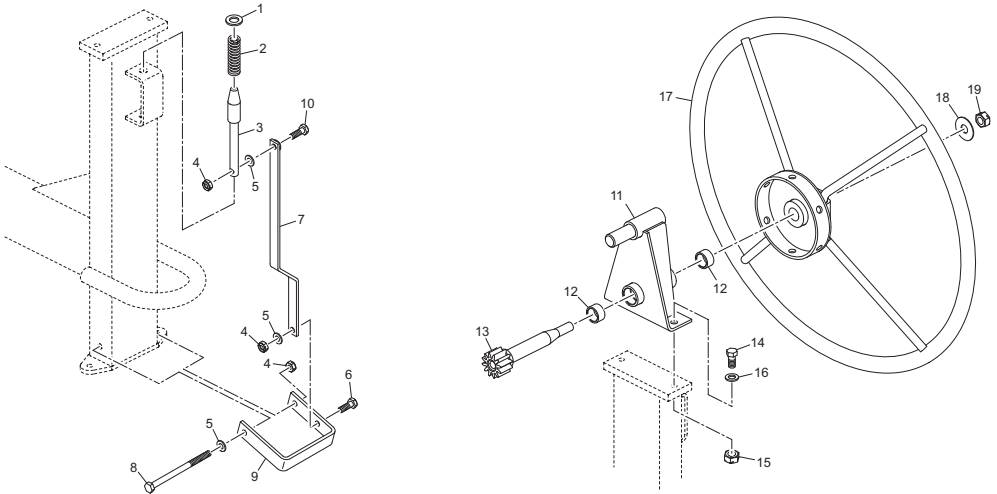
* Part No. 909/30900 includes 4 of each item.



Door Assembly

2-01

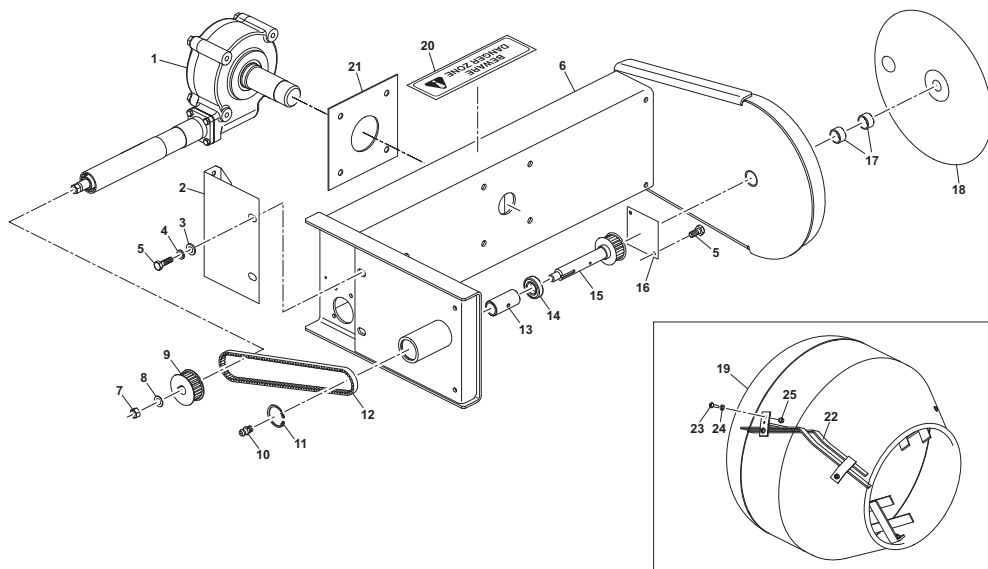
1	909/10400	1	Cover
1A	909/19700	1	Hewden Rear Door Assembly
2	800/99903	1	Decal
3	PS071	2	Cap
4	3/0008	8	Rivet
5	908/10700	2	Catch
6	3/0003	2	Split Pin
7	909/17600	1	Door Stay
8	4/10001	2	Washer (M10)
9	3/0013	2	Spiral Pin
10	8/8002	3	Nut (M8)
11	4/8006	6	Washer (M8)
12	909/99959	1	Bracket
13	7/8008	3	Screw (M8x16)
14	800/23401	1	Decal (100XT)
14	800/22701	1	Decal (150XT)
14	800/22801	1	Decal (175XT)
14	800/22901	1	Decal (200XT)
15	3/3000	2	Pad
16	915/00131	2	Stud
17	909/99806	1	Infil Plate
18	4/8006	2	Washer (M8)
19	8/8002	2	Nut (M8)



Wheel Assembly

3-01

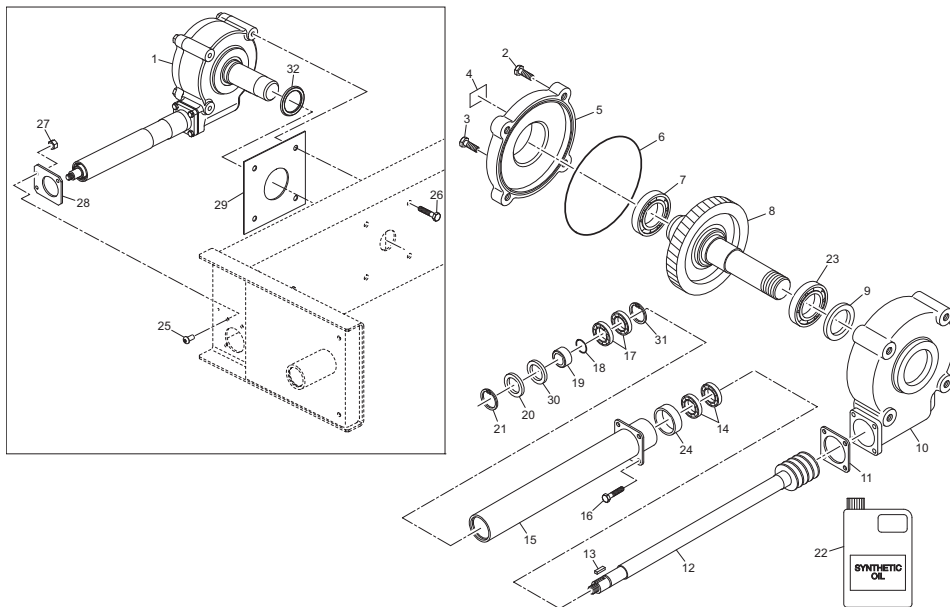
1	4/1601	1	Washer (M16)
2	2/0029	1	Spring
3	909/99910	1	Plunger
4	8/10001	3	Nut (M10)
5	4/1005	7	Washer (M10)
6	7/10010	1	Screw (M10x30)
7	909/99926	1	Plunger Link
8	9/10015	1	Bolt (M10x150)
9	909/99929	1	Foot Pedal
10	9/10004	1	Bolt (M10x35)
11	909/14800	1	Pivot
12	50/000016	2	Composite Bush
13	909/14900	1	Tip Gear
14	7/12013	2	Screw (M12x35)
15	8/12001	2	Nut (M12)
16	4/1204	4	Washer (M12)
17	909/10500	1	Hand Wheel
18	4/1607	1	Washer (M16)
19	8/16003	1	Nut (M16)



Yoke Assembly

4-01

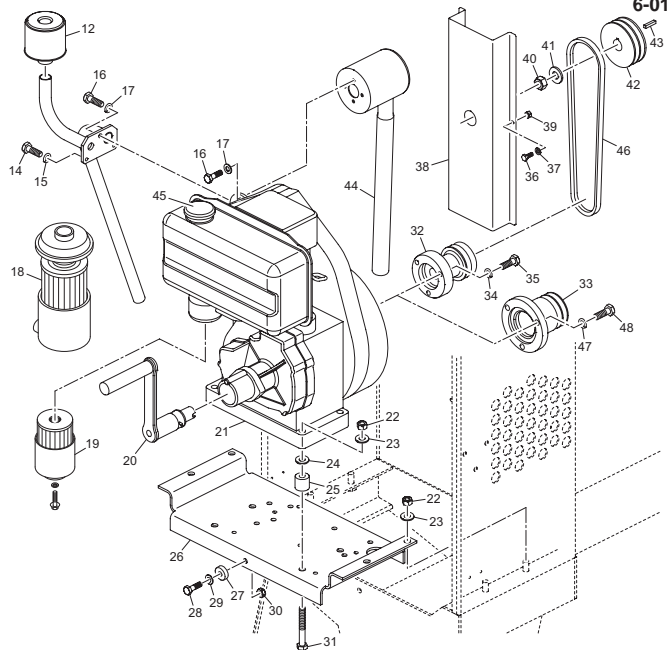
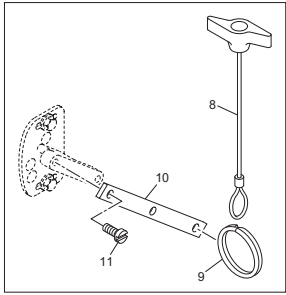
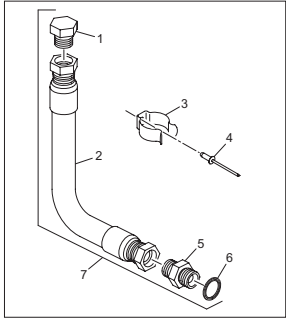
1	☞ 5-01 1 Gearbox
2	909/99942 1 Guard
5	7/6032 5 Screw (M6x12)
6	909/10700 1 Yoke (100/150XT)
6A	909/12200 1 Yoke (175/200XT)
7	8/12003 1 Nut (M12)
8	4/1205 1 Washer (M12)
9	908/15700 1 Pulley (→ May '04)
9A	909/99807 1 Pulley (→ May '04)
10	500/06100 1 Grease Nipple (→ Jan '09)
11	PS022 1 Circlip
12	908/15500 1 Drive Belt (→ May '04)
12A	21/0163 1 Drive Belt (→ May '04)
13	909/30500 1 Layshaft Kit (→ Jan '09)
13A	909/99837 1 Spacer (→ Feb '09)
14	909/30500 2 Bearing (→ Jan '09)
14A	53/0071 2 Bearing (→ Feb '09)
15	909/13100 1 Layshaft (→ May '04)
15A	909/19900 1 Layshaft Kit (→ May '04, → Jan '09)
15B	909/30400 1 Layshaft (→ Feb '09)
16	908/15900 1 Cover
17	50/000016 2 Bush
18	908/21200 1 Cover
19	909/18300 1 Drum (c/w Paddles) (100XT)
19A	909/18400 1 Drum (c/w Paddles) (150XT)
19B	909/18500 1 Drum (c/w Paddles) (175XT)
19C	909/18600 1 Drum (c/w Paddles) (200XT)
20	800/10441 2 Decal Danger Zone
21	☞ 5-01 1 Plate
22	909/19100 1 Paddle Kit (100XT) (→ July '02)
22A	909/19200 3 Paddle Kit (150XT) (→ July '02)
22B	909/19300 3 Paddle Kit (175XT) (→ Oct '02)
22C	909/19400 3 Paddle Kit (200XT) (→ Aug '02)
23	7/12017 9 Screw (M12 x 30)
24	4/1201 9 Washer (M12)
25	8/12001 9 Nut (M12)



Gearbox Assembly

5-01

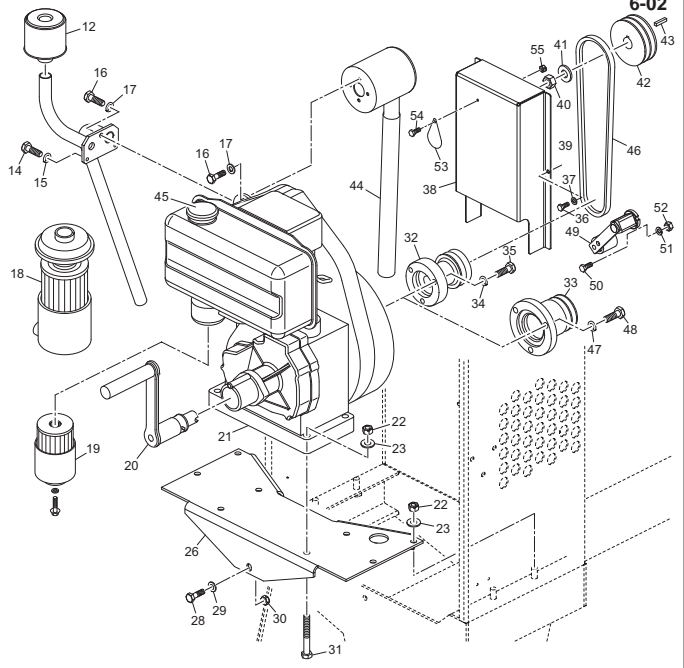
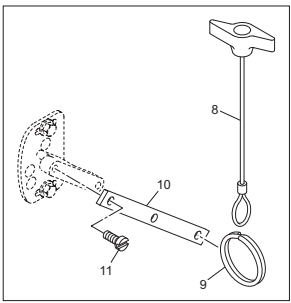
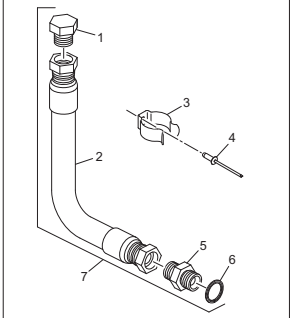
1	909/16100.....1Gearbox Assy (100/150XT) (→ PM40005925)	29	909/99995.....1Plate (→ PM40005925)
1A	909/13000.....1Gearbox Assy (175/200XT) (→ PM40005925)	29	909/99810.....1Plate (→ PM40005926)
1B	909/20300.....1Gearbox Assy (100/150XT) (→ PM40005926)	30	909/12903.....1Spacer
1C	909/20200.....1Gearbox Assy (175/200XT) (→ PM40005926)	31	3/9003.....1Circlip
2	7/12014.....4Bolt (M12x40)	32	5/0067.....1Seal
3	XS01.....1Bung			
4	908/14100.....1Decal			
5	PS111.....1Cover			
6	5/0022.....1Seal			
7	PS002.....1Bearing			
8	909/17300.....1Mainshaft			
9	5/0044.....1Seal			
10	909/13001.....1Case			
11	5/0043.....1Gasket			
12	909/15000.....1Wormshaft (100/150XT)			
12A	909/12800.....1Wormshaft (175/200XT)			
13	908/99901.....1Key			
14	53/0010.....2Bearing			
15	909/15100.....1Tube Carrier (100-150XT)			
15A	909/12900.....1Tube Carrier (175-200XT)			
16	7/8012.....4Bolt (M8x25)			
17	PS013.....2Bearing			
18	5/0015.....1Seal			
19	909/12904.....1Spacer			
20	PS016.....1Seal			
21	MS22.....1Circlip			
22	1/1100.....A/ROil			
23	53/0004.....1Bearing			
24	909/12902.....1Spacer			
25	7/8049.....3Screw (M8x16)			
26	7/12004.....4Bolt (M12x25)			
27	8/8002.....3Nut (M8)			
28	908/16000.....1Plate			



Engine Assembly (Lister → July'02)

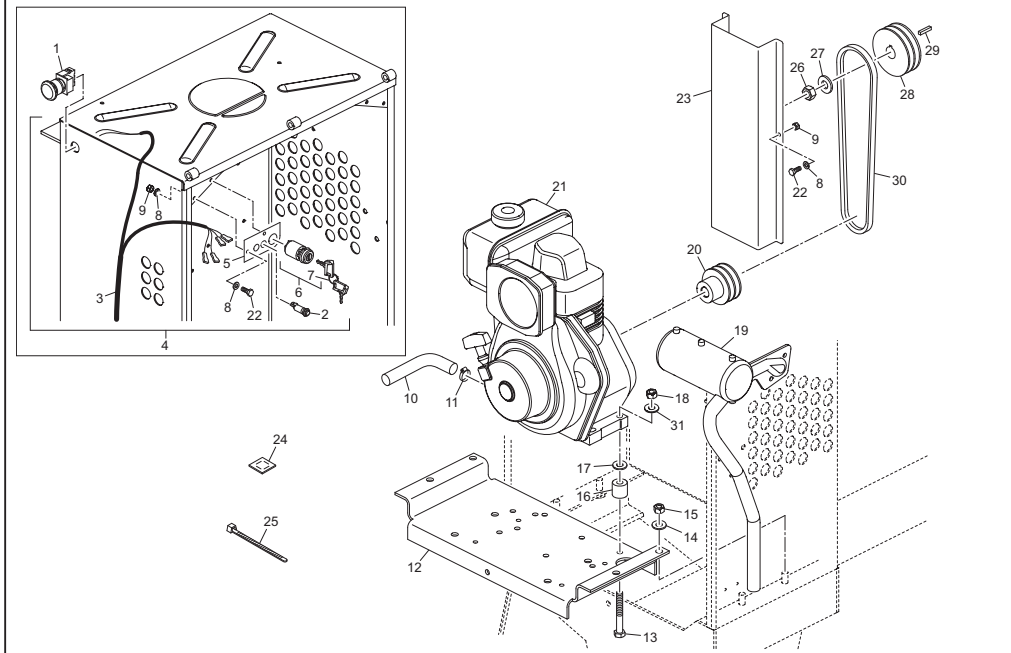
1	6/0003	1	Blank
2	32/0116	1	Hose
3	3/1010	1	Clip
4	3/0043	1	Rivet
5	6/0020	1	Adaptor
6	5/0020	1	Seal
7	39/1220	1	Hose Kit
8	21/0107	1	Stop Cable
9	2/0010	1	Ring
10	908/21800	1	Lever
11	7/4002	2	Screw (M4)
12	PS087	1	Air Filter (Build 32)
13	909/14100	1	Exhaust (Build 32)
14	9/6001	2	Bolt (M6x16)
15	4/6005	2	Washer (M6)
16	7/8008	3	Bolt (M8)
17	4/8003	3	Washer (M8)
18	908/14200	1	Air Filter (Build 10)
19	908/18600	1	Fuel Filter
20	908/22500	1	Handle
21	908/20800	1	Engine (Build 32)
21A	908/20900	1	Engine (Build 10)
22	8/12001	8	Nut
23	4/1205	12	Washer (M12)
24	4/1201	24	Washer (M12) (→ July'02)
25	909/99975	4	Spacer (→ July'02)
26	909/99986	1	Engine Deck (→ July'02)
27	909/99980	1	Spacer (→ July'02)
28	9/10004	1	Bolt (M10x35) (→ July'02)
29	4/1005	2	Washer (M10)
30	8/10001	1	Nut (M10)

31	9/12018	4	Bolt (M12x100) (→ July'02)
32	PS040	1	Pulley (Build 10)
33	PS097	1	Pulley (Build 32)
34	4/1003	3	Washer (M10)
35	9/10009	3	Bolt (M10x45)
36	9/6001	2	Screw (M6x16)
37	4/6001	4	Washer (M6)
38	909/99941	1	Guard (→ July'02)
39	8/6002	2	Nut (M6)
40	8/16002	1	Nut (M16)
41	4/1602	1	Washer (M16)
42	909/99964	1	Pulley
43	909/99968	1	Key
44	909/14400	1	Exhaust (Build 10)
45	908/18700	1	Cap
46	21/0109	2	Belt (A37)
47	4/1202	3	Washer (M12)
48	9/12006	3	Bolt (M12x35)
-	800/21510	A/R	Decal Lister Maintenance
-	800/21531	A/R	Decal Lister Starting
-	800/99916	A/R	Decal Lister Noise



Engine Assembly (Lister (July '02)

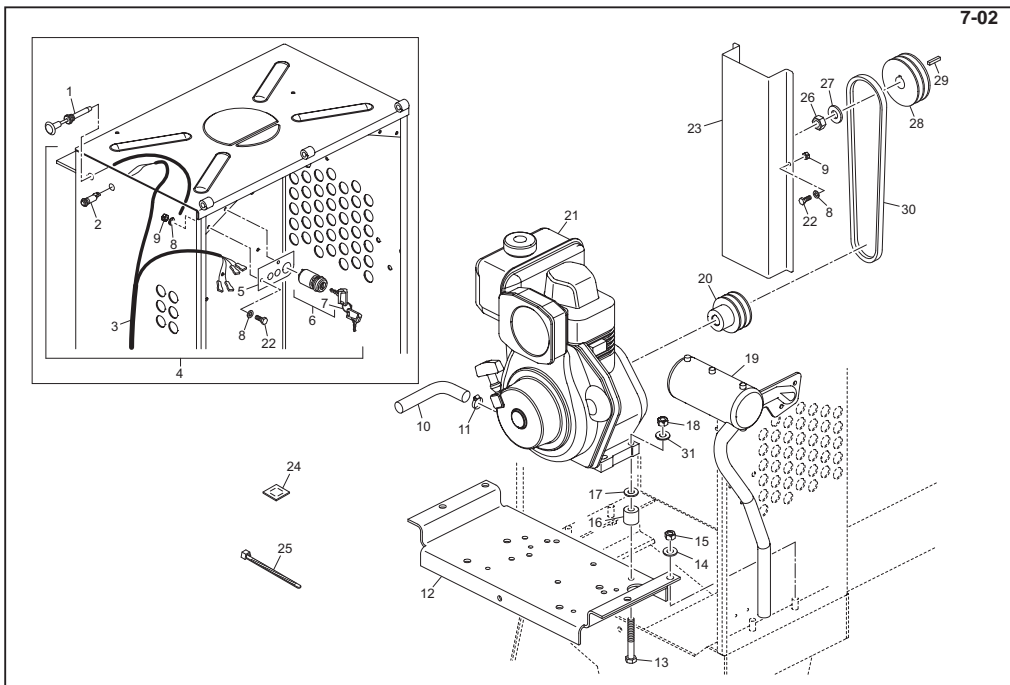
1	6/0003.....1	Blank	31	9/12019.....4	Bolt (M12x55) (July '02)
2	32/0116.....1	Hose	32	PS040.....1	Pulley (Build 10)
3	3/0008.....1	Clip	33	PS097.....1	Pulley (Build 32)
4	3/0043.....1	Rivet	34	4/1003.....3	Washer (M10)
5	6/0020.....1	Adaptor	35	9/10009.....3	Bolt (M10x45)
6	5/0020.....1	Seal	36	9/6001.....2	Screw (M6x16)
7	39/1220.....1	Hose Kit	37	4/6001.....4	Washer (M6)
8	21/0107.....1	Stop Cable	38	909/99802.....1	Guard (Build 10) (July '02)
9	2/0010.....1	Ring		909/99903.....1	Guard (Build 32) (July '02)
10	908/21800.....1	Lever	39	8/6002.....2	Nut (M6)
11	7/4002.....2	Screw (M4)	40	8/16002.....1	Nut (M16)
12	PS087.....1	Air Filter (Build 32)	41	4/1602.....1	Washer (M16)
13	909/14100.....1	Exhaust (Build 32)	42	909/99964.....1	Pulley
14	9/6001.....2	Bolt (M6x16)	43	909/99968.....1	Key
15	4/6005.....2	Washer (M6)	44	909/14400.....1	Exhaust (Build 10)
16	7/8008.....3	Bolt (M8)	45	908/18700.....1	Cap
17	4/8003.....3	Washer (M8)	46	21/0109.....2	Belt (A37)
18	908/14200.....1	Air Filter (Build 10)	47	4/1202.....3	Washer (M12)
19	908/18600.....1	Fuel Filter	48	9/12006.....3	Bolt (M12x35)
20	908/22500.....1	Handle	49	909/99999.....1	Jockey Belt Tensioner (July '02)
21	908/20800.....1	Engine (Build 32)	50	7/5020.....1	Screw (M5x10) (July '02)
21A	908/20900.....1	Engine (Build 10)	51	4/5002.....1	Washer (M5) (July '02)
22	8/12001.....8	Nut	52	5/5002.....1	Nut (M5) (July '02)
23	4/1205.....12	Washer (M12)	53	909/99819.....1	Swing Plate (Jan '09)
24			54	7/5002.....1	Screw (M5 x 12) (Feb '09)
25			55	8/5003.....1	Nut (M5)
26	909/99991.....1	Engine Deck (July '02)	-	800/21510.....A/R	Decal Lister Maintenance
27			-	800/21531.....A/R	Decal Lister Starting
28	9/10005.....1	Bolt (M10x25) (July '02)	-	800/99916.....A/R	Decal Lister Noise
29	4/1005.....2	Washer (M10)			
30	8/10001.....1	Nut (M10)			



Engine Assembly (Yanmar → Oct'01)

7-01

1	70/0049 1	Emergency Stop Button (→ Oct'01)	31	4/1005 4	Washer (M10)
2	70/0012 1	Indicator Red	-	800/10420 A/R	Decal Hot Parts
3	71/0167 1	Harness (Stop/Start) (→ Oct'01)	-	800/21512 A/R	Decal Yanmar Maintenance
4	71/0157 1	Harness Assy (Complete) (→ Oct'01)	-	800/21520 A/R	Decal Charge Light
5	909/99972 1	Ignition Switch Plate	-	800/21530 A/R	Decal Yanmar Starting (→ Oct'01)
6	70/0184 1	Ignition Switch (C/W Keys)	-	800/99916 A/R	Decal Yanmar Noise
7	70/0185 1	Ignition Keys	-	800/99916 1	Decal Motor Noise
8	4/6001 8	Washer (M6)				
9	8/6002 4	Nut (M6)				
10	31/0105 1	Drain Hose				
11	200/08400 1	Jubilee Clip				
12	909/99986 1	Engine Deck				
13	9/10011 4	Bolt (M10x50)				
14	4/1204 4	Washer (M12)				
15	8/12001 4	Nut (M12)				
16	909/99976 4	Spacer				
17	4/1001 24	Washer (M10)				
18	8/10001 4	Nut (M10)				
19	909/14300 1	Exhaust				
20	909/99970 1	Pulley				
21	20/0023 1	Engine Yanmar L40 ARE-BE (→ Oct'01)				
22	9/6001 4	Screw (M6x16)				
23	909/99941 1	Guard				
24	900/99903 A/R	Pad				
25	1/0005 A/R	Cable Tie				
26	8/16002 1	Nut (M16)				
27	4/1602 1	Washer (M16)				
28	909/99964 1	Pulley				
29	909/99968 1	Key				
30	21/0110 2	Belt (A36)				

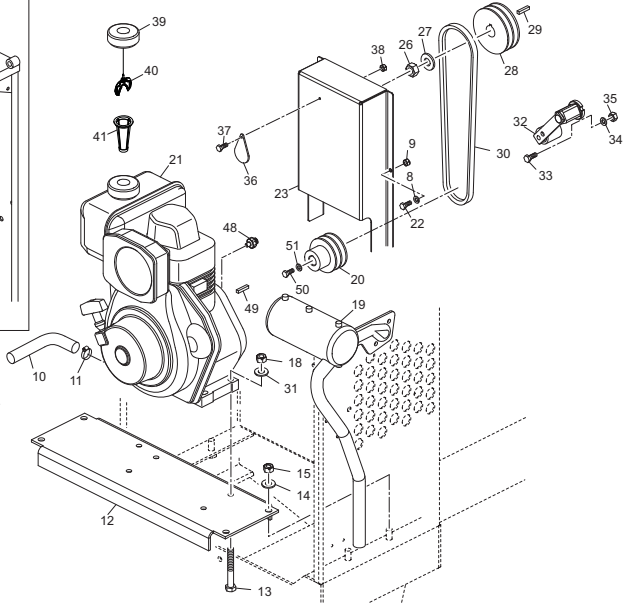
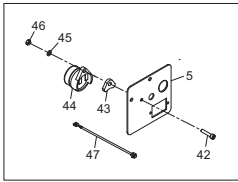
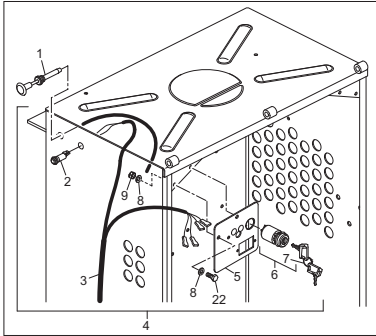

Engine Assembly (Yanmar) (→ Oct'01 → July'02)

7-02

1	21/01141Emergency Stop & Cable Assy (→ Oct'01)	31	4/10054Washer (M10)
2	70/00121Indicator Red	-	800/10420A/RDecal Hot Parts
3	71/01741Harness (Stop/Start) (→ Oct'01)	-	800/21512A/RDecal Yanmar Maintenance
4	71/01731Harness Assy (Complete) (→ Oct'01)	-	800/21520A/RDecal Charge Light
5	909/999721Ignition Switch Plate	-	800/21534A/RDecal Yanmar Starting (→ Oct'01)
6	70/01841Ignition Switch (C/W Keys)	-	800/99916A/RDecal Yanmar Noise
7	70/01851Ignition Keys				
8	4/60018Washer (M6) (→ July'02)				
9	8/60024Nut (M6) (→ July'02)				
10	31/01051Drain Hose				
11	200/084001Jubilee Clip				
12	909/999861Engine Deck (→ July'02)				
13	9/100114Bolt (M10x50) (→ July'02)				
14	4/12044Washer (M12)				
15	8/120014Nut (M12)				
16	909/999764Spacer (→ July'02)				
17	4/100124Washer (M10) (→ July'02)				
18	8/100014Nut (M10)				
19	909/143001Exhaust				
20	909/999701Pulley				
21	20/00241Engine YanmarL40 ARE-BE-BE2 (→ Oct'01)				
22	9/60014Screw (M6x16) (→ July'02)				
23	909/999411Guard (→ July'02)				
24	900/99903A/RPad				
25	1/0005A/RCable Tie				
26	8/160021Nut (M16)				
27	4/16021Washer (M16)				
28	909/999641Pulley				
29	909/999681Key				
30	21/01102Belt (A36) (→ July'02)				

Engine Assembly (Yanmar → July '02)

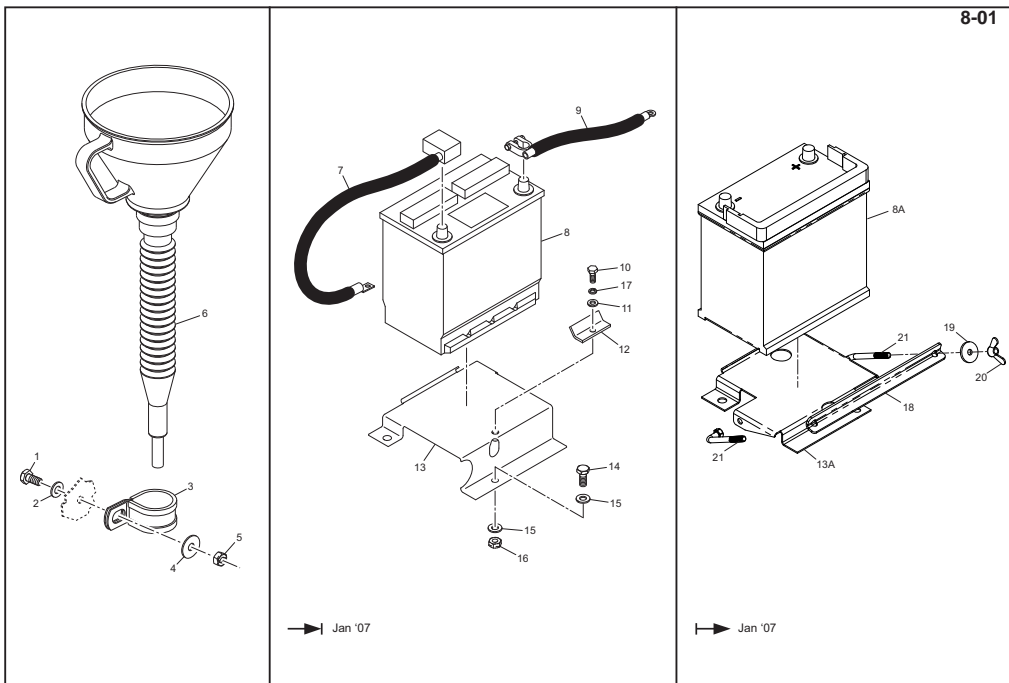
7-03



Engine Assembly (Yanmar → July '02)

7-03

1	21/0114	1	Emergency Stop & Cable Assy	37	7/5002	1	Screw (M5 x 12) (→ Feb '09)
2	70/0012	1	Indicator Red	38	8/5003	1	Nut (M5)
3	71/0174	1	Harness (Stop/Start)	39	21/0411	1	Fuel Cap
4	71/0173	1	Harness Assy (Complete)	40	21/0410	1	Fuel Cap 'R' Chain
5	909/99945	1	Ignition Switch Plate	41	21/0412	1	Fuel Filter
6	70/0184	1	Ignition Switch (C/W Keys)	42	7/5021	1	Screw (M5 x 25)
7	70/0185	1	Ignition Key Kit (→ Dec '15)	43	909/99844	1	Spacer
8	21/0229	1	Ignition Keys (→ Jan '16)	44	70/0267	1	Buzzer
9	4/6001	10	Washer (M6) (→ July '02)	45	4/5002	1	Washer (M5)
9	8/6002	5	Nut (M6) (→ July '02)	46	8/5002	1	Nut (M5)
10	31/0105	1	Drain Hose	47	71/0296	1	Switch Cable Extension
11	200/08400	1	Jubilee Clip	48	21/0409	1	Oil Pressure Switch
12	909/99992	1	Engine Deck (→ July '02)	49	22512-050140	1	Key
13	9/10005	4	Bolt (M10x45) (→ July '02)	50	7/8012	1	Screw (M8 x 25)
14	4/1204	4	Washer (M12)	51	4/8006	1	Washer (M8)
15	8/12001	4	Nut (M12)				
16							
17							
18	8/10001	4	Nut (M10)				
19	909/14300	1	Exhaust				
20	909/99970	1	Pulley				
21	20/0024	1	Engine Yanmar L48 ARE-SE				
22	9/6001	5	Screw (M6x16) (→ July '02)				
23	909/99801	1	Guard (→ July '02)				
24	900/99903	1	A/R Pad				
25	1/0005	1	A/R Cable Tie				
26	8/16002	1	Nut (M16)				
27	4/1602	1	Washer (M16)				
28	909/99964	1	Pulley				
29	909/99968	1	Key				
30	21/0117	2	Belt (A35.5) (→ July '02)				
31	4/1005	4	Washer (M10)				
32	909/99999	1	Jockey (Belt Tensioner) (→ July '02)				
33	7/5020	1	Screw (M5x10) (→ July '02)				
34	8/5002	1	Nut (M5) (→ July '02)				
35	4/5002	1	Washer (M5) (→ July '02)				
36	909/99819	1	Swing Plate (→ Jan '09)				



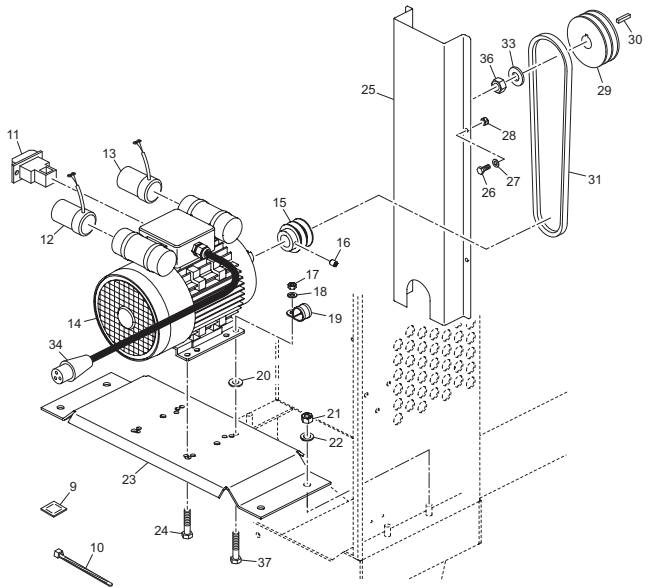
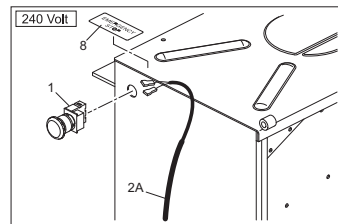
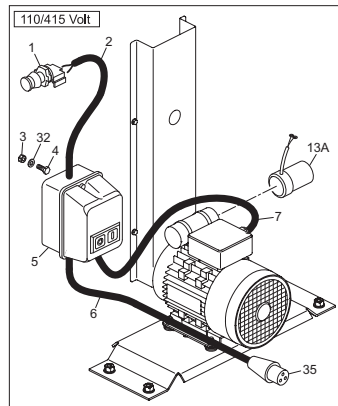
Funnel Assembly / Battery Assembly

8-01

1	7/8008.....1	Bolt (M8x16)
2	4/8006.....1	Washer (M8)
3	200/06560.....1	P-Clip
4	4/8008.....1	Washer (5/16")
5	8/8002.....1	Nut (M8)
6	92/99901.....1	Funnel
7	140/05500.....1	Cable (Positive)
8	909/99818.....1	Kit Battery (→ Jan '07)
8A	100/05300.....1	Battery (→ Jan '07)
9	140/05100.....1	Cable (Earth)
10	7/8011.....1	(M8x20)
11	4/8006.....1	Washer (M8)
12	909/99949.....1	Clamp
13	909/15800.....1	Battery Deck (→ July '02)
13	909/99817.....1	Kit Battery Deck (→ Jan '07)
13A	909/99816.....1	Battery Deck (→ Jan '07)
14	7/10005.....1	Bolt (M10x25)
15	4/1005.....2	Washer (M10)
16	8/10001.....1	Nut (M10)
17	4/8003.....1	Washer Spring (M8)
18	909/99814.....1	Clamp Battery
19	05.3.062.....2	Washer (Dia 30 x 3.3)
20	8/8012.....2	Wing Nut (M8)
21	909/99815.....2	Pivot Clamp

Motor Assembly (→ July'02)

9-01



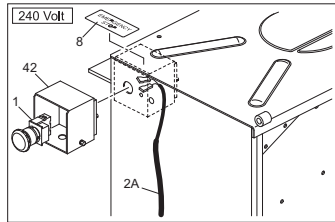
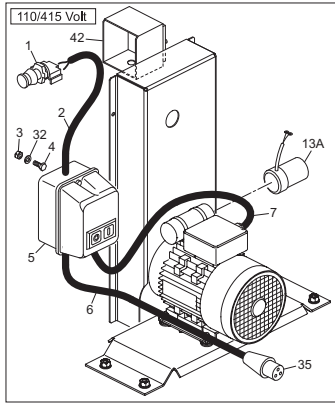
Motor Assembly (→ July'02)

9-01

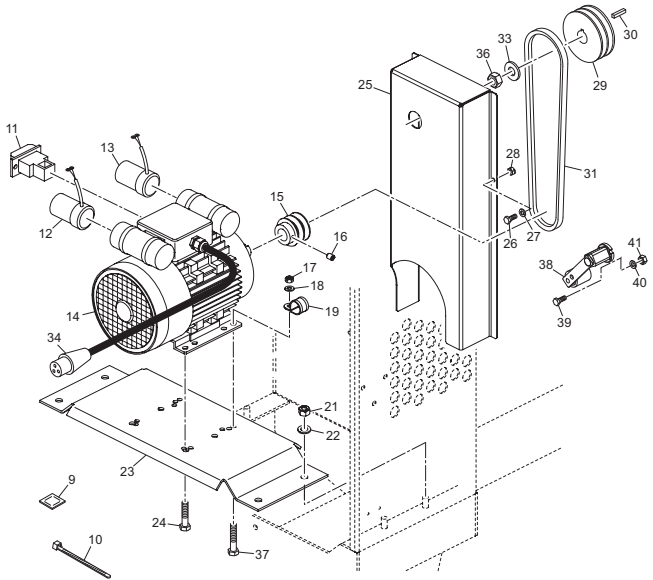
1	70/00491Switch Emergency Stop	28	8/60024Nut (M6) (→ July'02)
2	71/01591Harness Emergency Stop (110V / 415V)	29	909/999641Pulley
2A	71/01721Harness Emergency Stop (240V)	30	909/999681Key
3	8/40042Nut (M4)	31	21/01092Belt (A37) (→ July'02)
4	9/40012Bolt (M4x12)	32	4/40012Washer
5	908/220001Switchbox (110V)	33	4/16021Washer (M16)
5A	908/200001Switchbox (415V)	34	918/285001Plug (240V 16 amp)
6	71/01601Harness Power (c/w 110V 32Amp Plug)	35	918/301001Plug (110V 32 amp)
		(→ 205958)	35A	70/01891Plug (415V 32 amp)
6	71/02931Harness Power (c/w 110V 32Amp Plug)	36	8/160021Nut (M16)
		(→ 205959)	37	9/80031Bolt (M8x35) (→ July'02)
6A	71/01651Harness Power (c/w 415V 32Amp Plug)	38	909/204001Replacement Motor Kit (110V)
7	71/01611Harness Motor (110V)	38A	909/206001Replacement Motor Kit (240V)
7A	71/01661Harness Motor (415V)	-	800/215131Decal Motor Maintenance
8	800/999341Decal Emergency Stop	-	800/215331Decal Motor Start Up
9	900/99903A/RPad				
10	1/0005A/RCable Tie				
11	70/00441Switch				
12	70/00431Run Capacitor (240V)				
13	70/00421Start Capacitor (240V)				
13A	70/01871Start Capacitor (110V)				
14	⊕ 381Motor (110V)				
14A	⊕ 38A1Motor (240V)				
14B	908/199001Motor (415V)				
15	908/148001Pulley				
16	7/80061Screw (M8x10)				
17	8/80024Nut (M8)				
18	4/80064Washer (M8)				
19	900/102001P-Clip				
20	4/800824Washer (M8) (→ July'02)				
21	8/120014Nut (M12)				
22	4/120044Washer (M12)				
23	909/999371Motor Deck				
24	9/80083Bolt (M8x30) (→ July'02)				
25	909/999401Guard				
26	9/60014Screw (M6x16) (→ July'02)				
27	4/60018Washer (M6) (→ July'02)				

Motor Assembly (→ July'02, → Mar'06)

9-02



Item 42, should only be fitted by a qualified electrician.



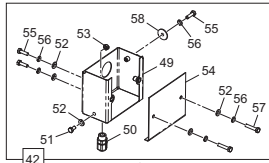
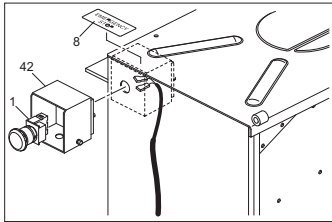
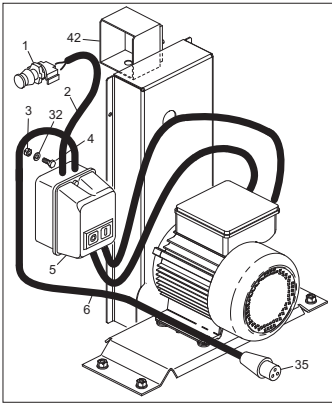
Motor Assembly (→ July'02, → Mar'06)

9-02

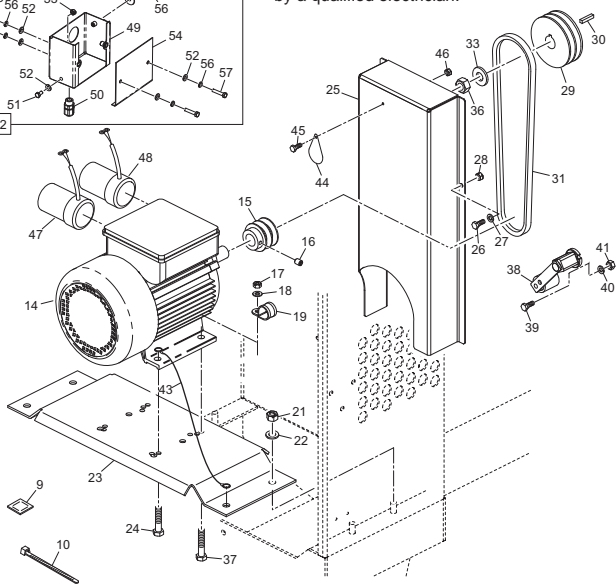
1	70/00491Switch Emergency Stop	28	8/60024Nut (M6)
2	71/01591Harness Emergency Stop (110V / 415V)	29	909/999641Pulley
2A	71/01721Harness Emergency Stop (240V)	30	909/999682Key
3	8/40042Nut (M4)	31	21/01112Belt (A38) (→ July'02)
4	9/40012Bolt (M4x12)	32	4/40012Washer
5	908/220001Switchbox (110V)	33	4/16021Washer (M16)
5A	908/200001Switchbox (415V)	34	918/285001Plug (240V 16 amp)
6	71/01601Harness Power (c/w 110V 32Amp Plug)	35	918/301001Plug (110V 32 amp)
		(→ I205958)	35A	70/01891Plug (415V 32 amp)
6	71/02931Harness Power (c/w 110V 32Amp Plug)	36	8/160021Nut (M16)
		(→ I205959)	37	244Bolt (M10x25) (→ July'02)
6A	71/01651Harness Power (c/w 415V 32Amp Plug)	38	909/999991Jockey (Belt Tensioner) (→ July'02)
7	71/01611Harness Motor (110V)	39	7/50201Screw (M5x10) (→ July'02)
7A	71/01661Harness Motor (415V)	40	8/50021Nut (M5) (→ July'02)
8	800/999341Decal Emergency Stop	41	4/50021Washer (M5) (→ July'02)
9	900/99903A/RPad	42	909/201001Emergency Stop Cover Kit (→ March'04)
10	1/0005A/RCable Tie	43	909/204001Replacement Motor Kit (110V)
11	70/00441Switch	43A	909/206001Replacement Motor Kit (240V)
12	70/00431Run Capacitor (240V)	-	800/215131Decal Motor Maintenance
13	70/00421Start Capacitor (240V)	-	800/215331Decal Motor Start Up
13A	70/01871Start Capacitor (110V)	-	800/999161Decal Motor Noise
14	431Motor (110V)				
14A	43A1Motor (240V)				
14B	908/199001Motor (415V)				
15	908/148001Pulley				
16	7/80061Screw (M8x10)				
17	8/100014Nut (M10) (July'02)				
18	4/10058Washer (M10) (July'02)				
19	900/102001P-Clip				
20	4/800824Washer (M8)				
21	8/120014Nut (M12)				
22	4/120044Washer (M12)				
23	909/999371Motor Deck				
24	7/100054Bolt (M10x25) (→ July'02)				
25	909/998041Guard (→ July'02)				
26	9/60014Screw (M6x16)				
27	4/60018Washer (M6)				

Motor Assembly (→ Apr'06)

9-03



Item 42, should only be fitted by a qualified electrician.

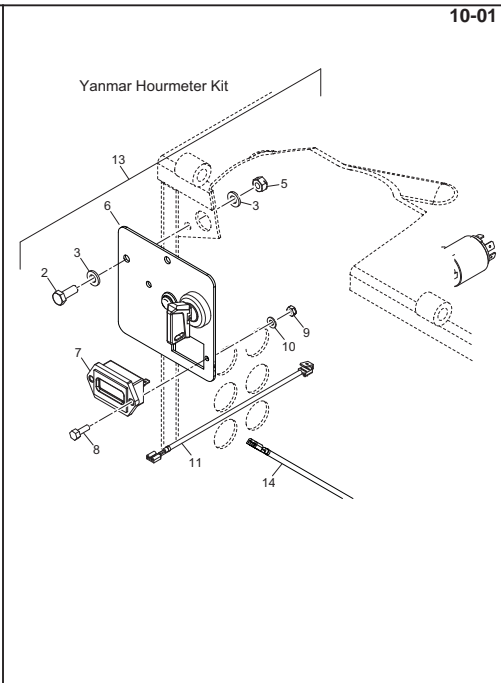
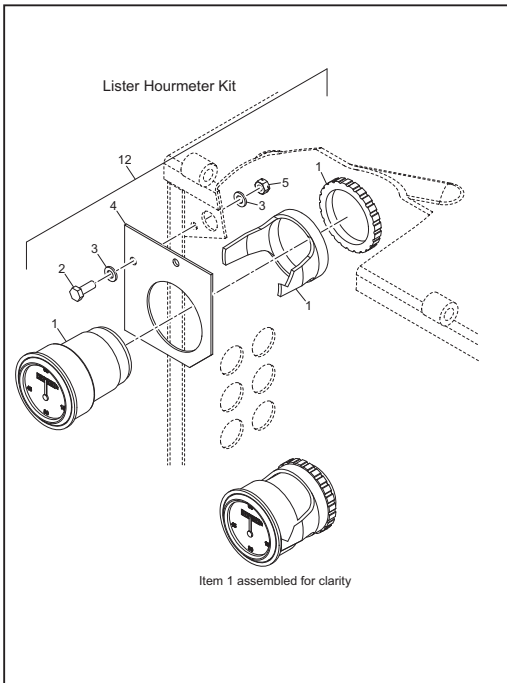


Motor Assembly (→ Apr'06)

9-03

1	70/00491Switch Emergency Stop
2	71/02511Harness Emergency Stop
3	8/40042Nut (M4)
4	9/40012Bolt (M4x12)
5	909/307001Switchbox (110V) (→ 202749)
5A	70/02651Switchbox (110V) (→ 202750)
5B	908/200001Switchbox (415V)
5C	909/308001Switchbox (230V) (→ 202749)
5D	70/02631Switchbox (230V) (→ 202750)
6	71/01601Harness Power (c/w 110V 32Amp Plug) (→ 205958)
6	71/02931Harness Power (c/w 110V 32Amp Plug) (→ 205959)
6A	71/01651Harness Power (c/w 415V 32Amp Plug)
6B	71/02521Harness Power (c/w 230V 16Amp Plug) (→ 205434)
6B	71/02941Harness Power (c/w 230V 16Amp Plug) (→ 205435)
8	800/999341Decal Emergency Stop
9	900/99903A/RPad
10	1/0005A/RCable Tie
14	20/00781Motor (110V)
14A	20/00791Motor (240V)
14B	908/199001Motor (415V)
15	908/148001Pulley
16	7/80061Screw (M8x10)
17	8/100014Nut (M10)
18	4/10058Washer (M10)
19	900/102001P-Clip
20	4/800824Washer (M8)
21	8/120014Nut (M12)
22	4/120044Washer (M12)
23	909/999371Motor Deck
24	7/100054Bolt (M10x25)
25	909/998041Guard
26	9/60014Screw (M6x16)
27	4/60018Washer (M6)
28	8/60024Nut (M6)
29	909/999641Pulley

30	909/999681Key
31	21/01112Belt (A38)
32	4/40012Washer
33	4/16021Washer (M16)
35	918/301001Plug (110V 32 amp)
35A	70/01891Plug (415V 32 amp)
35B	918/285001Plug (240V 16 amp)
36	8/160021Nut (M16)
38	909/999991Jockey (Belt Tensioner)
39	7/50201Screw (M5x10)
40	8/50021Nut (M5)
41	4/50021Washer (M5)
42	909/201001Emergency Stop Cover Kit
43	71/02491Earth Cable
44	909/998191Swing Plate (→ Jan '09)
45	7/50021Screw (M5 x 12) (→ Feb '09)
46	8/50031Nut (M5)
47	70/02441Capacitor Start (110v)
47A	70/02421Capacitor Start (230v)
48	70/02451Capacitor Run (110v)
48A	70/02431Capacitor Run (230v)
49	909/998081Emergency Stop Guard
50	70/02811Cable Gland
51	7/60011Screw (M6 x 12)
52	4/60075Washer (M6)
53	8/60021Nut (M6)
54	909/998091Emergency Stop Cover
55	9/60083Bolt (M6 x 20)
56	4/60055Washer (M6)
57	7/60392Screw (M6 x 30)
58	4/60091Retaining Washer
-	800/10420A/RDecal Hot Parts
-	800/21512A/RDecal Yanmar Maintenance
-	800/21520A/RDecal Charge Light
-	800/21534A/RDecal Yanmar Starting
-	800/99916A/RDecal Yanmar Noise
-	800/215131Decal Motor Maintenance
-	800/215331Decal Motor Start Up
-	800/999161Decal Motor Noise



Hourmeter Assembly (Lister & Yanmar) 10-01

1	70/0039.....1	Engine Hour Meter (Lister)
2	9/6001.....2	Bolt M6 x 16 Hex BZP
3	4/6001.....4	Washer M6 Form A BZP
4	909/99944.....1	Plate Lister Hourmeter
5	8/6002.....2	Nut M6 BINX BZP
6	909/99945.....1	Plate Yanmar Hourmeter
7	100/02400.....1	Engine Hour Meter (Yanmar)
8	9/4001.....2	Bolt M4 x 12
9	8/4004.....2	Nut M4
10	4/4001.....2	Washer M4
11	71/0171.....2	Harness Hour Meter (Yanmar)
12	OPM/04/DIO.....1	Hourmeter Kit (Lister)
13	OPM/05/DIO.....1	Hourmeter Kit (Yanmar)
14	71/0298.....1	Harness Hour Meter (Yanmar)



BELLE
LIGHT
CONSTRUCTION
EQUIPMENT

ALTRAD BELLE
Sheen, Nr. Buxton, Derbyshire, SK17 0EU, GB
Tel. +44 (0)1298 84606 - Fax +44 (0)1298 84722 - Email: sales@altrad-belle.com
www.Altrad-Belle.com