

SX SERIES SITE DUMPERS



Barford Site Dumpers

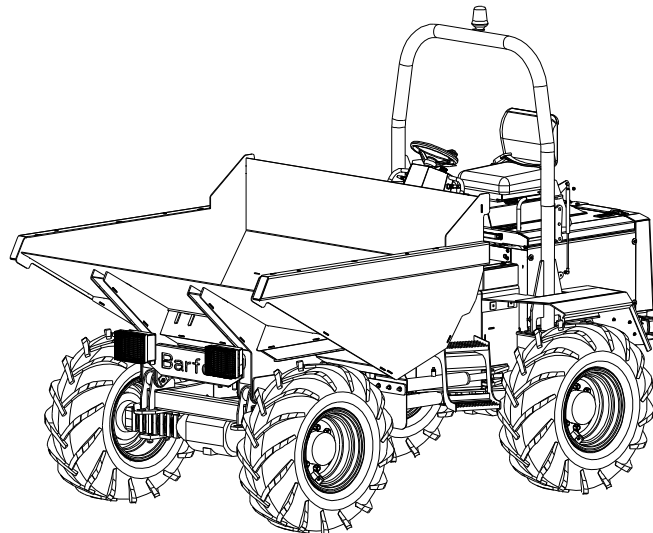
Site Dumper

SX 5000, 6000,
7000, 8000, 9000

SXR 5000, 6000, 7000, 8000

PARTS MANUAL

ISSUE : - 0 4 - 0 1 - 2 0 0 6



CONTENTS



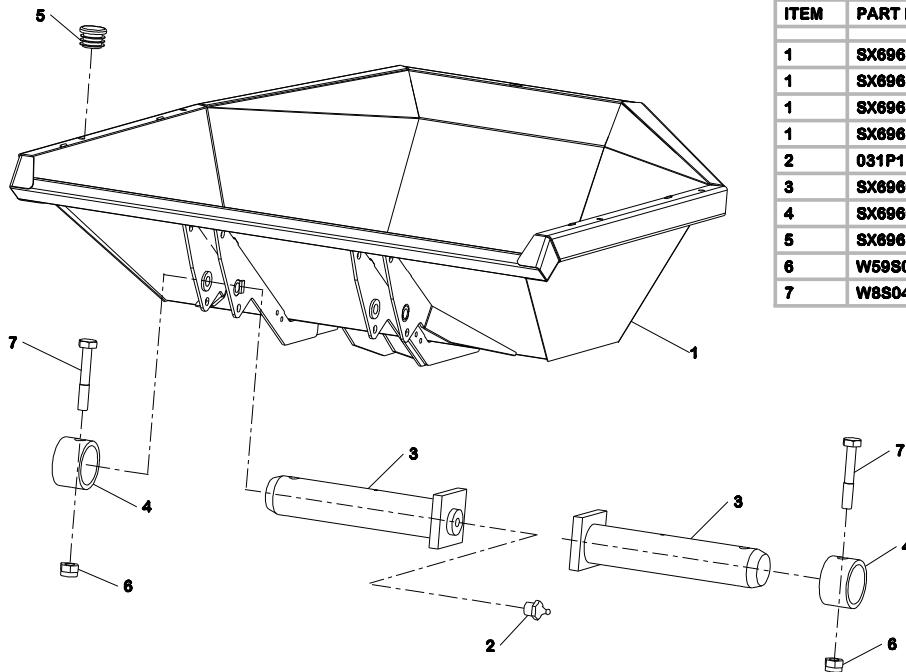
PAGE 1	SKIP AND PINS	PAGE 32	THROTTLE ASSEMBLY
PAGE 2	SKIP AND PINS ROTA	PAGE 33	FUEL TANK ASSEMBLY
PAGE 3	TURNTABLE	PAGE 34	BATTERY AND FIXINGS
PAGE 4	TURNTABLE	PAGE 35	ELECTRICAL GENERAL
PAGE 5	FRONT CHASSIS AND BOTTOM PIN	PAGE 36	AXLES
PAGE 6	FRONT CHASSIS AND BOTTOM PIN ROTA	PAGE 37	WHEELS AND TYRES
PAGE 7	SKIP PROP AND LOCKING PINS	PAGE 38	MUD GUARDS SX 5/6/7/8/9
PAGE 8	SKIP PROP AND LOCKING PINS ROTA	PAGE 39	MUD GUARDS SXR 5
PAGE 9	STEERING ASSEMBLY	PAGE 40	MUD GUARDS SXR 6/7/8
PAGE 10	PEDESTAL	PAGE 41	TRANSMISSION
PAGE 11	PEDESTAL ELECTRICS	PAGE 42	PROP SHAFTS
PAGE 12	SEAT	PAGE 43	DROP BOX AND FIXINGS
PAGE 13	BONNET ASSEMBLY 5/6/7 TONNE	PAGE 44	ENGINE AND ACCESSORIES
PAGE 14	BONNET ASSEMBLY 5/6/7 TONNE	PAGE 45	ENGINE AND ACCESSORIES (TURBO)
PAGE 15	BONNET ASSEMBLY 8/9 TONNE	PAGE 46	AIR CLEANER SX/R 5/6
PAGE 16	BONNET ASSEMBLY 8/9 TONNE	PAGE 47	AIR CLEANER SX/R 7/8/9
PAGE 17	REAR CHASSIS 5/6/7 TONNE	PAGE 48	EXHAUST
PAGE 18	REAR CHASSIS 5/6/7 TONNE	PAGE 49	EXHAUST TURBO
PAGE 19	REAR CHASSIS 8/9 TONNE	PAGE 50	STEERING RAM
PAGE 20	REAR CHASSIS 8/9 TONNE	PAGE 51	SLEW RAM
PAGE 21	ENGINE AND TRANSMISSION MOUNTS	PAGE 52	TIP RAM
PAGE 22	ROPS FRAME AND REAR COVER	PAGE 53	TIP RAM ROTA SXR 5/6
PAGE 23	HYDRAULIC TANK	PAGE 54	TIP RAM ROTA SXR 7/8/9
PAGE 24	HYDRAULIC SCHEMATIC SX 5/6/7/8/9	PAGE 55	RADIATOR AND OIL COOLER
PAGE 25	HYDRAULIC SCHEMATIC SX 5/6/7/8/9	PAGE 56	RADIATOR FIXINGS
PAGE 26	HYDRAULIC SCHEMATIC SXR 5/6	PAGE 57	BRAKES SX/R 5/6/7
PAGE 27	HYDRAULIC SCHEMATIC SXR 5/6	PAGE 58	BRAKES SX/R 8/9
PAGE 28	HYDRAULIC SCHEMATIC SXR 7/8	PAGE 59	PARKING BREAK
PAGE 29	HYDRAULIC SCHEMATIC SXR 7/8	PAGE 60	TOP LINK AND PINS
PAGE 30	HYDRAULIC CONTROL VALVES	PAGE 61	LIGHTS OPTION
PAGE 31	HYDRAULIC CONTROL VALVES ROTA	PAGE 62	LIGHTS OPTION

SXR5/6/7/8000

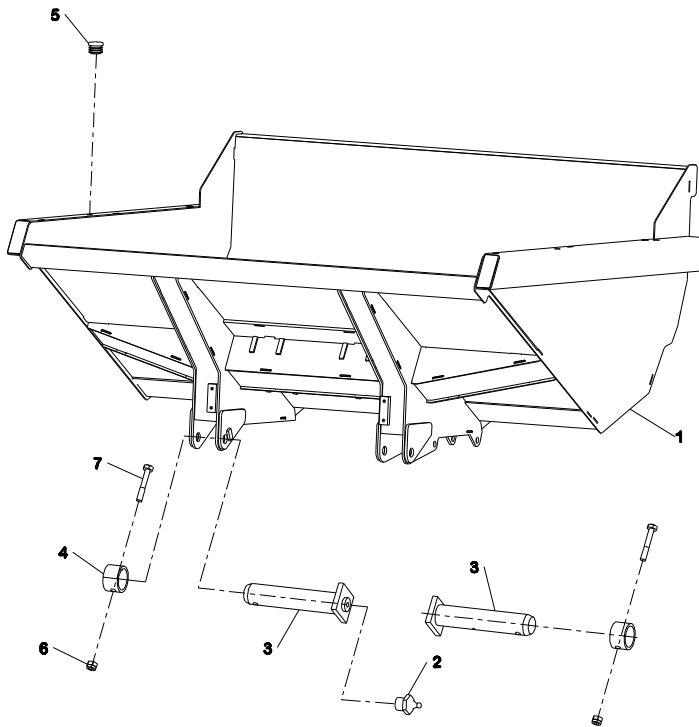


SKIP AND PINS ROTA

ITEM	PART NO.	DESCRIPTION	QTY	U/M
1	SX696119	SKIP SXR5000	1	EA
1	SX696112A	SKIP SXR6000	1	EA
1	SX696118	SKIP SXR7000	1	EA
1	SX696113A	SKIP SXR8000	1	EA
2	031P1	GREAS NIPPLE 1/8" BSPF	2	EA
3	SX696065A	TIP PIVOT PIN	2	EA
4	SX696077	COLLAR	2	EA
5	SX696111	PLUG PLASTIC	4	EA
6	W59S03	NUT NYLOC BZP	2	EA
7	W8S04J	BOLT	2	EA



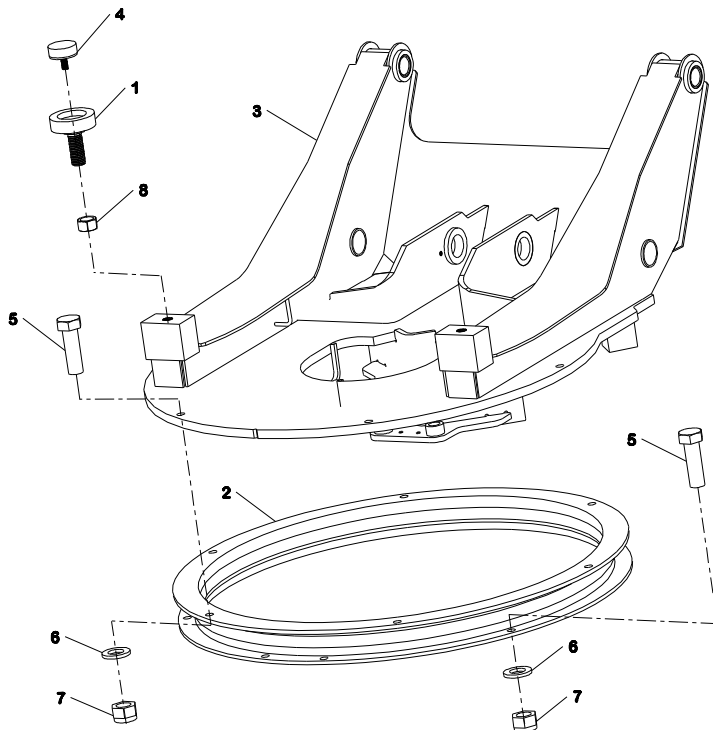
SX5/6/7/8/9000



SKIP AND PINS

ITEM	PART NO.	DESCRIPTION	QTY	U/M
1	SX696080	SKIP SX5000	1	EA
1	SX696081	SKIP SX6000	1	EA
1	SX696082	SKIP SX7000	1	EA
1	SX696083	SKIP SX8000	1	EA
1	SX696084	SKIP SX9000	1	EA
2	031P1	GREAS NIPPLE 1/8" BSPF	2	EA
3	SX696065A	TIP PIVOT PIN	2	EA
4	SX696077	COLLAR	2	EA
5	SX696111	PLUG PLASTIC	4	EA
6	W59S03	NUT NYLOC BZP	2	EA
7	W8S04J	BOLT	2	EA

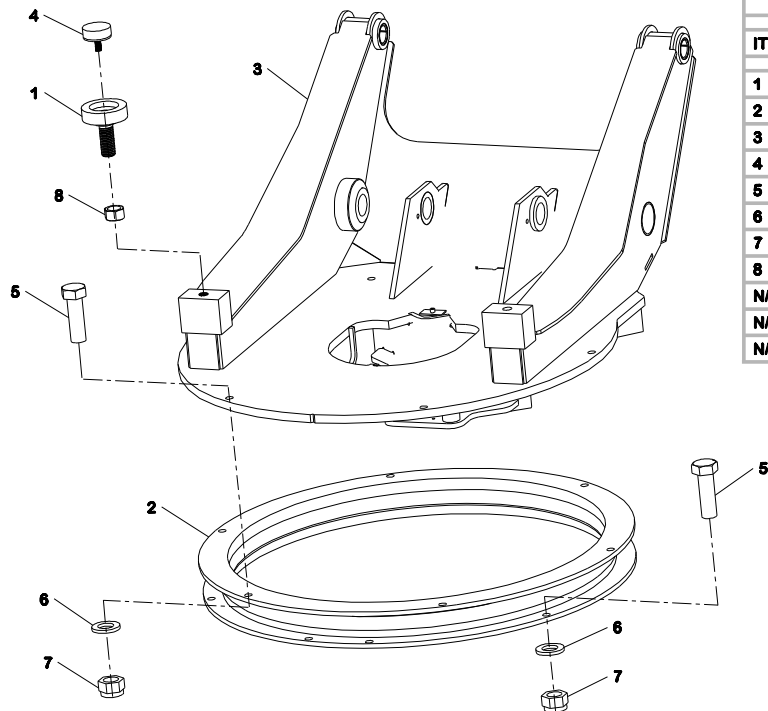
SXR5/6000



TURNTABLE AND SLEW RING

ITEM	PART NO.	DESCRIPTION	QTY	U/M
1	SX696014	SKIP STOP	2	EA
2	SX696099A	SLEWING RING	1	EA
3	SX696116	TURNTABLE	1	EA
4	SX696127	BUFFER	2	EA
5	W11S06H	SETSCREW	12	EA
6	W267S09	WASHER BZP	12	EA
7	W59S11	NUT NYLOC BZP	12	EA
8	W7S08	M10 NUT BZP	2	EA
N/A	SW682136	SHIM 0.25	AR	EA
N/A	SW682137	SHIM 0.40	AR	EA
N/A	SW682138	SHIM 1.22	AR	EA

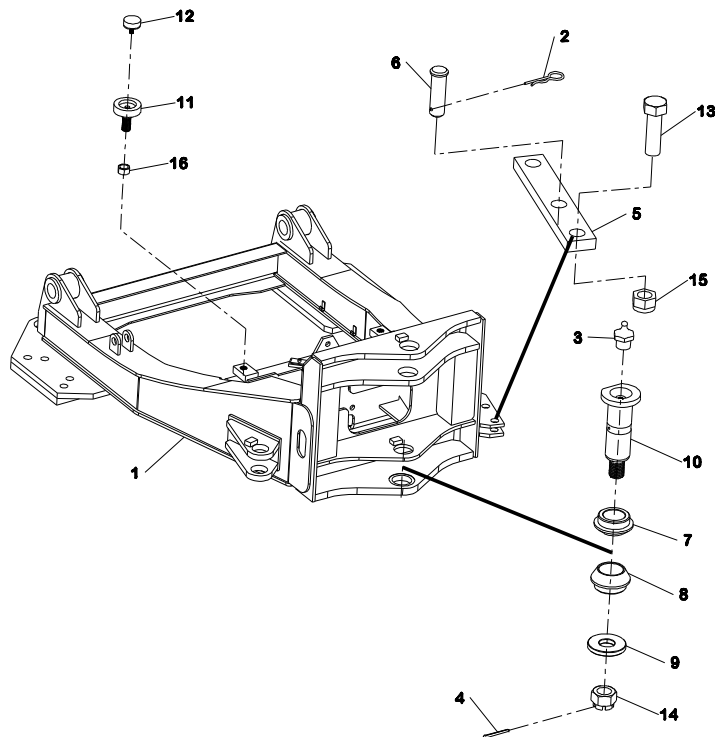
SXR7/8000



TURNTABLE AND SLEW RING

ITEM	PART NO.	DESCRIPTION	QTY	U/M
1	SX696014	SKIP STOP	2	EA
2	SX696100A	SLEWING RING	1	EA
3	SX696117A	TURNTABLE	1	EA
4	SX696127	BUFFER	2	EA
5	W11S06H	SETSCREW	12	EA
6	W267S09	WASHER BZP	12	EA
7	W59S11	NUT NYLOC BZP	11	EA
8	W7S08	M10 NUT BZP	2	EA
N/A	SW682136	SHIM 0.25	AR	EA
N/A	SW682137	SHIM 0.40	AR	EA
N/A	SW682138	SHIM 1.22	AR	EA

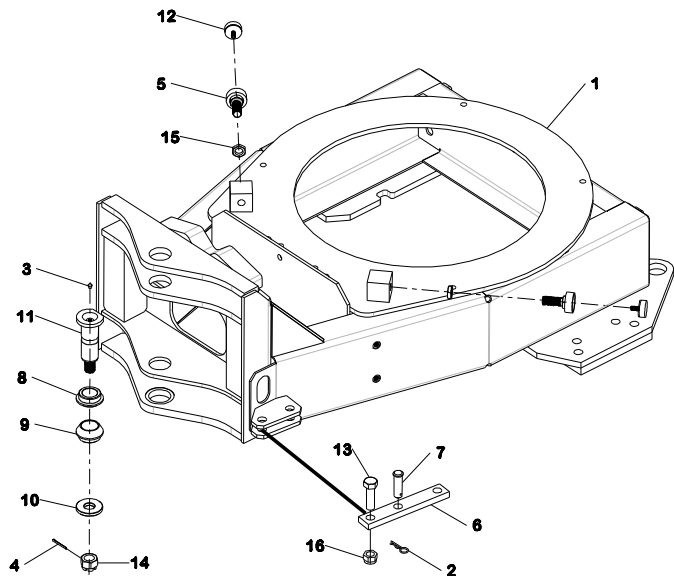
SX5/6/7/8/9000



FRONT CHASSIS AND BOTTOM PIN

ITEM	PART NO.	DESCRIPTION	QTY	U/M
1	SX607069	FRONT FRAME 5-9T STR	1	EA
2	91510702	SPRING COTTER	1	EA
3	031P1	GREAS NIPPLE 1/8" BSPF	1	EA
4	335P6_2	SPLIT_PIN	1	EA
5	SX607003	LOCKING BAR	1	EA
6	SX607004	PIN	1	EA
7	SX609002	BUSH	1	EA
8	SX609005	BOTTOM BUSH	1	EA
9	SX609225	WASHER	1	EA
10	SX609242	BOTTOM PIN	1	EA
11	SX696097A	SKIP STOP	2	EA
12	SX696127	BUFFER	2	EA
13	W11508P	SETSCREW	1	EA
14	W228S12	CASTLE NUT	1	EA
15	W59S07	NUT NYLOC BZP	1	EA
16	W7S08	M10 NUT BZP	2	EA

SXR5/6/7/8000



FRONT CHASSIS AND BOTTOM PIN ROTA

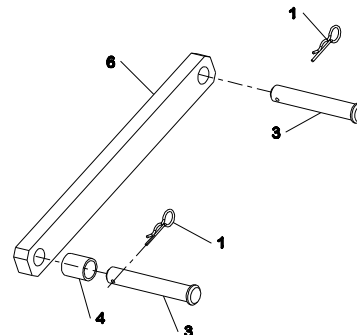
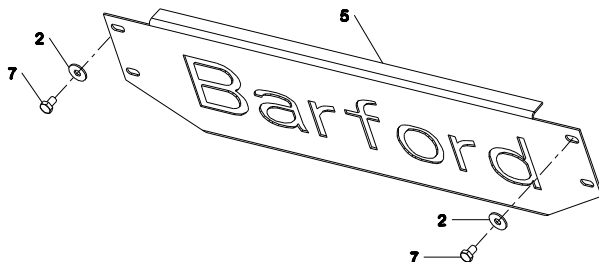
ITEM	PART NO.	DESCRIPTION	QTY	U/M
1	SX607072A	FRONT FRAME ROTA	1	EA
2	91510702	SPRING COTTER	1	EA
3	031P1	GREAS NIPPLE 1/8" BSPF	1	EA
4	335P6_2	SPLIT_PIN	1	EA
5	SX454004	SKIP STOP	2	EA
6	SX607003	LOCKING BAR	1	EA
7	SX607004	PIN	1	EA
8	SX609002	BUSH	1	EA
9	SX609005	BOTTOM BUSH	1	EA
10	SX609225	WASHER	1	EA
11	SX609242	BOTTOM PIN	1	EA
12	SX696127	BUFFER	2	EA
13	W11S08P	SETScrew	1	EA
14	W228S12	CASTLE NUT	1	EA
15	W56S08	LOCKNUT	2	EA
16	W59S07	NUT NYLOC BZP	1	EA

SX5/6/7/8/9000



SKIP PROP AND LOCKING PINS

ITEM	PART NO.	DESCRIPTION	QTY	U/M
1	91510702	SPRING COTTER	2	EA
2	128M10	TEDDER WASHER	4	EA
3	SX607053	PIN SKIP PROP	2	EA
4	SX607055	SPACER	1	EA
5	SX696032	NAME PLATE	1	EA
6	SX696034	SKIP PROP	1	EA
7	W11S04A	SETScrew	4	EA

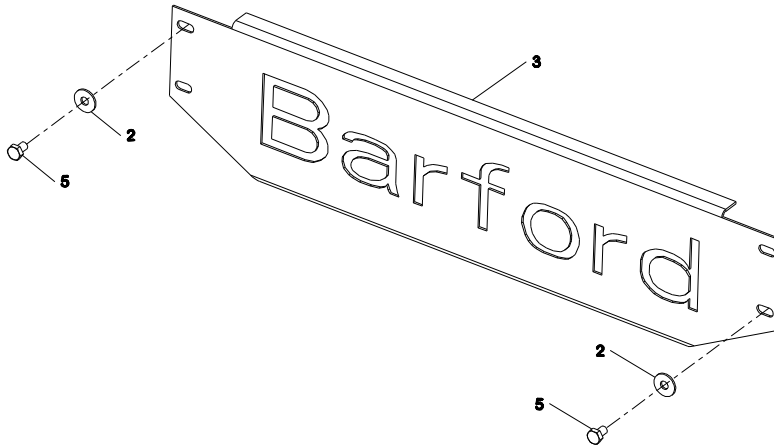
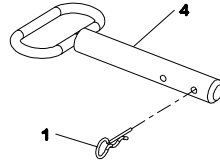


SXR5/6/7/8000

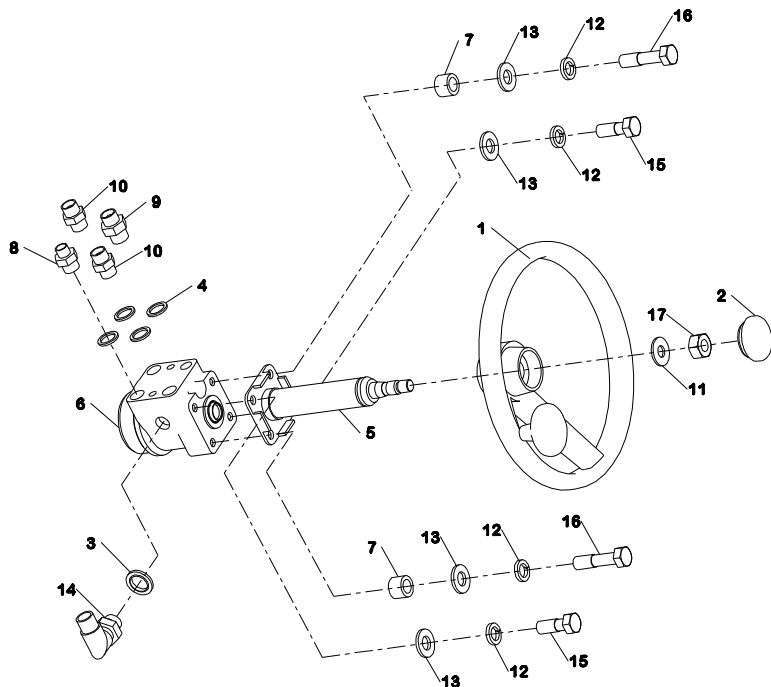


SKIP PROP AND LOCKING PINS ROTA

ITEM	PART NO.	DESCRIPTION	QTY	U/M
1	91510702	SPRING COTTER	1	EA
2	128M10	TEDDER WASHER	4	EA
3	SX696032	NAME PLATE	1	EA
4	SX696108	PIN PROP	1	EA
5	W11S04A	SETSCREW	4	EA



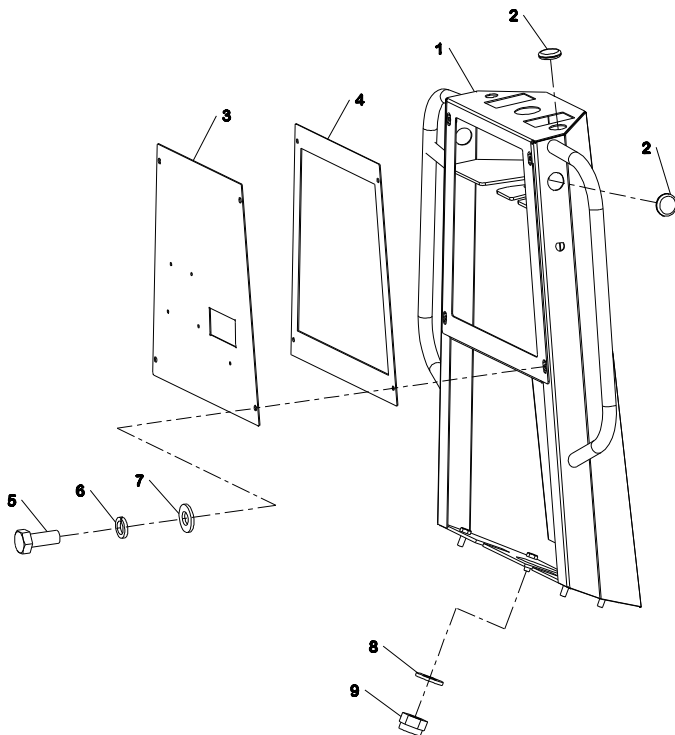
SX5/6/7/8/9, SXR5/6/7/8000



STEERING ASSEMBLY

ITEM	PART NO.	DESCRIPTION	QTY	U/M
1	1006334A	STEERING WHEEL	1	EA
2	1006335B	CENETR CAP INVICTA	1	EA
3	330P2	BONDED SEAL	1	EA
4	330P4	BONDED SEAL	4	EA
5	SX688003	STEERING COLUMN	1	EA
6	SX688008	STEERING UNIT	1	EA
7	TR680183	SPACER	2	EA
8	W119S08	ADAPTER M-M 3/4" BSP	1	EA
9	W119S12	ADAPTER M-M 3/4" BSP	1	EA
10	W122S04	ADAPTER M-M 3/4" BSP	2	EA
11	W160S07	WASHER	1	EA
12	W17S05	WASHER SPRING	4	EA
13	W267S06	WASHER BZP	4	EA
14	W317S01	ELBOW 1/2" BSP	1	EA
15	W66S03A	SETSCREW	2	EA
16	W66S03D	SETSCREW	2	EA
17	W95S06	NUT	1	EA

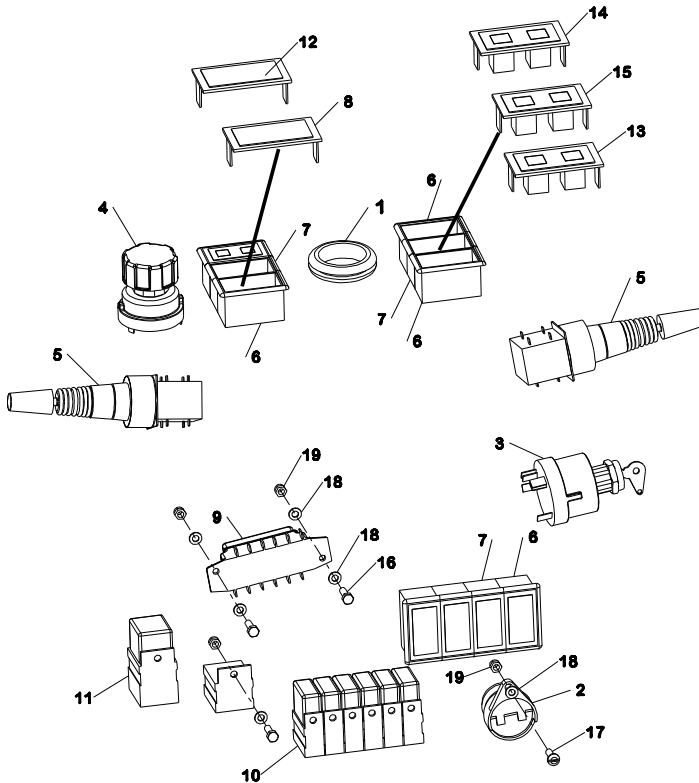
SX5/6/7/8/9000, SXR5/6/7/8000



PEDESTAL

ITEM	PART NO.	DESCRIPTION	QTY	U/M
1	SX609307	PEDESTAL	1	EA
2	181P13C	GROMMET	2	EA
3	SX609308	PANEL	1	EA
4	SX609309	GASKET	1	EA
5	W11S03B	SETSCREW	4	EA
6	W17S04	WASHER SPRING	4	EA
7	W267S05	WASHER BZP	4	EA
8	W267S06	WASHER BZP	4	EA
9	W59S03	NUT NYLOC BZP	4	EA

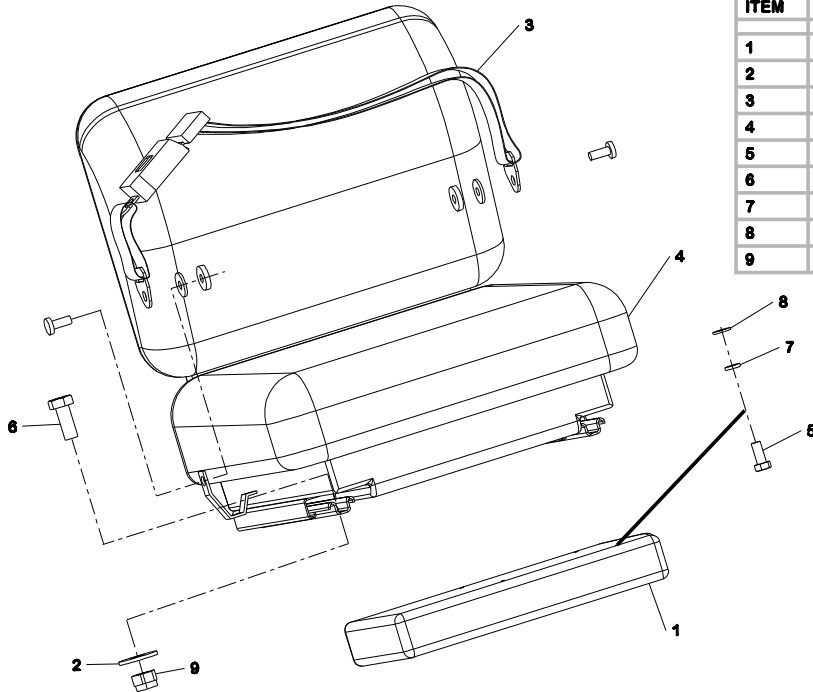
SX5/6/7/8/9000, SXR5/6/7/8000



PEDESTAL ELECTRICS

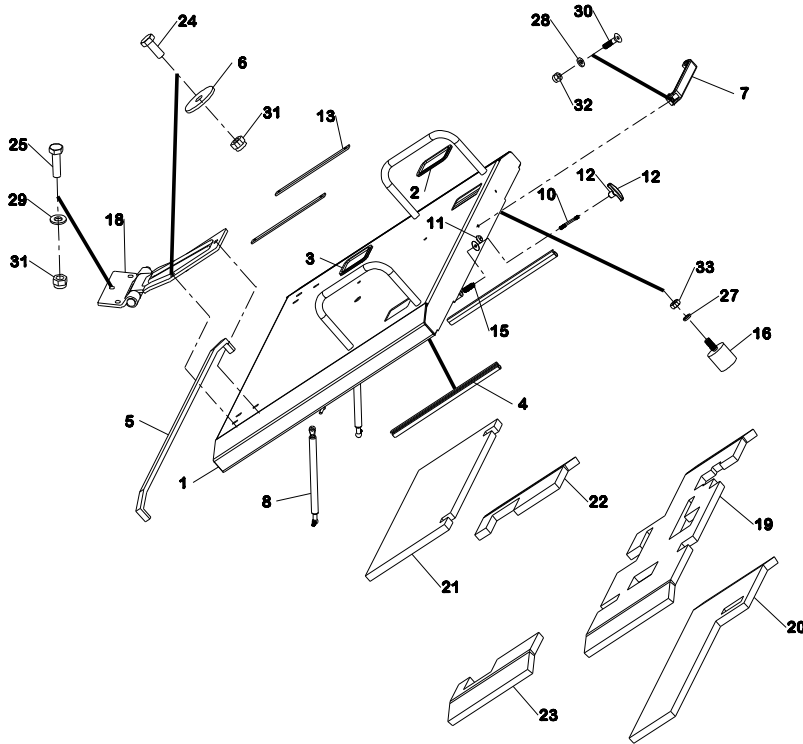
ITEM	PART NO.	DESCRIPTION	QTY	U/M
1	180P17F	GROMMET	1	EA
2	P262416-43	BUZZER	1	EA
3	P264112-39	KEYSWITCH	1	EA
4	P264112-40	ROTARY SWITCH	1	EA
5	P264116-19	SWITCH	2	EA
6	P264127-52	HOUSING END	6	EA
7	P264127-53	HOUSING CENTRE	4	EA
8	P264127-54	BLANK	6	EA
9	P264212-20	BASE	1	EA
10	P264511-67	5 PIN RELAY 12V 10/20A	6	EA
11	P26511-82	70A RELAY 12V DC (IN LOOM)	1	EA
12	P266114-111	WARNING FULL BEAM	1	EA
13	P266114-112	WARNING GBOX OIL PRESS & TEMP	1	EA
14	P266114-113	WARNING PARK BREAK/BATTERY	1	EA
15	P266114-114	WARNING OIL PRESS/ENG TEMP	1	EA
16	W118011AA	SETSCREW	4	EA
17	W16S06B	PANHEAD SCREW	1	EA
18	W267903	WASHER BZP	7	EA
19	W59S13	NUT NYLOC BZP	5	EA
N/A	P264131-41	25A CIRCUIT BREAKER	1	EA
N/A	P264131-42	15A CIRCUIT BREAKER	2	EA
N/A	P264131-43	10A CIRCUIT BREAKER	1	EA
N/A	P264131-44	8A CIRCUIT BREAKER	2	EA
N/A	8X715108	LOOM PEDESTAL	1	EA

SX5/6/7/8/9000, SXR5/6/7/8000



SEAT				
ITEM	PART NO.	DESCRIPTION	QTY	U/M
1	1006519	DOC BOX	1	EA
2	128M8	TEDDER WASHER	4	EA
3	SX413020	SEAT BELT	1	EA
4	SX891015	SEAT	1	EA
5	W11S01AA	SETSCREW	4	EA
6	W11S03B	SETSCREW	4	EA
7	W17S02	WASHER SPRING	4	EA
8	W267S03	WASHER BZP	4	EA
9	W59S12	NUT NYLOC BZP	4	EA

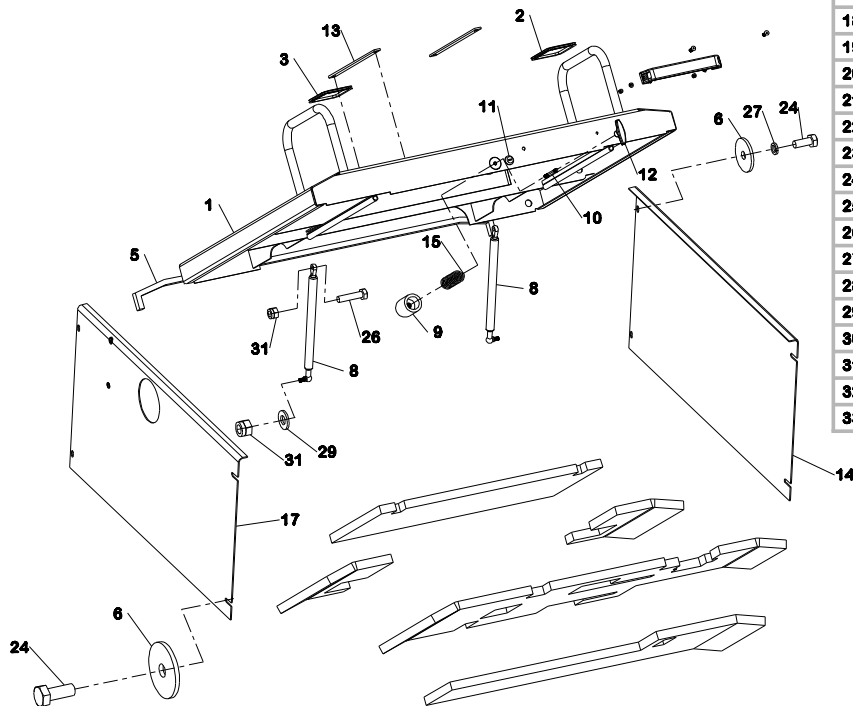
SX5/6/7000, SXR5/6/7000



BONNET ASSEMBLY

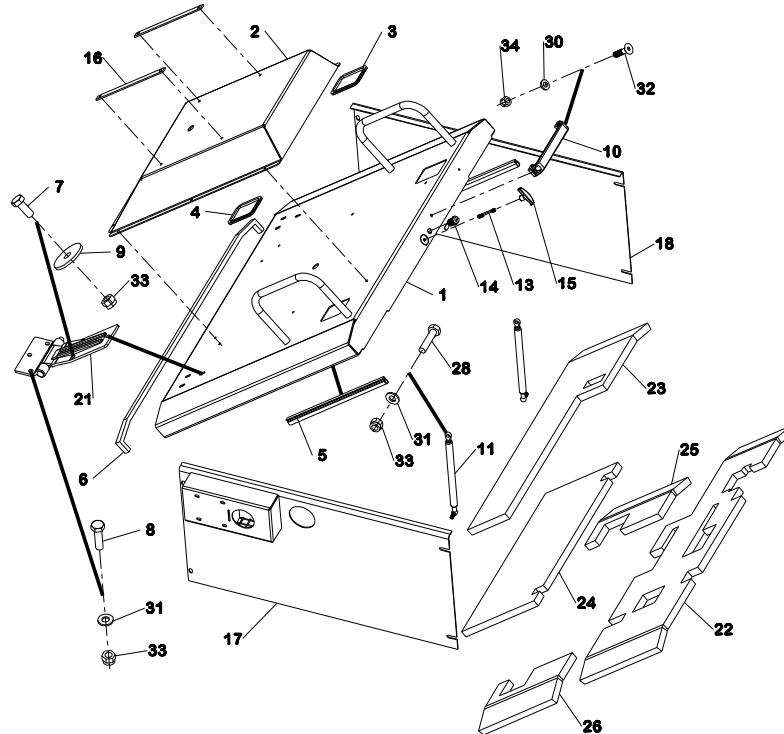
ITEM	PART NO.	DESCRIPTION	QTY	U/M
1	SX609287A	BONNET	1	EA
2	172-103-01_BM01	SEAL 400MM	1	EA
3	172-103-01_BM02	SEAL 400MM	1	EA
4	172-103-09_BM01	SEAL 985MM	2	EA
5	172-144-01_BM01	SEAL 2000MM	1	EA
6	91621036	WASHER TEDDER	14	EA
7	SW609661	HANDLE	1	EA
8	SX609033	GAS SPRING	2	EA
9	SX609227	LOCK PLUNGER	1	EA
10	SX609228	LOCK ROD	1	EA
11	SX609230	LOCK	1	EA
12	SX609232	KNOB	1	EA
13	SX609275	PACKER	2	EA
14	SX609285	PANEL	1	EA
15	SX609286	SPRING	1	EA

SX5/6/7000, SXR5/6/7000



16	SX609310	BUFFER	2	EA
17	SX609315	PANEL	1	EA
18	SX609317	HINGE	2	EA
19	SX731027A	INSULATION (FRONT)	1	EA
20	SX731028A	INSULATION (MIDDLE)	1	EA
21	SX731029A	INSULATION (MIDDLE)	1	EA
22	SX731030A	INSULATION (RIGHT)	1	EA
23	SX731031A	INSULATION (LEFT)	1	EA
24	W11S03B	SETSCREW	14	EA
25	W11S03D	SETSCREW	6	EA
26	W11S03E	SETSCREW	2	EA
27	W17S04	WASHER SPRING	6	EA
28	W267S04	WASHER BZP	2	EA
29	W267S05	WASHER BZP	10	EA
30	W52S02E	SCREW CSK	2	EA
31	W59S12	NUT NYLOC BZP	16	EA
32	W59S14	NUT NYLOC BZP	2	EA
33	W7S03	M10 NUT BZP	2	EA

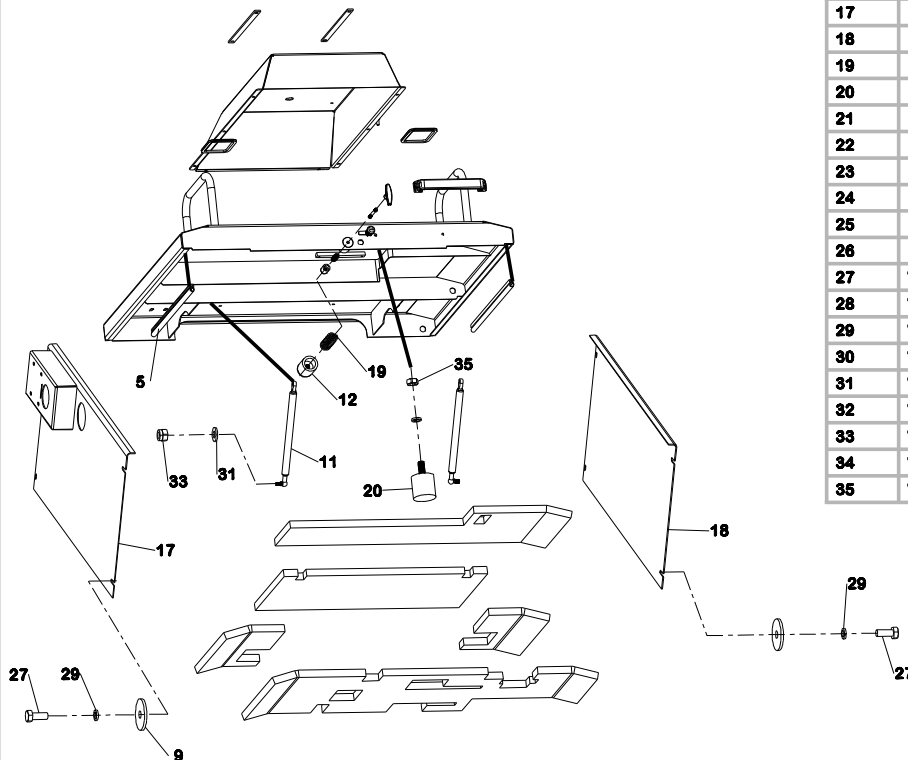
SX8/9000, SXR8000



BONNET ASSEMBLY

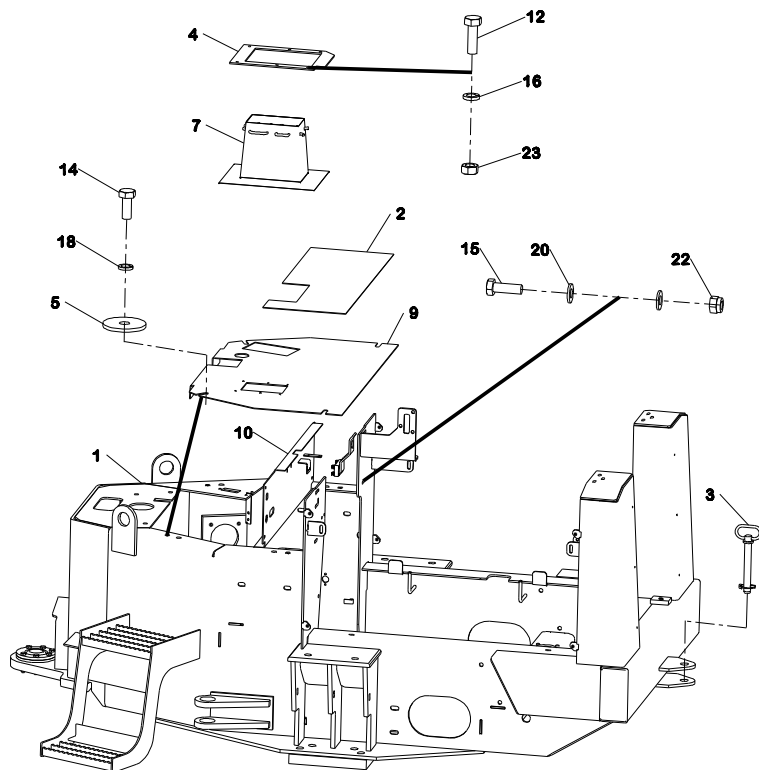
ITEM	PART NO.	DESCRIPTION	QTY	U/M
1	SX609288A	BONNET SX 8-9	1	EA
2	SX609289	SEAT BLISTER	1	EA
3	172-103-01_BM01	SEAL 400MM	1	EA
4	172-103-01_BM02	SEAL 400MM	1	EA
5	172-103-09_BM01	SEAL 985MM	2	EA
6	172-144-01_BM01	SEAL 2000MM	1	EA
7	91120505	SETSCREW	6	EA
8	91120506	SETSCREW	6	EA
9	91621036	WASHER TEDDER	14	EA
10	SW609681	HANDLE	1	EA
11	SX609033	GAS SPRING	2	EA
12	SX609227	LOCK PLUNGER	1	EA
13	SX609228	LOCK ROD	1	EA
14	SX609230	LOCK	1	EA
15	SX609232	KNOB	1	EA
16	SX609275	PACKER	2	EA

SX8/9000, SXR8000



17	SX609284A	SIDE PANEL	1	EA
18	SX609285	PANEL	1	EA
19	SX609286	SPRING	1	EA
20	SX609310	BUFFER	2	EA
21	SX609317	HINGE	2	EA
22	SX731027A	INSULATION (FRONT)	1	EA
23	SX731028A	INSULATION (MIDDLE)	1	EA
24	SX731029A	INSULATION (MIDDLE)	1	EA
25	SX731030A	INSULATION (RIGHT)	1	EA
26	SX731031A	INSULATION (LEFT)	1	EA
27	W11S03B	SETSCREW	8	EA
28	W11S03E	SETSCREW	2	EA
29	W17S04	WASHER SPRING	10	EA
30	W267S04	WASHER BZP	2	EA
31	W267S05	WASHER BZP	10	EA
32	W52S02E	SCREW CSK	2	EA
33	W59S12	NUT NYLOC BZP	16	EA
34	W59S14	NUT NYLOC BZP	2	EA
35	W7S03	M10 NUT BZP	2	EA

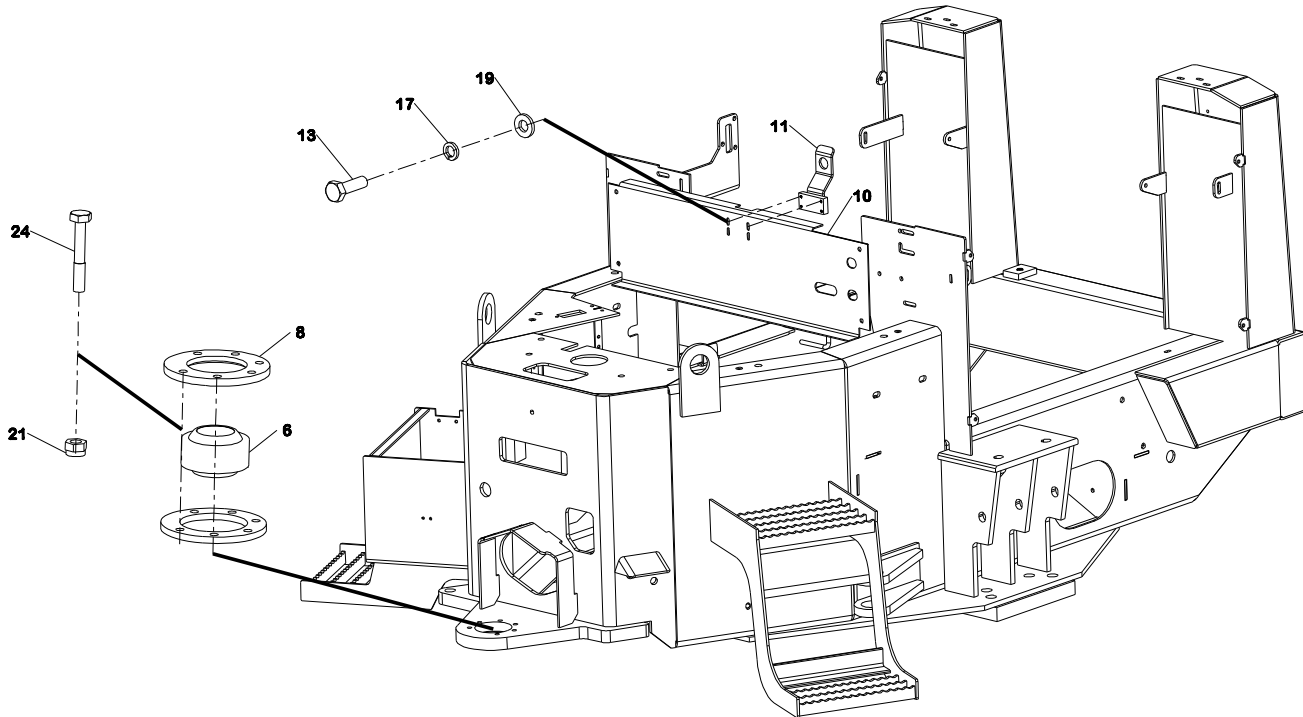
SX5/6/7000, SXR5/6/7000



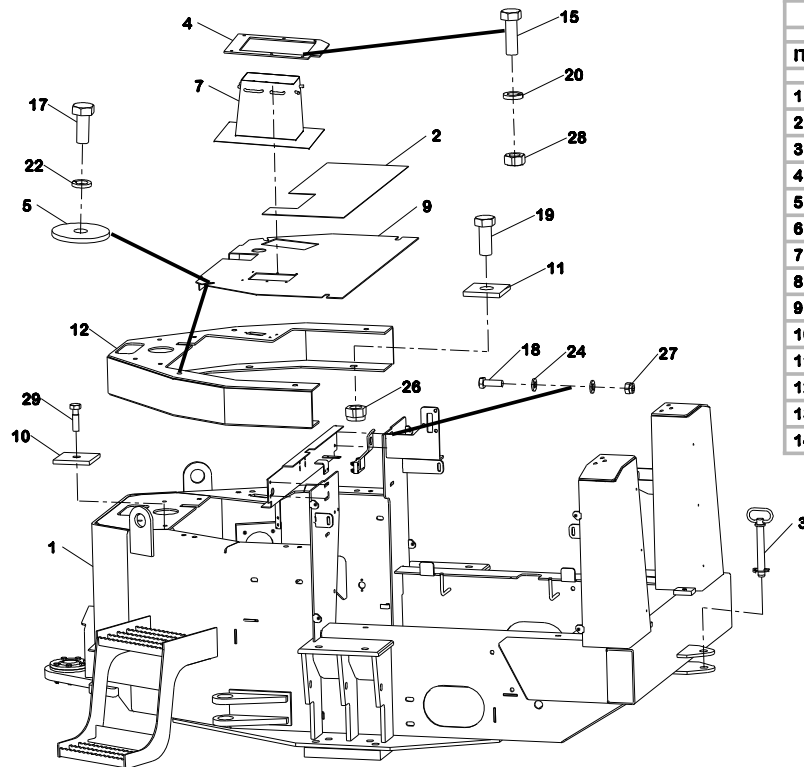
REAR CHASSIS

ITEM	PART NO.	DESCRIPTION	QTY	U/M
1	SX607073A	REAR FRAME	1	EA
2	181-201-01	SAFLEY WALK 1000MM	1	EA
3	36042	PIN DRAWBAR	1	EA
4	1009341	PLATE	1	EA
5	91621036	WASHER TEDDER	4	EA
6	RX671251	(A)45 I/D 6PH BEARING	1	EA
7	SW691146	GAFTER	1	EA
8	SX609006	CLAMP RING	1	EA
9	SX609026A	FLOORPLATE	1	EA
10	SX609231B	BULKHEAD	1	EA
11	SX609233	CATCH	1	EA
12	W11S01A	SETSCREW	6	EA
13	W11S02B	SETSCREW	4	EA
14	W11S03B	SETSCREW	4	EA
15	W11S03C	SETSCREW	4	EA
16	W17S02	WASHER SPRING	6	EA
17	W17S03	WASHER SPRING	4	EA
18	W17S04	WASHER SPRING	4	EA
19	W267S04	WASHER BZP	4	EA
20	W267S05	WASHER BZP	8	EA
21	W59S03	NUT NYLOC BZP	6	EA
22	W59S12	NUT NYLOC BZP	4	EA
23	W7S01	M10 NUT BZP	6	EA
24	W8S04J	BOLT	6	EA

SX5/6/7000, SXR5/6/7000



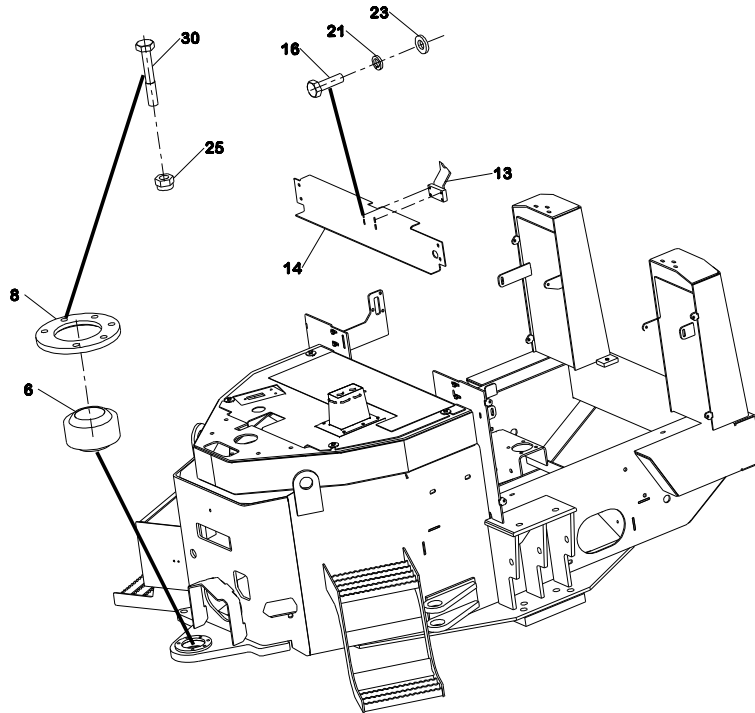
SX8/9000, SXR8000



REAR CHASSIS

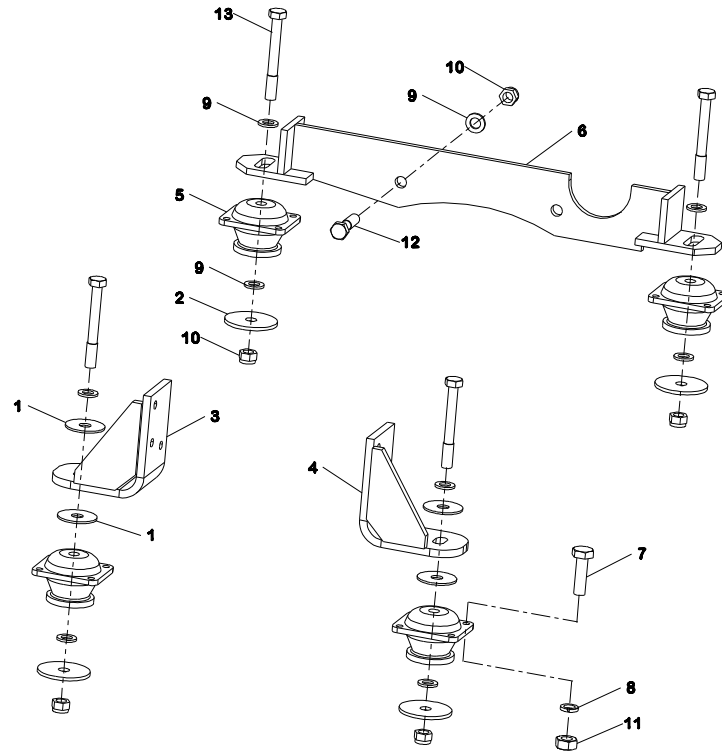
ITEM	PART NO.	DESCRIPTION	QTY	U/M
1	SX607073A	REAR FRAME	1	EA
2	181-201-01	SAFLEY WALK 1000MM	1	EA
3	36042	PIN DRAWBAR	1	EA
4	1009341	PLATE	1	EA
5	91621036	WASHER TEDDER	4	EA
6	RX671251	(A)45 I/D 6PH BEARING	1	EA
7	SW691146	GAITER	1	EA
8	SX609006	CLAMP RING	1	EA
9	SX609026A	FLOORPLATE	1	EA
10	SX609133	CLAMP PLATE	2	EA
11	SX609134	CLAMP PLATE	4	EA
12	SX609182	PLINTH ASSEMBLY	1	EA
13	SX609233	CATCH	1	EA
14	SX609240B	BULKHEAD	1	EA

SX8/9000, SXR8000



15	W11S01A	SETSCREW	6	EA
16	W11S02B	SETSCREW	4	EA
17	W11S03B	SETSCREW	4	EA
18	W11S03C	SETSCREW	4	EA
19	W11S06F	SETSCREW	4	EA
20	W17S02	WASHER SPRING	6	EA
21	W17S03	WASHER SPRING	4	EA
22	W17S04	WASHER SPRING	4	EA
23	W267S04	WASHER BZP	4	EA
24	W267S05	WASHER BZP	8	EA
25	W59S03	NUT NYLOC BZP	6	EA
26	W59S11	NUT NYLOC BZP	4	EA
27	W59S12	NUT NYLOC BZP	6	EA
28	W7S01	M10 NUT BZP	6	EA
29	W8S03B	BOLT	2	EA
30	W8S04J	BOLT	6	EA

SX5/6/7/8/9000, SXR5/6/7/8000



ENGINE AND TRANSMISSION MOUNTS

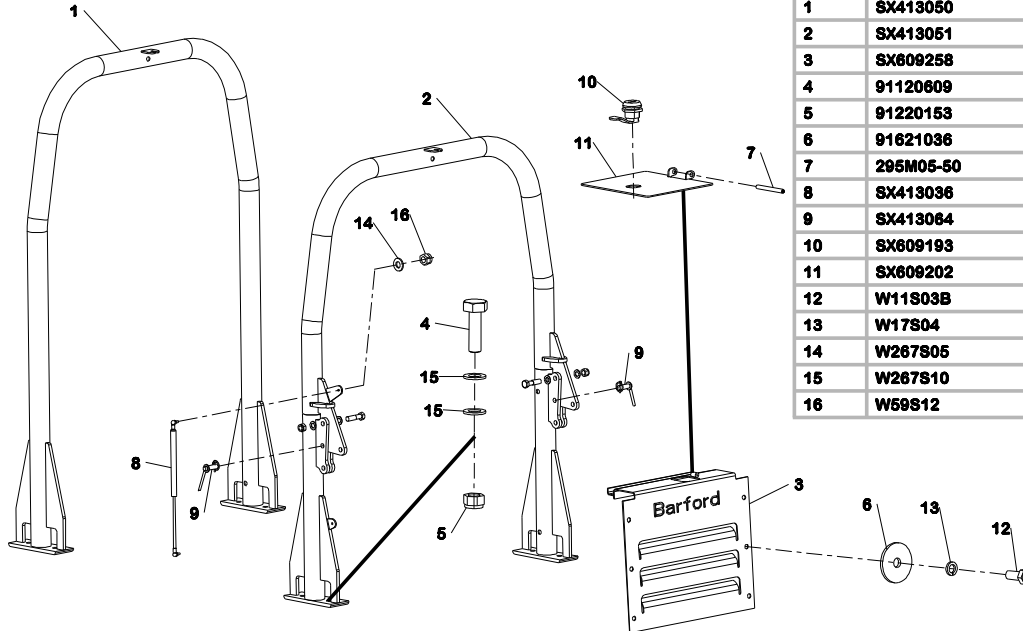
ITEM	PART NO.	DESCRIPTION	QTY	U/M
1	SX621053	WASHER	4	EA
2	SX621068	WASHER REBOUND	4	EA
3	SX621145	BRACKET ENGINE LH	1	EA
4	SX621146	BRACKET ENGINE RH	1	EA
5	SX621197	MOUNTING BLUE	4	EA
6	SX628074A	GEARBOX SUPPORT	1	EA
7	W11S04E	SETSCREW	16	EA
8	W17S05	WASHER SPRING	16	EA
9	W287S09	WASHER BZP	10	EA
10	W59S11	NUT NYLOC BZP	6	EA
11	W7S04	M10 NUT BZP	16	EA
12	W8S06J	BOLT	2	EA
13	W8S06S	BOLT	4	EA

SX5/6/7/8/9000, SXR5/6/7/8000

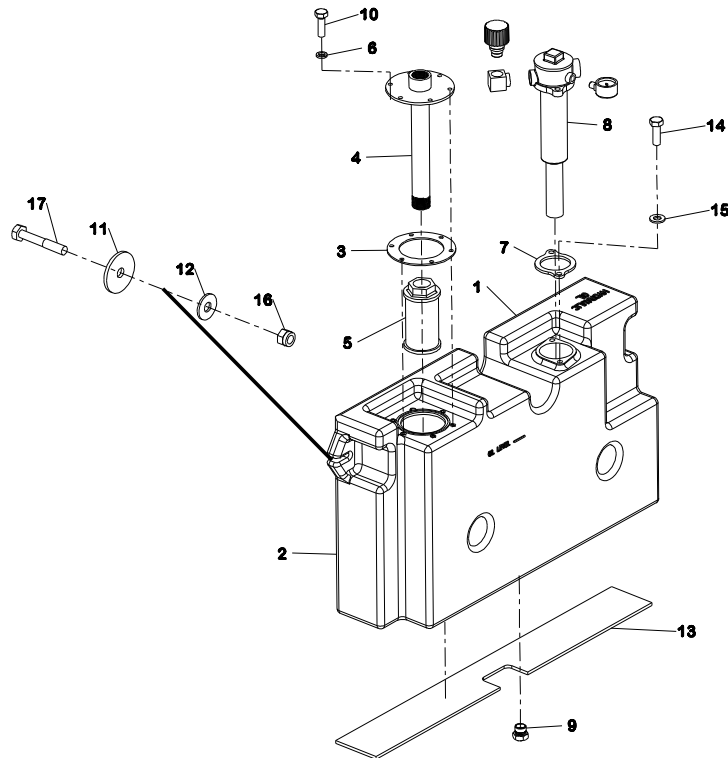


FOLDING ROPS FRAME AND REAR COVER

ITEM	PART NO.	DESCRIPTION	QTY	U/M
1	SX413050	ROPS 5-9T	1	EA
2	SX413051	ROPS 5-9T FOLDING	1	EA
3	SX609258	GRILLE SX5-8	1	EA
4	91120609	BOLT	4	EA
5	91220153	NUT NYLOC	4	EA
6	91621036	WASHER TEDDER	6	EA
7	295M05-50	TENSION PIN	1	EA
8	SX413036	GAS STRUT	1	EA
9	SX413064	ROPS BOLT KIT (5-9T)	1	EA
10	SX609193	LOCK	1	EA
11	SX609202	RADIATOR CAP	1	EA
12	W11S03B	SETSCREW	6	EA
13	W17S04	WASHER SPRING	6	EA
14	W267S05	WASHER BZP	2	EA
15	W267S10	WASHER BZP	8	EA
16	W59S12	NUT NYLOC BZP	2	EA



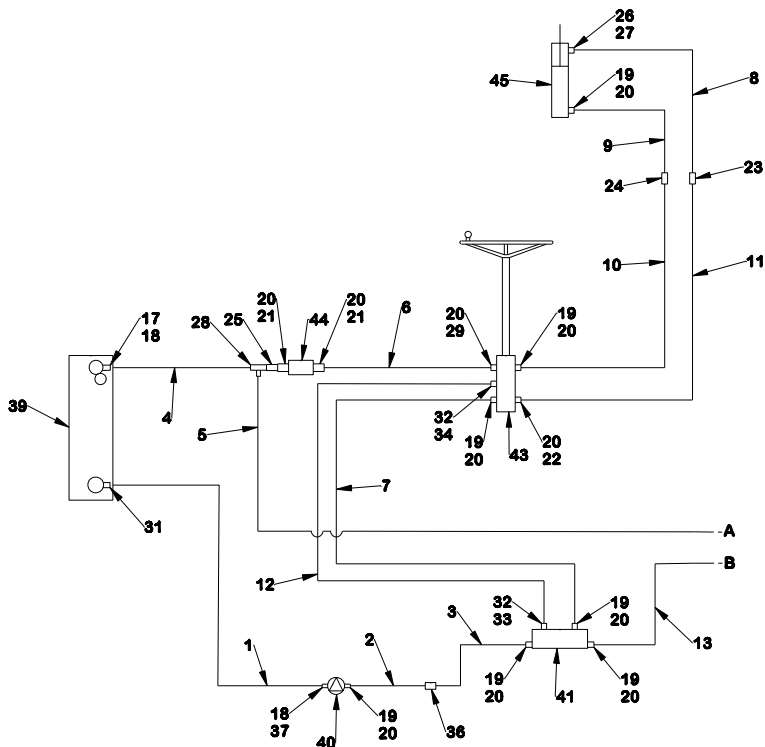
SX5/6/7/8/9000, SXR5/6/7/8000



HYDRAULIC TANK

ITEM	PART NO.	DESCRIPTION	QTY	U/M
1	SX7050-3	HYD TANK ASSY (ITEMS 2-10)	1	EA
2	SX705089A	HYD TANK	1	EA
3	SX705121	STANDPIPE GASKET	1	EA
4	SX705104	STAND PIPE SUCTION	1	EA
5	SX705100	SUCTION FILTER	1	EA
6	W17S03	WASHER SPRING	6	EA
7	SX705155	GASKET	1	EA
8	SX705165	RETURN FILTER	1	EA
9	W127S04	PLUG BLANKING	1	EA
10	W8S02GG	BOLT	6	EA
11	91821038	WASHER TEDDER	2	EA
12	128M8	TEDDER WASHER	2	EA
13	SX705166	RUBBER PAD	1	EA
14	W11S03C	SETScrew	2	EA
15	W267S05	WASHER BZP	2	EA
16	W59S12	NUT NYLOC BZP	2	EA
17	W8S03F	BOLT	2	EA

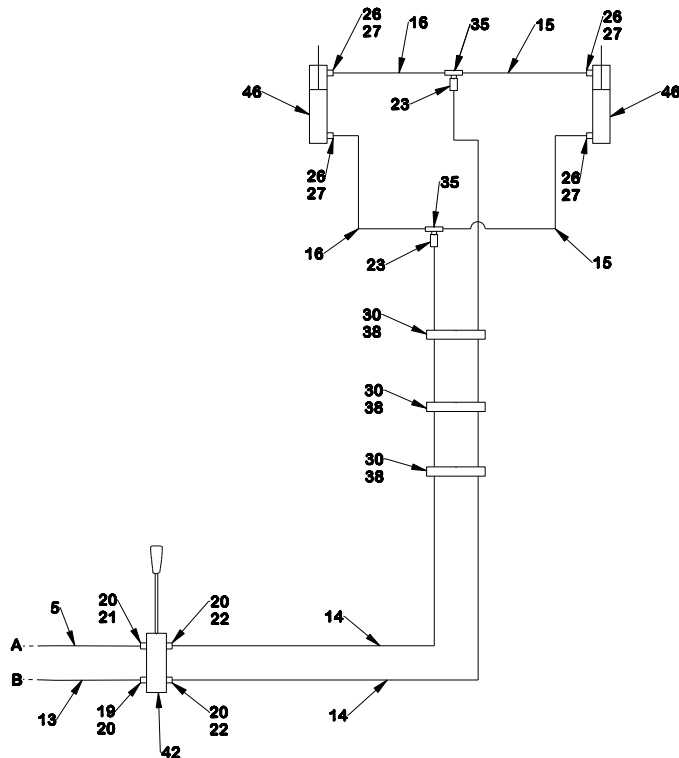
SX5/6/7/8/9000



HYDRAULIC SCHEMATICS

ITEM	PART NO.	DESCRIPTION	QTY	U/M
1	9442 2281A	HOSE	1	EA
2	9442 2247	HOSE	1	EA
3	9442 2173	HOSE	1	EA
4	9442 2192	HOSE	1	EA
5	9442 2123A	HOSE	1	EA
6	9442 2130A	HOSE	1	EA
7	9442 2121A	HOSE	1	EA
8	9442 2128B	HOSE	1	EA
9	9442 2129A	HOSE	1	EA
10	9442 2127A	HOSE	1	EA
11	9442 2126A	HOSE	1	EA
12	9442 2120A	HOSE	1	EA
13	9442 2122	HOSE	1	EA
14	9442 2124A	HOSE	2	EA
15	9442 2125	HOSE	2	EA
16	9442 2145	HOSE	2	EA
17	W119815	CONN 3/4 X 5/8	1	EA
18	330P8	BONDED SEAL	3	EA
19	W122S04	CONN 1/2 X 3/2	8	EA
20	330P4	BOND SEAL	15	EA
21	W119812	CONN 1/2 X 5/8	3	EA
22	W119S08	CONN 1/2 X 3/8	3	EA
23	W93S01	BULKHEAD 3/8	3	EA
24	W93S2	BULKHEAD 1/2	1	EA
25	W93S05	BULKHEAD 5/8	1	EA
26	W122S03	3/8 X 3/8 CONN	5	EA
27	330P3	BONDED SEAL	5	EA

SX5/6/7/8/9000

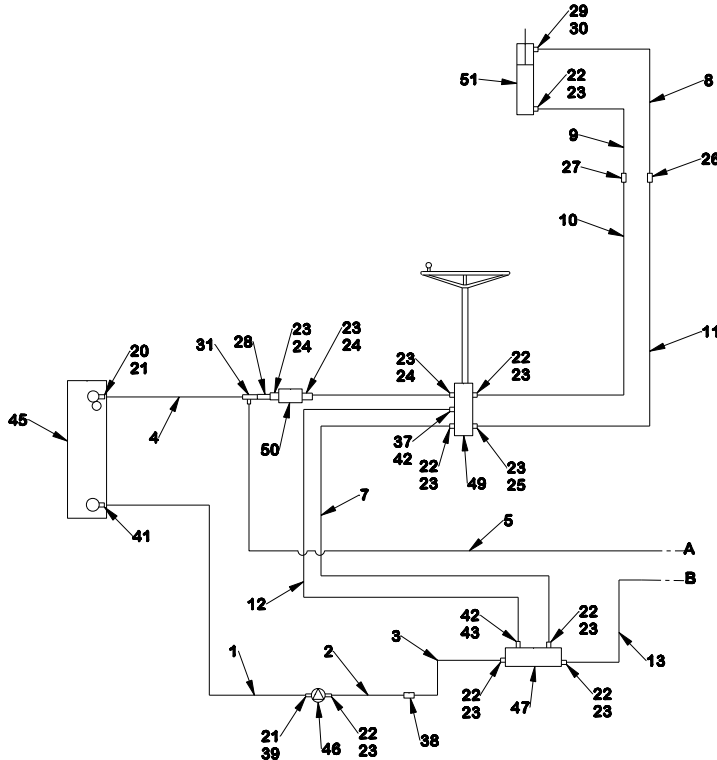


ITEM	PART NO.	DESCRIPTION	QTY	U/M
28	W154S04	TEE	1	EA
29	W122S17	CONN 1/2 X 5/8	1	EA
30	431M220	CLAMP	3	EA
31	W317S08	ELBOW	1	EA
32	330P2	BONDED SEAL	2	EA
33	W122S02	CONN 1/4 X 1/4	1	EA
34	W317S01	ELBOW	1	EA
35	W154S09	TEE	2	EA
36	SX705190	TEST POINT	1	EA
37	W119516	CONN	1	EA
38	433M203	CLAMP	3	EA
39	SX7050/3A	HYD TANK	1	EA
40	SX705197	PUMP	1	EA
41	SX705087	PRIORITY VALVE	1	EA
42	SX705071	TIP VALVE	1	EA
43	SX688008	STEERING UNIT	1	EA
44	SX705086A	CHECK VALVE	1	EA
45	SX7060/17	STEER RAM	1	EA
46	SX7070/21	TIP RAM	2	EA

SXR5/6000

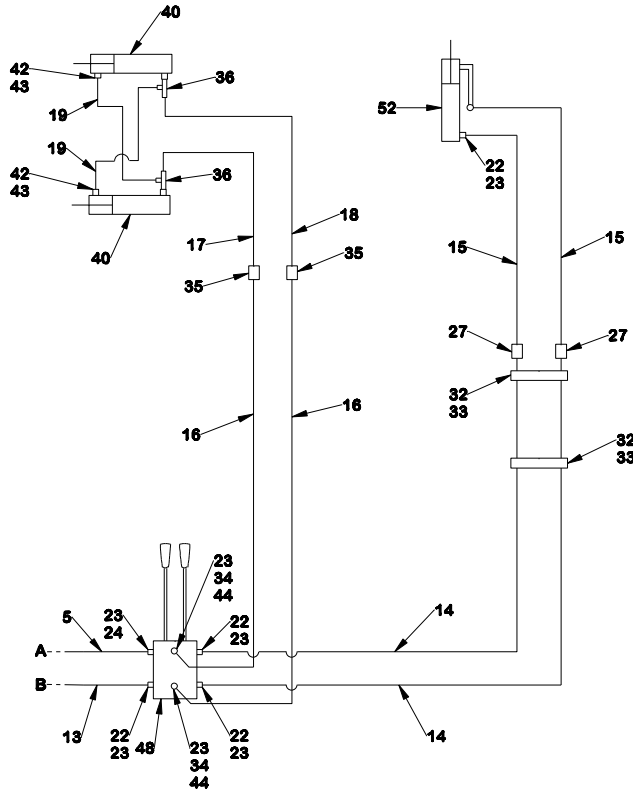


HYDRAULIC SCHEMATICS



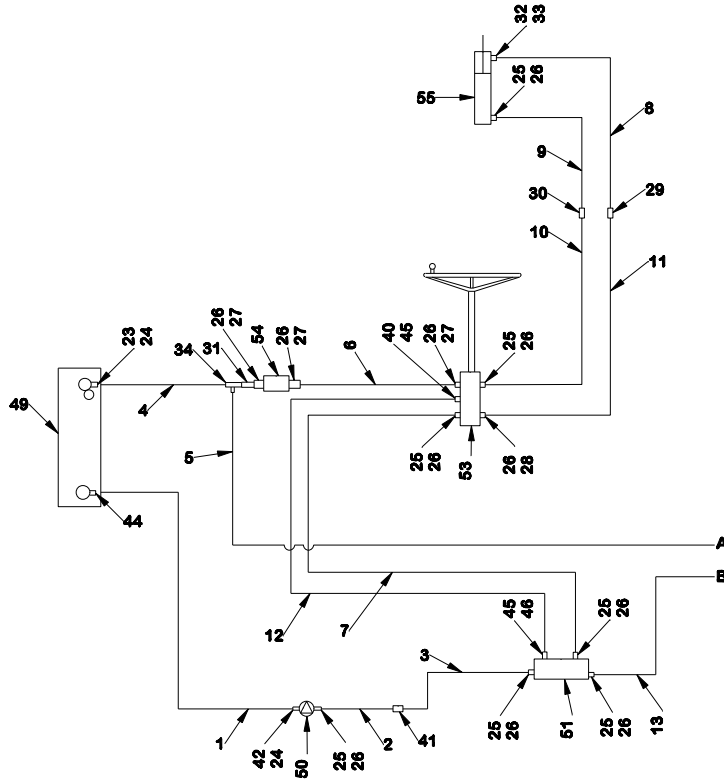
ITEM	PART NO.	DESCRIPTION	QTY	U/M
1	9442 2281A	HOSE	1	EA
2	9442 2247	HOSE	1	EA
3	9442 2173	HOSE	1	EA
4	9442 2192	HOSE	1	EA
5	9442 2123A	HOSE	1	EA
6	9442 2130A	HOSE	1	EA
7	9442 2121A	HOSE	1	EA
8	9442 2128B	HOSE	1	EA
9	9442 2129A	HOSE	1	EA
10	9442 2127A	HOSE	1	EA
11	9442 2126A	HOSE	1	EA
12	9442 2120A	HOSE	1	EA
13	9442 2122	HOSE	1	EA
14	9442 2143	HOSE	2	EA
15	9442 2138	HOSE	2	EA
16	9442 2132	HOSE	2	EA
17	9442 2133	HOSE	1	EA
18	9442 2134	HOSE	1	EA
19	9442 2135	HOSE	2	EA
20	W119S015	CONN 3/4 X 5/8	1	EA
21	330P6	BONDED SEAL	2	EA
22	W122S04	CONN 1/2 X 1/2	11	EA
23	330P4	BONDED SEAL	16	EA
24	W119S12	CONN 1/2 X 5/8	4	EA
25	W119S08	CONN 1/2 X 3/8	1	EA
26	W93S01	BULKHEAD 3/8	1	EA

SXR5/6000



ITEM	PART NO.	DESCRIPTION	QTY	U/M
27	W93S02	BULKHEAD 1/2	3	EA
28	W93S05	BULKHEAD 5/8	1	EA
29	W122S03	CONN 3/8 X 3/8	1	EA
30	330P3	BONDED SEAL	1	EA
31	W154S04	TEE	1	EA
32	433 M203	CLAMP	2	EA
33	431 M220	CLAMP	2	EA
34	W119S04	CONN 1/2 X 1/4	2	EA
35	W93S03	BULKHEAD 1/4	2	EA
36	W 318S01	TEE	2	EA
37	W317801	ELBOW	1	EA
38	SX 705140	TEST PORT	1	EA
39	W119S16	CONN	1	EA
40	SX 7070/20	SLEW RAM	2	EA
41	W317506	ELBOW	1	EA
42	330P2	BONDED SEAL	4	EA
43	W122S02	CONN 1/4 X 1/4	3	EA
44	SX 705083	RESTRICTOR	2	EA
45	SX 7050/3A	HYD TANK	1	EA
46	SX 705197	PUMP	1	EA
47	SX 705225	PRIORITY VALVE	1	EA
48	SX 705072	CONTROL VALVE	1	EA
49	SX 705224	STEERING UNIT	1	EA
50	SX 705086A	CHECK VALVE	1	EA
51	SX 7060/17	STEERING RAM	1	EA
52	SX 7070/25	TIP RAM	1	EA

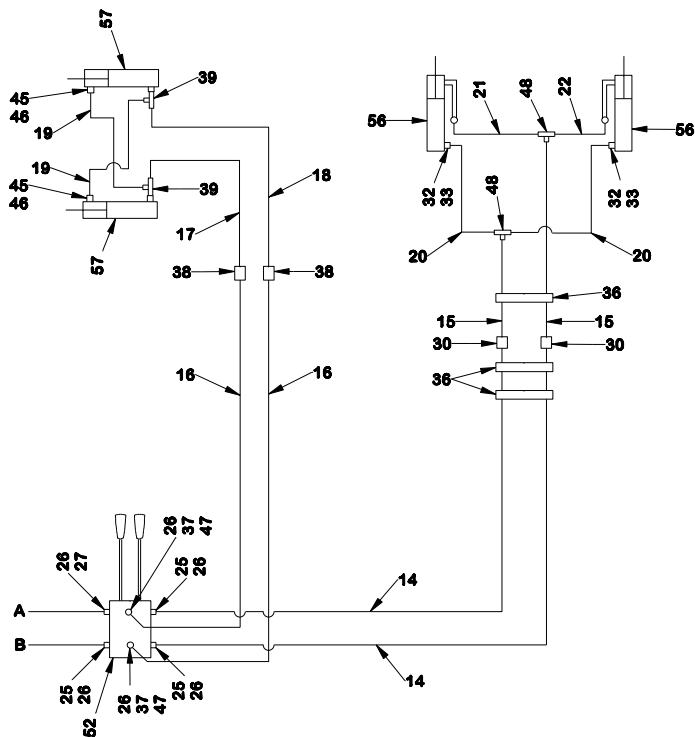
SXR7/8000



HYDRAULIC SCHEMATICS

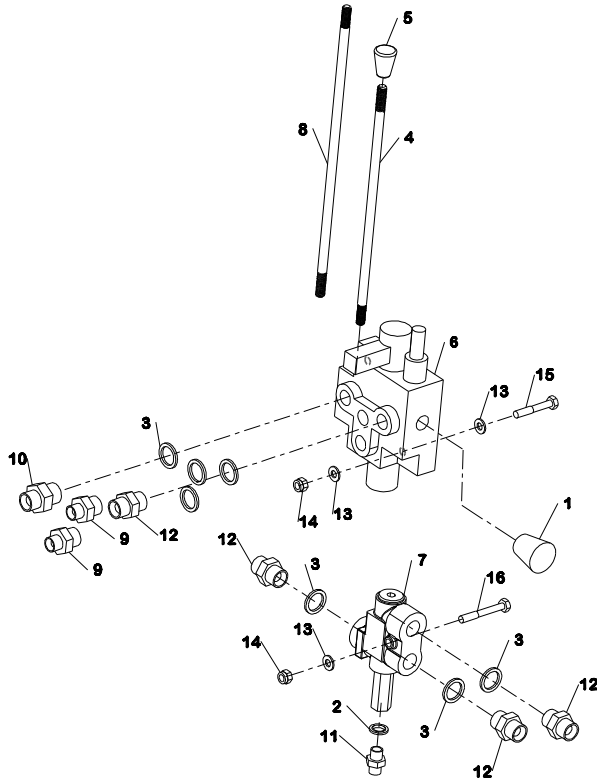
ITEM	PART NO.	DESCRIPTION	QTY	U/M
1	9442 2281A	HOSE	1	EA
2	9442 2247	HOSE	1	EA
3	9442 2173	HOSE	1	EA
4	9442 2192	HOSE	1	EA
5	9442 2123A	HOSE	1	EA
6	9442 2130A	HOSE	1	EA
7	9442 2121A	HOSE	1	EA
8	9442 2128B	HOSE	1	EA
9	9442 2129A	HOSE	1	EA
10	9442 2127A	HOSE	1	EA
11	9442 2126A	HOSE	1	EA
12	9442 2120A	HOSE	1	EA
13	9442 2122	HOSE	1	EA
14	9442 2143	HOSE	2	EA
15	9442 2141	HOSE	2	EA
16	9442 2132	HOSE	2	EA
17	9442 2133	HOSE	1	EA
18	9442 2134	HOSE	1	EA
19	9442 2135	HOSE	2	EA
20	9442 2142B	HOSE	2	EA
21	9442 2139	HOSE	1	EA
22	9442 2189	HOSE	1	EA
23	W119S15	CONN 3/4 X 5/8	1	EA
24	330P6	BONDED SEAL	1	EA
25	W122S04	CONN 1/2 X 1/2	10	EA
26	330P4	BOND SEAL	18	EA
27	W119S12	CONN 1/2 X 5/8	3	EA

SXR7/8000



28	W119S08	CONN 1/2 X 3/8	1	EA
29	W93S01	BULKHEAD 3/8	1	EA
30	W93S02	BULKHEAD 1/2	3	EA
31	W93S05	BULKHEAD 5/8	1	EA
32	W122S03	CONN 3/8 X 3/8	3	EA
33	330P3	BONDED SEAL	3	EA
34	W164S03	TEE	1	EA
35	433M203	CLAMP	3	EA
36	431M220	CLAMP	3	EA
37	W119S04	CONN 1/2 X 1/4	2	EA
38	W93S03	BULKHEAD 1/4	2	EA
39	W318S01	TEE 1/4	2	EA
40	W317S01	ELBOW	1	EA
41	SX705190	TEST POINT	1	EA
42	W119S16	CONN	1	EA
43	W317S06	ELBOW	1	EA
44	330P2	BONDED SEAL	3	EA
45	W122S02	CONN 1/4 X 1/4	3	EA
46	SX705023	RESTRICTOR	2	EA
47	W121S05	TEE	2	EA
48	SX7050/37	HYD TANK	1	EA
49	SX705197	PUMP	1	EA
50	SX705275	PRIORITY VALVE	1	EA
51	SX705072	CONTROL VALVE	1	EA
52	SX705224	STEERING UNIT	1	EA
53	SX705086A	CHECK VALVE	1	EA
54	SX7060/17	STEERING RAM	1	EA
55	SX7070/21	TIP RAM	2	EA
56	SX7070/20	SLEW RAM	2	EA

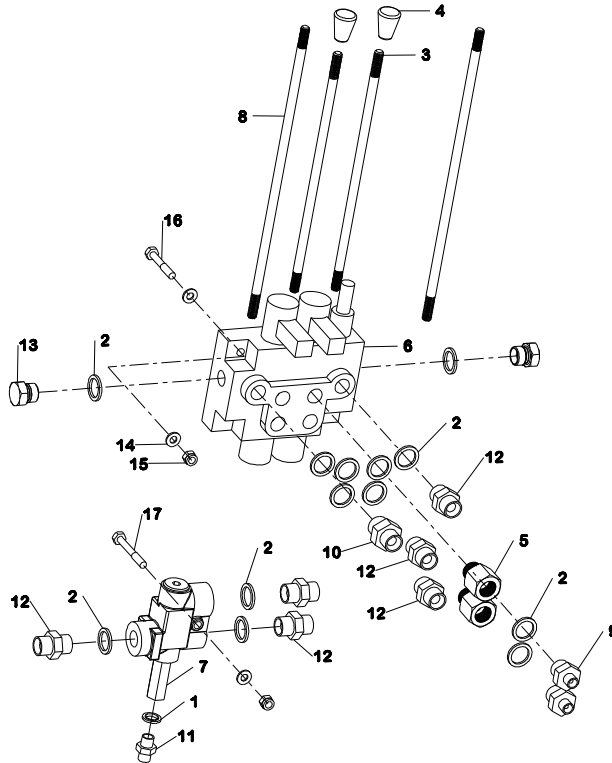
SX5/6/7/8/9000



HYRAULIC CONTROL VALVES

ITEM	PART NO.	DESCRIPTION	QTY	U/M
1	197P4	PLUG	2	EA
2	330P2	BONDED SEAL	1	EA
3	330P4	BONDED SEAL	7	EA
4	ABP3005891	HANDLE SX5/6/7000 SXR5/6/7000	1	EA
5	ABP3005892	CAP END	1	EA
6	SX705071	TIP VALVE SINGLE SPOOL	1	EA
7	SX705087	PRIORITY VALVE	1	EA
8	SX705095	HANDLE SX8/9000 SXR8000	1	EA
9	W119S08	ADAPTER M-M 3/4" BSP	2	EA
10	W119S12	ADAPTER M-M 3/4" BSP	1	EA
11	W122S02	ADAPTER M-M 3/4" BSP	1	EA
12	W122S04	ADAPTER M-M 3/4" BSP	4	EA
13	W267S05	WASHER BZP	7	EA
14	W59S12	NUT NYLOC BZP	4	EA
15	W8S03F	BOLT	3	EA
16	W8S03H	BOLT	1	EA
N/A	ABP3005962	END CAP ASSY SPRING	1	EA

SXR5/6/7/8/9000



HYDRAULIC CONTROL VALVES

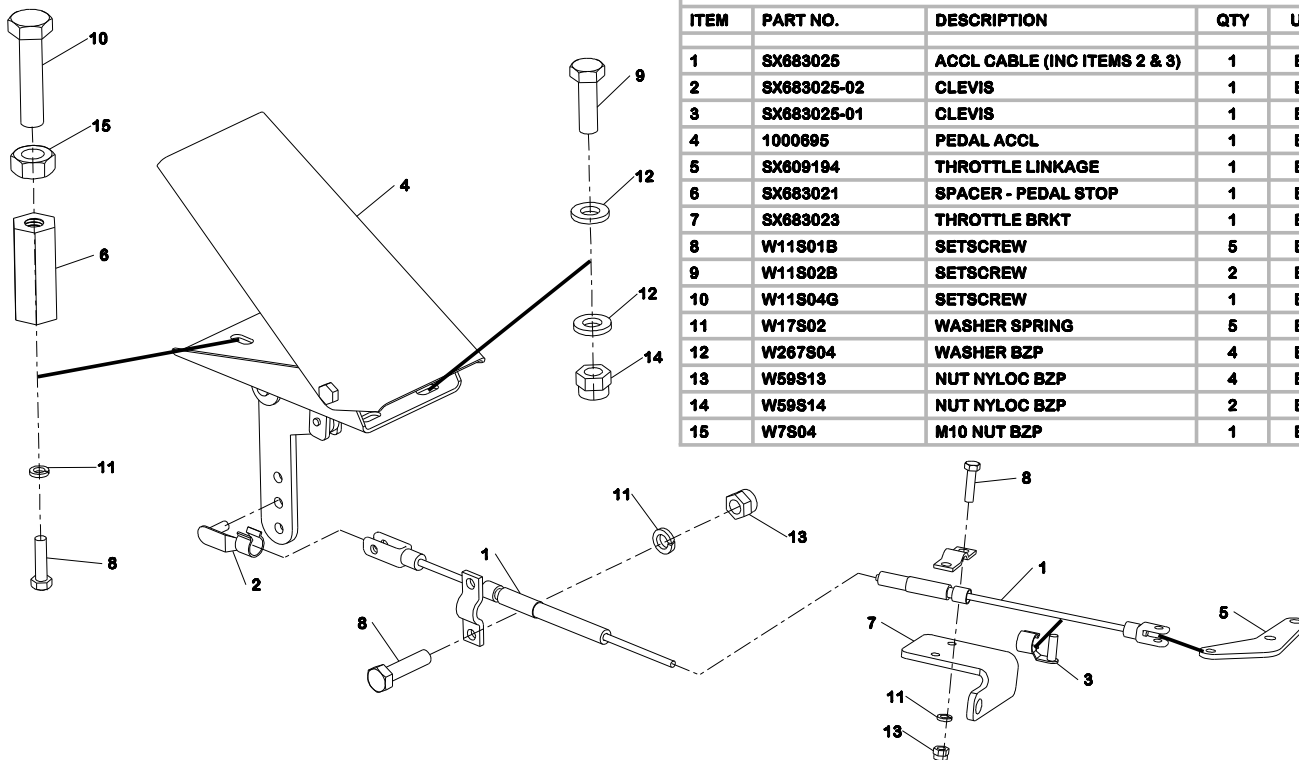
ITEM	PART NO.	DESCRIPTION	QTY	U/M
1	330P2	BONDED SEAL	1	EA
2	330P4	BONDED SEAL	13	EA
3	ABP3005891	HANDLE SX5/6/7000 SXR5/6/7000	2	EA
4	ABP3005892	CAP END	2	EA
5	SX705023	RESTRICTOR ADAPTER	2	EA
6	SX705072	TIP VALVE TWIN SPOOL	1	EA
7	SX705087	PRIORITY VALVE	1	EA
8	SX705095	HANDLE SX8/9000 SXR8000	2	EA
9	W119S04	ADAPTER M-M 3/4" BSP	2	EA
10	W119S12	ADAPTER M-M 3/4" BSP	1	EA
11	W122S02	ADAPTER M-M 3/4" BSP	1	EA
12	W122S04	ADAPTER M-M 3/4" BSP	6	EA
13	W127S04	PLUG BLANKING	2	EA
14	W267S05	WASHER BZP	7	EA
15	W59S12	NUT NYLOC BZP	4	EA
16	W8S03F	BOLT	3	EA
17	W8S03H	BOLT	1	EA
N/A	ABP3005962	END CAP ASSY SPRING	1	EA

SX5/6/7/8/9000, SXR5/6/7/8000

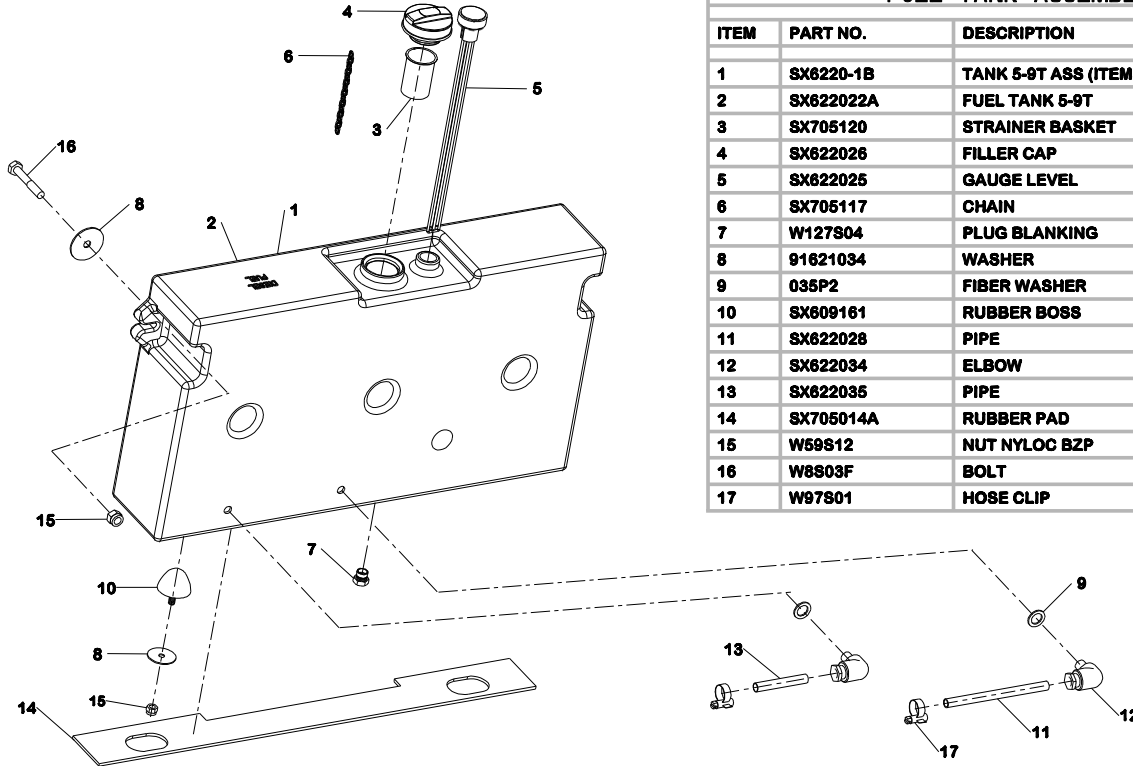


THROTTLE ASSEMBLY

ITEM	PART NO.	DESCRIPTION	QTY	U/M
1	SX683025	ACCL CABLE (INC ITEMS 2 & 3)	1	EA
2	SX683025-02	CLEVIS	1	EA
3	SX683025-01	CLEVIS	1	EA
4	1000695	PEDAL ACCL	1	EA
5	SX809194	THROTTLE LINKAGE	1	EA
6	SX683021	SPACER - PEDAL STOP	1	EA
7	SX683023	THROTTLE BRKT	1	EA
8	W11301B	SETSCREW	5	EA
9	W11302B	SETSCREW	2	EA
10	W11304G	SETSCREW	1	EA
11	W17302	WASHER SPRING	5	EA
12	W267S04	WASHER BZP	4	EA
13	W59S13	NUT NYLOC BZP	4	EA
14	W59S14	NUT NYLOC BZP	2	EA
15	W7S04	M10 NUT BZP	1	EA



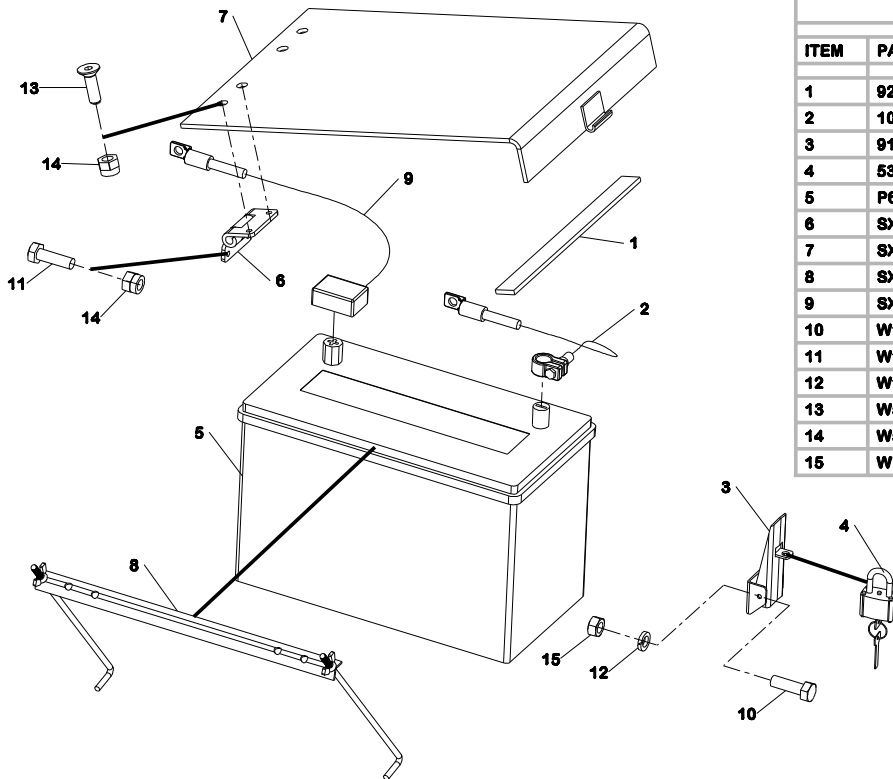
SX5/6/7/8/9000, SX5/6/7/8000



FUEL TANK ASSEMBLY

ITEM	PART NO.	DESCRIPTION	QTY	U/M
1	SX6220-1B	TANK 5-9T ASS (ITEMS 2-7)	1	EA
2	SX622022A	FUEL TANK 5-9T	1	EA
3	SX705120	STRAINER BASKET	1	EA
4	SX622026	FILLER CAP	1	EA
5	SX622025	GAUGE LEVEL	1	EA
6	SX705117	CHAIN	1	EA
7	W127904	PLUG BLANKING	1	EA
8	91621034	WASHER	4	EA
9	035P2	FIBER WASHER	2	EA
10	SX609161	RUBBER BOSS	2	EA
11	SX622028	PIPE	1	EA
12	SX622034	ELBOW	2	EA
13	SX622035	PIPE	1	EA
14	SX705014A	RUBBER PAD	1	EA
15	W59812	NUT NYLOC BZP	4	EA
16	W8803F	BOLT	2	EA
17	W97801	HOSE CLIP	2	EA

SX5/6/7/8/9000, SXR5/6/7/8000



BATTERY AND FIXINGS

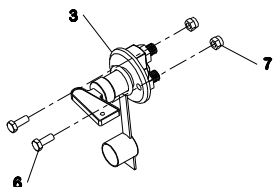
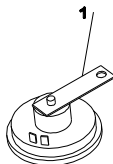
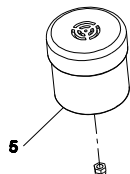
ITEM	PART NO.	DESCRIPTION	QTY	U/M
1	92862	RUBBER STRIP	1	EA
2	1006885	CBL BATTERY EARTH LEAD	1	EA
3	91710554	STRIKE	1	EA
4	530P	PADLOCK	1	EA
5	P67721-36	BATTERY	1	EA
6	SX607075	HINGE	2	EA
7	SX607076	LID	1	EA
8	SX715005	BATTERY CLAMP	1	EA
9	SX715081	CBL BATTERY EARTH LEAD	1	EA
10	W11S01A	SETSCREW	2	EA
11	W11S02B	SETSCREW	4	EA
12	W17S02	WASHER SPRING	2	EA
13	W52802D	SCREW-HEX-SOC-CSK-HD	4	EA
14	W59S14	NUT NYLOC BZP	8	EA
15	W7801	M10 NUT BZP	2	EA

SX5/6/7/8/9000, SXR5/6/7/8000

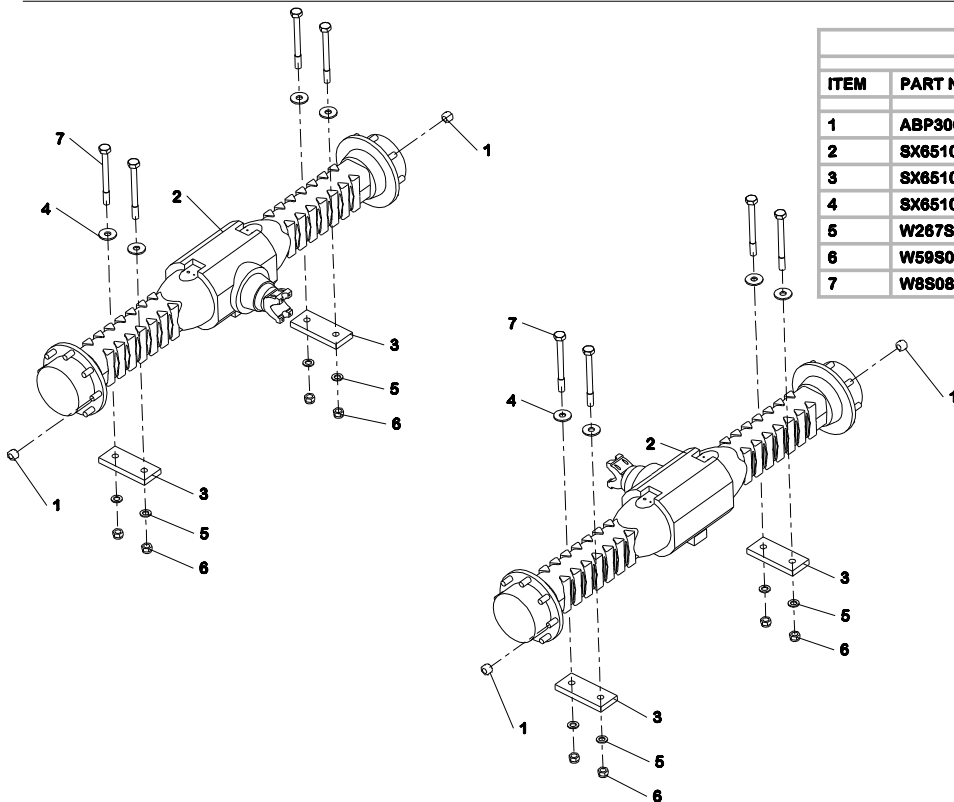


ELECTRICAL GENERAL

ITEM	PART NO.	DESCRIPTION	QTY	U/M
1	92513A	HORN	1	EA
2	P282175-12	HOURS METER	1	EA
3	P284115-26	BATTERY ISOLATOR	1	EA
4	P284125-76	PRESSURE SWITCH	1	EA
5	SX715012	REVERSE BLEEPER	1	EA
6	W11802A	SETSCREW	2	EA
7	W59814	NUT NYLOC BZP	3	EA
N/A	SX715109	LOOM CHASSIS	1	EA

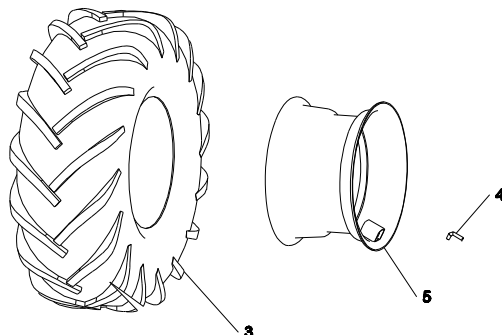


SX5/6/7/8/9000, SXR5/6/7/8000



AXLES				
ITEM	PART NO.	DESCRIPTION	QTY	U/M
1	ABP3006030	NUT	32	EA
2	SX651015	AXLE 5-9T	2	EA
3	SX651016	LOCKING PLATE	4	EA
4	SX651024A	WASHER	8	EA
5	W267S12	WASHER BZP	8	EA
6	W59S07	NUT NYLOC BZP	8	EA
7	W8S08AA	BOLT	8	EA

SX5/6/7/8/9000, SXR5/6/7/8000



FOR NON STANDARD WHEELS AND TYRES
PLEASE CONTACT YOUR DEALER QUOTING
YOUR MACHINE SERIAL NUMBER

ITEM	PART NO.	DESCRIPTION	QTY	U/M
		SXR5000		
1	SX6750/57	TYRE ASSY.RH	2	EA.
2	SX6750/58	TYRE ASSY.LH	2	EA
3	SX675029	TYRE 12.0/75-18 12PR TRACTIVE	4	EA
4	SX675041	VALVE FAD-NO.Z6001	4	EA
5	SX675056	RIM 9.00 X 18 (4-5T)	4	EA

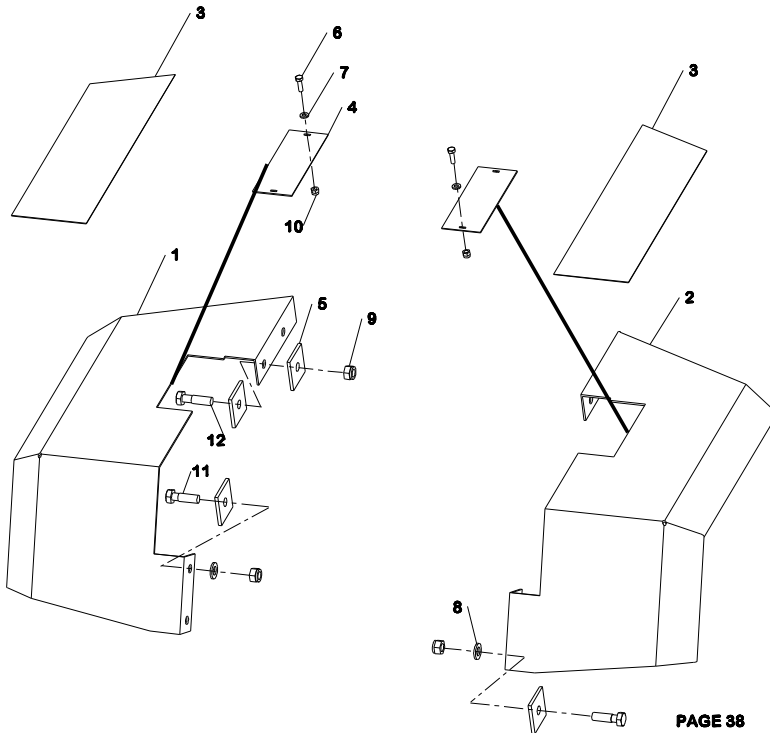
WHEELS AND TYRES

ITEM	PART NO.	DESCRIPTION	QTY	U/M
		SX6000		
1	SXZ6750/59	TYRE ASSY.RH	2	EA
2	SX6750/60	TYRE ASS. LH	2	EA
3	SX675041	VALVE -FAD NO. Z6001	4	EA
4	SX675048	TYRE 12.5/80 12PR	4	EA
5	SX675056	RIM 9.00 X 18 (4-5T)	4	EA
		SX8000, SXR6000		
1	SX6750-63	TYRE ASSY. RH	2	EA
2	SX6750-64	TYRE ASSY. LH	2	EA
3	SX675034	TYRE 405/70X20 14PR TRACTIVE	4	EA
4	SX675040	VALVE-FAD NO.Z6000	4	EA
5	SX675057	RIM-W13 (6T)	4	EA
		SX7000, SXR7000		
1	SX6750/61	TYRE ASSY. RH	2	EA
2	SX6750/62	TYRE ASSY. LH	2	EA
3	SX675034	TYRE 405/70X20 14PR TRACTIVE	4	EA
4	SX675040	VALVE-FAD NO.Z6000	4	EA
5	SX675058	RIM W13 (7T)	4	EA
		SX8/9000, SXR8000		
1	SX6750/65	TYRE ASSY. RH	2	EA
2	SX6750/66	TYRE ASSY. LH	2	EA
3	SX675041	VALVE-FAD NO.Z6001	4	EA
4	SX675046	TYRE 18.0/80-19.5 TUBELESS	4	EA
5	SX675059	RIM 13.0 X 19.5 (8-9T)	4	EA

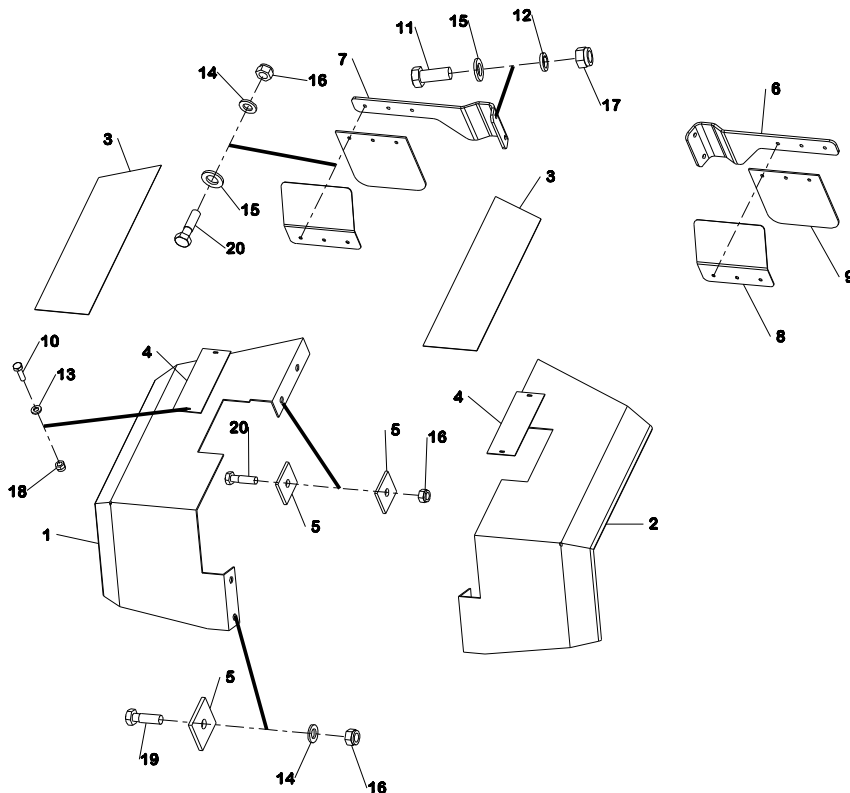
SX5/6/7/8/9000



MUD GUARDS				
ITEM	PART NO.	DESCRIPTION	QTY	U/M
1	SX609118	WING LH	1	EA
2	SX609119	WING RH	1	EA
3	181-201-01_02	SAFTEY WALK 900MM	2	EA
4	SX609120	BLANK PLATE	2	EA
5	SX609143	WASHER	12	EA
6	W11S02B	SETSCREW	4	EA
7	W267S04	WASHER BZP	4	EA
8	W267S07	WASHER BZP	4	EA
9	W59S04	NUT NYLOC BZP	8	EA
10	W59S14	NUT NYLOC BZP	4	EA
11	W8S05D	BOLT	4	EA
12	W8S05E	BOLT	4	EA



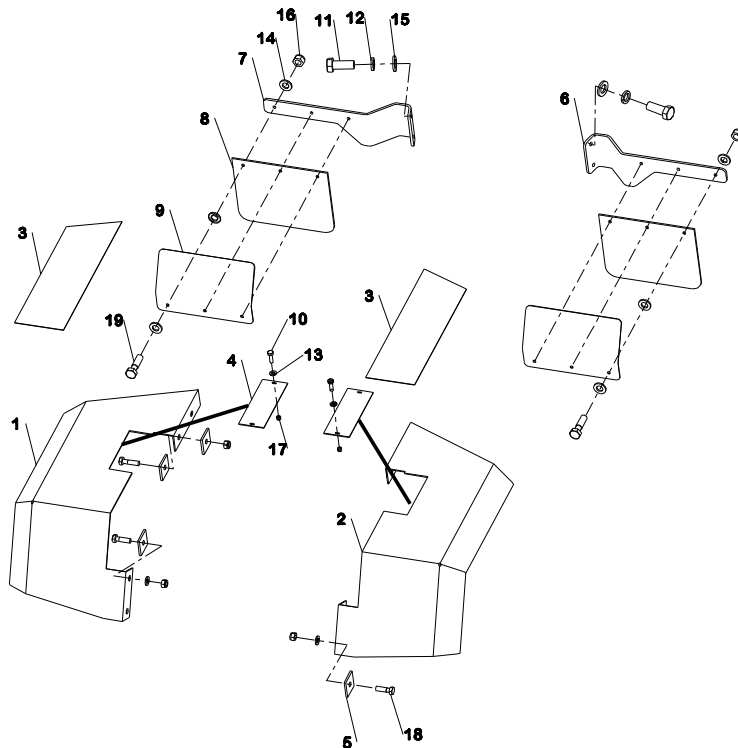
SXR5000



MUD GUARDS ROTA

ITEM	PART NO.	DESCRIPTION	QTY	U/M
1	SX609118	WING LH	1	EA
2	SX609119	WING RH	1	EA
3	181-201-01_02	SAFETY WALK 900MM	2	EA
4	SX609120	BLANK PLATE	2	EA
5	SX609143	WASHER	12	EA
6	SX609279	MUDGUARD RH	1	EA
7	SX609280	MUDGUARD LH	1	EA
8	SX609281	MUDSHIELD	2	EA
9	SX609282	MUDFLAP	2	EA
10	W11S02B	SETSCREW	4	EA
11	W11S06F	SETSCREW	4	EA
12	W17S08	WASHER SPRING	4	EA
13	W267S04	WASHER BZP	4	EA
14	W267S07	WASHER BZP	10	EA
15	W267S09	WASHER BZP	10	EA
16	W59S04	NUT NYLOC BZP	14	EA
17	W59S11	NUT NYLOC BZP	4	EA
18	W59S14	NUT NYLOC BZP	4	EA
19	W6S05D	BOLT	4	EA
20	W8S05E	BOLT	10	EA

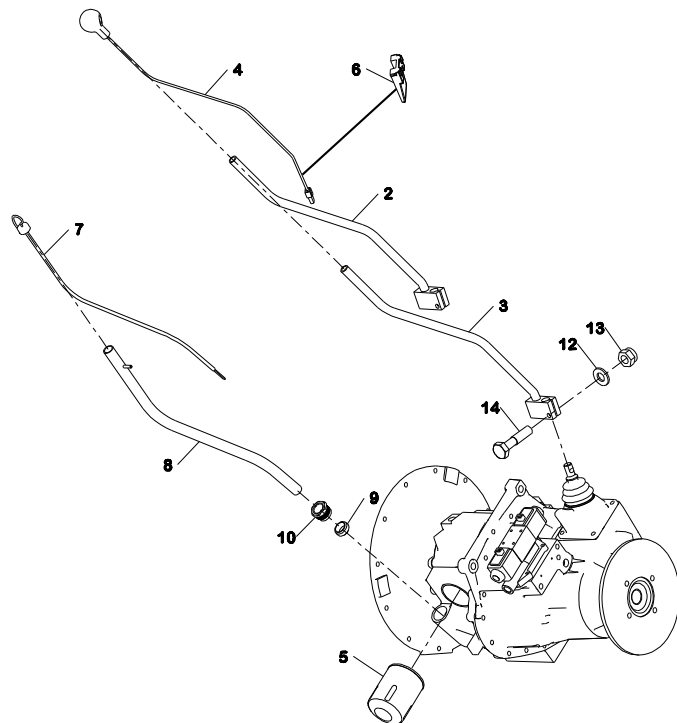
SXR6/7/8000



MUD GUARDS ROTA

ITEM	PART NO.	DESCRIPTION	QTY	U/M
1	SX609118	WING LH	1	EA
2	SX609119	WING RH	1	EA
3	181-201-01_02	SAFTEY WALK 900MM	2	EA
4	SX609120	BLANK PLATE	2	EA
5	SX609143	WASHER	12	EA
6	SX609267	MUDGUARD RH	1	EA
7	SX609268	MUDGUARD LH	1	EA
8	SX609269	MUDFLAP	2	EA
9	SX609270	MUD SHIELD	2	EA
10	W11S02B	SETSCREW	4	EA
11	W11S06F	SETSCREW	4	EA
12	W17S08	WASHER SPRING	4	EA
13	W267S04	WASHER BZP	4	EA
14	W267S07	WASHER BZP	22	EA
15	W267S09	WASHER BZP	4	EA
16	W59S04	NUT NYLOC BZP	14	EA
17	W59S14	NUT NYLOC BZP	4	EA
18	W8S05D	BOLT	4	EA
19	W8S05E	BOLT	10	EA

SX5/6/7/8/9000, SXR5/6/7/8000



TRANSMISSION

ITEM	PART NO.	DESCRIPTION	QTY	U/M
2	SX681001	GEAR LEVER FAB 5-7T	1	EA
3	SX681004	GEAR LEVER FAB 8 & 9 T	1	EA
4	SX715006	DUMP SWITCH CABLE	1	EA
5	ABP3004929	OIL FILTER	1	EA
6	P261651-66	WEDGE	1	EA
7	SX626039	DIPSTICK	1	EA
8	SX626040	DIPSTICK TUBE	1	EA
9	SX626042-01	DIPSTICK SEAL	1	EA
10	SX626042-02	DIPSTICK LOCKNUT	1	EA
11	SX626069	TRANSMISSION	1	EA
12	W267S06	WASHER BZP	1	EA
13	W59S03	NUT NYLOC BZP	1	EA
14	W8S04E	BOLT	1	EA

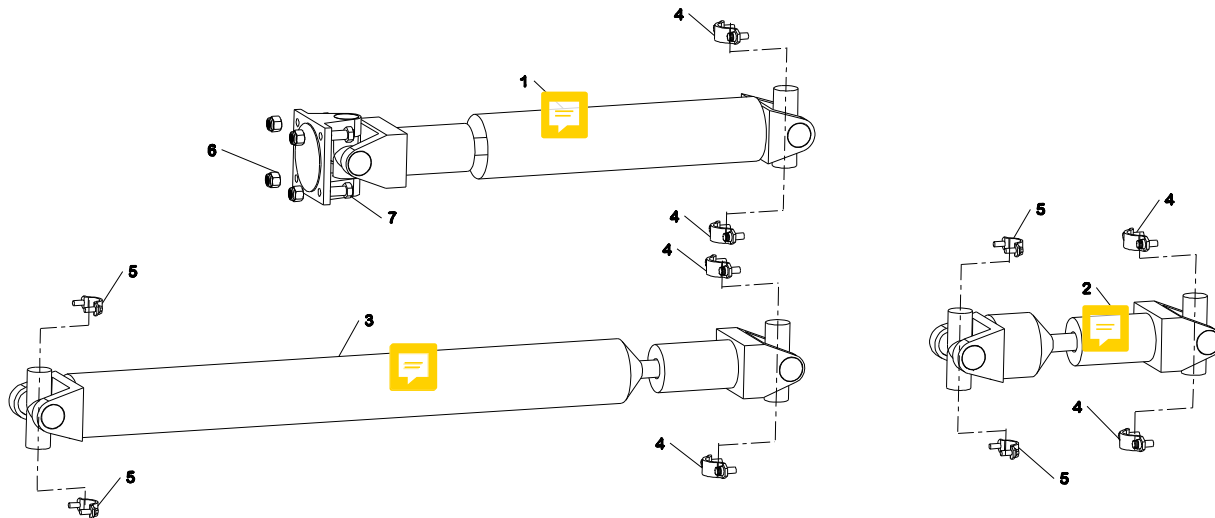
PLEASE CONTACT
BARFORD SITE DUMPERS
QUOTING YOUR TRANSMISSION
SERIAL NUMBER.

SX5/6/7/8/9000, SXR5/6/7/8000

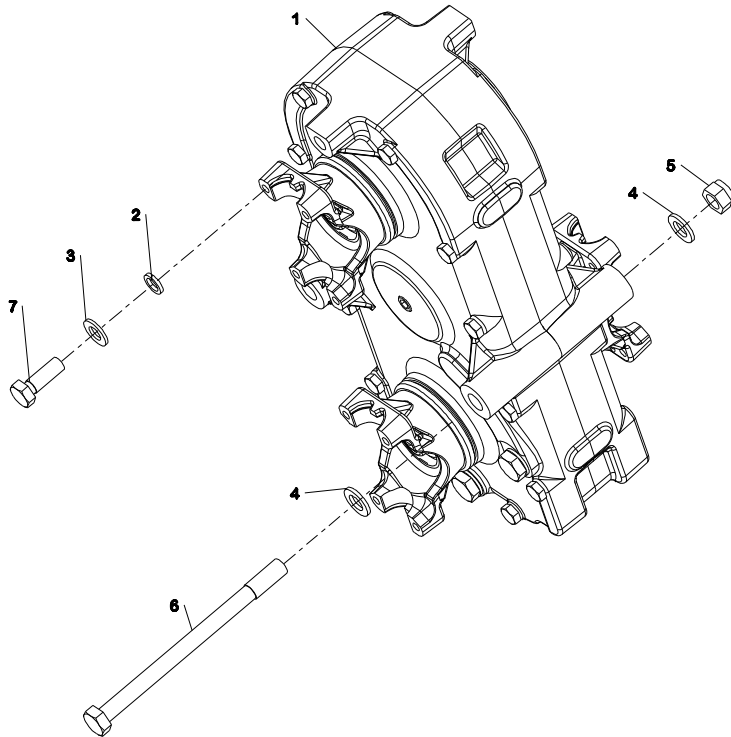


PROP SHAFTS

ITEM	PART NO.	DESCRIPTION	QTY	U/M
1	SX645034	PROPSHAFT	1	EA
2	SX645035	PROPSHAFT	1	EA
3	SX645036	PROPSHAFT	1	EA
4	SX645017	STRAP KIT 1480	6	EA
5	SX645027	STRAP KIT 1410	4	EA
6	W107S16	NYLOC NUT BZP1/2 UNF	4	EA
7	W6S05C	BOLT BZP 1/2 UNF 1-1/2	4	EA



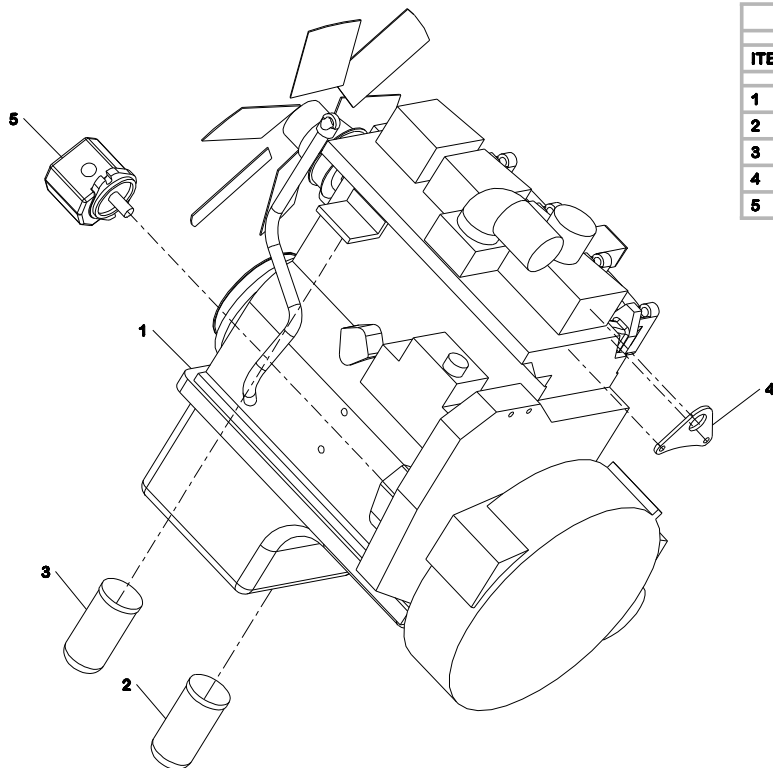
SX5/6/7/8/9000, SXR5/6/7/8000



DROP BOX

ITEM	PART NO.	DESCRIPTION	QTY	U/M
1	SX626077	DROPBOX	1	EA
2	W17S07	WASHER SPRING	1	EA
3	W267S08	WASHER BZP	1	EA
4	W267S09	WASHER BZP	4	EA
5	W59S11	NUT NYLOC BZP	2	EA
6	W8S06Y	BOLT	2	EA
7	W8S09D	BOLT	1	EA

SX5/6000, SXR5/6000

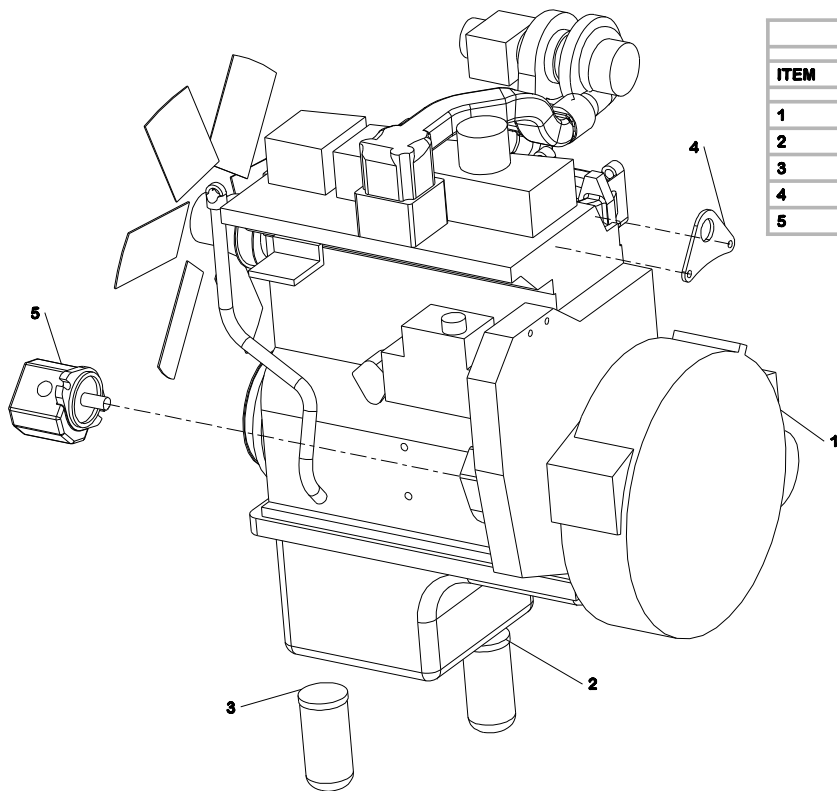


ENGINE AND ACCESSORIES

ITEM	PART NO.	DESCRIPTION	QTY	U/M
1	SX616069	ENGINE IVECO TIER II	1	EA
2	ABP3006422	OIL FILTER	1	EA
3	ABP3006423	FUEL FILTER	1	EA
4	SX616076	LIFTING BRKT	1	EA
5	SX705197	PUMP 25CC	1	EA

**PLEASE SEE ENGINE MANUAL
AND CONTACT YOUR LOCAL
DEALER WITH YOUR ENGINE
SERIAL NUMBER**

SX7/8/9000, SXR7/8000



ENGINE AND ACCESSORIES

ITEM	PART NO.	DESCRIPTION	QTY	U/M
1	SX616070	ENGINE TURBO IVECO TIER 2	1	EA
2	ABP3006422	OIL FILTER	1	EA
3	ABP3006423	FUEL FILTER	1	EA
4	SX616076	LIFTING BRKT	1	EA
5	SX705197	PUMP 25CC	1	EA

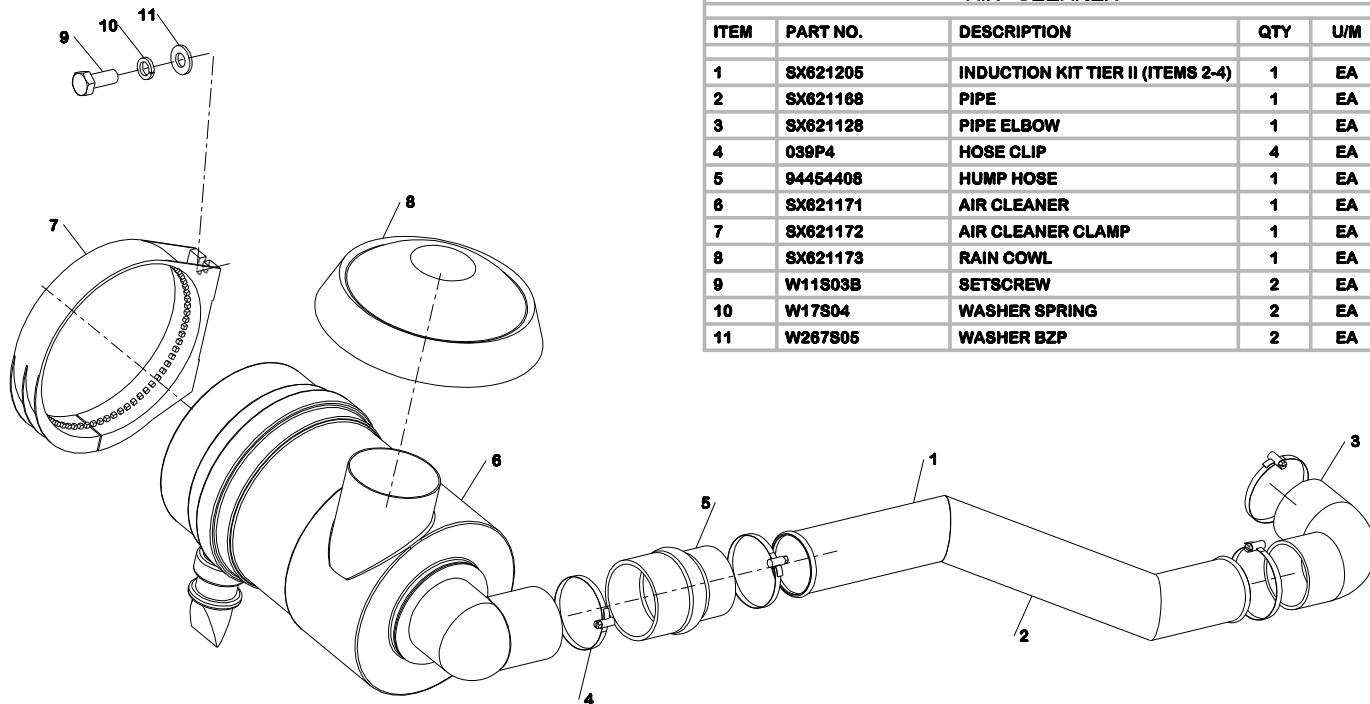
**PLEASE SEE ENGINE MANUAL
AND CONTACT YOUR LOCAL
DEALER WITH YOUR ENGINE
SERIAL NUMBER**

SX5/6000, SXR5/6000



AIR CLEANER

ITEM	PART NO.	DESCRIPTION	QTY	U/M
1	SX821205	INDUCTION KIT TIER II (ITEMS 2-4)	1	EA
2	SX821168	PIPE	1	EA
3	SX821128	PIPE ELBOW	1	EA
4	039P4	HOSE CLIP	4	EA
5	94454408	HUMP HOSE	1	EA
6	SX821171	AIR CLEANER	1	EA
7	SX821172	AIR CLEANER CLAMP	1	EA
8	SX821173	RAIN COWL	1	EA
9	W11903B	SETSCREW	2	EA
10	W17904	WASHER SPRING	2	EA
11	W267805	WASHER BZP	2	EA

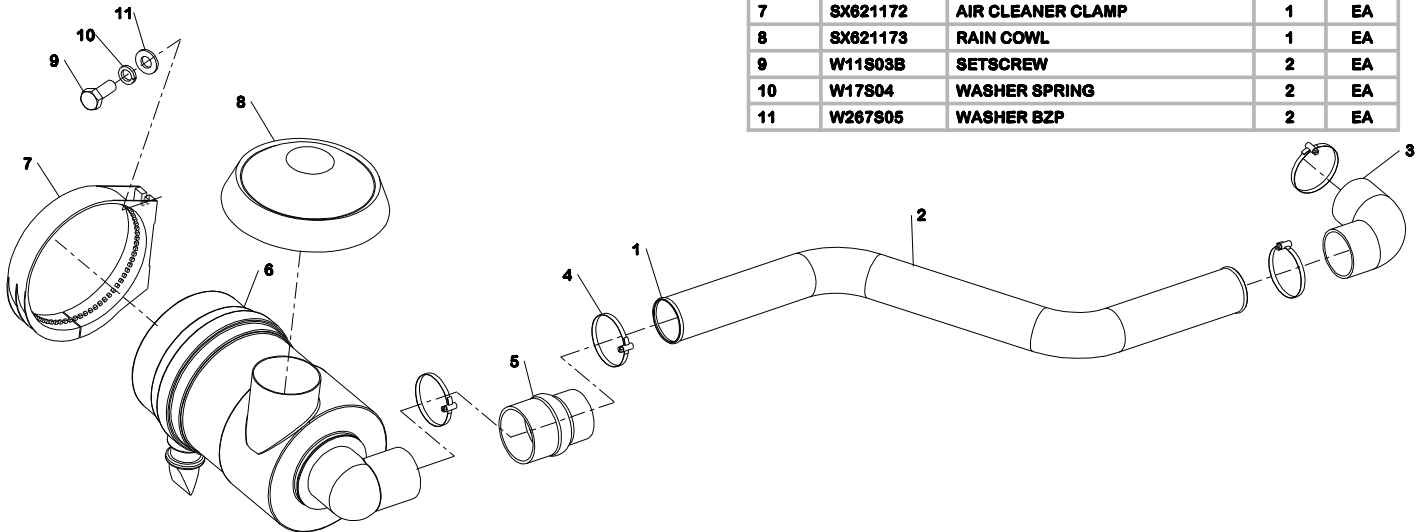


SX7/8/9000, SXR7/8000

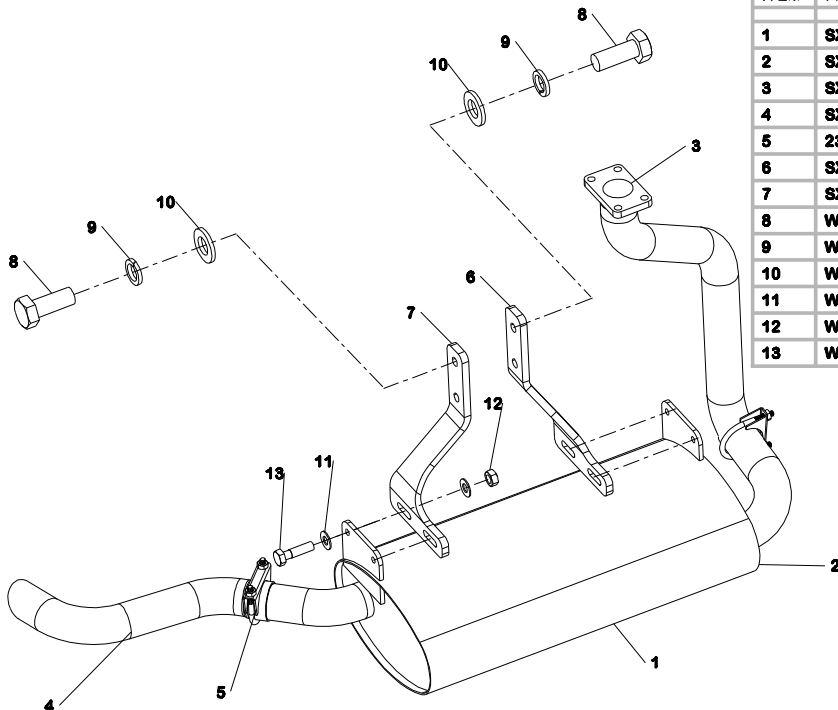


AIR CLEANER TURBO

ITEM	PART NO.	DESCRIPTION	QTY	U/M
1	SX621206	INDUCTION KIT TURBO (ITEMS 2-4)	1	EA
2	SX621157	AIR PIPE TIER 2 TURBO	1	EA
3	SX621128	PIPE ELBOW	1	EA
4	039P4	HOSE CLIP	4	EA
5	94454408	HUMP HOSE	1	EA
6	SX621171	AIR CLEANER	1	EA
7	SX621172	AIR CLEANER CLAMP	1	EA
8	SX621173	RAIN COWL	1	EA
9	W11903B	SETSCREW	2	EA
10	W17804	WASHER SPRING	2	EA
11	W267805	WASHER BZP	2	EA



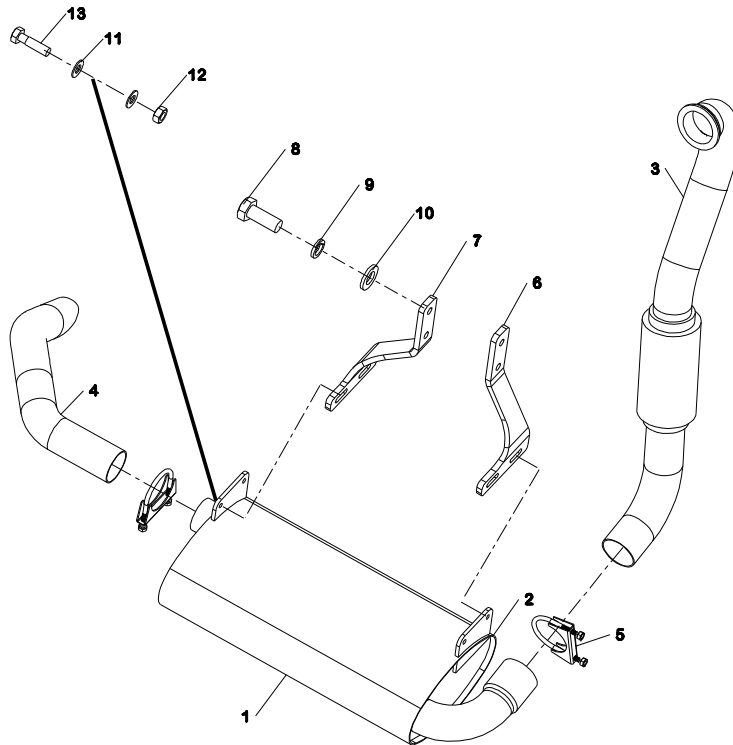
SX5/6000, SXR5/6000



EXHAUST

ITEM	PART NO.	DESCRIPTION	QTY	U/M
1	SX621207	SILENCER KIT NON TURBO (ITEMS 2-5)	1	EA
2	SX621150	SILENCER	1	EA
3	SX621151	EXHAUST PIPE TIER II	1	EA
4	SX621152	TAIL PIPE TIER II	1	EA
5	235P17	C CLAMP	2	EA
6	SX621153	SILENCER SUPPORT LH	1	EA
7	SX621154	SILENCER SUPPORT RH	1	EA
8	W11905D	SETSCREW	4	EA
9	W17S06	WASHER SPRING	4	EA
10	W267807	WASHER BZP	4	EA
11	W267817	WASHER BZP	8	EA
12	W7803	M10 NUT BZP	4	EA
13	W8S03B	BOLT	4	EA

SX7/8/9000, SXR7/8000



EXHAUST TURBO

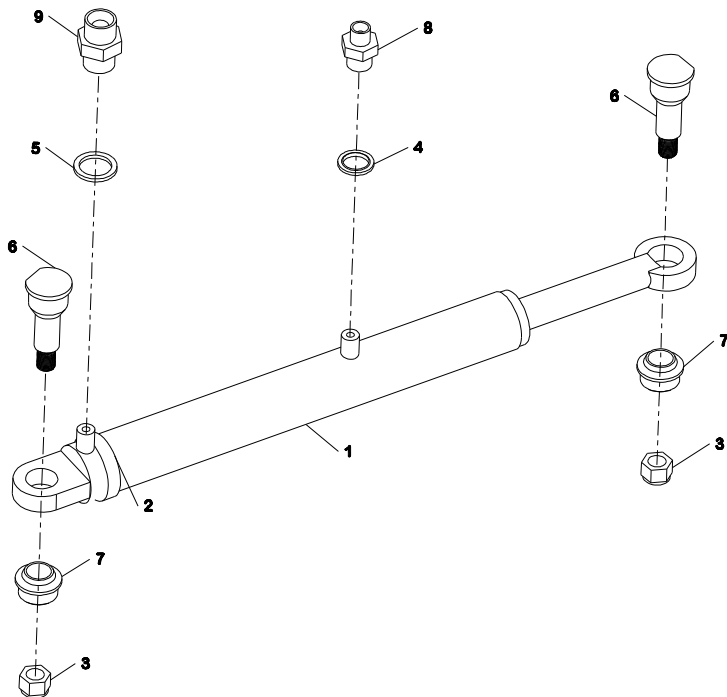
ITEM	PART NO.	DESCRIPTION	QTY	U/M
1	SX621208	SILENCER KIT TURBO (ITEMS 2-5)	1	EA
2	SX621164	SILENCER TURBO TIER 2	1	EA
3	SX621165	EXHAUST PIPE TURBO TIER 2	1	EA
4	SX621166	TAIL PIPE TURBO TIER 2	1	EA
5	235P21	C CLAMP	2	EA
6	SX621153	SILENCER SUPPORT LH	1	EA
7	SX621154	SILENCER SUPPORT RH	1	EA
8	W11805D	SETSCREW	4	EA
9	W17806	WASHER SPRING	4	EA
10	W267807	WASHER BZP	4	EA
11	W267817	WASHER BZP	8	EA
12	W7803	M10 NUT BZP	4	EA
13	W8903B	BOLT	4	EA

SX5/6/7/8/9000, SXR5/6/7/8000



STEERING RAM

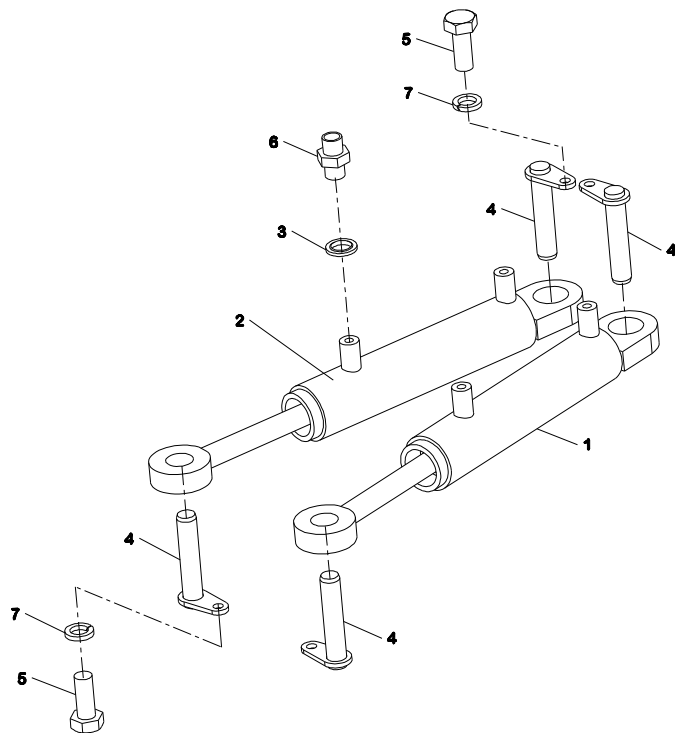
ITEM	PART NO.	DESCRIPTION	QTY	U/M
1	SX7060-7	RAM	1	EA
2	ABP3005128	RAM SEAL KIT SK916	1	EA
3	145P10	NUT NYLOC	2	EA
4	330P3	BONDED SEAL	1	EA
5	330P4	BONDED SEAL	1	EA
6	SX706017	STEER RAM PIN	2	EA
7	SX706018	STEER RAM PIN BUSH	2	EA
8	W119S03	ADAPTER M-M 3/4" BSP	1	EA
9	W122S04	ADAPTER M-M 3/4" BSP	1	EA



SXR5/6/7/8000

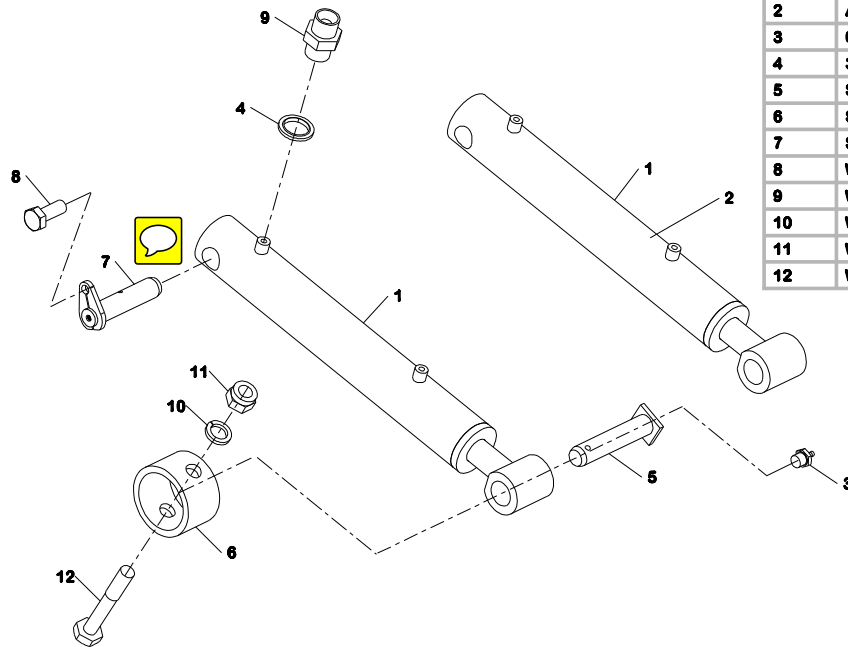


ROTOR RAM



ITEM	PART NO.	DESCRIPTION	QTY	U/M
1	SX7070-20	RAM	2	EA
2	ABP3005127	RAM SEAL KIT SK922	2	EA
3	330P2	BONDED SEAL	2	EA
4	SX707058	PIN SWIVEL RAM	4	EA
5	W11S03B	SETSCREW	4	EA
6	W122S02	ADAPTER M-M 3/4" BSP	2	EA
7	W17S04	WASHER SPRING	4	EA

SX5/6/7/8/9000



TIP RAM

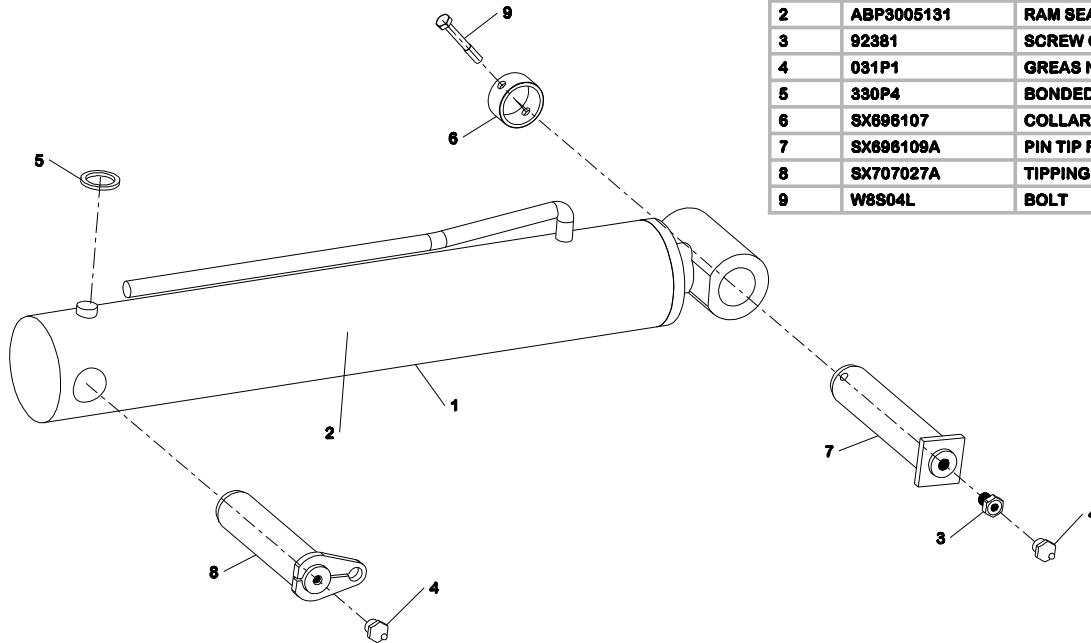
ITEM	PART NO.	DESCRIPTION	QTY	U/M
1	SX7070-21	RAM	2	EA
2	ABP3005132	RAM SEAL KIT 920	2	EA
3	031P1	GREAS NIPPLE 1/8" BSPF	2	EA
4	330P3	BONDED SEAL	4	EA
5	SX696065A	TIP PIVOT PIN	2	EA
6	SX696077	COLLAR	2	EA
7	SX707005A	TIP RAM PIN	2	EA
8	W11S05D	SETSCREW	2	EA
9	W122S03	ADAPTER M-M 3/4" BSP	4	EA
10	W17S06	WASHER SPRING	2	EA
11	W59S03	NUT NYLOC BZP	2	EA
12	W8904J	BOLT	2	EA

SXR5/6000

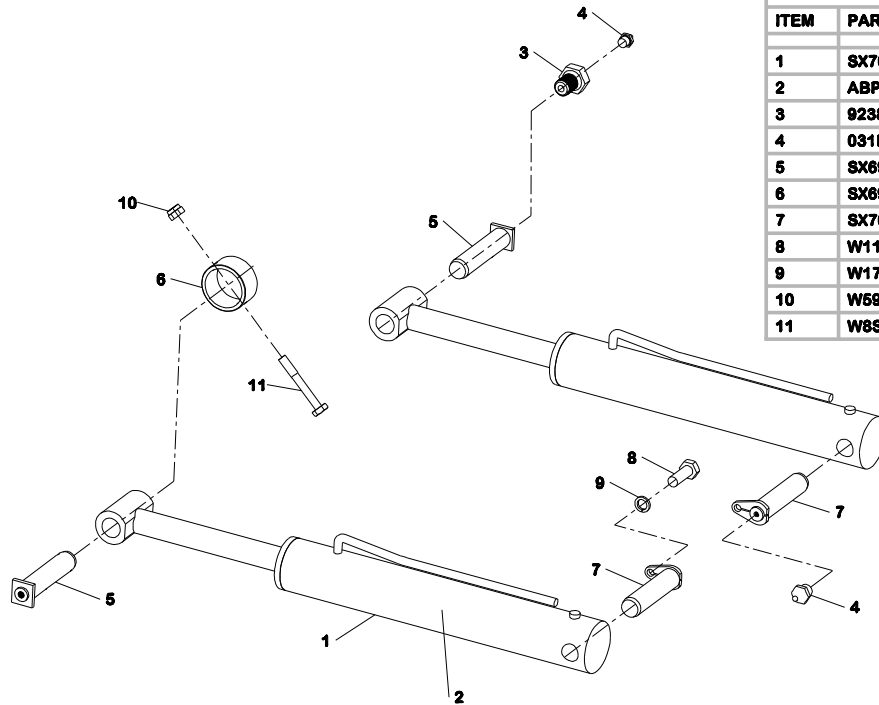


TIP RAM ROTA

ITEM	PART NO.	DESCRIPTION	QTY	U/M
1	SX7070-25	RAM	1	EA
2	ABP3005131	RAM SEAL KIT SK919	1	EA
3	92381	SCREW GREASING	1	EA
4	031P1	GREAS NIPPLE 1/8" BSPF	2	EA
5	330P4	BONDED SEAL	1	EA
6	SX696107	COLLAR	1	EA
7	SX696109A	PIN TIP RAM	1	EA
8	SX707027A	TIPPING PIN	1	EA
9	W8S04L	BOLT	1	EA



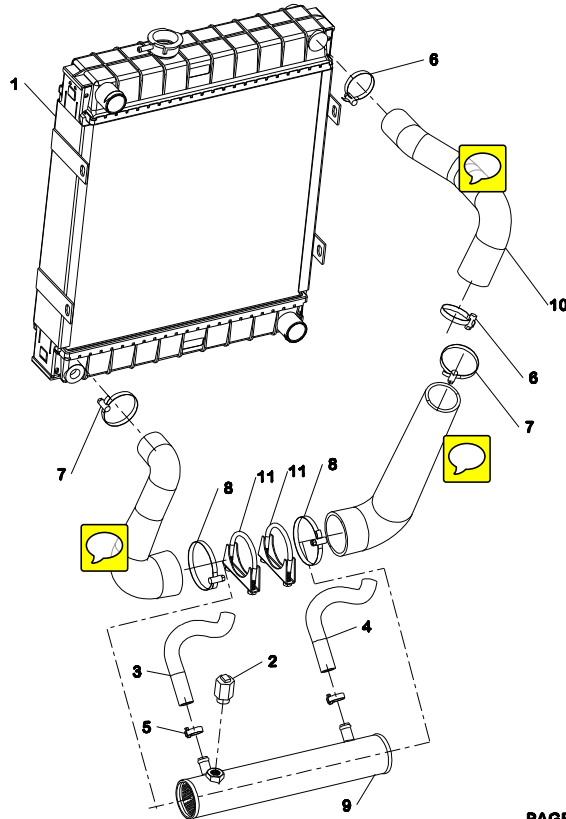
SXR7/8000



TIP RAM ROTA

ITEM	PART NO.	DESCRIPTION	QTY	U/M
1	SX7070-19	RAM	2	EA
2	ABP3005133	RAM SEAL KIT 923	2	EA
3	92381	SCREW GREASING	2	EA
4	031P1	GREAS NIPPLE 1/8" BSPF	4	EA
5	SX696105A	TIP RAM PIN	2	EA
6	SX696107	COLLAR	2	EA
7	SX707027A	TIPPING PIN	2	EA
8	W11805E	SETSCREW	2	EA
9	W17806	WASHER SPRING	2	EA
10	W59803	NUT NYLOC BZP	2	EA
11	W8804L	BOLT	2	EA

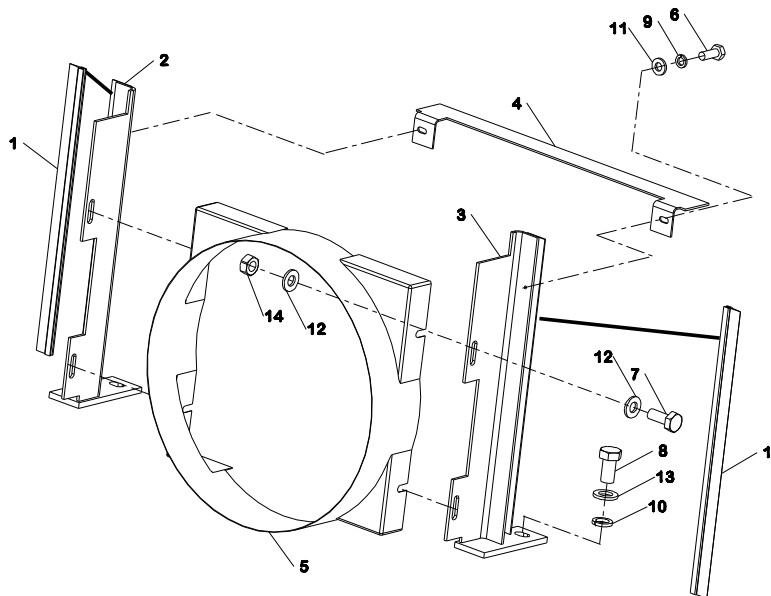
SX5/6/7/8/9000, SXR5/6/7/8000



RADIATOR AND OIL COOLER

ITEM	PART NO.	DESCRIPTION	QTY	U/M
1	SX621155	RADIATOR TIER 2	1	EA
2	264128-53	TEMP SWITCH OIL COOLER	1	EA
3	94422277	HOSE TRANS/COOLER	1	EA
4	94422278	HOSE TRANS/COOLER	1	EA
5	039P1A	HOSE CLIP	2	EA
6	039P2A	HOSE CLIP	2	EA
7	039P2X	HOSE CLIP	2	EA
8	039P3X	HOSE CLIP	2	EA
9	SX621139	OIL COOLER	1	EA
10	SX621163	COOLING HOSE KIT	1	EA
11	SX621200	SADDLE CLAMP	2	EA

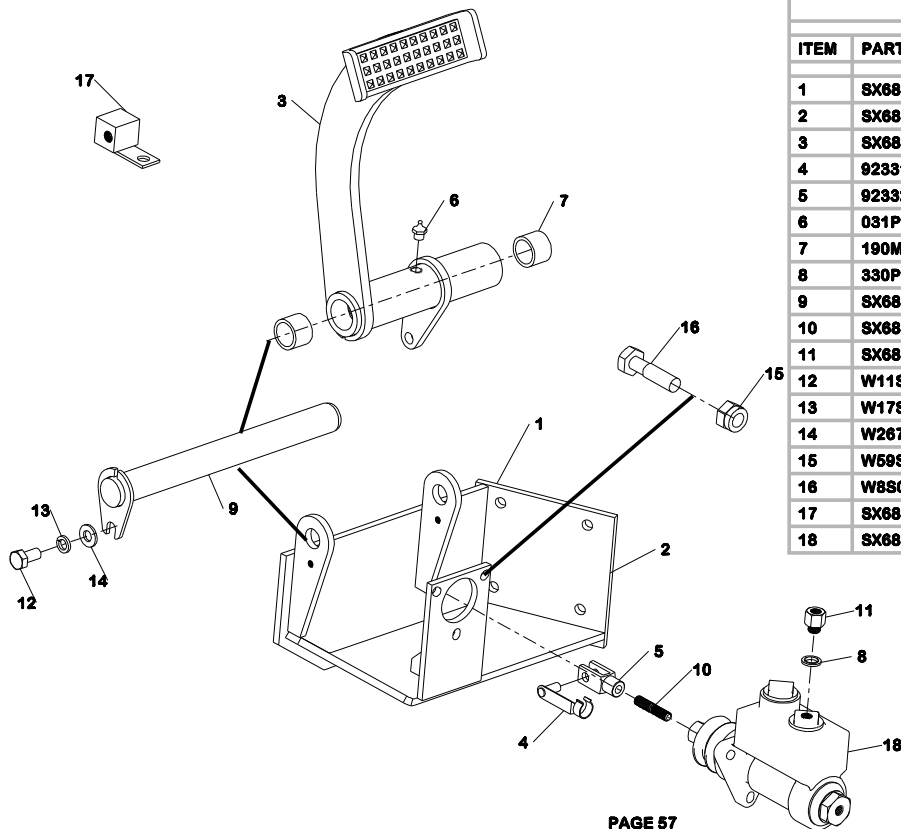
SX5/6/7/8/9000, SXR5/6/7/8000



RADIATOR FIXINGS

ITEM	PART NO.	DESCRIPTION	QTY	U/M
1	172-103-04	EDGE TRIM	2	EA
2	SX621120	RADIATOR BRACKET RH	1	EA
3	SX621121	RADIATOR BRACKET LH	1	EA
4	SX621122	RADIATOR BAFFLE	1	EA
5	SX621123	SHROUD	1	EA
6	W11802A	SETSCREW	2	EA
7	W11804C	SETSCREW	4	EA
8	W11806D	SETSCREW	2	EA
9	W17803	WASHER SPRING	2	EA
10	W17808	WASHER SPRING	2	EA
11	W267S04	WASHER BZP	2	EA
12	W267S06	WASHER BZP	8	EA
13	W267S09	WASHER BZP	2	EA
14	W7S04	M10 NUT BZP	4	EA

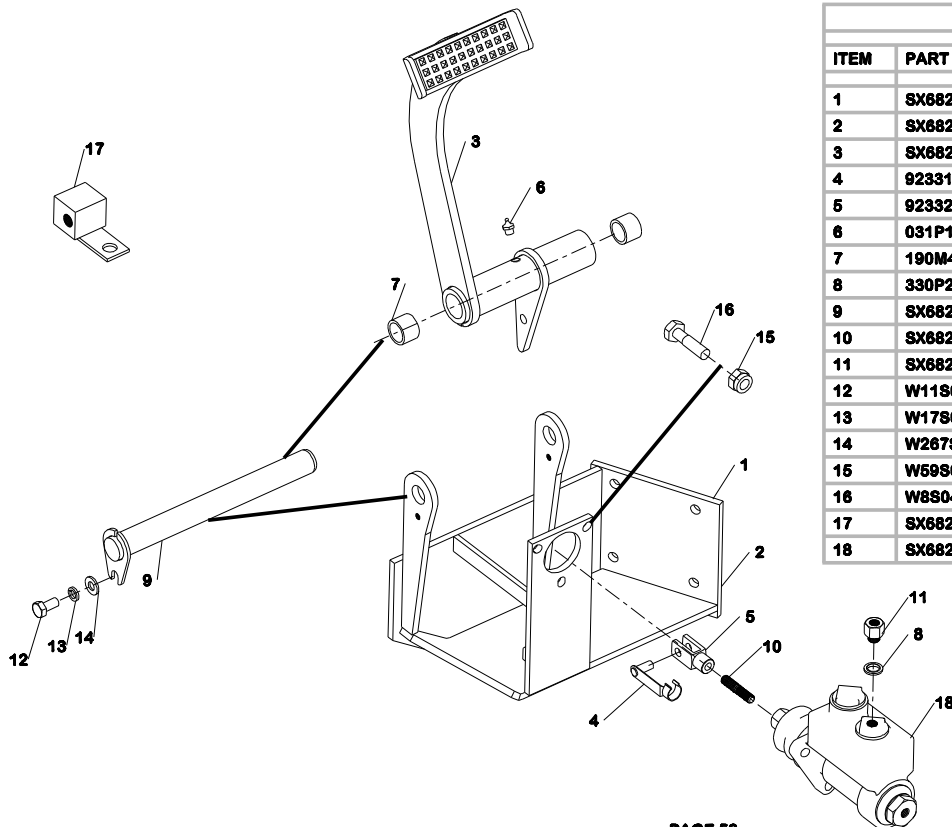
SX5/6/7/8/9000, SXR5/6/7/8000



BRAKES

ITEM	PART NO.	DESCRIPTION	QTY	U/M
1	SX6820-1	PEDAL ASSY (ITEMS 2-16)	1	EA
2	SX682108	PEDAL BRACKET	1	EA
3	SX682109	BRAKE PEDAL	1	EA
4	92331	CLEVIS	1	EA
5	92332	FORK HEAD	1	EA
6	031P1	GREAS NIPPLE 1/8" BSPF	1	EA
7	190M44-20	OIL RETAINING BUSH	2	EA
8	330P2	BONDED SEAL	1	EA
9	SX682062	PIVOT PIN	1	EA
10	SX682110A	PUSH ROD	1	EA
11	SX682115	ADAPTOR	1	EA
12	W11S03A	SETScrew	1	EA
13	W17804	WASHER SPRING	1	EA
14	W267S05	WASHER BZP	1	EA
15	W69S03	NUT NYLOC BZP	3	EA
16	W8S04D	BOLT	3	EA
17	SX682090	3-WAY BRAKE SPLITTER	1	EA
18	SX682122	M/CYLINDER	1	EA

SX8/9000, SXR8000



BRAKES

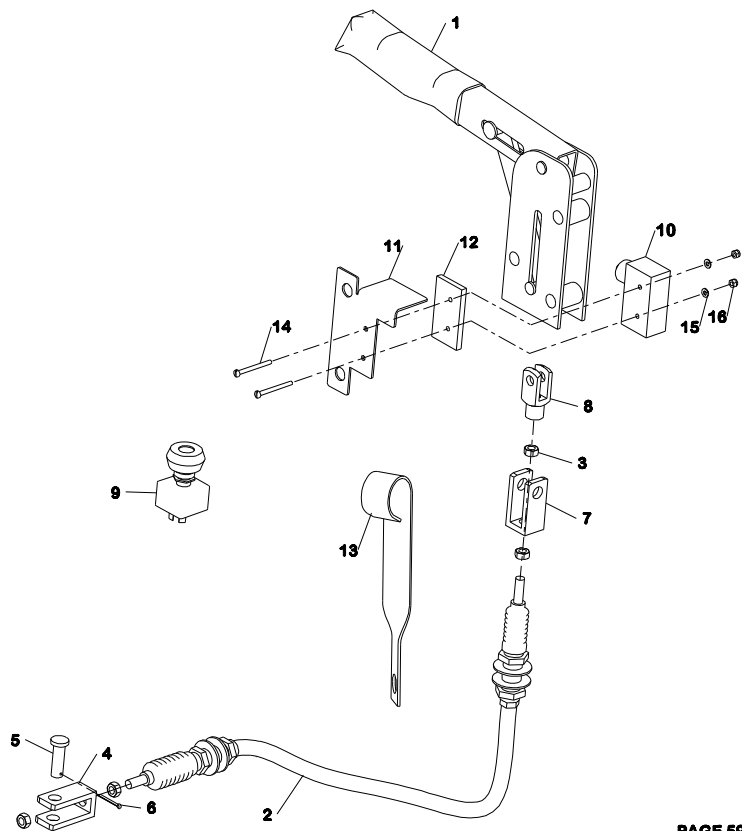
ITEM	PART NO.	DESCRIPTION	QTY	U/M
1	SX6820-2	PEDAL ASSY (ITEMS 2-16)	1	EA
2	SX682120	BRACKET BRAKE 8T	1	EA
3	SX682121	PEDAL 8T	1	EA
4	92331	CLEVIS	1	EA
5	92332	FORK HEAD	1	EA
6	031P1	GREAS NIPPLE 1/8" BSPF	1	EA
7	190M44-20	OIL RETAINING BUSH	2	EA
8	330P2	BONDED SEAL	1	EA
9	SX682062	PIVOT PIN	1	EA
10	SX682110A	PUSH ROD	1	EA
11	SX682115	ADAPTOR	1	EA
12	W11803A	SETSCREW	1	EA
13	W17804	WASHER SPRING	1	EA
14	W267S05	WASHER BZP	1	EA
15	W59S03	NUT NYLOC BZP	3	EA
16	W8S04D	BOLT	3	EA
17	SX682090	3-WAY BRAKE SPLITTER	1	EA
18	SX682122	M/CYLINDER	1	EA

SX5/6/7/8/9000, SXR5/6/7/8000

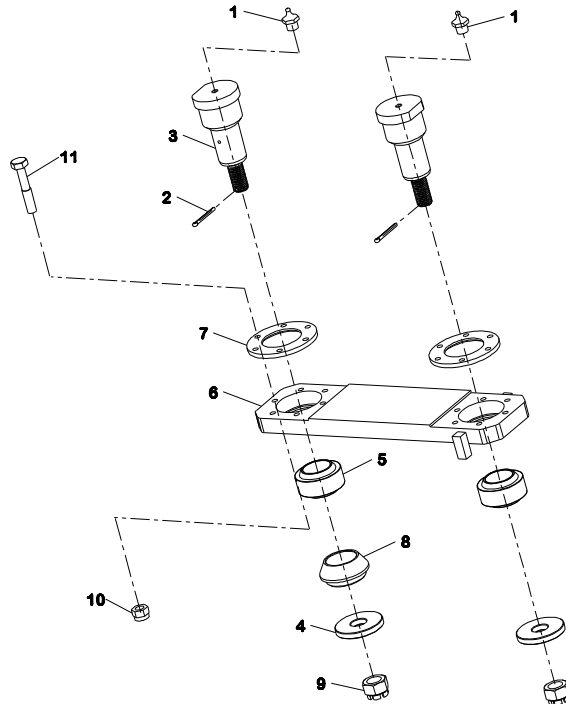


PARKING BRAKE

ITEM	PART NO.	DESCRIPTION	QTY	U/M
1	50221	LEVER HANDBRAKE	1	EA
2	92301	CABLE, HANDBRAKE (ITEMS 3-7)	1	EA
3	W7802	M10 NUT BZP	4	EA
4	ABP3004371	CLEVIS	1	EA
5	ABP2004372	PIN	1	EA
6	ABP3004373	SPLIT PIN	1	EA
7	SX682069	CLEVIS	1	EA
8	52310	FORK HEAD	1	EA
9	P264112-42	ROTARY SWITCH	1	EA
10	P264119-34	MICRO SWITCH	1	EA
11	SX609139	COVER	1	EA
12	SX609142	HANDBRAKE M/S SPACER	1	EA
13	SX682114	H-BRAKE CBL BRACKET	1	EA
14	W16S03F	PANHEAD SCREW	2	EA
15	W267S01	WASHER BZP	2	EA
16	W59S01	NUT NYLOC BZP	2	EA



SX5/6/7/8/9000, SXR5/6/7/8000



TOP LINK AND PINS

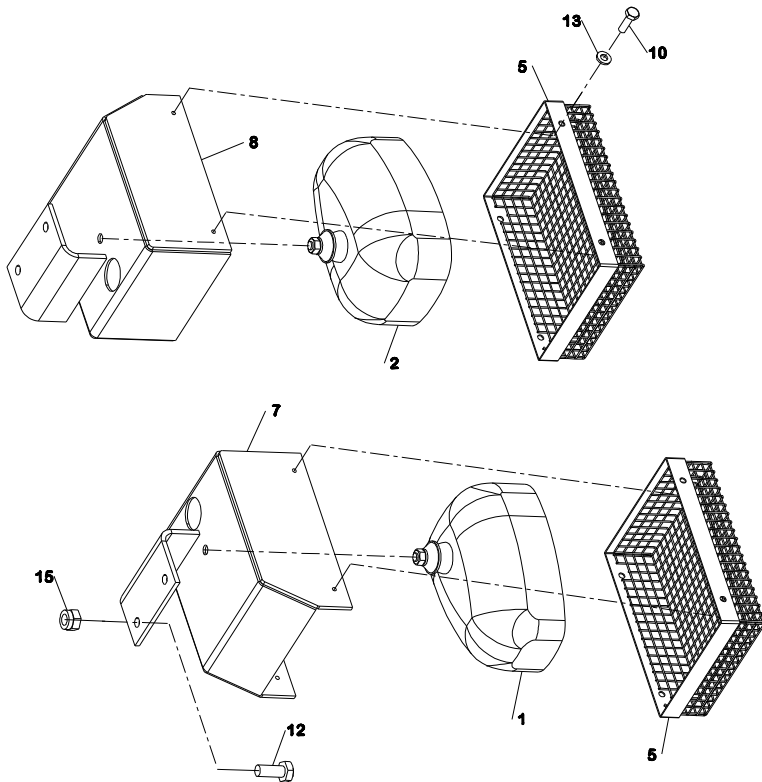
ITEM	PART NO.	DESCRIPTION	QTY	U/M
1	031P1	GREAS NIPPLE 1/8" BSPF	2	EA
2	335P6_2	SPLIT_PIN	2	EA
3	SX609001A	TOP PIN	2	EA
4	SX609004	WASHER	2	EA
5	SX609010	(A)45 I/D SPH BEARING	2	EA
6	SX609013	TOP LINK	1	EA
7	SX609014	BEARING CAP	2	EA
8	SX609241	TOP SPACER	1	EA
9	W228S11	CASTLE NUT	2	EA
10	W59S12	NUT NYLOC BZP	12	EA
11	W8S03E	BOLT	12	EA

SX5/6/7/8/9000 SXR5/6/7/8000

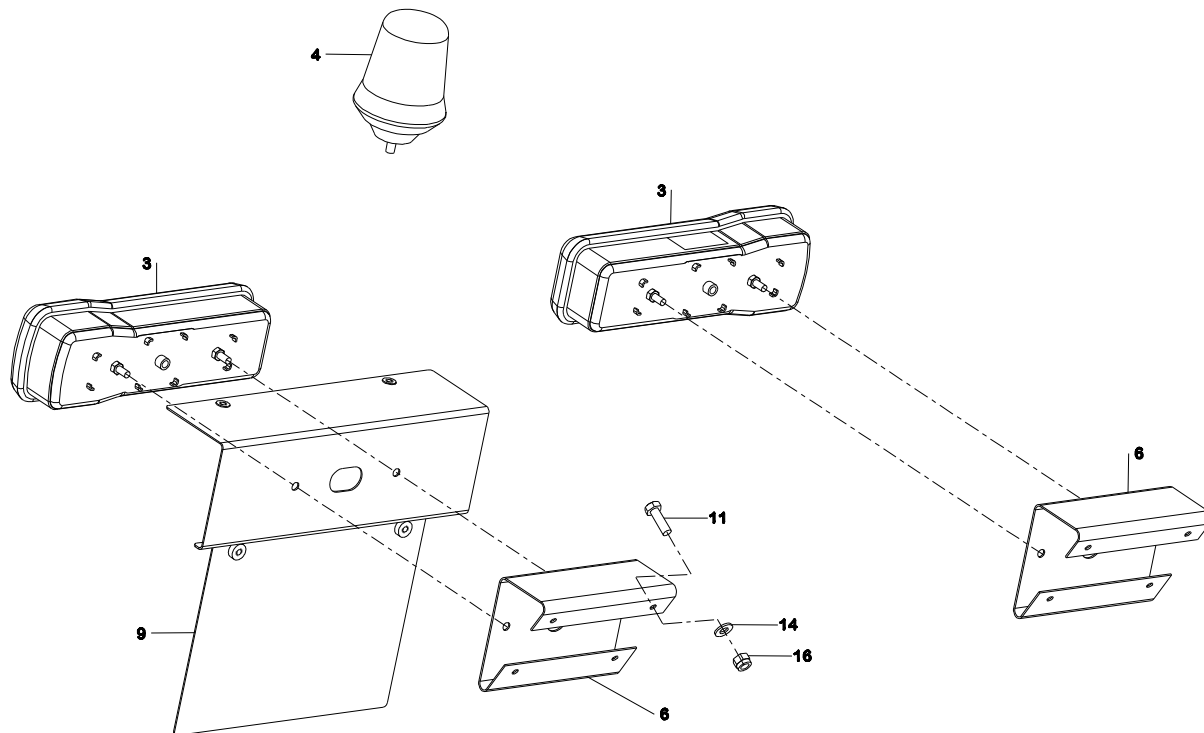


LIGHTS-OPTION

ITEM	PART NO.	DESCRIPTION	QTY	U/M
1	P266118-39	HEADLAMP LH MT LH DIP	1	EA
2	P266118-40	HEADLAMP LH MT LH DIP	1	EA
3	P266118-41	REAR LIGHT	2	EA
4	SX345EZ1	BEACON	1	EA
5	SX442014	LIGHT GUARD	2	EA
6	SX442029	SUPPORT BRACKET	2	EA
7	SX442034	LAMP BRACKET RH	1	EA
8	SX442035	LAMP BRACKET LH	1	EA
9	SX442040	BRACKET REAR LAMP	1	EA
10	W11S02B	SETSCREW	8	EA
11	W11S03C	SETSCREW	8	EA
12	W11S04C	SETSCREW	4	EA
13	W267S04	WASHER BZP	8	EA
14	W267S05	WASHER BZP	8	EA
15	W59S03	NUT NYLOC BZP	4	EA
16	W59S12	NUT NYLOC BZP	9	EA
N/A	SX715110	LOOM KIT LIGHTS SX5-10	1	EA



SX5/6/7/8/9000 SXR5/6/7/8000



Service And Warranty



Barford Site Dumpers give a warranty which subject to certain conditions, gives an assurance as to the quality of their product.

The warranty states:-

In the manufacture of Barford site dumpers we endeavour to ensure that only the best workmanship and materials are used. Consequently, provided:-

1. The machine has been used in accordance with our recommendations and,
2. That no alterations have been made to the machine without prior written approval and,
3. That the machine has been maintained, serviced and lubricated in accordance with our recommendations and,
4. That Barfords Warranty Certificate and /or New Machine Delivery Report has been completed and received by Barford within one month of delivery to the user.
5. That Barford receive a correctly completed claim form within thirty days of the failure occurring.
6. **UK**
That alleged defective parts are returned to Barford within 4 weeks of date of failure.
7. **All other territories**
That unless otherwise instructed the alleged defective parts are to be stored for inspection for a 6 month period from date of failure.

We will examine the alleged defective part and if we are reasonably satisfied that any defect is solely due to bad workmanship or materials, we will at our cost and at our option either repair any defective part or supply a replacement part in full discharge of all obligations upon us.

This warranty however, does not extend to recondition or second hand machines. For the avoidance of doubt, we will not entertain any other claims of a direct or consequential nature of whatsoever description and our responsibility is limited to the above.

The above warranty shall in no way detract from your statutory rights.

Warranty

It is important to use only genuine Barford spare parts and to adhere strictly to the conditions of operation and maintenance laid down by Barford Site Dumpers.

Your warranty may be invalidated if you do not comply with the above recommendations.